



1967 CAMARO HIDDEN HEADLIGHT DOOR HARNES

Installation Instructions for: Part # 30818

This kit is for installing the hidden headlight door harness in the 1967 Chevrolet Camaro. The following instructions are to help you remove the old wiring harness, and install the new wiring harness.

1. Disconnect and remove the battery from the vehicle.
2. Disconnect the power wire from the junction block located next to the battery tray.
See **Illustration 1 A & B**



Illustration 1 A

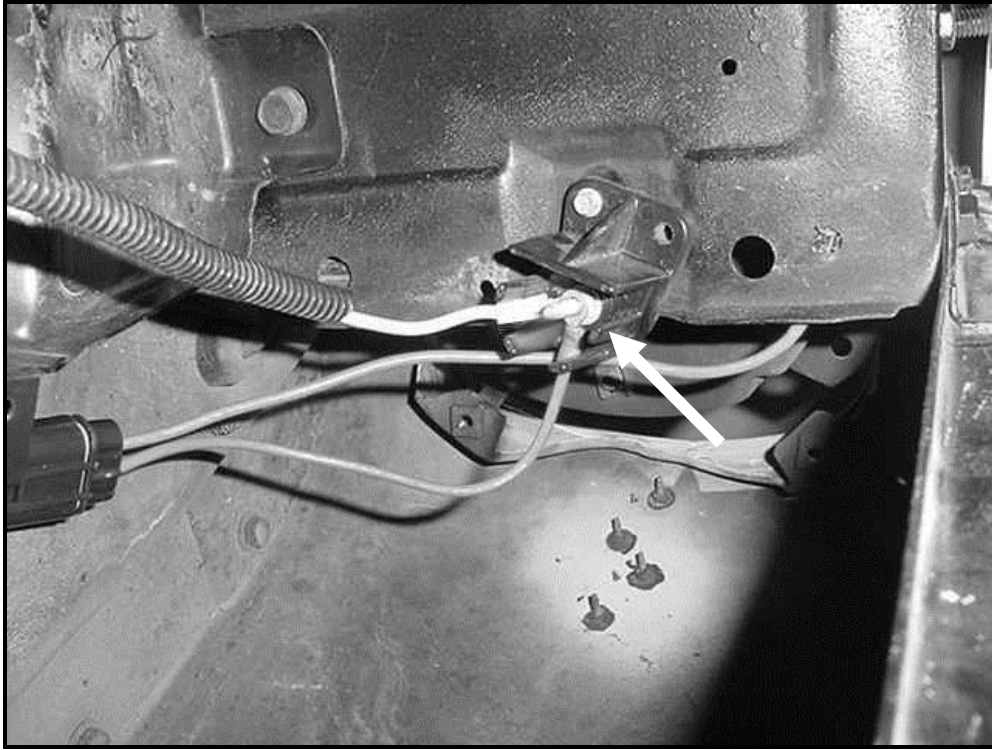


Illustration 1 B

3. Disconnect the headlight door harness from the opening and closing micro switches and from the headlight door motor pigtails located on the radiator core support and on the headlight mounting bucket housing. See **Illustration 2 A, B & C**



ILLUSTRATION 2 A

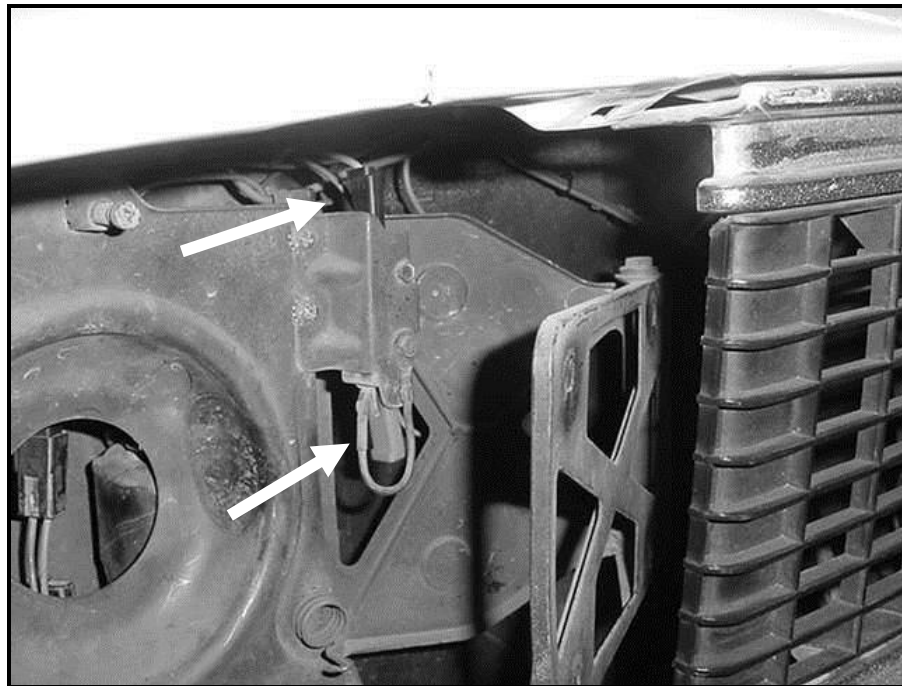


ILLUSTRATION 2 B

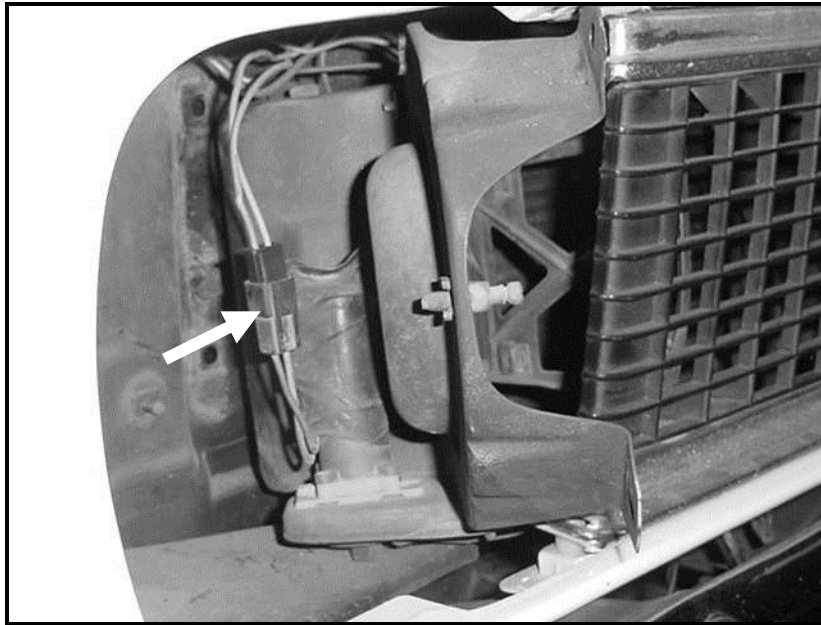


Illustration 2 C

4. Remove the old wiring harness from the radiator core support and separate the headlight door harness from the charging system, horn and lighting harness.

5. Remove the two bolts from the left hand inner fender panel that holds the relay bracket in place. See **Illustration 3**

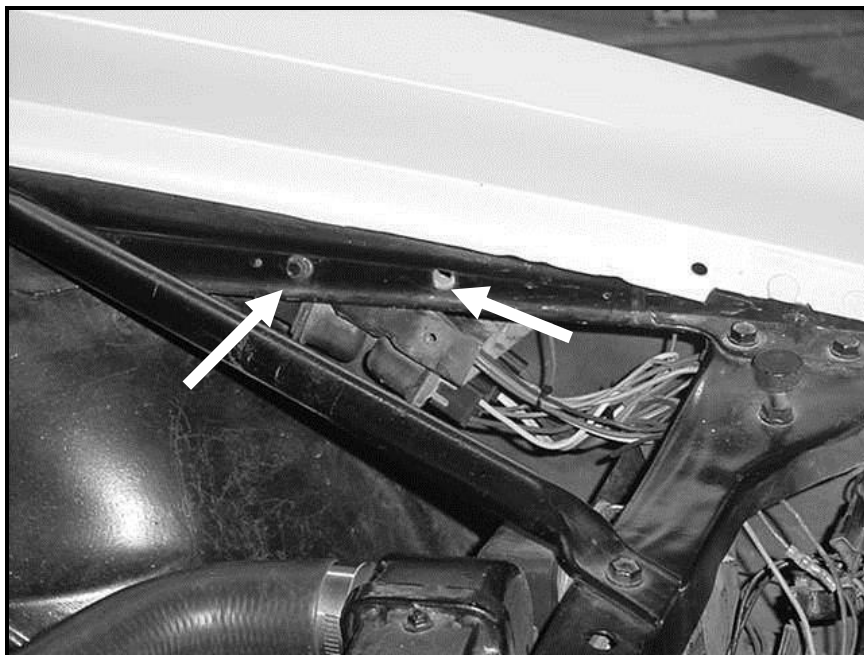


Illustration 3

6. Disconnect the headlight door harness from the instrument panel harness under the dash. These two wires should be a brown wire and a light blue wire with a black two way connector. See **Illustration 4**

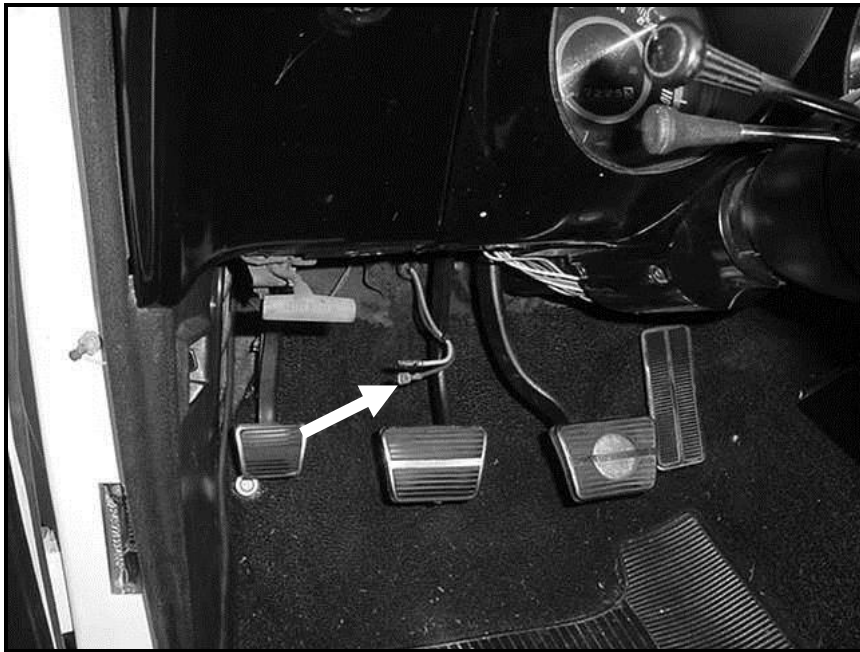


Illustration 4

7. Remove the existing headlight door harness from the vehicle

8. Route the light blue and brown wire of the new harness along the inside of the left fender, between the fender and the inner fender panel. See **Illustration 5**

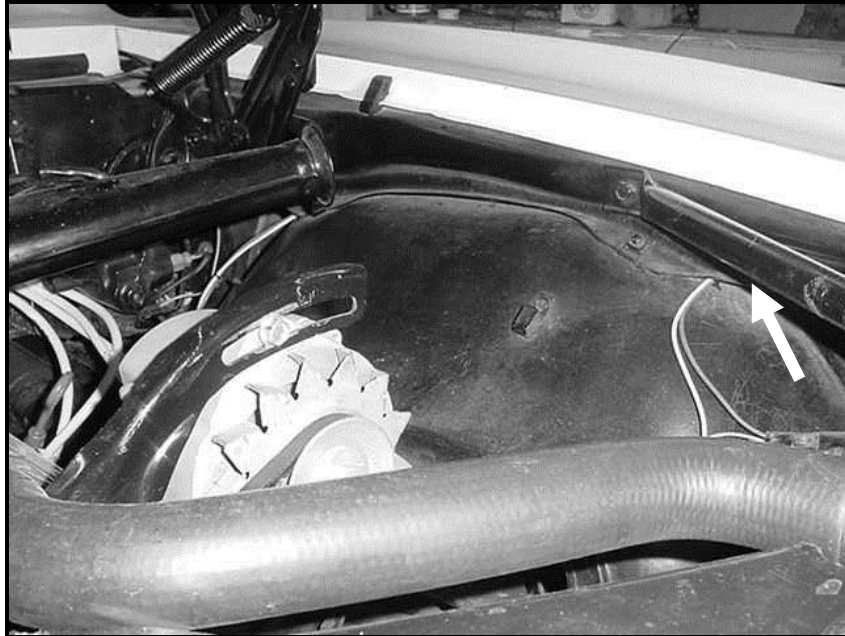


Illustration 5

9. Route these wires through the firewall at an existing grommet or you can drill a 5/16" hole close to the bulkhead connector and use the grommet that is included in the kit. Connect the two way connector to the instrument panel harness. See **Illustration 6** See **Note 1.**

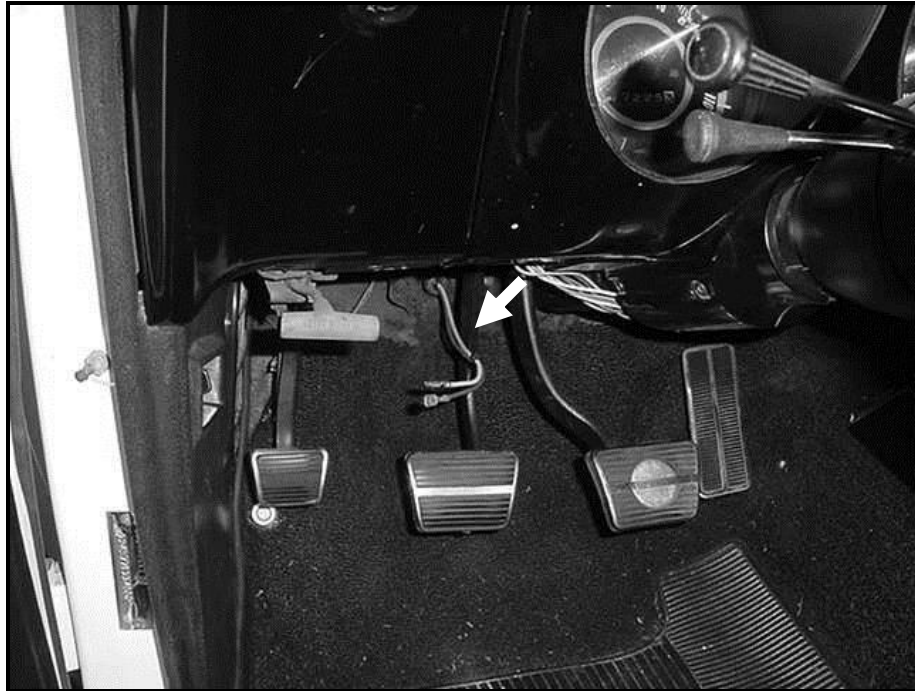


Illustration 6

10. Secure the relay section of the headlight door harness to the existing head light/park light harness.

11. Route the remainder of the headlight door harness through the opening between the left fender and the radiator core support and along the existing harness to the right side. See **Illustration 7**

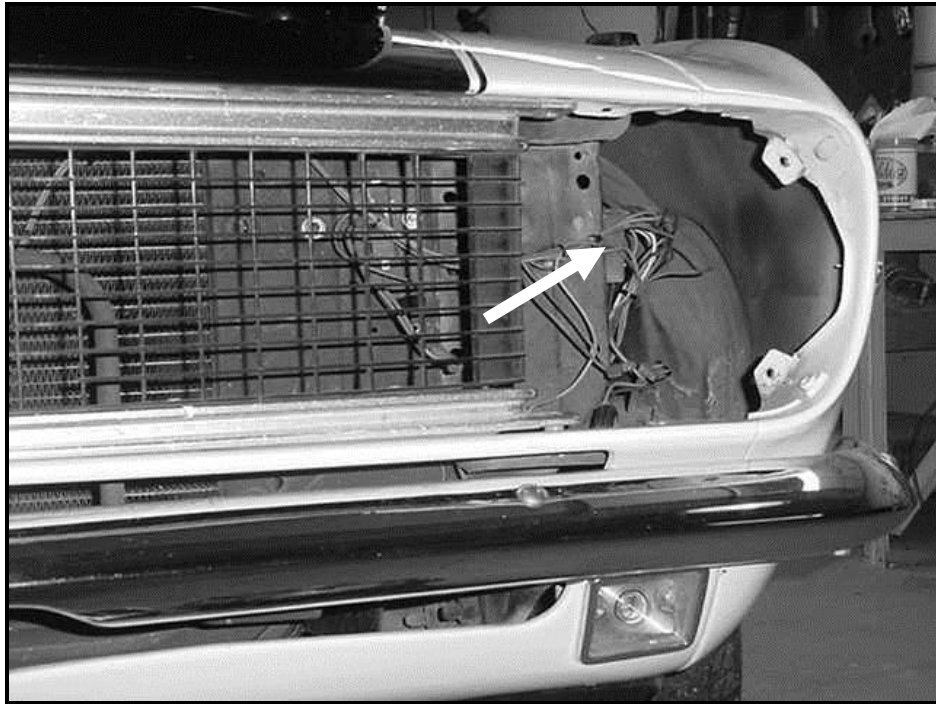


Illustration 7

12. Attach the black wire with the ring terminal on it to the existing grounding bolt located near the voltage regulator. This bolt has the charging system and head light ground attached to it. See **Illustration 8**



Illustration 8

13. Beginning on the left side, connect the two way connector with the purple and gray wire to the headlight door motor connector for the left headlight door. See **Illustration 9**

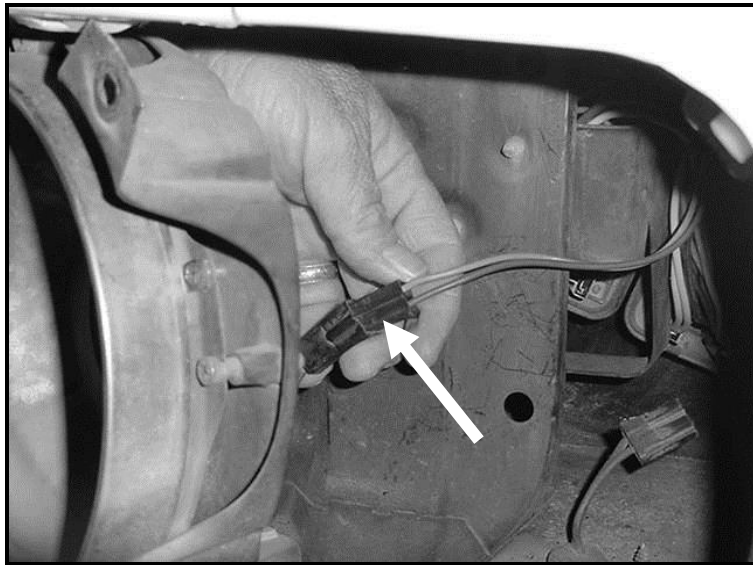


Illustration 9

14. Connect the two brown wires with the red one way connector to the lower terminal of the micro switch located on the headlight mounting bucket.

Illustration 10

15. Connect the gray wire with the black one way connector to the upper terminal of this micro switch. See **Illustration 10**

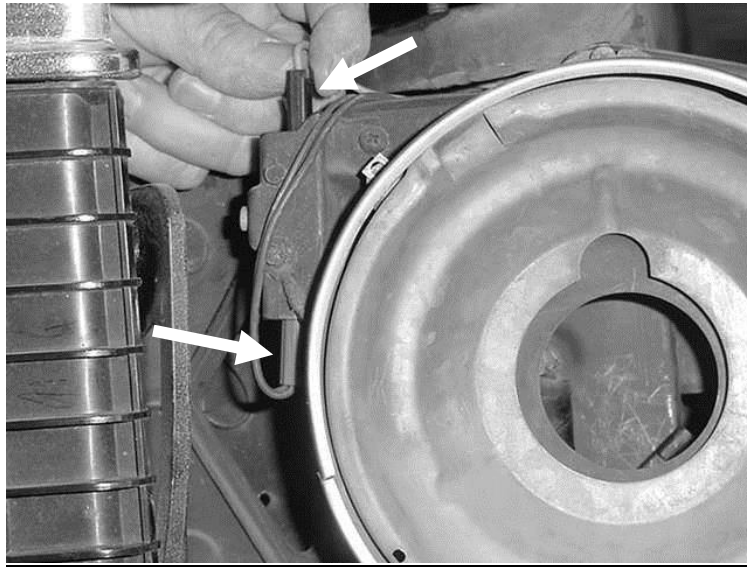


Illustration 10

16. Connect the blue wires with the red one way connector to the lower terminal of the micro switch that is mounted on the radiator core support. See **Illustration 11**

17. Connect the purple wire with the black one way connector to the upper terminal of this micro switch. See **Illustration 11**

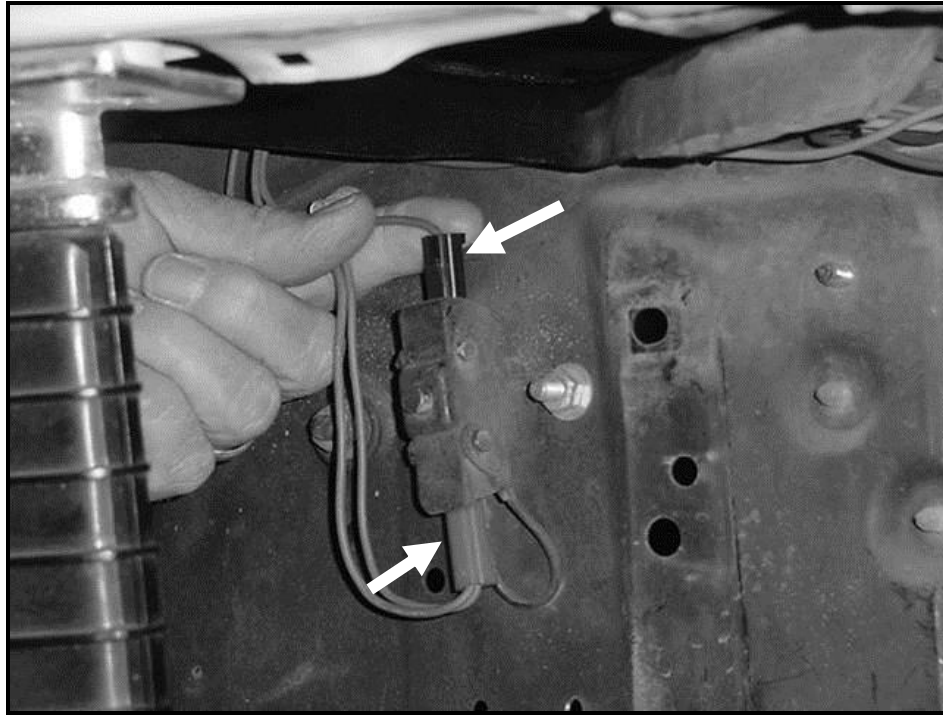


Illustration 11

18. Connect the blue wire with the red one way connector to the lower terminal of the micro switch that is mounted on the right side of the radiator core support. See **Illustration 12**

19. Connect the light green wire with the black one way connector to the upper terminal of this micro switch. See **Illustration 12**

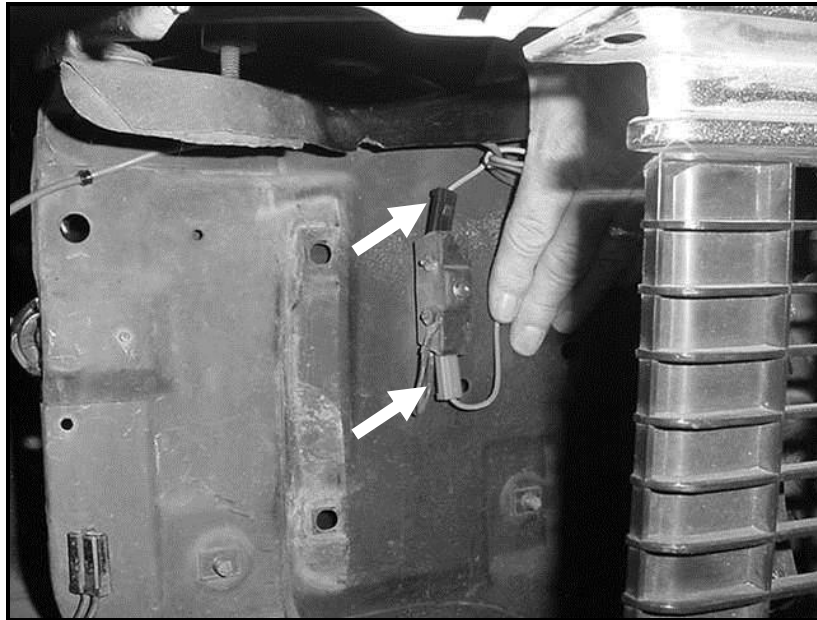


Illustration 12

20. Connect the brown wire with the red one way connector to the lower terminal of the micro switch that is mounted on the right headlight mounting bucket housing. See **Illustration 13**

21. Connect the green wire with the black one way connector to the upper terminal of this micro switch. See **Illustration 13**

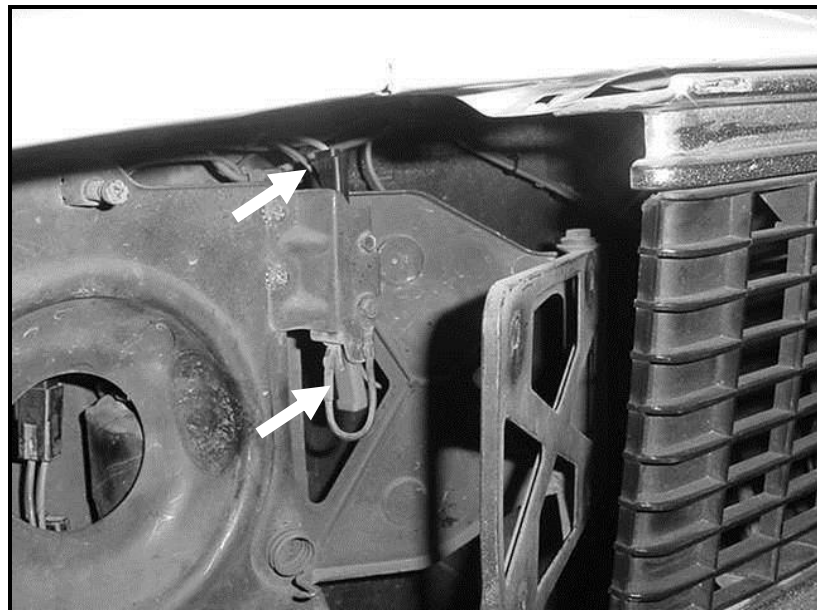


Illustration 13

22. Connect the black two way connector with the light green and green wires to the right headlight door motor connector. See **Illustration 14**

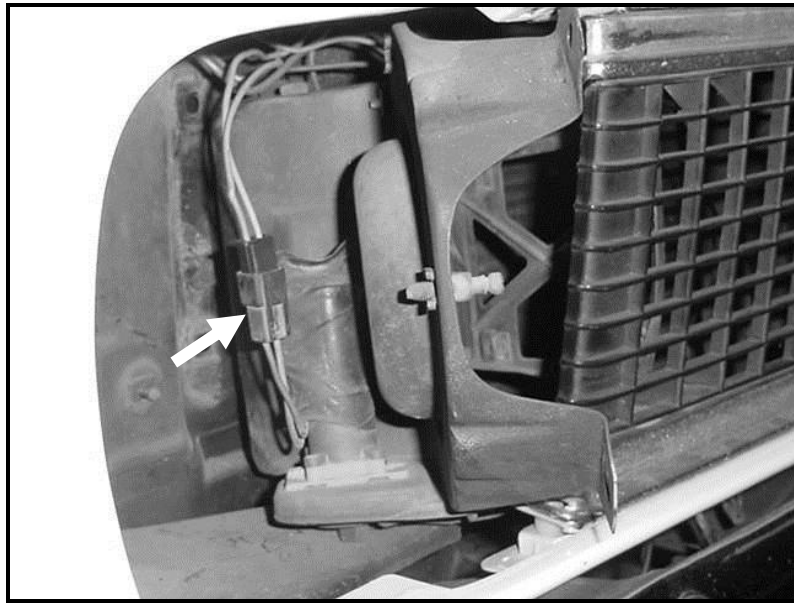


Illustration 14

23. Select a suitable and accessible location close to the battery and mount the fuse holder.

24. Attach the orange wire with the ring terminal on it, to the junction block.
See **Illustration 14 A & B**

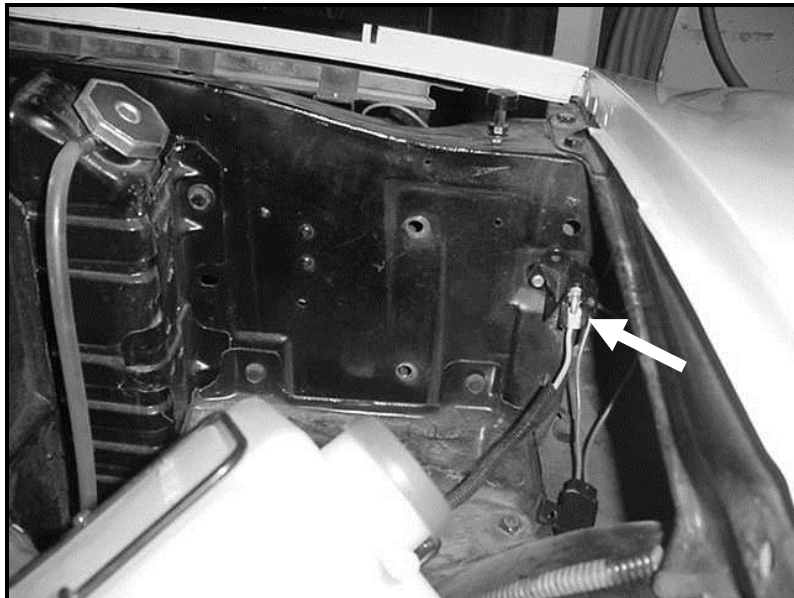


Illustration 14 A



Illustration 14 B

25. Reinstall both head lamps, and make certain that all of the ground wires are properly installed. The headlight doors will not operate properly if the **headlights or ground wires** are not installed.

26. Reinstall the battery and the fender brace.

27. After making certain everything is working properly, use the wire ties or electrical tape to secure the harnesses together. Be sure your wires are routed clear of any protruding screws, bolts, and other sharp edges that could damage the wiring.

NOTE 1 If you are installing a complete new chassis harness and you do not have the separate Instrument panel harness, connect the blue wire from the headlight door harness to the #6 terminal of the headlight switch. Connect the brown wire from the headlight door harness to the accessory terminal of the ignition switch.

We have attempted to provide you with as accurate instructions as possible, and are always concerned about corrections or improvements that can be made. If you have found any errors or omissions, or if you simply have comments or suggestions concerning these instructions, please write us at the address on the cover and let us know about them.

Painless Performance Limited Warranty

Chassis harnesses and fuel injection harnesses are covered under a lifetime warranty. All other products manufactured and/or sold by Painless Performance are warranted to the original purchaser to be free from defects in material and workmanship under normal use. Painless Performance will repair or replace defective products without charge during the first 12 months from the purchase date. No products will be considered for warranty without a copy of the purchase receipt showing the sellers name, address and date of purchase.