

MAIN DRIVE GEAR

EM67350



Description:	MAIN DRIVE GEAR
SKU:	EM67350
OEM:	764KB4203D
Product Group:	TRANSMISSION
Product Class:	GEARS, SHAFTS, CLUTCHES
UPC Code:	193807047245
Sell Pack:	1 EA
Weight:	12.65 LBS
Package Dimensions (LxWxH):	18 x 4 x 4 inches
Warranty:	1 Year



Details:	
Main Drive Gear w/o Oil Pump Mack T309L / T310 / T2080B / T313L / T318L / T310M / T2050 / T2060 / T2070 / T2070 A/B/D / T2080 / T200 / T2100 / T2110 B/D / T2130 / T2180 Application	

Substitute:				
SKU	Sell Pack	Weight	Warranty	Description
GGB-6735	1	12.55 LBS	2 Years	MAIN DRIVE GEAR

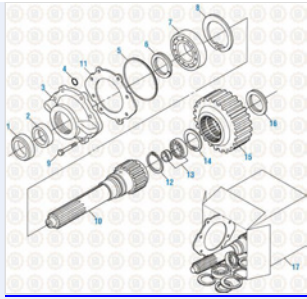
E-Catalog Pages:	
Catalog Page	Description
<p>An exploded view diagram of the Drive Train 2016 Input Shaft Components for T2080B. The diagram shows various parts including gears, shafts, and bearings, with the main drive gear highlighted in blue.</p>	<p>Drive Train 2016 Input Shaft Components - T2080B</p>

Copyright © 2020 PAI Industries, Inc.
All rights reserved. All content is property of PAI Industries, Inc, and may not be reproduced or redistributed in any form.

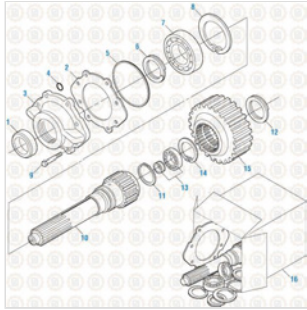
Any reference to OEM names or OEM product identification numbers/descriptions/model numbers is for identification only and does not indicate that it is an OEM part. PAI is not affiliated with Mack Truck, Inc.®, Volvo®, Fuller®, Cummins®, Eaton®, Rockwell®, Caterpillar®, Freightliner®, Hendrickson®, Kenworth®, Detroit Diesel®, International®, Peterbilt®, or Dana®. All Manufacturer's names, numbers, symbols and descriptions are used for reference only. It is not implied that any part listed is the product of these manufacturers.

MAIN DRIVE GEAR

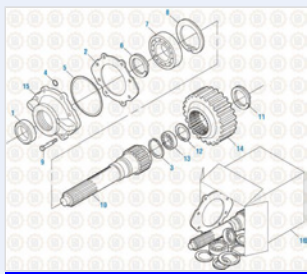
EM67350



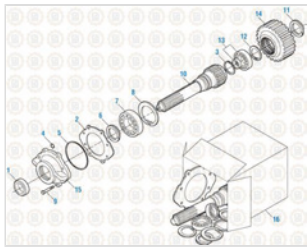
Drive Train 2016
Input Shaft - T2080, T2090 and T2100



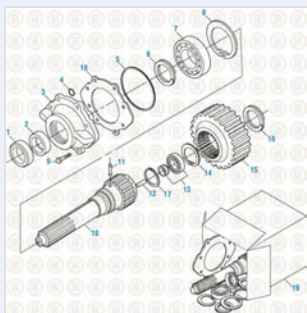
Drive Train 2016
Input Shaft Components - T2110 B and D



Drive Train 2016
Input Shaft Components - T2050



Drive Train 2016
Input Shaft Components - T2060 & T2070



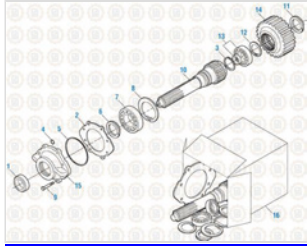
Drive Train 2016
Input Shaft Components - T2130 and T2180

Copyright © 2020 PAI Industries, Inc.
All rights reserved. All content is property of PAI Industries, Inc, and may not be reproduced or redistributed in any form.

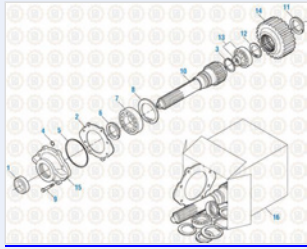
Any reference to OEM names or OEM product identification numbers/descriptions/model numbers is for identification only and does not indicate that it is an OEM part. PAI is not affiliated with Mack Truck, Inc.®, Volvo®, Fuller®, Cummins®, Eaton®, Rockwell®, Caterpillar®, Freightliner®, Hendrickson®, Kenworth®, Detroit Diesel®, International®, Peterbilt®, or Dana®. All Manufacturer's names, numbers, symbols and descriptions are used for reference only. It is not implied that any part listed is the product of these manufacturers.

MAIN DRIVE GEAR

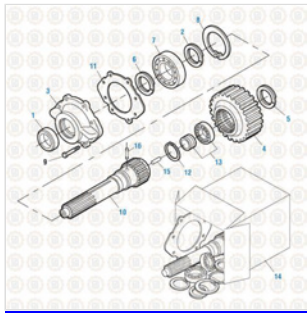
EM67350



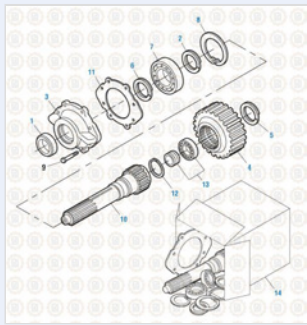
Drive Train 2016
Input Shaft Components - T2070 A & C



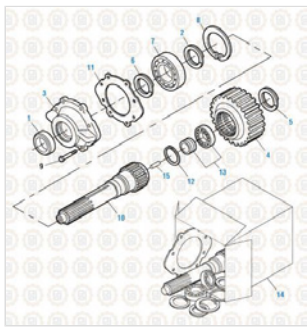
Drive Train 2016
Input Shaft Components - T2070 B & D



Drive Train 2016
T309L and T310 - Input Shaft - T309L and T310



Drive Train 2016
Input Shaft - T313L and T318L



Drive Train 2016
Input Shaft - T310M

Copyright © 2020 PAI Industries, Inc.
All rights reserved. All content is property of PAI Industries, Inc. and may not be reproduced or redistributed in any form.

Any reference to OEM names or OEM product identification numbers/descriptions/model numbers is for identification only and does not indicate that it is an OEM part. PAI is not affiliated with Mack Truck, Inc.®, Volvo®, Fuller®, Cummins®, Eaton®, Rockwell®, Caterpillar®, Freightliner®, Hendrickson®, Kenworth®, Detroit Diesel®, International®, Peterbilt®, or Dana®. All Manufacturer's names, numbers, symbols and descriptions are used for reference only. It is not implied that any part listed is the product of these manufacturers.


MAIN DRIVE GEAR

EM67350

Consists Of:

SKU	OEM	Image	Description	Quantity
EM67350-001	25503799	.	INPUT SHAFT	1
EM66200	67AX311	.	BEARING	1
ESR-2832	97AX125		RING	1

Component Of:

SKU	Image	Description
806850		INPUT SHAFT KIT

Cross Reference:

Manufacturer	OEM Number
MACK	764KB288A
MACK	764KB288
MACK	764KB4203D
MACK	25503799

Copyright © 2020 PAI Industries, Inc.
 All rights reserved. All content is property of PAI Industries, Inc. and may not be reproduced or redistributed in any form.

Any reference to OEM names or OEM product identification numbers/descriptions/model numbers is for identification only and does not indicate that it is an OEM part. PAI is not affiliated with Mack Truck, Inc.®, Volvo®, Fuller®, Cummins®, Eaton®, Rockwell®, Caterpillar®, Freightliner®, Hendrickson®, Kenworth®, Detroit Diesel®, International®, Peterbilt®, or Dana®. All Manufacturer's names, numbers, symbols and descriptions are used for reference only. It is not implied that any part listed is the product of these manufacturers.