

PLUG

BPP-3568



Description: PLUG
SKU: BPP-3568
OEM: 49AX73
Product Group: CAB
Product Class: PLUMBING FITTINGS
UPC Code: 193807205829
Sell Pack: 5 EA
 (Available to buy in increments of 5)
Weight: 0.51 LBS
Warranty: 2 Years



Details:

Pipe Fitting
 Tapered Thread Plug
 1/2in-14 Thread
 .56in Length
 9/16in Square
 Steel
 Magnetic

E-Catalog Pages:

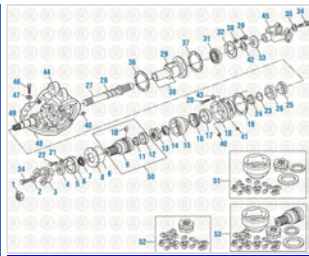
Catalog Page	Description

Copyright © 2020 PAI Industries, Inc.
 All rights reserved. All content is property of PAI Industries, Inc, and may not be reproduced or redistributed in any form.

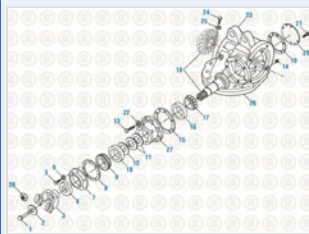
Any reference to OEM names or OEM product identification numbers/descriptions/model numbers is for identification only and does not indicate that it is an OEM part. PAI is not affiliated with Mack Truck, Inc.®, Volvo®, Fuller®, Cummins®, Eaton®, Rockwell®, Caterpillar®, Freightliner®, Hendrickson®, Kenworth®, Detroit Diesel®, International®, Peterbilt®, or Dana®. All Manufacturer's names, numbers, symbols and descriptions are used for reference only. It is not implied that any part listed is the product of these manufacturers.

PLUG

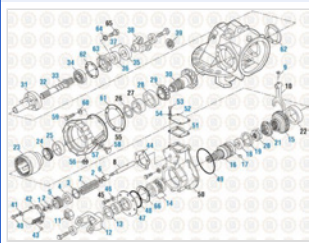
BPP-3568



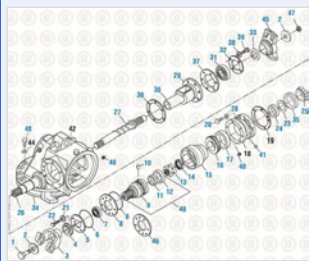
Drive Train 2016
CRDPC 92/112



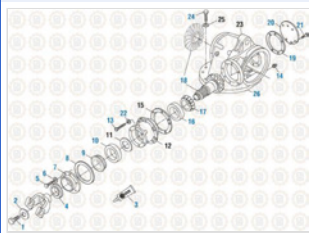
Drive Train 2016
CRD 93/113



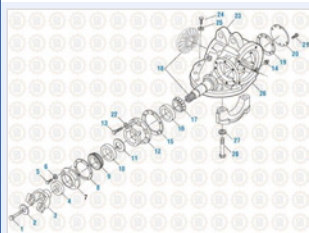
Drive Train 2016
CRDP 95 - Differential



Drive Train 2016
CRDP 200/202



Drive Train 2016
CRD 201/203



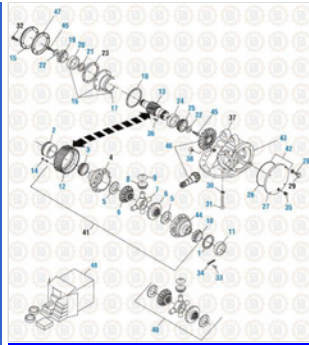
Drive Train 2016
CRD 93A

Copyright © 2020 PAI Industries, Inc.
All rights reserved. All content is property of PAI Industries, Inc. and may not be reproduced or redistributed in any form.

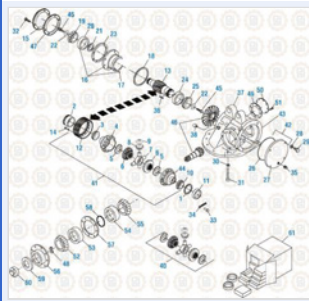
Any reference to OEM names or OEM product identification numbers/descriptions/model numbers is for identification only and does not indicate that it is an OEM part. PAI is not affiliated with Mack Truck, Inc.®, Volvo®, Fuller®, Cummins®, Eaton®, Rockwell®, Caterpillar®, Freightliner®, Hendrickson®, Kenworth®, Detroit Diesel®, International®, Peterbilt®, or Dana®. All Manufacturer's names, numbers, symbols and descriptions are used for reference only. It is not implied that any part listed is the product of these manufacturers.

PLUG

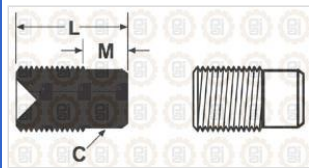
BPP-3568



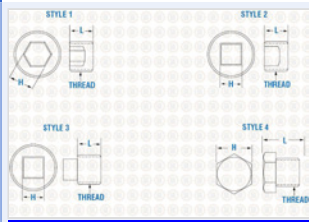
Drive Train 2016
CRD 150



PAI Mack & Volvo Applications 2018
Components - CRD 151



Hardware
External Drive Pipe Plugs



Hardware
Tapered Thread Plugs

Cross Reference:

Manufacturer	OEM Number
MACK	25499271
MACK	49AX73

Copyright © 2020 PAI Industries, Inc.
All rights reserved. All content is property of PAI Industries, Inc. and may not be reproduced or redistributed in any form.

Any reference to OEM names or OEM product identification numbers/descriptions/model numbers is for identification only and does not indicate that it is an OEM part. PAI is not affiliated with Mack Truck, Inc.®, Volvo®, Fuller®, Cummins®, Eaton®, Rockwell®, Caterpillar®, Freightliner®, Hendrickson®, Kenworth®, Detroit Diesel®, International®, Peterbilt®, or Dana®. All Manufacturer's names, numbers, symbols and descriptions are used for reference only. It is not implied that any part listed is the product of these manufacturers.