

ADJUSTING LEVER

GLE-3561



Description:	ADJUSTING LEVER
SKU:	GLE-3561
OEM:	14RU265B
Product Group:	CLUTCH & CLUTCH RELEASE PARTS
Product Class:	CLUTCH RELEASE PARTS (BELL HOUSING RELATED)
UPC Code:	193807205737
Sell Pack:	1 EA
Weight:	1.04 LBS
Package Dimensions (LxWxH):	3 x 3 x 4 inches
Warranty:	2 Years



Details:

Adjusting Lever
 Straight Side Spline
 Mack Multiple Use Engine application
 Drive Train T2110B and D/T2080B/T2050/T2060A application

E-Catalog Pages:

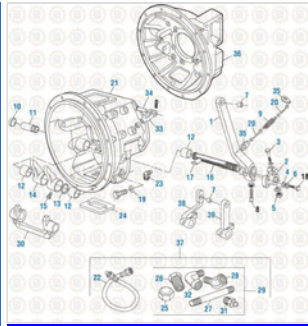
Catalog Page	Description

Copyright © 2020 PAI Industries, Inc.
 All rights reserved. All content is property of PAI Industries, Inc, and may not be reproduced or redistributed in any form.

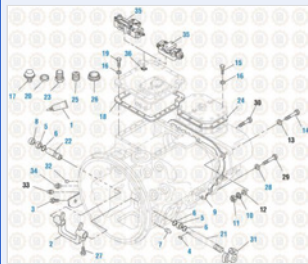
Any reference to OEM names or OEM product identification numbers/descriptions/model numbers is for identification only and does not indicate that it is an OEM part. PAI is not affiliated with Mack Truck, Inc.®, Volvo®, Fuller®, Cummins®, Eaton®, Rockwell®, Caterpillar®, Freightliner®, Hendrickson®, Kenworth®, Detroit Diesel®, International®, Peterbilt®, or Dana®. All Manufacturer's names, numbers, symbols and descriptions are used for reference only. It is not implied that any part listed is the product of these manufacturers.

ADJUSTING LEVER

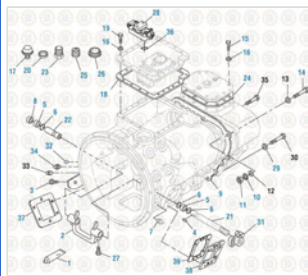
GLE-3561



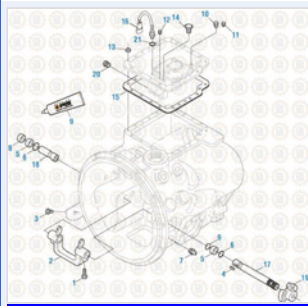
Drive Train 2016
Bell Housing - Mack Application - Transmission



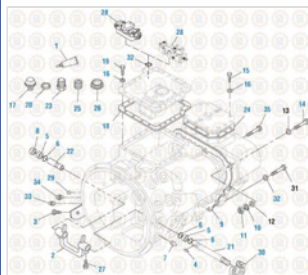
Drive Train 2016
Compound and Main Case Assembly - T2080B



Drive Train 2016
Compound and Main Case Assembly - T2080, T2090 and T2100



Drive Train 2016
Case and Cover Assemblies - T2050



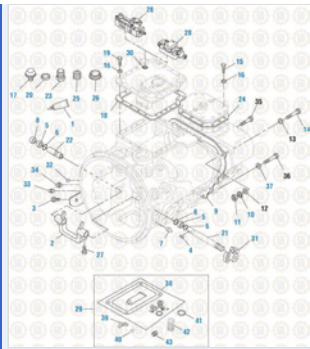
Drive Train 2016
Compound and Main Case Assembly - T2060 & T2070

Copyright © 2020 PAI Industries, Inc.
All rights reserved. All content is property of PAI Industries, Inc, and may not be reproduced or redistributed in any form.

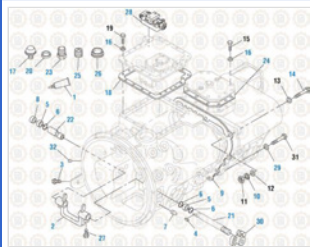
Any reference to OEM names or OEM product identification numbers/descriptions/model numbers is for identification only and does not indicate that it is an OEM part. PAI is not affiliated with Mack Truck, Inc.®, Volvo®, Fuller®, Cummins®, Eaton®, Rockwell®, Caterpillar®, Freightliner®, Hendrickson®, Kenworth®, Detroit Diesel®, International®, Peterbilt®, or Dana®. All Manufacturer's names, numbers, symbols and descriptions are used for reference only. It is not implied that any part listed is the product of these manufacturers.

ADJUSTING LEVER

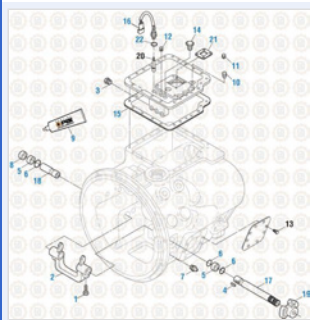
GLE-3561



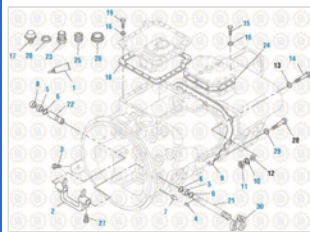
Drive Train 2016
Compound and Main Case Assembly - T2130 and T2180



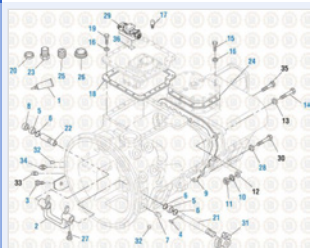
Drive Train 2016
Compound and Main Case Assembly - T2110 B and D



Drive Train 2016
Case and Cover Assembly - T2060A



Drive Train 2016
Compound & Main Case Assembly - T2070 A & C



Drive Train 2016
Compound & Main Case Assembly - T2070 B & D

Cross Reference:

Manufacturer

OEM Number

Copyright © 2020 PAI Industries, Inc.
All rights reserved. All content is property of PAI Industries, Inc. and may not be reproduced or redistributed in any form.

Any reference to OEM names or OEM product identification numbers/descriptions/model numbers is for identification only and does not indicate that it is an OEM part. PAI is not affiliated with Mack Truck, Inc.®, Volvo®, Fuller®, Cummins®, Eaton®, Rockwell®, Caterpillar®, Freightliner®, Hendrickson®, Kenworth®, Detroit Diesel®, International®, Peterbilt®, or Dana®. All Manufacturer's names, numbers, symbols and descriptions are used for reference only. It is not implied that any part listed is the product of these manufacturers.

ADJUSTING LEVER

GLE-3561

MACK	25163390
MACK	14RU265BP2
MACK	14RU265B
MACK	14RU265A
MACK	14RU265
MACK	33MX316

Copyright © 2020 PAI Industries, Inc.

All rights reserved. All content is property of PAI Industries, Inc, and may not be reproduced or redistributed in any form.

Any reference to OEM names or OEM product identification numbers/descriptions/model numbers is for identification only and does not indicate that it is an OEM part. PAI is not affiliated with Mack Truck, Inc.®, Volvo®, Fuller®, Cummins®, Eaton®, Rockwell®, Caterpillar®, Freightliner®, Hendrickson®, Kenworth®, Detroit Diesel®, International®, Peterbilt®, or Dana®. All Manufacturer's names, numbers, symbols and descriptions are used for reference only. It is not implied that any part listed is the product of these manufacturers.