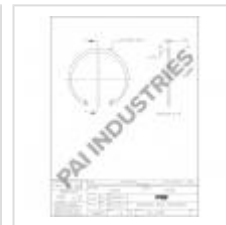


# RING

# GRI-2798



**Description:** RING  
**SKU:** GRI-2798  
**OEM:** 97AX262  
**Product Group:** TRANSMISSION  
**Product Class:** GEARS, SHAFTS, CLUTCHES  
**UPC Code:** 193807197209  
**Sell Pack:** 5 EA  
 (Available to buy in increments of 5)  
**Weight:** 0.65 LBS  
**Warranty:** 2 Years



**Details:**  
 Internal Retaining Ring  
 5.485in free O.D. x 0.109in thick  
 139.31mm free O.D. x 2.76mm thick

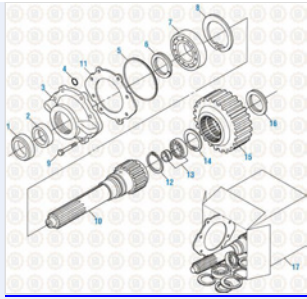
E-Catalog Pages:	
Catalog Page	Description
	<p><b>Drive Train 2016</b>                      Input Shaft Components - T2080B</p>

Copyright © 2020 PAI Industries, Inc.  
 All rights reserved. All content is property of PAI Industries, Inc. and may not be reproduced or redistributed in any form.

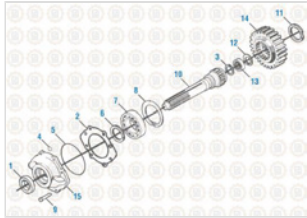
Any reference to OEM names or OEM product identification numbers/descriptions/model numbers is for identification only and does not indicate that it is an OEM part. PAI is not affiliated with Mack Truck, Inc.®, Volvo®, Fuller®, Cummins®, Eaton®, Rockwell®, Caterpillar®, Freightliner®, Hendrickson®, Kenworth®, Detroit Diesel®, International®, Peterbilt®, or Dana®. All Manufacturer's names, numbers, symbols and descriptions are used for reference only. It is not implied that any part listed is the product of these manufacturers.

## RING

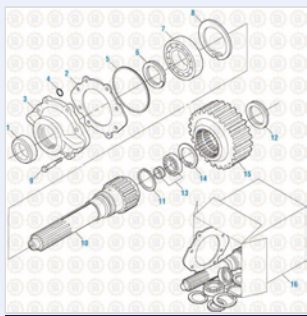
## GRI-2798



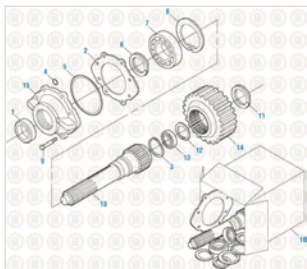
**Drive Train 2016**  
Input Shaft - T2080, T2090 and T2100



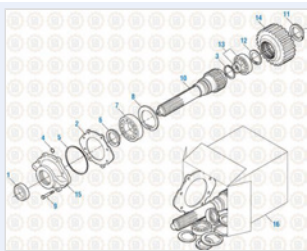
**Drive Train 2016**  
Input Shaft Components - T2060A



**Drive Train 2016**  
Input Shaft Components - T2110 B and D



**Drive Train 2016**  
Input Shaft Components - T2050



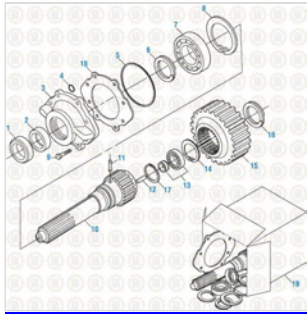
**Drive Train 2016**  
Input Shaft Components - T2060 & T2070

Copyright © 2020 PAI Industries, Inc.  
All rights reserved. All content is property of PAI Industries, Inc. and may not be reproduced or redistributed in any form.

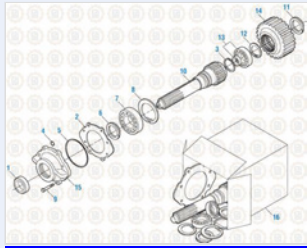
Any reference to OEM names or OEM product identification numbers/descriptions/model numbers is for identification only and does not indicate that it is an OEM part. PAI is not affiliated with Mack Truck, Inc.®, Volvo®, Fuller®, Cummins®, Eaton®, Rockwell®, Caterpillar®, Freightliner®, Hendrickson®, Kenworth®, Detroit Diesel®, International®, Peterbilt®, or Dana®. All Manufacturer's names, numbers, symbols and descriptions are used for reference only. It is not implied that any part listed is the product of these manufacturers.

## RING

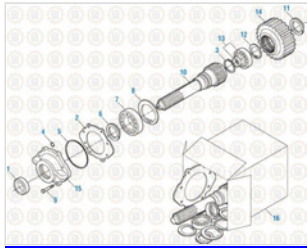
## GRI-2798



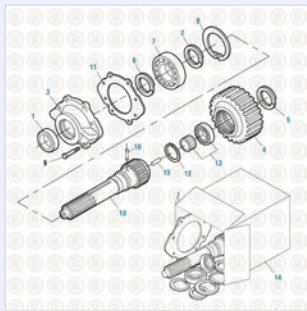
**Drive Train 2016**  
Input Shaft Components - T2130 and T2180



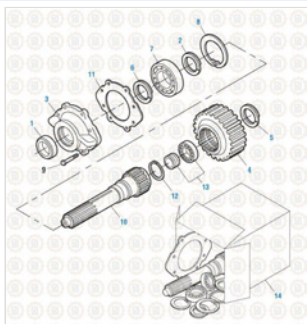
**Drive Train 2016**  
Input Shaft Components - T2070 A & C



**Drive Train 2016**  
Input Shaft Components - T2070 B & D



**Drive Train 2016**  
T309L and T310 - Input Shaft - T309L and T310



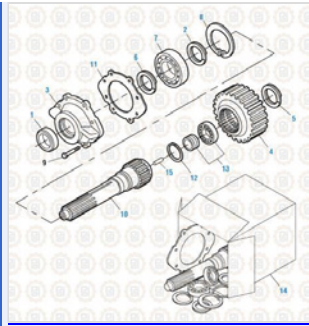
**Drive Train 2016**  
Input Shaft - T313L and T318L

Copyright © 2020 PAI Industries, Inc.  
All rights reserved. All content is property of PAI Industries, Inc. and may not be reproduced or redistributed in any form.

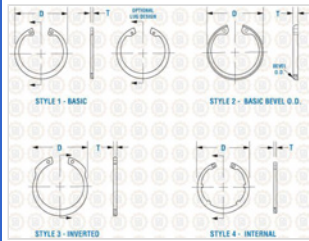
Any reference to OEM names or OEM product identification numbers/descriptions/model numbers is for identification only and does not indicate that it is an OEM part. PAI is not affiliated with Mack Truck, Inc.®, Volvo®, Fuller®, Cummins®, Eaton®, Rockwell®, Caterpillar®, Freightliner®, Hendrickson®, Kenworth®, Detroit Diesel®, International®, Peterbilt®, or Dana®. All Manufacturer's names, numbers, symbols and descriptions are used for reference only. It is not implied that any part listed is the product of these manufacturers.

# RING

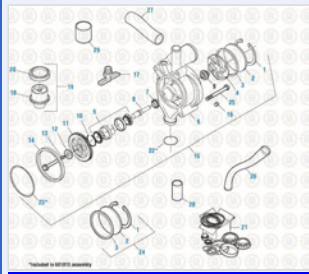
# GRI-2798



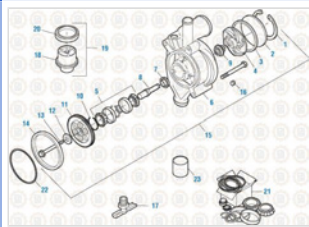
**Drive Train 2016**  
Input Shaft - T310M



**Hardware**  
Internal - Basic and Inverted




**Detroit Diesel Engine 2019**  
Water Pump and Thermostat - Series 60



**Detroit Diesel Engine 2019**  
Water Pump and Thermostat - Series 50

**Component Of:**





SKU	Image	Description
<a href="#">181875</a>	-	WATER PUMP
<a href="#">181876</a>	-	WATER PUMP
<a href="#">181881</a>	-	WATER PUMP
<a href="#">181902</a>		REAR COVER WATER PUMP REPAIR KIT

Copyright © 2020 PAI Industries, Inc.  
All rights reserved. All content is property of PAI Industries, Inc. and may not be reproduced or redistributed in any form.

Any reference to OEM names or OEM product identification numbers/descriptions/model numbers is for identification only and does not indicate that it is an OEM part. PAI is not affiliated with Mack Truck, Inc.®, Volvo®, Fuller®, Cummins®, Eaton®, Rockwell®, Caterpillar®, Freightliner®, Hendrickson®, Kenworth®, Detroit Diesel®, International®, Peterbilt®, or Dana®. All Manufacturer's names, numbers, symbols and descriptions are used for reference only. It is not implied that any part listed is the product of these manufacturers.

# RING

# GRI-2798

<a href="#">681812-100</a>		WATER PUMP
<a href="#">GRK-2771</a>		RING KIT
<a href="#">GRK-2774</a>		RETAINING RING KIT
<a href="#">GBK-6573-100</a>		RETAINING RING KIT
<a href="#">GBK-8955-100</a>		RETAINING RING KIT
<a href="#">GBK-8956-100</a>		RETAINING RING KIT
<a href="#">ERK-8997</a>		RING KIT
<a href="#">806850</a>		INPUT SHAFT KIT

Cross Reference:	
Manufacturer	OEM Number
MACK	25109346
CUMMINS	3680737
DETROIT DIESEL	8922407
MACK	97AX262

Copyright © 2020 PAI Industries, Inc.  
 All rights reserved. All content is property of PAI Industries, Inc. and may not be reproduced or redistributed in any form.

Any reference to OEM names or OEM product identification numbers/descriptions/model numbers is for identification only and does not indicate that it is an OEM part. PAI is not affiliated with Mack Truck, Inc.®, Volvo®, Fuller®, Cummins®, Eaton®, Rockwell®, Caterpillar®, Freightliner®, Hendrickson®, Kenworth®, Detroit Diesel®, International®, Peterbilt®, or Dana®. All Manufacturer's names, numbers, symbols and descriptions are used for reference only. It is not implied that any part listed is the product of these manufacturers.