

Introduction and Features

RPA-KNOB1 is a complete set of two climate control knobs for 2010 - 2015 Chevrolet Camaro. They are designed to match the OE climate control knob fit and finish, providing a factory appearance in your late-model Camaro. They can be installed on our PAC RadioPRO Integrated Dash Kit RPK5-GM4101, or as a replacement for the original knobs on a factory radio.

Both knobs feature back-lit buttons to match the OE appearance, and selectable center inserts to match the vehicle options, for vehicles equipped with or not equipped with heated seats.

Very Important Notes

Note 1: The center inserts are made to install once! They are not easily removable / swappable.

Please ensure you have selected the correct inserts for your installation before snapping the inserts into the control knobs.

In the event that the center inserts need to be removed, see the troubleshooting section on page 2.

Note 2: For vehicles with heated seats: When installing the center caps, you need to first install the light pipes. They are keyed so they will only fit one way. Pay close attention to the shape and orientation of the light pipes to ensure correct lighting.

Note 3: In this manual we will refer to "Left" indicating the driver side, and "Right" indicating the passenger side.

Pre-installation setup

For vehicles without heated seats: Remove the center cap called "Blank Left" and snap that into the climate control knob labeled Left. The insert is keyed, so it will only fit in one orientation. Remove the center cap called "Blank Right" and snap it into the climate control knob labeled Right.

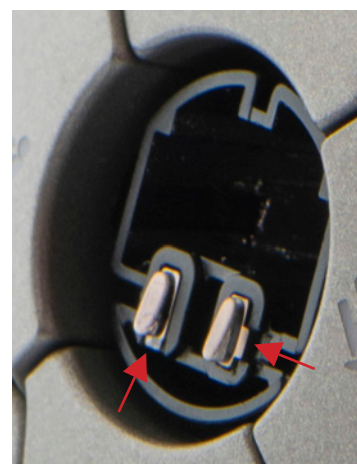
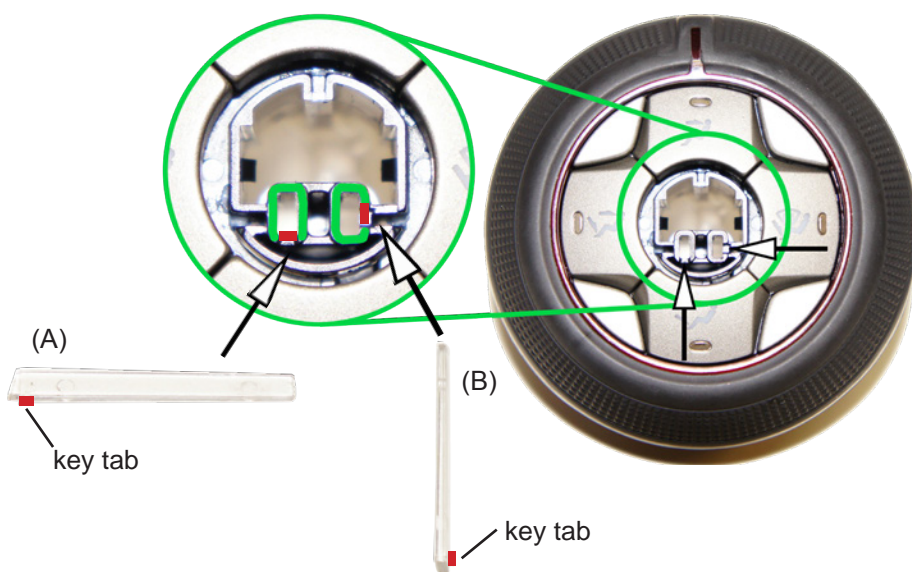
For vehicles equipped with heated seats: Carefully open the package labeled "Heated Seat Left". There will be a center cap and 2 small, clear plastic, light pipes. They are keyed, so they will only fit in one specific hole each.

From the front of the control knob, insert the light pipes (non-keyed side first) into the small rectangular openings.

The left light pipe (A) has a key tab on the narrow side. Insert this light pipe with the key facing down.

The right light pipe (B) has the key tab on the wide side. Insert this light pipe with the key facing to the right.

They are installed as shown below.



Close-up of light pipes installed

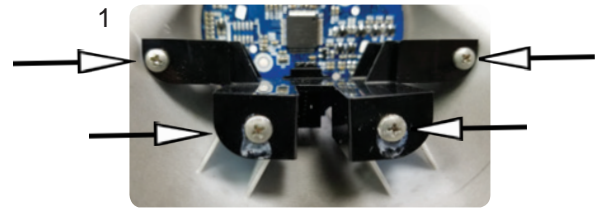
Installation Steps for RPA-KNOB1 into an OE Radio

Installation on a factory radio: 1) Remove the OE knobs. 2) The original brackets and screws will be reused. 3) Install the RPA-KNOB1 knobs by reversing the steps used to remove the OE knobs.

Installation Steps for RPA-KNOB1 into an RPK5-GM4101

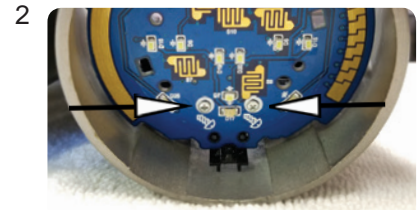
- 1) Secure the 2 support brackets to the PAC HVAC control assembly mounted in the RPK5-GM4101 main kit plastic.

Be sure the alignment tabs are seated properly in the circuit board. Carefully tighten 4 phillips screws into each bracket.



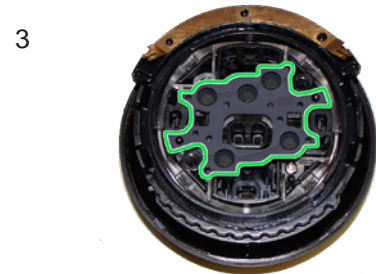
- 2) From the front side of the kit, secure the 2 support brackets to the circuit board. The small screws will pass through the front of the board where indicated, and will thread into the plastic brackets.

Be sure that the alignment tabs are seated properly.



- 3) Ensure the rubber membranes are in place behind each knob, before installing them.

They are keyed, so they will only fit correctly one way. Note the orientation in the image, with the swiper-contact at the top.

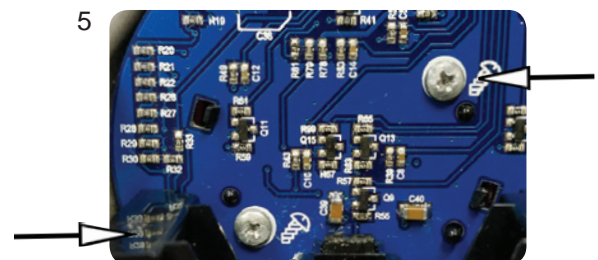


- 4) Position the knobs in the proper opening so that the buttons are straight and insert them into the opening. With VERY LITTLE force, rotate them slightly left and right while pushing them toward the circuit board.

Once the alignment tabs are lined up, they should click and lock into place. Use extra caution, as the contacts could bend while rotating.



- 5) From the back side of the kit, secure the knobs to the circuit board using the screws where indicated (2 screws per knob).



Troubleshooting

To remove / swap the center inserts in the knob assemblies:

- 1) Access the back of the control knobs.
- 2) Carefully remove the 2 small phillips screws, securing the light-pipe into the control knob assembly.
- 3) Remove the lightpipe from the control knob assembly, and set aside.
- 4) Looking down into the center of the knob assembly, notice the two gray tabs, one on each side.
- 5) Using a very small flat-blade screwdriver, carefully insert the screwdriver on the outside of the gray tabs, to disengage the latch.
- 6) Remove the center insert, and replace it with the correct insert for your vehicle (heated seats or blank).

Introduction & Features

***** This Tech bulletin DOES NOT apply to vehicles equipped with the heated seat option. *****

Installation of RPK5-GM4102 or RPA-KNOB1 into a Camaro without the heated seats option, requires the trimming of extra plastic on the back side of the blank center inserts to fit correctly into the knobs.

The center inserts are keyed so they will only fit one way, and in one specific knob each.

See the images below for reference of which extra plastic tabs need to be removed, so that the blank center caps will install correctly into the knobs.

Modification

1. Flip the blank insert face down on a flat surface.
2. Locate the 3 extra plastic tabs present on the blank center insert
3. Carefully trim off these 3 small plastic tabs, to allow the center inserts to fully seat in the climate control knobs.
4. Once these plastic tabs are removed, the center inserts should easily snap into their respective knobs.



Blank Insert Left



Blank Insert Right