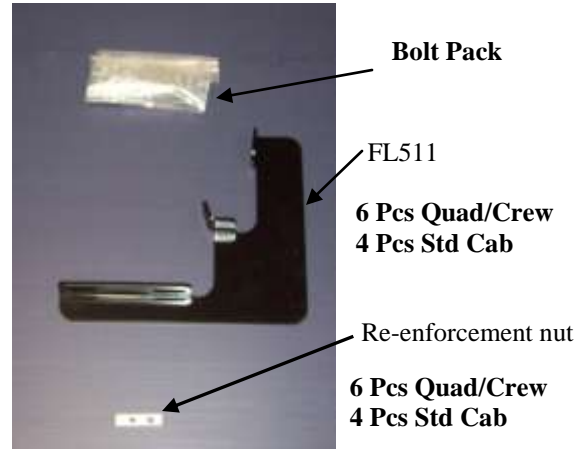


Hardware included shown on right.

Tools required:

- 1/2" socket
- 1/2" wrench
- 3/8" Nut driver on Drill
- Tape measure

**NO DRILLING INTO VEHICLE IS REQUIRED!**



**NOTE CREW CAB SHOWN IN PHOTOS!**

1)



Measure from front wheel well back and :  
Std Cab— 9 1/2" & 54"  
Quad Cab—9 1/2", 46 3/4", 74 3/8"  
Crew Cab—9 1/2", 46 3/4", 83 1/4"

2)



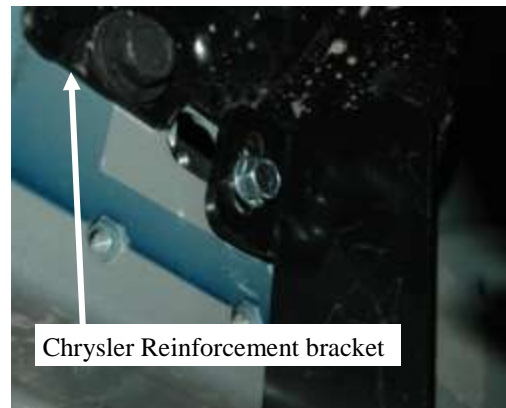
Assemble brackets as shown using one long 5/16" bolt and steel re-enforcement nut. (FL511 shown)

3)



It may be necessary to use a small screw driver to hold against the re-enforcement nut to keep it from turning while tightening the bolt.

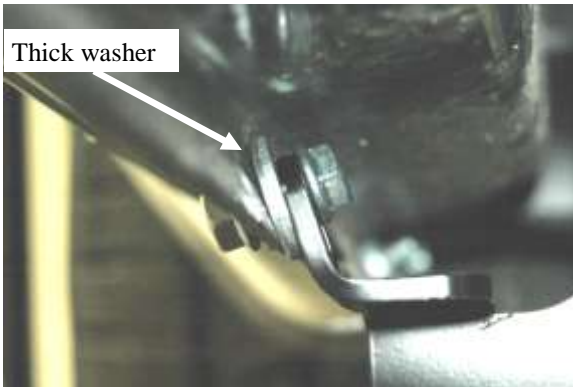
3A)



On vehicles produced after July 2015 Chrysler has added a reinforcement bracket on the driver side front location.



3B)



On vehicles produced after July 2015 Chrysler has added a reinforcement bracket on the driver side front location. Install with re-enforcement nut like previously instructed only a thick washer will be placed between bracket and pinch weld as show above.

4)



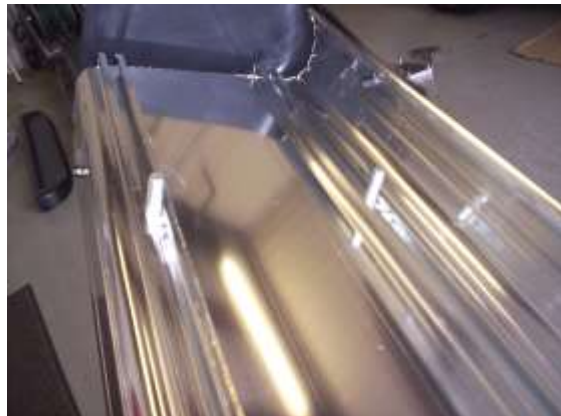
Attach brackets to vehicle by inserting the re-enforcement nut in the factory obround hole and leave out the 5/16" bolt and nut through the pinch weld at this time.

5)



Remove the small factory stone guard in the front fender well by removing the small screw and then unsnap. Reinstall the screw.

6)



Insert one square head bolt into track for each bracket.

6)



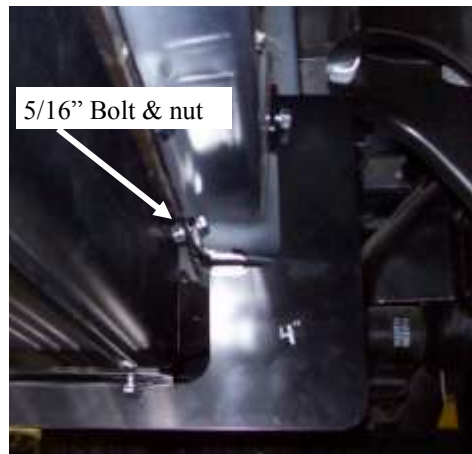
Attach the stone guard and end caps to the board with 3/8" self threading bolts. (extruded board shown)

7)



Place the board on the brackets with bolts through slots. Attach with 1/4" nuts loose.

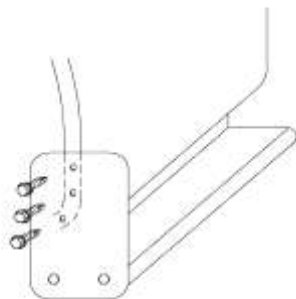
8)



5/16" Bolt & nut

At this time place 5/16" bolt through hole in pinch weld and place nut onto threads. This is done after 1/4" bolts & nut in board are placed into bracket for easier installation of 1/4" bolt into slots of brackets.

9)



Level board and attach stone guard to vehicle using the sheet metal screws that are included. Tighten all bolts on brackets and repeat for opposite side.