

Hardware included shown on right.

DRILLING INTO VEHICLE IS REQUIRED!

Tools required:

- 1/2" socket
- 1/2" WRENCH
- Drill
- 5/16 Drill bit
- 3/8" nut driver
- 7/16" Socket
- 10mm Socket



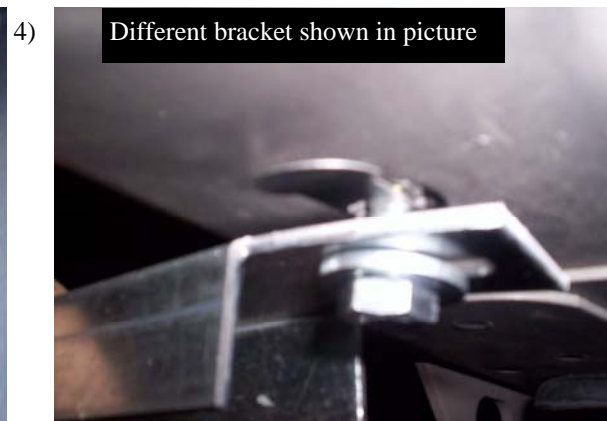
Measure from front wheel well back making a mark on the pinch weld at (**Pass side 10", 22", 38", 50", 70", 88" 100"**) (**DR side 7", 19", 36", 49"**)



Drill a 5/16" hole in pinch weld at pre-marked location, to insert a 5/16" flanged bolt through pinch weld and FL223 and FL232.



Remove tape from underbody to install 8mm pull nut at 22" 38" DR side, and 7" 19" 36" 49" pass side.



Insert a 8mm bolt and washer through slot in FL223 and attach to 8mm pull nut in underbody, at pre measured locations, in step 3. Snug but do not tighten at this time.

5)



At 102" location on pass side remove factory 10mm bolt and reinstall through slot in FL232

6)



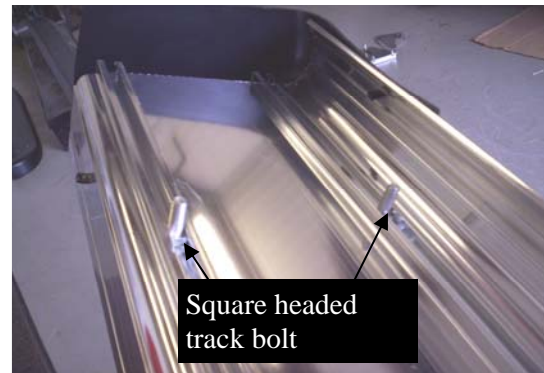
At remaining locations install two self tapping bolts through slot in FL223
(Different BRKT shown)

7)



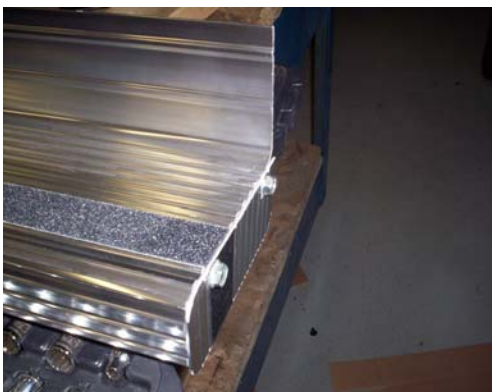
Insert a 5/16" flange bolt trough pinch weld and FL223 and FL232 tighten with a 5/16" flanged nut.
(BRKT show on outside of pinch weld for picture purpose only, BRKT mounts to inside of pinch weld)

8)



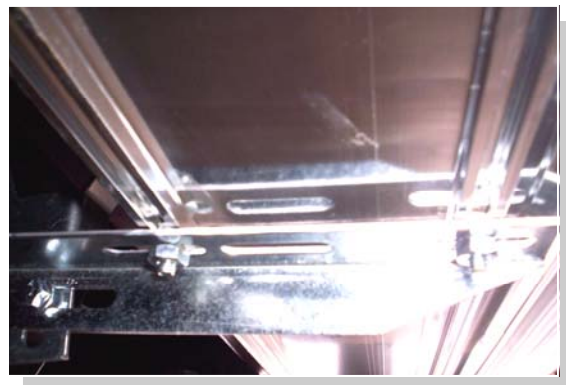
Insert one square headed track bolt into both tracks for each bracket.

9)



Attach the end caps to the board with 3/8" self threading bolts. (extruded board shown)

10)



Attach 3124F to FL217 using 5/16" nut and bolts, Snug but don't tighten. Place the board on the brackets with the bolts through the slots. Fasten with 1/4" nuts.

11) Level board and tighten all and any loose nuts and bolts. Repeat for other side.