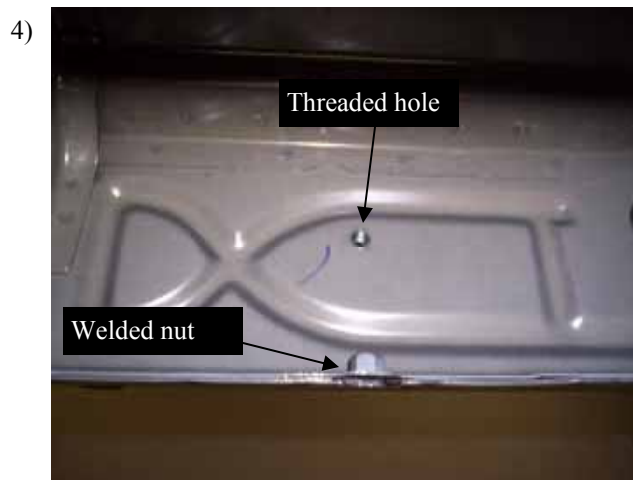
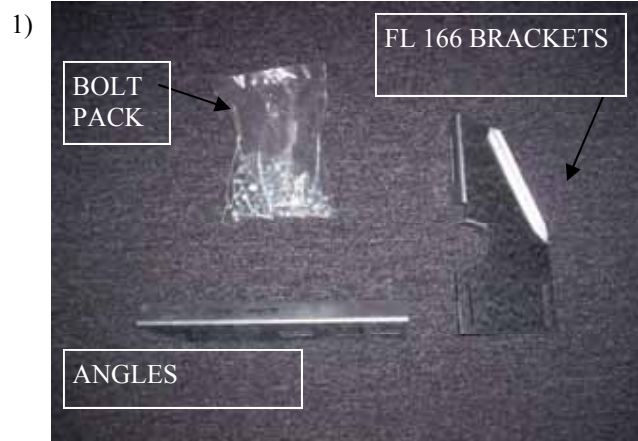


- 1) Measure from the front wheel well as shown in **FIG.2** toward the rear , at approx. distances of 17", 40", 52" or 62', and 78" you will see holes on the bottom of the rocker panel at these locations depending on your cab length these holes will be used for the **FL166** bracket attachment. STD CAB 17" & 40"; EXT CAB 17",40",52 OR 62; CREW USES ALL 4 MEASUREMENTS
- 2) We have found some differences in vehicles made in Mexico, if you look at the first number of your vehicle's serial number and it starts with a 1 or 4, that vehicle is built in the U S (like **FIG. 3**) any other number and its out of the U S and can look (like **FIG.4**) on the underside of the truck. If you do not have the threaded hole or welded nut, as shown in **FIG. 4**, install nut clip as shown in **FIG. 5**
- 3) Assemble **FL166** and angle brackets using 5/16" flanged nuts, and bolts, as shown in **Fig. 6**. Leave 5/16" flanged nuts and bolts finger tight at this time. Remove rubber plugs at measurements from mentioned above, as shown in **Fig 3**, Insert clip nuts at these measurements , as shown in **Fig 5**.

Tools required:

- 13mm socket, 1/2" wrench
- 1/2" socket, 3/8" nut driver
- Drill
- Screw driver

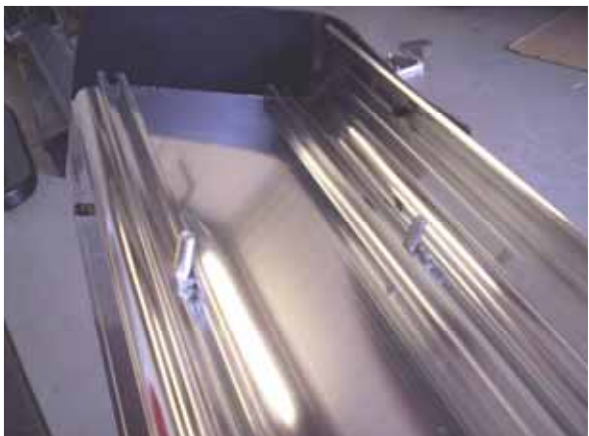


- 4) Insert one square headed track bolt into both tracks for each bracket, as shown in **Fig 7**. If board gets a stone guard and end cap, attach them using 2- 3/8" self tapping bolts, as shown in **Fig 8**.
- 5) **FOR AMERICAN BUILT VEHICLES** attach assembled brackets to vehicle at measurements 17",40",62",78" as shown in **Fig 9**. Using 5/16" flanged bolts where clip nuts were inserted into the body. Use 5/16" flanged nuts and bolts through factory holes in the pinch weld.
- 6) **FOR MEXICO BUILT VEHICLES** attach assembled brackets to vehicle at measurements 17",40",62",78" as shown in, **Fig 9**. Using 8mm bolts and washers where welded threaded nuts are on the body. Use 8mm bolts and washers through factory threaded nut on top of pinch weld, as shown in **Fig. 10,11**.
- 7) **FOR CANADIAN BUILT VEHICLES** remove the rubber plug from the body shown in Fig 3 on page 1, insert the clip nut, shown in **Fig. 5**. Attach brackets at these measurements using 5/16" flanged nuts and bolts through the hole in the pinch weld, and 5/16 flanged bolt into the clip nut.

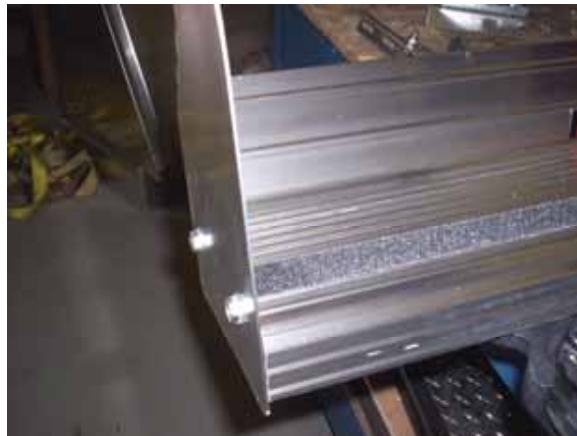
Tools required:

- 13mm socket, 1/2" wrench
- 1/2" socket, 3/8" nut driver
- Drill
- Screw driver

7)



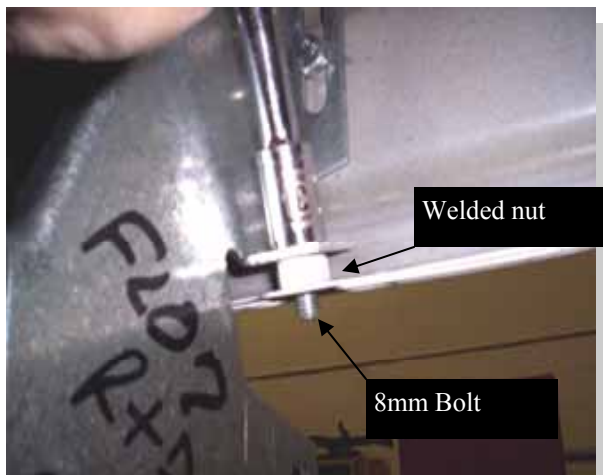
8)



9)



10)



11)

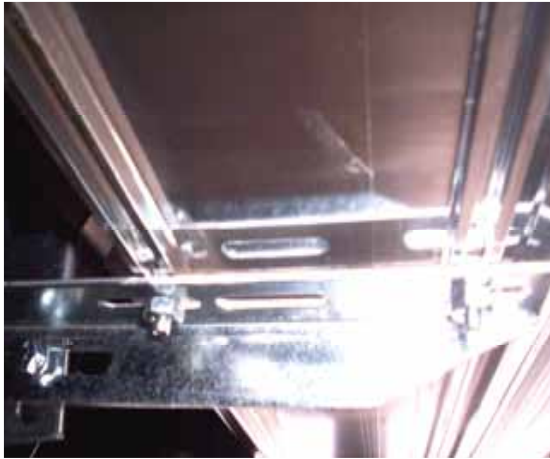


- 8) Place board on brackets, with track bolts through the angle bracket slots, as shown in **Fig. 12**.
- 9) If vehicle running board **DOES NOT** get a stone guard, center board between front wheel well and back of cab to your liking, and fasten in place with 1/4" flanged nuts as shown in **Fig 12**. Level board and tighten down 5/16" flanged nuts and bolts on bracket assembly at this time also.
- 10) If vehicle running board **HAS** a stone guard, level board to vehicle, tighten up the 5/16" flanged nuts and bolts on the bracket assembly and attach stone guard to vehicle wheel well using 3/8" self tapping screws into vehicle fender lip, as shown in **Fig 13**. Fasten board to brackets using the 1/4" flanged nuts to the track bolts as shown in **Fig. 12**.

Tools required:

- 13mm socket, 1/2" wrench
- 1/2" socket, 3/8" nut driver
- Drill
- Screw driver

12)



13)



14)

