



Sprinter 170" WB No-Drill

Product No.
Bracket Kit 10-1295

IN 580

Wide step 2" (1) Long (1) Short

Tools Required

- 1/2" Socket
- 1/2" Wrench
- 3/8" Nut driver on Drill
- 1/8" Allen wrench
- Vice Grip Pliers

Hardware Included

- BRACKETS SHOW ON RIGHT
- 1- BOLT PACK

Torque Specification:

- 1/4" Bolts - 6 Ft Lbs.
- 5/16" Bolts - 19 Ft Lbs.

Locate Driver and Passenger Bracket Locations

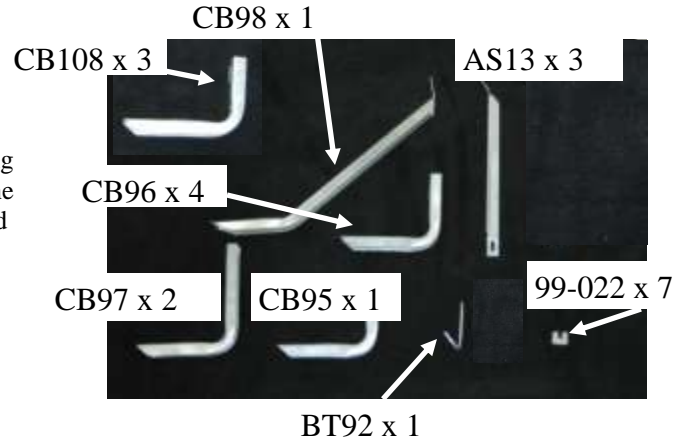
Measuring from the front wheel well back, mark the following locations on the pinch weld. There will be factory holes in line with these marks that will be used to mount the running board brackets.

DRIVER

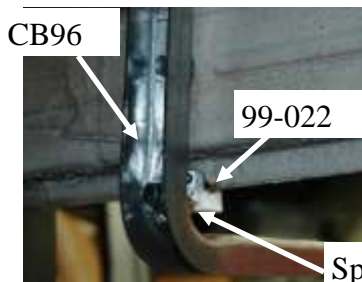
- LOCATION 1: 10 1/2"
- LOCATION 2: 23"

PASSENGER

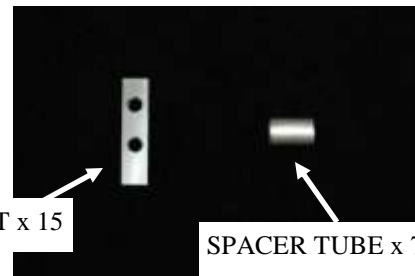
- LOCATION 1: 10 1/2"
- LOCATION 2: 23"
- LOCATION 3: 47"
- LOCATION 4: 57"
- LOCATION 5: 67"
- LOCATION 6: 76 1/2"
- LOCATION 7: 86 3/8"
- LOCATION 8: 102 1/2"
- LOCATION 9: 111 1/4"



Re-enforcement nut



Spacer tube



RE-ENFORCEMENT NUT x 15

SPACER TUBE x 7

Install in 1st location Driver side

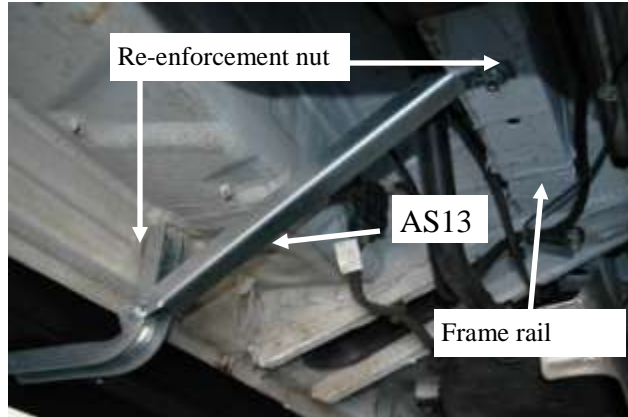
At the location 1 on Driver side and at the location 1, location 3, location 4, location 5, location 6 location 8 on the passenger side mount a 99-022 pinch weld clamp, by tightening the set screws with 1/8" Allen wrench holding with pair of vise grips for leverage.

Make sure set screws are as tight as possible.

Slide a washer on a 5/16" x 1-1/2" bolt. Then slide the bolt through the top tab of a CB96 and thread a re-enforcement nut only engaging a couple threads and slide nut into hole on rear rocker.

Tighten up the bolt into the nut but leave loose for now for adjustment later.

Slide a washer on a 5/16" x 1-1/2" bolt. Then slide the bolt through slot in rear of CB96 and spacer tube between the CB96 and 99-022 then thread into the rear of the pinch weld clamp and tighten up the bolt into the clamp but leave loose for now for adjustment later.



Install in 2nd location Driver side

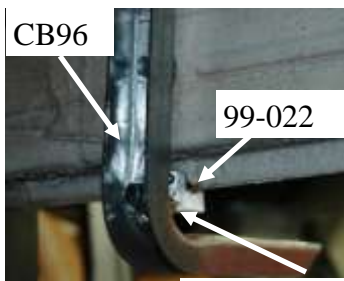
Slide a washer on a 5/16" x 1-1/2" bolt. Then slide the bolt through the top tab of a CB96 and thread a re-enforcement nut only engaging a couple threads and slide nut into hole on rear rocker.

Tighten up the bolt into the nut but leave loose for now for adjustment later.

Slide a washer on a 5/16" x 1-1/2" bolt. Then slide the bolt through the top tab of a AS13 and thread a re-enforcement nut only engaging a couple threads and slide nut into hole on frame rail. Then place a 5/16" x 3/4" bolt through the slot on AS13 then through hole in side of the CB96 and place flange nut onto the threads.

Tighten up the bolt into the nut but leave loose for now for adjustment later.

Install in 1st location Passenger side

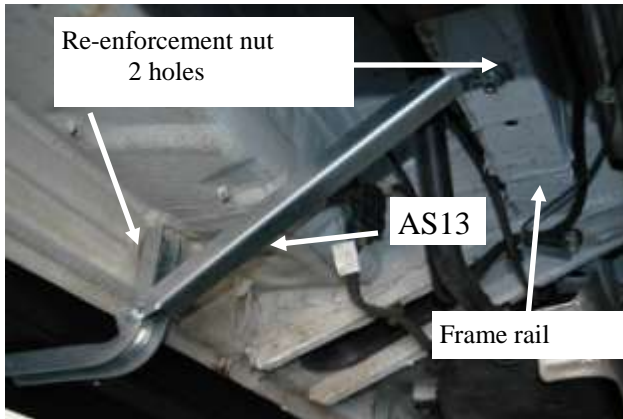


Spacer tube

Slide a washer on a 5/16" x 1-1/2" bolt. Then slide the bolt through the top tab of a CB96 and thread a re-enforcement nut only engaging a couple threads and slide nut into hole on rear rocker.

Tighten up the bolt into the nut but leave loose for now for adjustment later.

Slide a washer on a 5/16" x 1-1/2" bolt. Then slide the bolt through slot in rear of CB96 and spacer tube between the CB96 and 99-022 then thread into the rear of the pinch weld clamp and tighten up the bolt into the clamp but leave loose for now for adjustment later.



Install in 2nd location Passenger side

Slide a washer on a 5/16" x 1-1/2" bolt. Then slide the bolt through the top tab of a AS13 and thread a re-enforcement nut only engaging a couple threads and slide nut into hole on frame rail. Then place a 5/16" x 3/4" bolt through the slot on AS13 then through hole in side of the CB96 and place flange nut onto the threads.

Tighten up the bolt into the nut but leave loose for now for adjustment later.

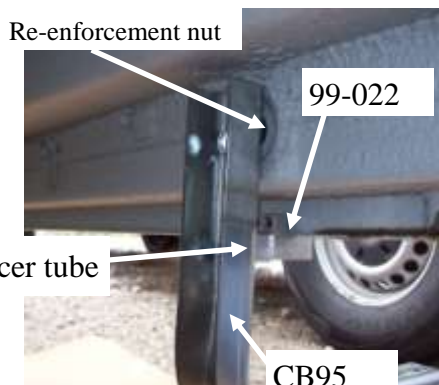


Install in 3rd and 4th and 5th location Passenger side

Slide a washer on a 5/16" x 1-1/2" bolt. Then slide the bolt through the top tab of a CB108 and thread a re-enforcement nut only engaging a couple threads and slide nut into hole on rear rocker.

Tighten up the bolt into the nut but leave loose for now for adjustment later.

Slide a washer on a 5/16" x 1-1/2" bolt. Then slide the bolt through slot in rear of CB108 and spacer tube between the CB108 and 99-022 then thread into the rear of the pinch weld clamp and tighten up the bolt into the clamp but leave loose for now for adjustment later.

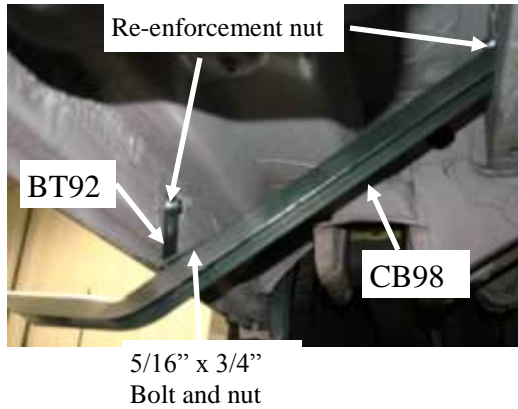


Install in 6th location Passenger side

Slide a washer on a 5/16" x 1-1/2" bolt. Then slide the bolt through the top tab of a CB95 and thread a re-enforcement nut only engaging a couple threads and slide nut into hole on rear rocker.

Tighten up the bolt into the nut but leave loose for now for adjustment later.

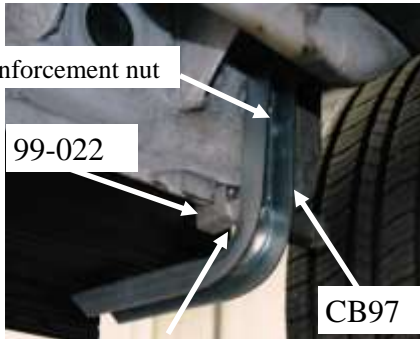
Slide a washer on a 5/16" x 1-1/2" bolt. Then slide the bolt through slot in rear of CB95 and spacer tube between the CB95 and 99-022 then thread into the rear of the pinch weld clamp and tighten up the bolt into the clamp but leave loose for now for adjustment later.



Install in 7th location Passenger side

Slide a washer on a 5/16" x 1-1/2" bolt then slide the bolt through the top tab of a BT92 and thread a re-enforcement nut only engaging a couple threads and slide nut into hole on rear rocker. Then slide a washer on a 5/16" x 1-1/2" bolt then slide the bolt through the top tab of a CB98 and thread a re-enforcement nut only engaging a couple threads and slide nut into hole in to rear of frame rail. Then place a 5/16" x 3/4" bolt through the slot on BT92 then through hole in side of the CB98 and place flange nut onto the threads.

Tighten up the bolt into the nut but leave loose for now for adjustment later.



Spacer tube

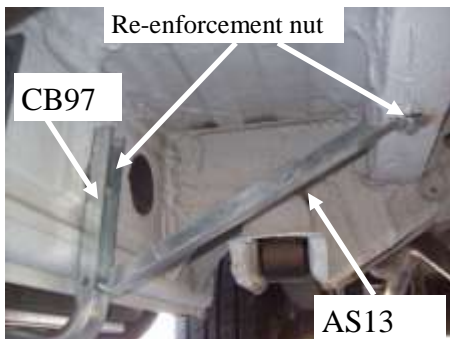
Install in 8th location Passenger side

Slide a washer on a 5/16" x 1-1/2" bolt. Then slide the bolt through the top tab of a CB97 and thread a re-enforcement nut only engaging a couple threads and slide nut into hole on rear rocker.

Tighten up the bolt into the nut but leave loose for now for adjustment later.

Slide a washer on a 5/16" x 1-1/2" bolt. Then slide the bolt through slot in rear of CB97 and spacer tube between the CB97 and 99-022 then thread into the rear of the pinch weld clamp and tighten up the bolt into the clamp but leave loose for now for adjustment later.

Photo shown on shorter wheelbase



Install in 9th location Passenger side

Slide a washer on a 5/16" x 1-1/2" bolt. Then slide the bolt through the top tab of a CB97 and thread a re-enforcement nut only engaging a couple threads and slide nut into hole on rear rocker.

Tighten up the bolt into the nut but leave loose for now for adjustment later.

Slide a washer on a 5/16" x 1-1/2" bolt. Then slide the bolt through the top tab of a AS13 and thread a re-enforcement nut only engaging a couple threads and slide nut into hole on frame rail. Then place a 5/16" x 3/4" bolt through the slot on AS13 then through hole in side of the CB97 and place flange nut onto the threads.



Sprinter 170" WB No-Drill
IN 580

Product No.
Bracket Kit 10-1295

Wide step 2" (1) Long (1) Short

Position the board so it sits flush with the rear of the front mud flap. The very top of the board should rest up against the bottom of lower rocker panel of the vehicle. Once the board is in the correct position, tighten all nuts and bolts on the mounting brackets. Repeat the same process on the passenger side.



FOR TPO BOARDS ONLY

Place the running board on the brackets and install the self tapping screws through the bracket and into the galvanized steel plate on the under side of the board.

