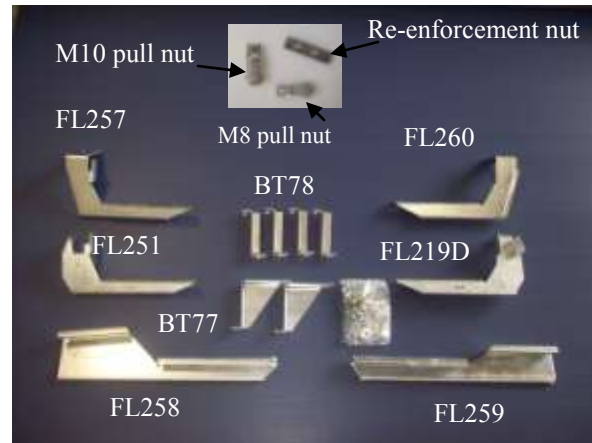


Hardware included shown on right.

**Note: No Drilling Into The Vehicle is Required**

Tools required:

- 1/2" wrench
- 1/2" socket
- 7/16" wrench
- 13mm wrench
- 15mm socket
- Drill with 3/8 nut driver



**DRIVER SIDE:** Measure from front wheel well towards the rear and make a mark on pinch weld at 20" 36" and 64". There should be a hole at these locations.



Insert 1/4" carriage bolt through hole in pinch weld @ 36" Then place M8 pull nut into hole in body just behind, put M8 bolt through hole in rear of FL219D then slide onto carriage bolt tightening M8 bolt into pull nut put 1/4" nut onto carriage bolt. Pull out rubber plug in rocker and secure BT77 repeating process like front bracket to secure FL219D to BT 77.



Insert M10 pull nut into frame rail, @ 20" then insert M10 bolt through FL259 thread into pull nut. Pull out rubber plug in rocker panel and insert 5/16" bolt through BT78 thread into re-enforcement nut, slide nut into hole on rocker and tighten up to rocker. Secure BT78 to FL259 with 5/16" bolt and nut.



Insert 1/4" carriage bolt through pinch weld @ 64" remove bolt holding fuel tank strap. (Note: fuel tank will not move) Slide FL260 onto carriage bolt and replace fuel tank bolt through FL260 and tighten. Pull rubber plug from rocker and using BT78 repeat process like other 2 brackets.



Apply foam tape and step tread as shown in picture. Center step tread between the ends of the board and keep close to outside edge.



Position [running board](#) between wheel wells for best fit. Install self tapping bolts through bracket into the shoulder of the steel channel on the bottom of the board.

7) Repeat process on passenger side using FL258, FL 251 AND FL257

