



Note: Drilling into body is required.

Hardware included shown on right.

Tools required:

- Drill
- 3/8" Nut driver
- 1/2" wrench
- 1/2" Standard socket
- Tape measure
- Drill
- 23/64" Drill bit

Please read all instructions prior to starting install.



1)



Measuring from the front wheel well, measure towards the rear of the vehicle. At locations 11 1/2", 37 3/4" and 66 1/4" make a mark on the pinch weld, from there look at frame and you will find factory holes. These measurements are used for frame hole location only

2)



At the 11 1/2" mark (front), there are 2 factory holes on the frame rail. Slip the 2" x 1/2" re-enforcement nut into the front slot.

3)



Thread 5/16" bolt through the rear slot of the FL160 bracket and into re-enforcement nut, as shown you will have to hold nut with finger to keep it from moving around on you.

4)



Straighten bracket, snug bolt to frame, and drill through where shown above. Be sure not to drill hole too low, as this will leave little or no steel on the pinch weld. Tighten both bolts as shown.

5)



At the 37 3/4" mark on the pinch weld, look at the frame rail and you see a large oval factory slot, install bolt through slot on FL 161 bracket, attach re-enforcement nut to bolt and place in frame slot as shown above, make sure re-enforcement nut is straddled over slot and does not fall into slot of vehicle frame.

6)



Straighten bracket as shown above, snug bolt to frame. Drill hole through pinch weld and bolt bracket to it. Be care full not to drill hole to low on pinch weld. Tighten bolts.

7)



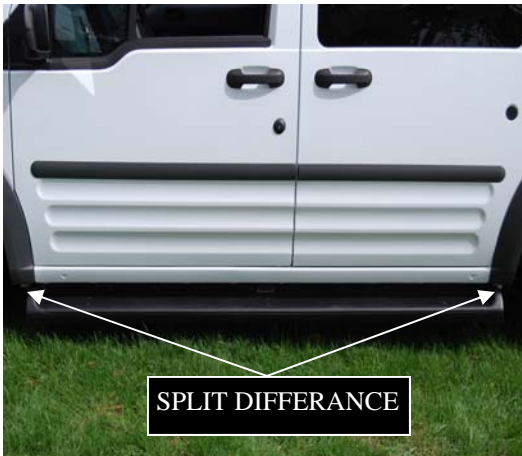
9) At the 66 1/4" look to the frame and you'll see a small slot to the front side of the leaf spring bracket. Put bolt through slot of bracket FL 162, then attach re-enforcement nut to bolt (use tapped hole closest to end of nut on this Bracket to be able to install nut in hole as shown above.

8)



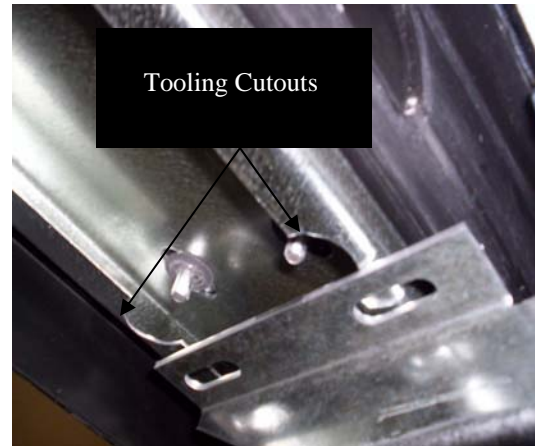
10) Straighten bracket as shown, snug bolt to frame. Drill through pinch weld and bolt bracket through the hole, again be sure not to drill hole to low. Tighten all bolts and nuts.

11



After brackets are installed sit the running board on brackets, you will have to split the difference between the wheel wells of vehicle from left to right

12



Once board is located left to right, be sure to look under board at the front bracket and make sure board is going to miss tooling cuts in bottom of steel channel as shown in Fig. #12 as screws have to hit steel. Move the board to the rear just far enough to miss holes.

13



Once board is located left to right and is straight you are ready to attach board to brackets. This vehicle being so low to the ground, you have to mark bracket slot locations rather than drill them on the vehicle. Fig.# 13 shows screws being run in with board on vehicle

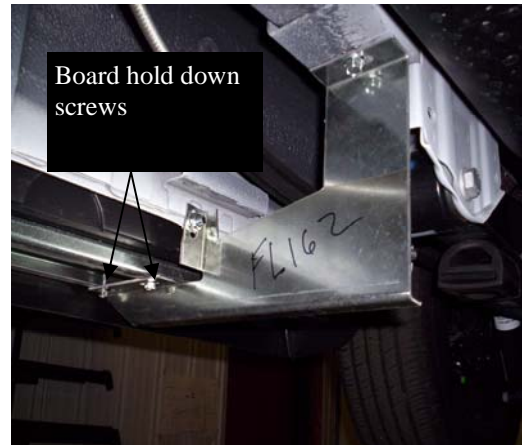


Fig. 14 shows screw locations .

Repeat steps for opposite side being sure to use the noted dimensions in step one. Dimensions are for general location of Brackets, actual location depends on hole locations in the vehicle frame.