

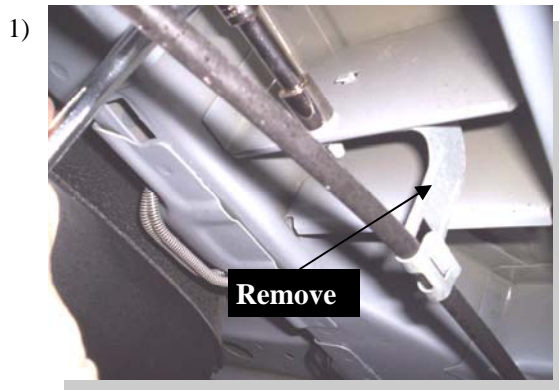
Note: Drilling into body is required.

Hardware shown on right.

Tools required:

- 3/8" nut driver
- Metric sockets
- 1/2" Standard socket
- 5/16" nut driver
- 1/2" wrench
- Drill

Painting your GlaSteps. To insure a proper paint finish, use a top quality auto paint system and follow the Manufacturer's instructions. Your GlaStep should be sanded and primed before painting.



On the driver side at 25" (23" on passenger side) back from wheel well, remove factory bracket holding the emergency brake cable.



Attach an FL125 with supplied 5/16 bolt and nut through hole where cable bracket was removed. Drill a 5/16" hole from the back side of the pinch weld to line up with the hole in the bracket and attach with 5/16" bolt and nut.



Remove the two forward bolts of the rear control arm holder. Do not discard, these will be used to attach rear bracket.

4)



Attach FL127D using bolts removed in step3. From back side of pinch weld drill 5/16" hole through pinch weld to line up with the hole in the bracket . Insert a 5/16" bolt and fasten with nut . Tighten all bolts.

5)



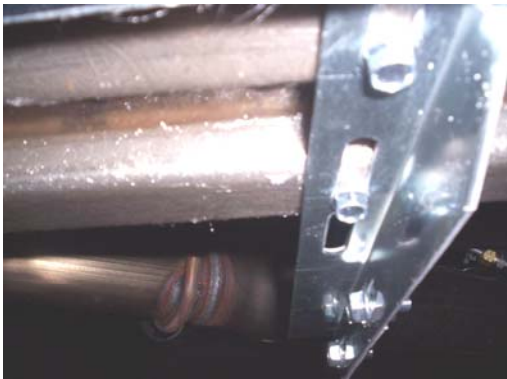
Attach one channel bracket with 5/16 bolts and nuts on each flat bracket. Snug but do not tighten.

6)



Attach foam tape to the top lip of the board where it meets up with the body. Attach step tread and logo also.

7)



Place the board on the brackets. Using a small jack to hold the board, position it up against the vehicle to achieve the best fit. Slide the channel brackets up to the bottom of the board and attach with self drilling screws. Tighten the bolts holding the channels..

8)



Make sure all hardware is tight. Repeat all steps for the passenger side. There will be no cable bracket to remove on the passenger side.