



## Nomadic Roof Top Tent Owner's Manual

Congratulations on your purchase of an Overland Vehicle Systems Nomadic Roof Top Tent. We strive to provide the ultimate camping experience for every camper. Your top quality, durable Roof Top Tent mounts directly to your roof rack or aftermarket roof bars and can be fully setup in just a few minutes. It can be left on your vehicle year-round.

Overland Vehicle Systems tents are made with the most durable materials that stand up to the most extreme conditions. High quality ripstop fabrics with superior ventilate coating provide excellent water and wind protection yet are more breathable than other tent brands on the market.

Most of your Overland Vehicle Systems Tent components have been fully assembled at the factory except for attaching the mounting tracks and the ladder to the base of the tent. Installation is composed of unpacking, attaching mounting tracks to the base of the tent, attaching the ladder, attaching the tent cover, and then mounting your Overland Vehicle Systems Tent onto your roof rack or aftermarket roof bars. All the tools and hardware required for installation are included.



### **WARNING**

Improper installation or use of your tent may result in serious injury or death. Follow these installation instructions carefully to ensure proper installation on your vehicle and safe use of your tent. Please check with your vehicle manufacturer for specified loading capacity of your roof rack. Not all factory roof racks, or aftermarket roof bars can safely accommodate tent models.

## Enclosed Hardware List

Guy ropes (x2)



Channel plates (x8)



M8x55mm Stainless steel hex bolts (x8)



M8 Nyloc hex nut (x8)



Stainless steel load bar plates (x4)



Stainless steel ladder hinge mounts (x2)



M6x35mm Stainless steel hex bolts (x2)



M6 Nyloc hex nut (x2)



M6x40mm Stainless steel hex bolts (x4)



M6 Nyloc hex nut (x4)



M6 Flat washers (x4)



M6x40mm Stainless steel hex bolts (x4)



M6 Nyloc hex nut (x4)



M6 Flat washers (x8)



Open end wrenches [10mm, 13mm] (x2)



Stakes (x2)



# Getting Started

This installation manual supports all current Overland Vehicle Systems tents. The installation process varies only slightly between certain models and is explained in detail within these pages.

1. Remove tent from box and place on a clean surface (a sturdy table is a good option). Undo all the hook and loop straps so that you can open the tent enough to unzip the door and remove the contents.



2. Locate the four mounting holes under the tent floor and lay the tent with this side facing upwards. See illustration for hole locations.



3. Release all the hook and loop securing straps and open the tent enough to access all the items stored inside the tent. Remove all these items and place on a table or safe clean space.



There are two mounting options for the orientation of your new Overland Vehicle Systems Tent. Either the tent will open so that the ladder extends off the back of your vehicle, "Rear Mounted," or the ladder extends off the side of your vehicle, "Side Mounted." Most of our customers choose to mount their tents with the ladder extending off the side of the vehicle, in "Side Mounted" orientation.

Either orientation works for larger vehicles, however, most sedans or smaller SUVs are better suited for the side mounted option.

**Benefits of a rear mounted tent (image 1)**

Fits into narrow camping spaces.

1. Trunk or tail gate area at the rear of your vehicle is accessible from inside the annex

- Note: if you opt to rear mount your tent, you will need to cut off any excess mounting rail material (see image 2)

**Benefits of a side mounted tent (image 3)**

1. Allows for bicycle racks and other tow hitch/bar accessories to be installed without interfering with your tent operation.

2. Closed tent width will fit inside the roof dimensions of most cars and SUV's. i.e. the tent base will not extend beyond the roofline of your vehicle when closed.

3. Typically, does not require cutting of the mounting tracks.



Image 1

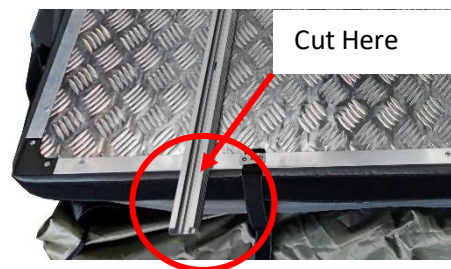


Image 2



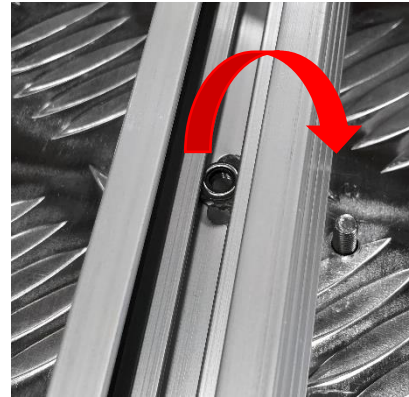
Image 3



- Slide 2 or 3 6mm Nyloc nuts into the mounting rails and align the mounting holes. Locate the mounting holes under the mattress and insert the M6 x 40mm bolts and flat washers from the inside out.



- Attach the mounting rails to the tent floor using the M6 (4pcs) bolts and tighten firmly.



## Installing the Ladder

- Turn over tent and locate the pre-drilled holes. Attach the ladder brackets as shown, using the M6 bolts, washers and Nyloc nuts.



- Attach the ladder to the brackets using the M6 bolts, flat washers and Nyloc nuts.



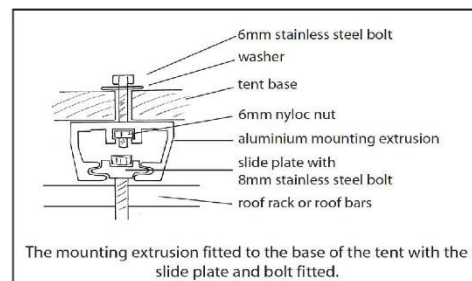
# Attachment to the roof rack

- It is the responsibility of the installer to ensure the roof rack has an adequate load rating to support the Nomadic roof top tent. The Nomadic tent weigh approximately
  - Nomadic 2: 150lbs
  - Nomadic 3: 161lbs
  - Nomadic 4: 172lbs
- Although 2 people can possibly lift the tent onto the vehicle, we recommend that four people be used due to the weight and size of the tent. This is to prevent injury or damage to the vehicle
- If mounting the tent to the rear opening, make sure that the tailgate operation does not interfere with the tent
- When lifting the tent onto the roof of the vehicle, make sure that mounting bolts do not contact the roof as this will cause damage to the vehicle. In some cases, the mounting bolts might need to be shortened to clear the roof.
- In some cases, the 6.5M soles will need to be drilled through roof bars to secure the tent.

The installation orientation of your Nomadic rooftop tent can be attached will depend on the type of roof rack/roof bars fitted to the vehicle.

Place the tent on top of your vehicle rack system, ensuring the mounting tracks are perpendicular to the bars they will mount to, and the tent is centered on the roof rack. Position the hinges so that the tent will open to the desired side.

1. Slide the 13mm bolts and channel sliders into the mounting tracks. Lift one side of the tent to position one set of bolts and channel sliders on the inner side of the roof rack bar and an additional set on the opposite side. Repeat on all four corners.



2. At each of the four corners where the rack bars and mounting tracks cross, using a steel mounting plate and nylock nuts to secure the bolts on either side of the bar. Tighten all eight bolts securely with the included nuts and wrench. Check all the mounting bolts and brackets periodically during use



3. After ensuring the tent is positioned correctly and all eight bolts are tightened securely, insert rubber end caps into the ends of the mounting tracks. This may require light taps from a hammer



## Tent Set Up

4. Undo the hook and loop strap that is holding the ladder compressed. Slide ladder out until complete ladder locks in place (as shown in image).



4. Pull down on the ladder to gain some leverage, until ladder is vertical, walk backwards away from the vehicle allowing the tent to unfold.



5. When tent is fully unfolded the end of the ladder should touch the ground.



6. Remove support bow from under mattress above ladder



7. Remove support bow from under mattress above ladder





8. Push bow away from the tent and insert ends into bow brackets on corners of tent base.



**Note: Although the tent is self-supporting, we recommend the use of guy ropes and pegs in case of potential gust of wind.**

## Installing Window Rods

9. Insert the 2 long window rods through the slit at the tent base (as shown in the picture). Please note that the long rods are inserted into the side windows and the short rods are inserted into the rear rain fly



8. Flex the support bow to the engage the hook end with the eyelet on the side windows or rain fly.



**Your Tent Installation is Complete!**

# Nomadic Annex Set Up

1. Remove the hook and loop strip insert that secures your cover to the tent. Place it somewhere safe as you will reinstall it when you remove your annex



2. Slightly raise the ladder off the ground to allow easier access to sail the track onto the base of the tent.



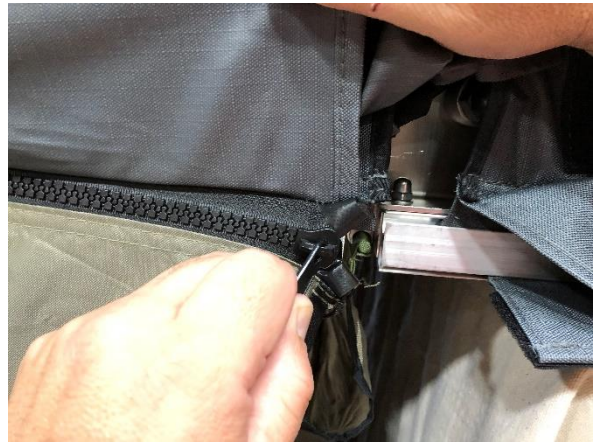
3. Slide material of the annex into the sail track as shown in the image



4. Attach the annex to the tent base using the attached zipper.



5. Continue to zip the annex all the way around of the tent base.



6. Secure the annex to the ground using the provided ground pegs



# Packing up your Nomadic Roof Top Tent

- Pack your Nomadic tent up in reverse order to the set up
- Reattach the elastic cords to the inside of the tent. This is to pull the sides of the tent inward, making it easier to pack up
- Reinstall the travel cover and secure the 2 straps.

## Roof Top Tent Care and Maintenance

Your Roof Top Tent is designed to be a durable companion on your adventures. In order to keep it performing at its best, we recommend some simple care and maintenance steps that will help prolong the life of your Roof Top Tent.

- Prior to each use, inspect your Roof Top Tent mounting hardware. If necessary, clean with a solution of mild detergent and water. Periodically lubricate the threads on your hardware with a light synthetic bicycle lubricant to maintain performance.
- Dry your Roof Top Tent thoroughly before you close it. If unable to properly dry your Roof Top Tent prior to closing, open it up and air dry it at your next opportunity. Failure to properly dry your tent out can lead to the growth of mold and mildew which can degrade the tent material, cause discoloration, and foul odor. Mold and mildew growth is not covered under your Roof Top Tent warranty.
- cover and machine wash gentle cycle with Woolite™ detergent. Hang dry, DO NOT TUMBLE DRY.
- To clean your Roof Top Tent use a mild detergent and warm water gently applied with a sponge. Rinse with a clean wet sponge and allow to thoroughly dry.
- fabric. Over time, UV rays can degrade tent fabric and water proof coatings. If your rain fly material begins to break down due to exposure and use, we suggest washing the fabric with mild detergent and water followed by a treatment of water repellent such as Nikwax Tent & Gear Solarproof Spray™. Consult your local outdoor store for other tent fabric care products and use as directed.

## Storage and Handling

- If mildew and or mold have begun to grow on your tent, we recommend cleaning the affected tent fabric by sponging on a solution of 1 cup Lysol™ mixed in 1 gallon of hot water and allow to dry. Next, prepare a solution of 1 cup lemon juice concentrate and 1 cup salt in 1 gallon of hot water. Sponge this solution directly into the affected areas to rinse out the Lysol solution. Allow to air dry completely. Taking these steps will stop the growth of the mildew and help eliminate odor, however it may not completely remove the stains.
- Avoid excessive sun exposure to your tent to prolong the life of the
- Proper storage of your Roof Top Tent when not in use will prolong the life of your tent. Ensure it is fully dry prior to storage and store in a cool dry location free from direct sunlight.
- Zippers should be pulled with even force and in gentle fashion. Never force a zipper open or closed as it may damage your zipper. Keep your zippers free from dust and dirt and periodically apply non-scented bees wax to the zipper teeth as lubrication. This will prolong the life of your zippers.
- Ladder should be wiped free of any dirt or dust prior to collapsing the tent. Periodically wipe down the aluminum telescoping side rails of the ladder with silicone spray and a cloth. DO NOT spray silicone spray directly on the ladder tread surfaces.
- Keep your mattress dry and free from dirt. Prior to closing your Roof Top Tent lift your mattress and ensure the underside is dry. Remove mattress and air dry if necessary. To clean mattress cover, remove
- Keep your mattress dry and free from dirt. Prior to closing your Roof Top Tent lift your mattress and ensure the underside is dry. Remove mattress and air dry if necessary. To clean mattress cover, remove cover and machine wash gentle cycle with Woolite™ detergent. Hang dry, DO NOT TUMBLE DRY.
- To clean your Roof Top Tent use a mild detergent and warm water gently applied with a sponge. Rinse with a clean wet sponge and allow to thoroughly dry.
- If mildew and or mold have begun to grow on your tent, we recommend cleaning the affected tent fabric by sponging on a solution of 1 cup Lysol™ mixed in 1 gallon of hot water and allow to dry. Next, prepare a solution of 1 cup lemon juice concentrate and 1 cup salt in 1 gallon of hot water. Sponge this solution directly into the affected areas to rinse out the Lysol solution. Allow to air dry completely. Taking these steps will stop the growth of the mildew and help eliminate odor, however it may not completely remove the stains.
- Avoid excessive sun exposure to your tent to prolong the life of the fabric. Over time, UV rays can degrade tent fabric and water proof coatings. If your rain fly material begins to break down due to exposure and use, we suggest washing the fabric with mild detergent and water followed by a treatment of water repellent such as Nikwax Tent & Gear Solarproof Spray™. Consult your local outdoor store for other tent fabric care products and use as directed.