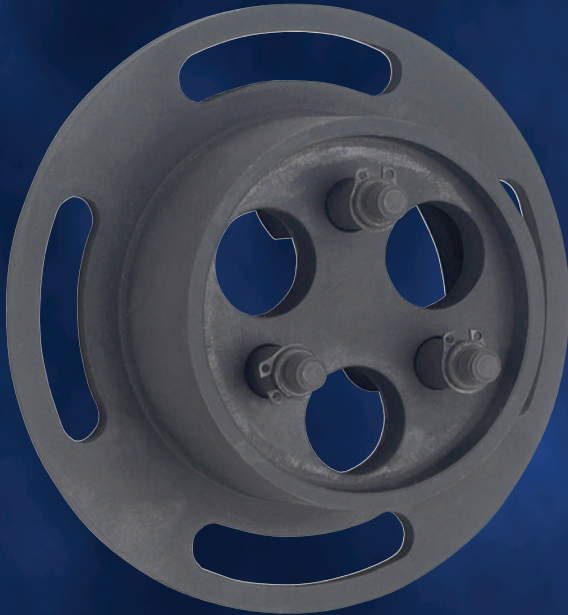
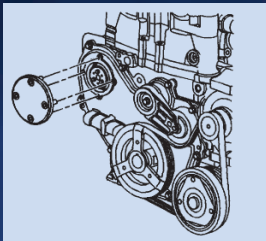


# GM Water Pump Holding Tool

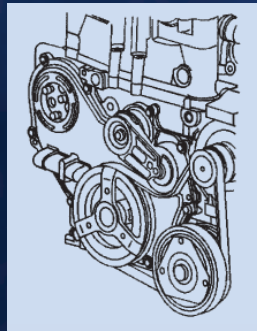
## 6616



6616



Removing access plate.



6616 installed.

- Holds timing chain in place so water pump can be removed for service.
- Special design allows easy installation regardless of timing chain orientation.
- Simply remove access plate from front cover and install the tool.
- Tool saves costly loss of timing on 2002–2008 GM 2.2L and 2.4L EcoTech motors found in Chevrolet, Oldsmobile, Pontiac, and Saturn platforms.

**No. 6616** – GM water pump holding tool.  
Wt., 10 oz.

Application GM EcoTech

### 2.2 Engine Code F

2002 – 2005 Chev Cavalier  
2005 – 2008 Chev Cobalt  
2003 – 2008 Chev Malibu  
2002 – 2004 Olds Alero  
2002 – 2005 Pontiac Sunfire  
2007 – 2008 Pontiac G5  
2002 – 2005 Pontiac Grand Am  
2002 – 2006 Saturn Vue  
2003 – 2007 Saturn Ion  
2000 – 2005 Saturn L series

### 2.4 Engine Code B

2005 – 2008 Chev Cobalt  
2005 – 2007 Chev HHR  
2004 – 2008 Chev Malibu  
2006 – 2008 Pontiac G6  
2006 – 2007 Pontiac Pursuit  
2006 – 2008 Pontiac Solstice  
2007 – 2008 Saturn Aura  
2006 – 2007 Saturn Ion  
2007 – 2008 Saturn Sky

**08-110** ©2008 All rights reserved. Because of ongoing product improvements, we reserve the right to change design, materials, and specifications without notice. Certain kits may require additional cables or adapters. Product shipped may differ from photo(s) shown.