

Power Train Lift

Max. Capacity: 1,650 lbs. (748 kg)





Description:


Use to remove, install, and transport a wide range of power train assemblies. Typical components include engine and transmission assemblies, gas tanks, drive axle assemblies, engine / transaxle assemblies, electric vehicle batteries, and more.

Explanation of Safety Signal Words

The safety signal word designates the degree or level of hazard seriousness.

 **DANGER:** Indicates an imminently hazardous situation which, if not avoided, will result in death or serious injury.

 **WARNING:** Indicates a potentially hazardous situation which, if not avoided, could result in death or serious injury.

 **CAUTION:** Indicates a potentially hazardous situation which, if not avoided, may result in minor or moderate injury.

CAUTION: Used without the safety alert symbol indicates a potentially hazardous situation which, if not avoided, may result in property damage.

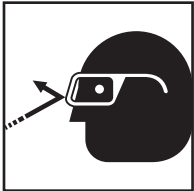
Safety Precautions



WARNING: To prevent personal injury or equipment damage,



- Study, understand, and follow all instructions before operating this device.
- Wear eye protection that meets OSHA and ANSI Z87.1 standards.
- No alterations shall be made to this product
- Before using the lift, inspect the unit for leaks, or damaged, loose, or missing parts. Immediately replace cut, frayed, damaged hoses, and electrical cords.
- Only use attachments and / or adapters supplied by the manufacturer.
- Adequately support the vehicle before starting repairs.
- Securely tighten the strap assembly around the component being lifted.
- Do not exceed the rated capacity.
- Do not lift or move a load that has a center of gravity extending beyond the wheels. Tipping can result in personal injury.
- Do not move the lift while the load is raised. Lower the load completely before moving or storing the load.
- Carefully and slowly move a load on an incline or around a corner. Tipping can result in personal injury.
- Use only on a hard, level surface.
- Do not stand under a load that is supported by the lift.
- The component must be securely held in place before it is removed from the lift.



Operating Instructions

Removal

1. Follow the vehicle manufacturer's recommended service procedure for removal of the component.
2. Position the power train lift under the vehicle. Connect the air hose to the pump.
3. Use the foot pedal to raise the lift to the load.
4. Adjust the wood blocks to fit the assembly, and tighten the nuts to secure the blocks in place.
5. Turn the adjusting screws to align the lift with the component. Raise the lift to the correct position.
6. Place the strap assembly around the component, and tighten the strap securely to the hook holes.
7. Remove any remaining bolts from the vehicle component.
8. Completely lower the power train lift using the foot pedal control.
9. Move the lift and load out from under the vehicle.

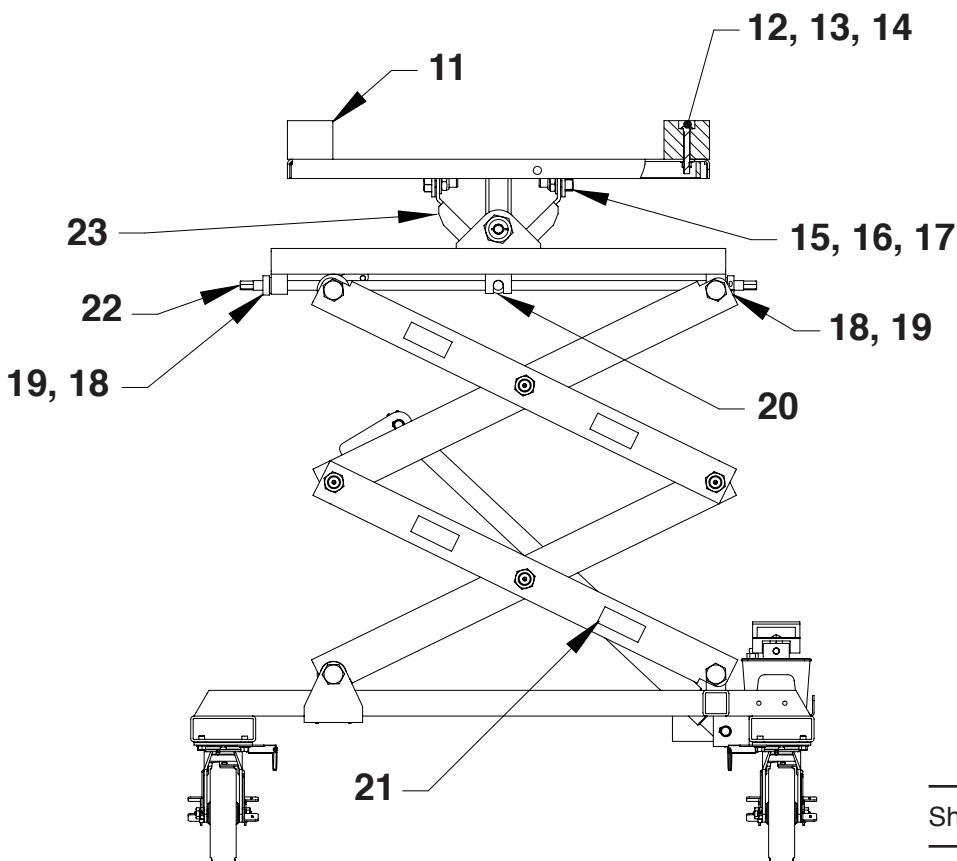
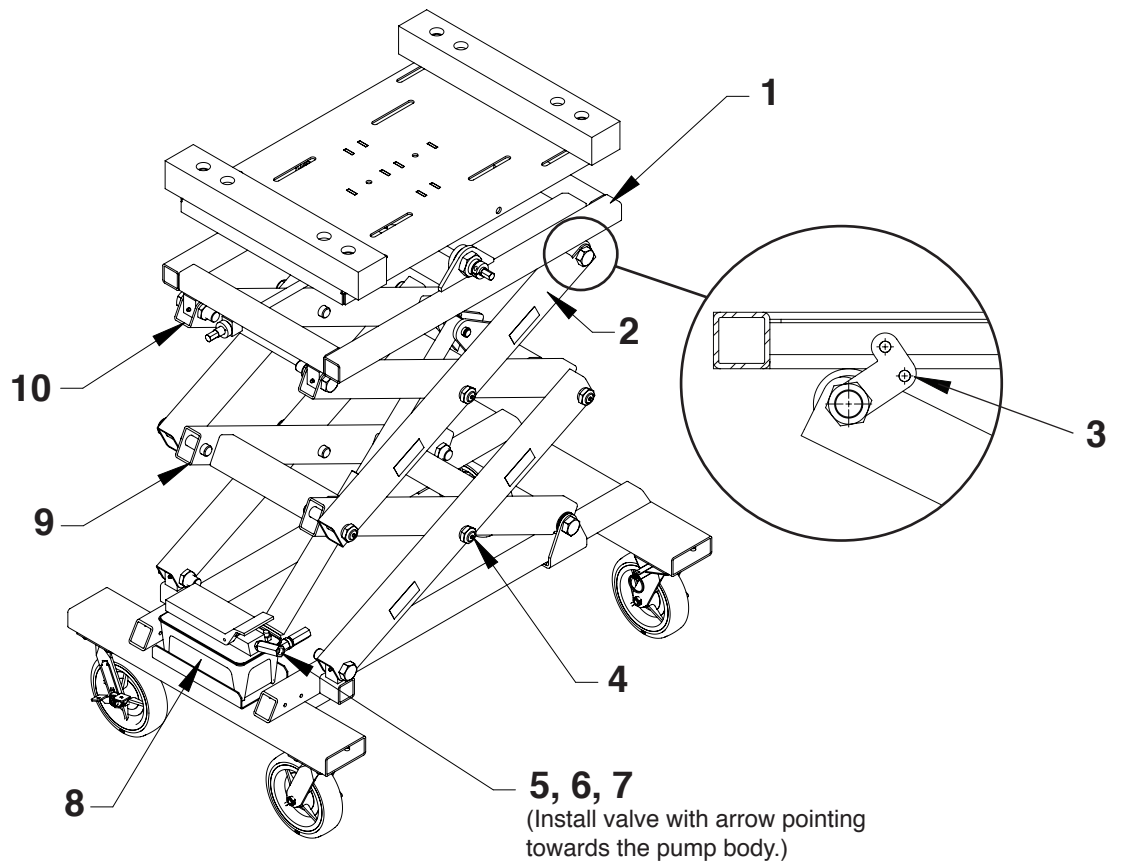
Installation

1. Position the power train lift under the chassis.
2. Raise the power train lift and turn the adjusting screws to align the component in the correct position.
3. Follow the vehicle manufacturer's recommended service procedure for installing the component.

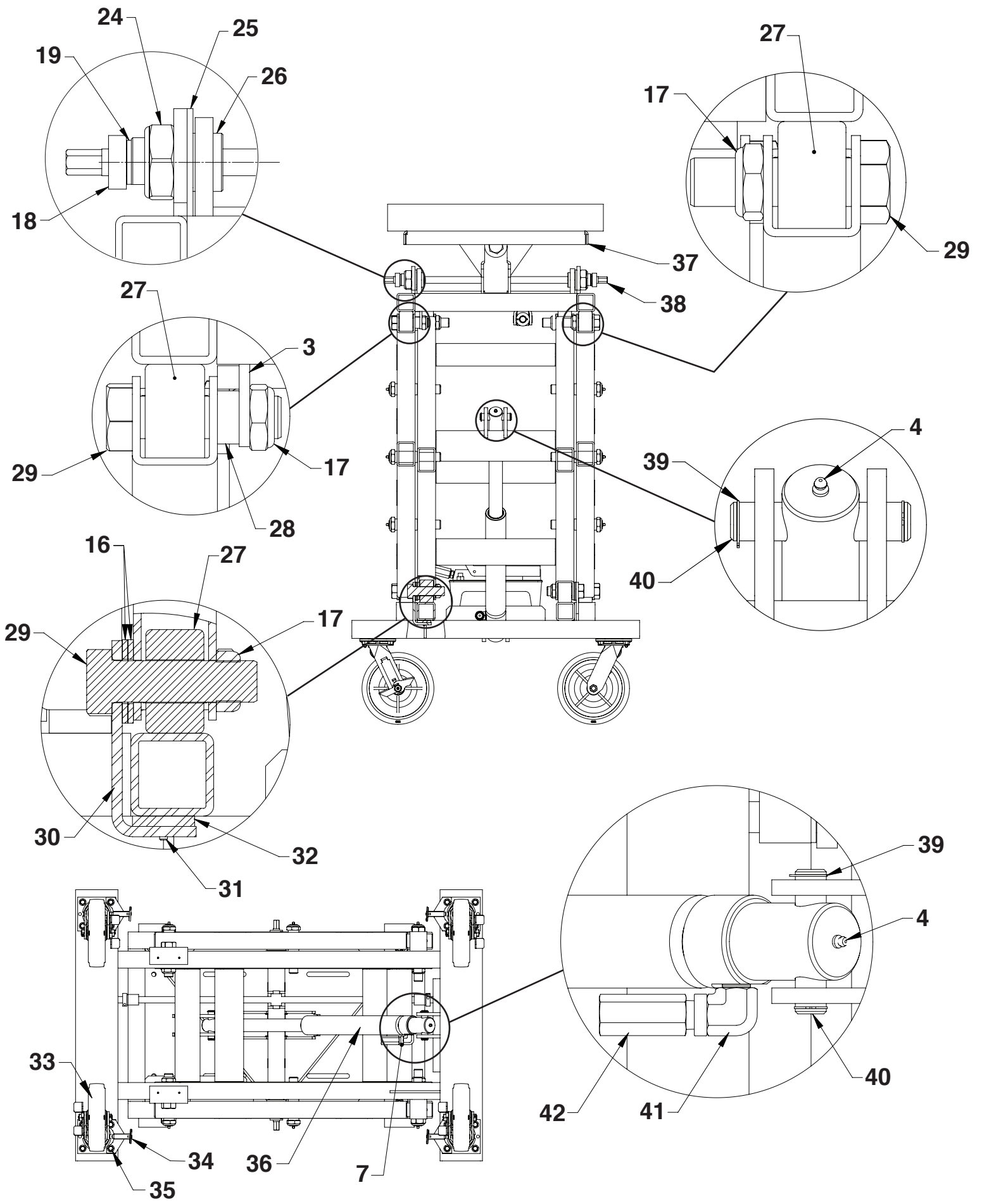
Maintenance

Use a good grade lubricant to regularly lubricate the pivot points, adjusting screws, and swivel casters.

Parts List



This document contains product parts lists and information regarding operation and maintenance. Items listed in the parts list have been carefully tested and selected by OTC. Therefore, use only OTC replacement parts.

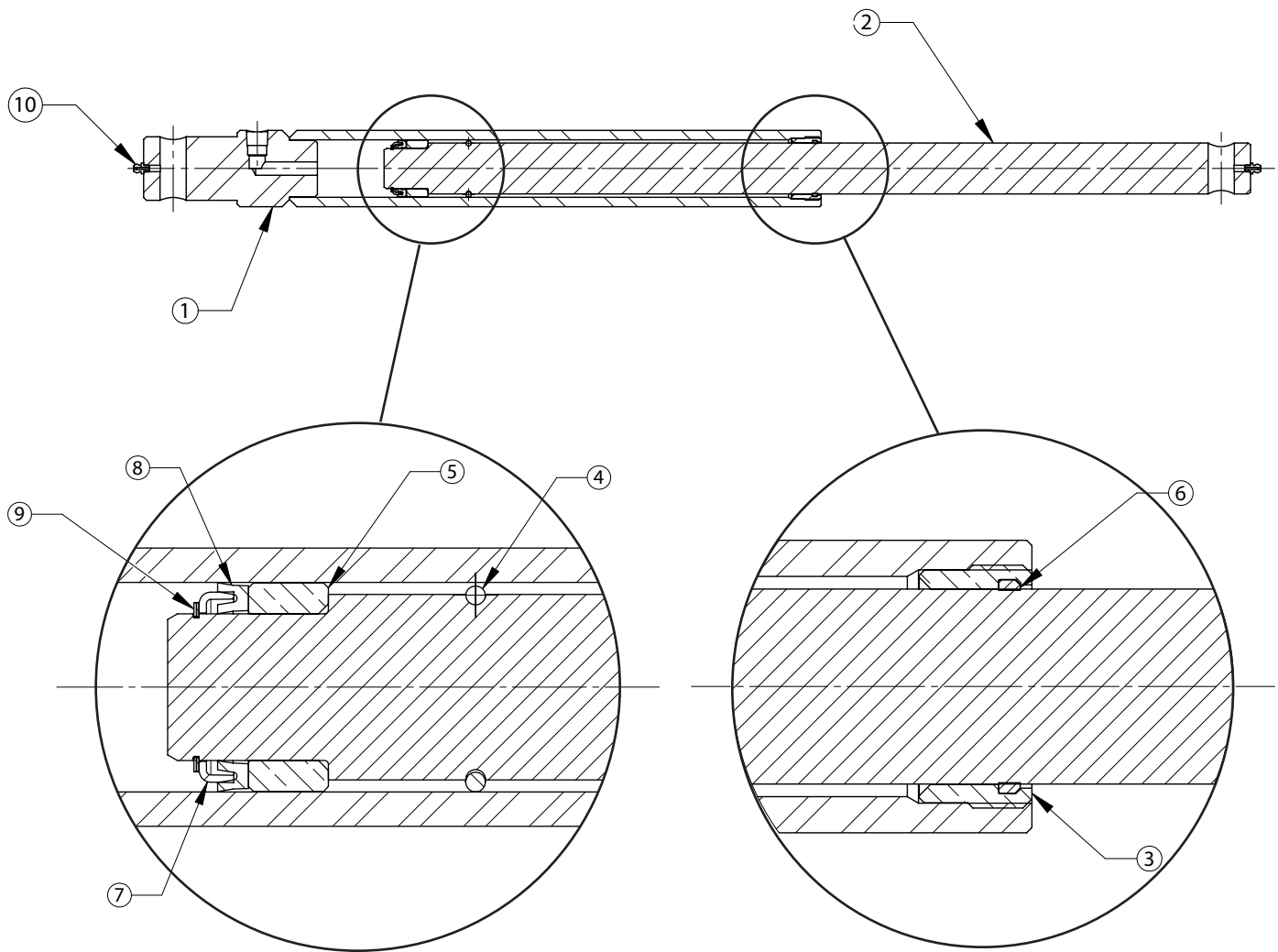


Parts List

Item No.	Qty.	Part No.	Description
1	1	564082	Table Base (for 5285)
	1	576775	Table Base (for 1066521-00-A)
2	4	564060	Frame Tube
3	1	564088	Retaining Plate
4	12	16696	Alemite Grease Fitting
5	1	566055	Inline Flow Regulator Valve (Install valve with arrow pointing towards the pump body.)
6	1	10673	Straight Fitting
7	1	563966	Hydraulic Hose
8	1	560111	Air Pump
9	1	564063	Riser Frame (for 5285)
	1	576774	Riser Frame (for 1066521-00-A)
10	1	564058	Rise Frame (for 5285)
	1	576773	Rise Frame (for 1066521-00-A)
15	2	564094	Hex Head Cap Screw
16	6	11253	Type "A" Washer
17	18	564076	Hex Locknut
18	4	526998	Locking Collar
20	2	523970	Trunnion
21	8	218297	Warning Decal
22	1	523964	Forcing Screw
23	1	564090	Tilt Table
26	2	564079	Bushing
27	4	579188	Roller
28	1	564084	Spacer
29	8	564092	Hex Head Cap Screw
36	1	565808	Hydraulic Cylinder
37	1	523969	Table
38	1	523966	Forcing Screw
41	1	564118	Elbow
42	1	564117	Velocity Fuse

Replacement Kit List

Item No.	Qty.	Description
565243 Hardware Kit		
19	4	Thrust Bearing Washer
24	2	Nylon Insert Locknut
25	2	Washer
565244 Keeper Plate Kit (for 5285)		
30	2	Keeper Plate
31	4	Screw (10-24 x 1/2)
32	2	Glide Strip
577249 Keeper Plate Kit (for 1066521-00-A)		
30	2	Keeper Plate
31	4	Screw (10-24 x 1/2)
32	2	Glide Strip
565247 Wood Block Kit		
11	2	Wood Block
12	4	Carriage Bolt
13	4	Washer
14	4	Hex Nut
579910 Cylinder Pin Hardware Kit		
39	4	Retaining Ring
40	2	Cylinder Pivot Pin
579912 Caster Kit		
33	1	Swivel Caster with Brake
34	1	Caster Swivel Lock
579913 Bolt Pack		
35	6	Serrated Flange Bolt (3/8"-16 X 3/4")



Cylinder Parts List

566057 Seal Replacement Kit

Item No.	Qty.	Part No.	Description
1	1	565801	Cylinder Weldment
2	1	565804	Rod
3	1	*	Retainer Nut
4	1	*	Retaining Ring
5	1	*	Cylinder Bushing
6	1	*	Wiper Rod
7	1	*	Slip Retainer
8	1	*	U-cup Packing (Piston Type)
9	1	*	External Retaining Ring
10	2	*	Alemite Grease Fitting

Item No.	Qty.	Description
3	1	Retainer Nut
4	1	Retaining Ring
5	1	Cylinder Bushing
6	1	Wiper Rod
7	1	Slip Retainer
8	1	U-cup Packing
9	1	External Retaining Ring
10	2	Alemite Grease Fitting

* Included in Seal Replacement Kit

Inspection and Maintenance



CAUTION: To prevent personal injury,

- Only qualified personnel shall perform inspections and repairs to this power train lift.
- Before each use, an approved inspector must inspect the power train lift for bends, cracks, dents, elongated holes, or missing hardware. If damage is found, discontinue use.
- Use only those repair parts called out in the parts list in this document. Items found in the parts list have been carefully tested and selected by OTC.

Inspection

Before each use, an approved inspector must inspect the power train lift for bends, cracks, dents, elongated holes, or missing hardware. If damage is found, discontinue use.

Maintenance

Periodically lubricate the jacking screws and wheel assemblies with lubricating oil or grease.

Repair

When repairing the power train lift, use only those repair parts called out in the parts list in this document. Items found in the parts list have been carefully tested and selected by OTC.

Disposal

At the end of the useful life of the power train lift, dispose of the components according to all state, federal, and local regulations.