

HANDLES HEAVY-DUTY TRANSMISSIONS UP TO 2,200 LBS



✓ INCLUDES 540231 EATON FULLER ROADRANGER TRANSMISSION ADAPTER

5019A LOW-LIFT TRANSMISSION JACK

- Low 8-1/4" height is perfect for aerodynamic trucks with low ground clearance. Special included mounting adapter fits popular Eaton® Fuller® RoadRanger® transmissions used on nearly all Class 7 and 8 heavy-duty trucks
- Mounting plate angle tilts 20° back, 15° forward, 12° side-to-side
- Swiveling pump handle fits in tight spaces and quickly raises lifting arm

Specifications

Capacity: 2,200 lbs

Length: 52"

Width: 32-1/2"

Max. height: 36-1/2"

Min. height: 8-1/4"

Weight: 330 lbs



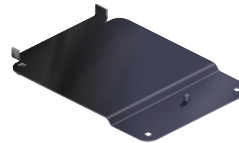
AVAILABLE ADAPTERS FOR 5019A



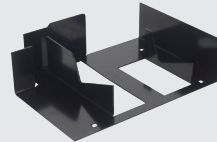
558382
Auxiliary
box adapter



561949
Light duty
transmission
adapters



528150
Eaton
lightning
adapter



543284
Roadranger
transmission. Fits
FRO-11210C to
FRO-18210C with
integrated cooler



49611
Eaton Fuller
Roadranger
auxiliary housing



553516
Differential mounting
adapter. Fits Eaton,
Fuller, Rockwell,
Meritor, Spicer,
International and
Mack differentials



540232
Mack transmission
mounting brackets.
Fits T200 series
transmissions



5091
HD spindle
adapter. Universal
design for faster
kingpin service

POWERTRAIN LIFTS



5285
1,650-LB POWERTRAIN LIFT

- Air/hydraulic operation with foot control pump
- Scissor design to access all 4 sides of powertrain



1595A
2,500-LB POWERTRAIN LIFT

- Air/hydraulic operation with foot control pump
- Scissor design to access all 4 sides of powertrain



5295
1,760-LB SPLIT TOP POWERTRAIN LIFT

- Sliding split-top helps separate powertrains, differentials, axles and more
- High ground clearance for floor crane access when collapsed
- Air/hydraulic lifting mechanism smoothly lifts and lowers components
- Large, tilting tabletop to access all sides of components
- Air/hydraulic operation with foot control pump



5130
1,000 LB DRIVELINE LIFT

- Includes 553516 differential adapter
- Pivoting pump handle to raise/lower from multiple positions
- For removal of differentials, light-duty transmissions, auxiliary boxes, drive shafts and more



1585A
1,250 LB POWERTRAIN LIFT

- Ideal for engine and transaxle service
- Moves easily around the shop with compact design and swivel casters
- Air/hydraulic operation

Lift Spec.	Capacity (lbs)	Table size	Tilt side/side	Tilt front/back	Min height	Max height	Caster size
5285	1,650	20" x 32"	15°	15°	31.5"	74.5"	8"
1595A	2,500	20" x 32"	15°	15°	29"	80"	8"
5295	1,760	36" x 42"	N/A	N/A	21.5"	70"	8"
5130	1,000	N/A	15°	15°	7"	30"	4"
1585A	1,250	20.5" x 30.5"	17°	22°	29.5"	68.5"	4"

TRANSMISSION JACKS



5019A 2,200 LB TRANSMISSION JACK

- Includes 540231 adapter for Eaton Fuller RoadRanger transmissions
- Pivoting pump handle to raise/lower from multiple positions



5078 2,000 LB HIGH-LIFT TRANSMISSION JACK

- Air/hydraulic operation with foot control pump
- Includes adapter for Allison 500 and 600-series transmissions



1793A 1,000 LB HIGH-LIFT TRANSMISSION JACK

- Universal mounting head and adjustable brackets for easy transmission alignment
- Foot-operated pump to control height when raising or lowering transmissions



1522A 2,000 LB LOW-LIFT TRANSMISSION JACK

- Includes 220492 adapter for Eaton Fuller RoadRanger transmissions
- Pump handle rotates 360° to raise/lower from multiple positions



1521A 1,000 LB LOW LIFT TRANSMISSION JACK

- Universal mounting head and adjustable brackets for easy transmission alignment
- Pump handle rotates 360° to raise/lower from multiple positions



1794A AIR-ASSIST 1,000 LB HIGH LIFT TRANSMISSION JACK

- Universal mounting head and adjustable brackets for easy transmission alignment
- Air-assist for faster raising via foot pedal

Lift Spec.	Capacity (lbs)	Min height	Max height	Tilt, forward	Tilt, backward	Tilt, side/side
5019A	2,200	8.25"	36.5"	15°	20°	12°
5078	2,000	41.5"	65"	50°	38°	14°
1793A	1,000	35"	71.625"	24°	19°	20°
1522A	2,000	6.875"	35.25"	24°	18°	11°
1521A	1,000	7.5"	29.75"	67°	17°	30°
1794A	1,000	37.625"	76.5"	42°	46°	12°
5237	1,000	34.5"	75"	50°	20°	10°
1728	1,000	34.5"	72"	40°	20°	10°

TRANSMISSION JACKS





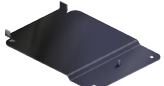
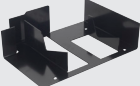


5237 1,000 HIGH LIFT TRANSMISSION JACK

- Universal mounting head and adjustable brackets for easy transmission alignment
- Folding foot pedal for precise control for raising, lowering and positioning
- 34-1/2" min height, 75" max height
- Tilts 50° forward, 20° backward and 10° side-to-side


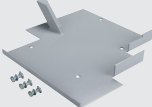







1728 AIR-ASSIST 1,000 LB HIGH LIFT TRANSMISSION JACK

- Air-assist with foot pedal control raises components quickly
- Four ratcheting brackets fit a wide range of transmissions
- 34-1/2" min height, 72" max height
- Tilts 40° forward, 20* backward and 10* side-to-side

COMPATIBILITY ADAPTER	POWERTRAIN LIFTS				DRIVELINE	LOW-LIFT TRANS JACKS			HIGH-LIFT TRANS JACKS				
	5285	1595A	5295	1585A	5130	5019A	1522A	1521A	5078	1793A	1794A	1728	5237
 558382 Auxiliary box adapter					Yes	Yes	Yes		Yes				
 561949 Light duty transmission adapters					Yes	Yes	Yes		Yes				
 528150 Eaton lightning adapter						Yes							
 543284 Roadranger transmission						Yes							
 49611 Eaton Fuller Roadranger auxiliary housing						yes							
 553516 Differential mounting adapter					Yes, included with lift purchase	Yes	Yes		Yes				



COMPATIBILITY ADAPTER	POWERTRAIN LIFTS				DRIVELINE	LOW-LIFT TRANS JACKS			HIGH-LIFT TRANS JACKS				
Adapters	5285	1595A	5295	1585A	5130	5019A	1522A	1521A	5078	1793A	1794A	1728	5237
 <p>314729 Allison 5/0600 series adapter</p>									Yes, included with lift purchase				
 <p>540231 Eaton Fuller Roadranger transmission adapter</p>						Yes, included with lift purchase							
 <p>540232 Mack transmission mounting brackets</p>						yes							
 <p>5091 HD spindle adapter</p>					Yes	Yes	Yes						
 <p>1870 Universal transmission adapter</p>									Yes	Yes		Yes	
 <p>223196 Transmission jack mounting adapter set</p>									Yes	Yes	Yes	Yes	
 <p>1758 Fuel tank handler</p>	Yes	Yes	Yes	Yes					Yes	Yes	Yes	Yes	