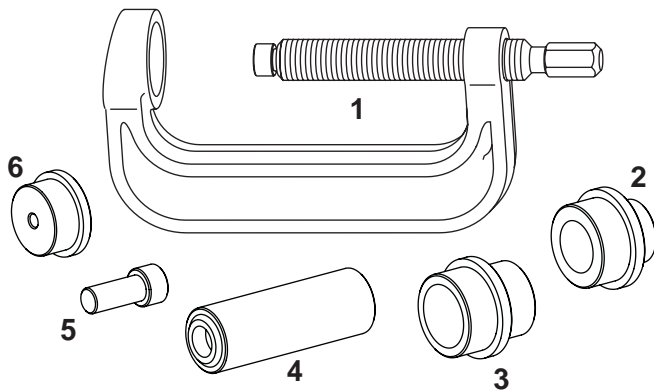
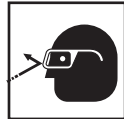


Wheel Stud Service Kit

Parts List



Item No.	Part No.	Qty.	Description
1	543206	1	C-frame / Forcing Screw Assembly (consists of Nos. 521808-1 C-frame; 523622 thumb screw; 37703 forcing screw; 14472 steel ball; 10273 o-ring; and 542509 plug)
2	542715	1	Removing Adapter (33.9 mm ID)
3	542714	1	Removing Adapter (40.8 mm ID)
4	563608	1	Receiving Cup
5	541229	1	Removing Pin
6	563607	1	Installing Adapter
	35448	1	Lube Packet (for use on threads; not shown)



Safety Precautions



CAUTION : To prevent personal injury when using these tools,

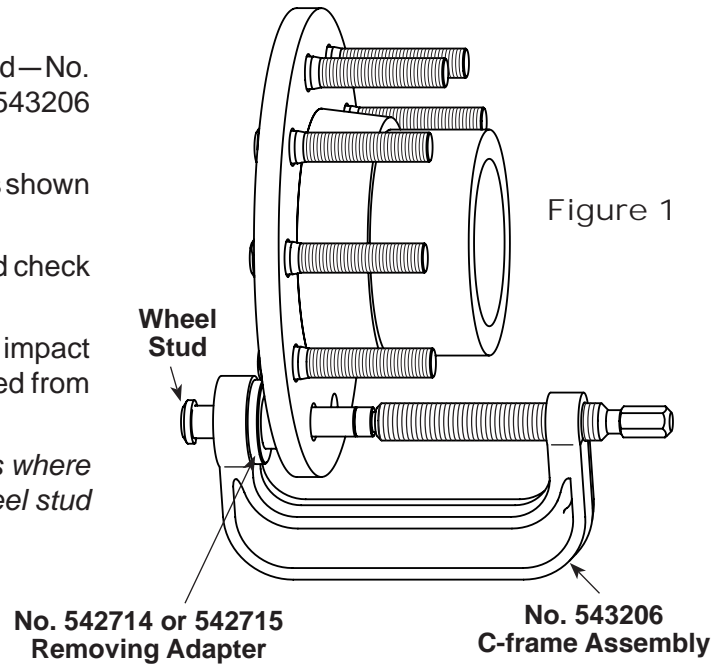
- Study, understand, and follow all instructions and safety precautions related to this tool kit. If the operator cannot read these instructions, safety precautions and instructions must be discussed in the operator's native language.
- Wear eye protection that meets ANSI Z87.1 and OSHA standards.
- Before performing repairs, block the vehicle wheels to prevent movement of the vehicle.
- Check the final alignment of tooling and components before using the C-frame to exert pressure.

Parts List & Operating Instructions

Wheel Stud Removal

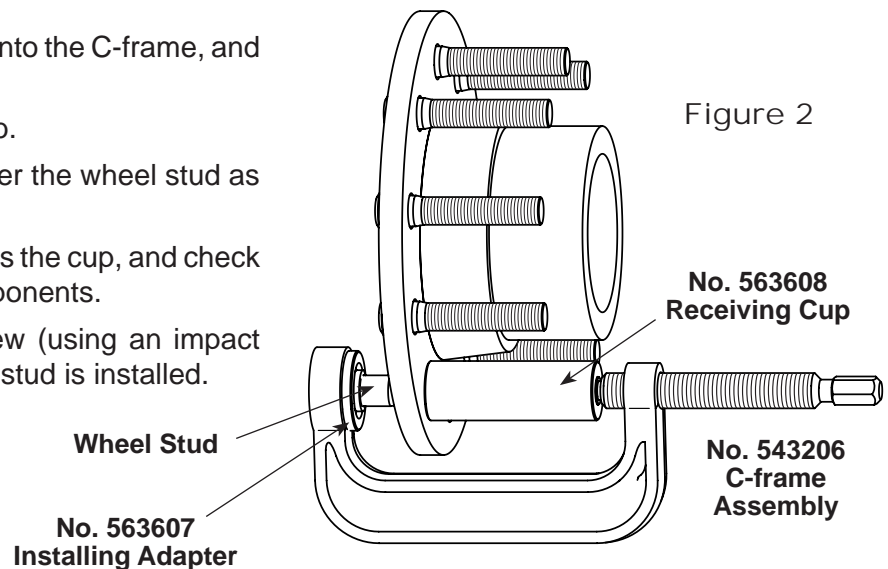
1. Determine which removing adapter fits the wheel stud—No. 542714 or 542715. Insert the adapter into No. 543206 C-frame.
2. Position the C-frame and adapter on a wheel stud as shown in Figure 1.
3. Tighten the forcing screw until it meets the stud, and check the alignment of all tooling and components.
4. Continue tightening the forcing screw (using an impact wrench if necessary) until the wheel stud is removed from the hub.

Note: Use No. 541229 Removing Pin for applications where the forcing screw is not long enough to push the wheel stud all the way out of the hub.



Wheel Stud Installation

1. Insert No. 563607 Installing Adapter into the C-frame, and place the wheel stud in the adapter.
2. Insert the wheel stud through the hub.
3. Place No. 563608 Receiving Cup over the wheel stud as shown.
4. Tighten the forcing screw until it meets the cup, and check the alignment of all tooling and components.
3. Continue tightening the forcing screw (using an impact wrench if necessary) until the wheel stud is installed.



Maintenance

Use the lubricant supplied with this kit to frequently clean and lubricate the forcing screw, from threads to tip, to ensure correct operation of the C-frame assembly.