



Can I access the Google Play store on my Encore / Evolve?

- a. No, OTC diagnostic tools cannot access the Google Play store

Can I pair my Encore/Evolve with a TPR tool?

- a. Yes, both tools pair with the OTC 3834T. Both tools feature WiFi and Bluetooth.

How often are software updates available?

- a. Generally, software updates are available about once every quarter. If we have software patches or major upgrades, these may be more frequently or less often.

What is in a software update?

- a. Our updates include coverage and user interface enhancements. Most updates will include additional vehicle coverage, software patches and confirmed fixes. They'll also include more special tests like key fob relearn, brake and battery reset tests, ABS and Airbag tests and more.

How do I know if I have the latest software on my tool?

- a. To check your software version, select Settings from the home screen, then Software Update. If an update is available, your tool will automatically start downloading the update if you are connected to WiFi.

How do I install software updates?

- a. Once downloaded, your tool will ask if you want to install the update. Make sure your tool has at least 50% battery life AND is plugged in. Follow the on-screen prompts and your tool will install the updates

How long will it take to install a software update?

- a. Software updates can take up to 20 minutes to install. During this time your tool will not be operational, so we recommend doing updates at the end of the day or during a lunch break. Once the update is installed, the tool will re-boot with new coverage, tests and features.

Will the Encore / Evolve scan OBD I vehicles?

- a. Yes, both tools include OBD I coverage. A separate adapter kit is available for multiple vehicles. The part number is 3895-100 and includes the below adapters. You will also need part number 3825-35 12V DC power cable to use OBD I cables with your Evolve. This is needed to provide power to the VCI to communicate with your Evolve. With the Encore, internal batteries will allow OBD I operation but for prolonged use we recommend using the 12V power supply to avoid draining your scan tool's battery.

3825-59 Chrysler CCD cable

3825-16 Ford ABS (older vehicles) cable

3825-12 Ford EEC cable

3825-28 BMW cable

3825-25 38 pin Mercedes cable

3825-93 Kia cable

3825-24 Nissan cable

3825-19 Mitsubishi/Chrysler cable

3825-17 Toyota DLC 2 cable

3825-18 Toyota DCL 1 cable

What other OBD1 cables are available for the Encore / Evolve?

- 3825-09 GM 12-pin adapter
- 3825-10 Chrysler OBD I adapter
- 3825-11 ECS ABS (Mazda electronic control system) adapter
- 3825-13 Geo-Isuzu adapter
- 3825-14 MECS engine adapter
- 3825-15 Universal 9-pin adapter
- 3825-20 Nissan 1 adapter
- 3825-21 Subaru OBD I 'Y' adapter
- 3825-22 Mitsubishi / Hyundai adapter
- 3825-23 Honda adapter
- 3825-27 VW 4-pin adapter
- 3825-29 HD 6-pin adapter
- 3825-30 HD 9-pin adapter
- 3825-31 8' extension cable (VCI to OBD II cable)
- 3825-34 Chrysler 3 adapter
- 3825-35 6' 12V power cable
- 3895-10 Nissan 2 adapter

How do I install an application on my Encore / Evolve?

- a. The OTC diagnostics platform runs as a native app on the Android system. Because of this, adding apps that were not on the tool from the factory may interfere with the diagnostics program. It is recommended to not add apps to either tool.

Why does the screen show an electrical plug and battery when I try to turn on my tool?

- a. Your tool is in power-saving mode and must be charged before using it to scan a vehicle. The tool maintains a slight charge in power-saving mode to keep all your settings intact when the battery is low, including screen brightness, date/time, vehicle history and more.

Why is my VCI not updating?

- a. To update your VCI, use the special VCI cable, included with your Evolve, to plug into the port on the Evolve labeled VCI. Then plug the AC charger directly into the VCI to begin updates. The VCI will not update when plugged into a vehicle.

Why do I get an "Authentication Failed" error when trying to connect to my Wi-Fi network?

- a. This error indicates you have entered an incorrect password for the network. Try entering your password again and select the 'Show password' box to view your password as you type.

Why can't I register my tool?

- a. If you are receiving an 'Internet sync required' message while trying to register your tool:
 - i. Verify your WiFi connection is active and connected to the Internet
 - ii. Ensure the tool has the correct date and time. You can change date and time in the settings section found in the top right drop-down menu
- b. If you see a 'WiFi is not enabled' message:
 - i. Double-check that your WiFi is turned on and you are connected to the Internet. You can turn on WiFi, Bluetooth and more in the to right drop-down menu
- c. If the tool displays 'Oops, we cannot activate your warranty,' review and confirm that all entered information is correct and all fields are filled out. Some common issues that will prevent the tool from being registered are:

Email address not entered or incorrect. Enter your full email address to proceed. This is required to provide you with important tool information and warranty service, if necessary.

Phone number is more than 10 characters. Your phone number should not include the 1 in front of the area code and must be exactly 10 numbers

State / Province spelled incorrectly or the incorrect abbreviation is used. Confirm correct spelling or abbreviation to continue.

Country entered incorrectly. Enter either USA or Canada as your country to continue. The country may be spelled incorrectly or the incorrect abbreviation is used. Confirm correct spelling or abbreviation to continue.

Special characters are used. Special characters are only accepted in your email address. Remove all special characters other than the @ I your email address to continue.

If all of the above is correct and you still cannot register your tool, try a different WiFi network such as at home or in a restaurant or coffee shop. Some WiFi network security settings will prevent the Encore or Evolve from completing the registration process.

Can I project my screen onto a TV or external monitor?

- a. Yes, depending on the tool. The Evolve has an HDMI out port and can be plugged directly into an external TV or monitor. The Encore can be accessed remotely from a computer via the QuickSupport TeamViewer application. QuickSupport TeamViewer can be accessed by selecting the app menu on the right of the tool's home screen and then tapping on the QuickSupport icon. The tablet's screen can then be shown on a TV or monitor.

Encore Update Process

It is highly recommended to update the scan tool before use. This ensures the best user experience and vehicle coverage available. The update process is automatic; however it is based on preconditions being met. Below identifies these simple conditions.

Q. When can the Encore be updated?

A. The Encore scan tool can be updated when in Trial or Demo Mode as well as when registered.

Q. What conditions are required to DOWNLOAD an update?

A. The Encore scan tool must be turned on and connected to the Internet.

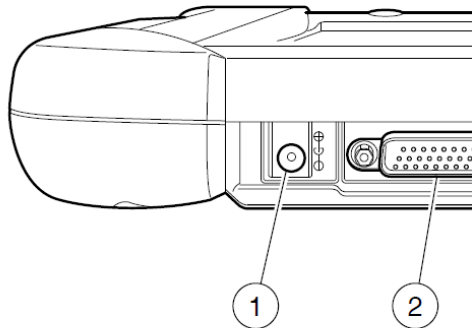
- No external power required to download
- No minimum battery life required to download
- There is an indicator in the upper left corner of the screen illustrating a download is in progress.

Once the download is complete you will be prompted to install the update. External power is not required to download the update, but is required to install. (See “What conditions are required to Install an update?” below).

Q. What conditions are required to INSTALL an update?

A. The following conditions are required to INSTALL a downloaded update:

1. Encore scan tool must be connected to the AC Power supply or the 12 volt power adapter connected to the Power Port. Encore will NOT install an update when connected to power via the DLC cable port. (See Figure A)



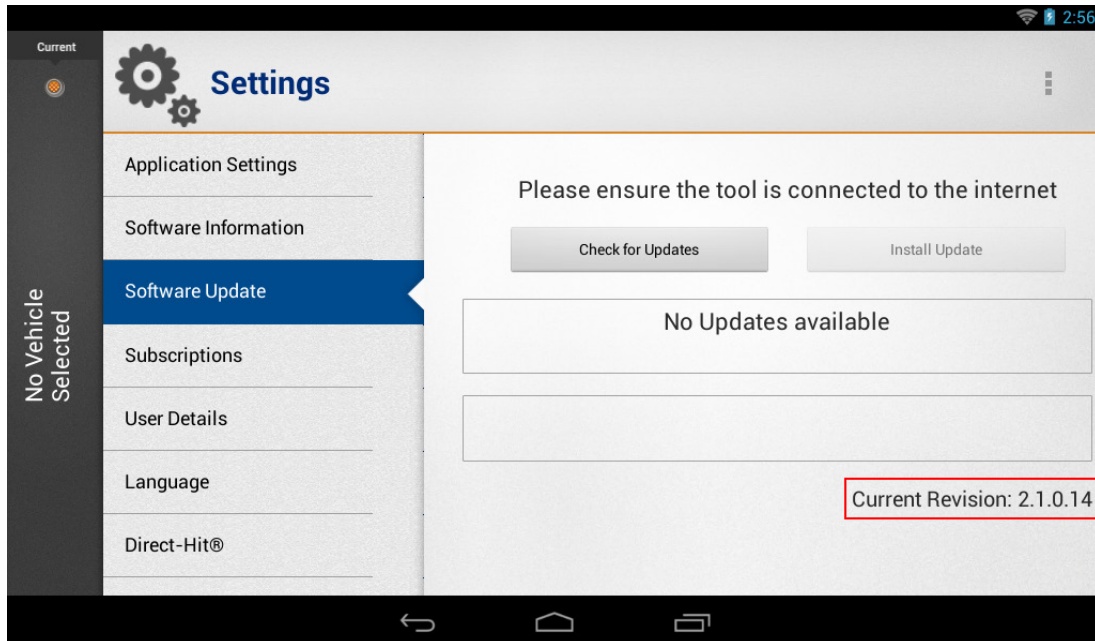
1. Power port
2. DLC cable port

Figure A

2. The Encore internal battery power must exceed 50%.

Q. How do I know the current revision of Encore software?

A. From the Encore main menu screen select Service & Settings > Software Update > see Current Revision number in the lower right corner of the screen.



NOTE: User selectable “Check for Updates” and “Install Updates” functions are available as shown. The Automatic background download is always active when connected to the internet.