

INTRODUCING

# Pegisys™



## Diagnostic Productivity Unleashed!

Diagnostic Information  
At the Fender™

SpeedScroll™ and  
Touch Screen controls

J2534 Reprogramming  
Capability

Wireless Vehicle  
Communications

Direct-Hit Technician™  
Power By Identifix®

Continuous Software  
Updates



# Providing Information Bandwidth At the Fender™

Audio & Video

Touch Screen Selection

Speed Scroll™ Control

High Speed Scope

1980-2007 Coverage

Information At the Fender™

Internet Connectivity

Wireless Vehicle Connection



## Diagnose and Repair Vehicles Faster than Ever Before!

You make money At the Fender™. And staying there to get relevant timely diagnostics keeps you productive. Meet Pegisys—the most advanced hand-held aftermarket diagnostic tool available—it's designed to give you more freedom to work productively. Our exclusive AirBridge™ Wireless Technology means you can now be completely untethered from the vehicle (even when it's up on the lift), and have immediate Internet access\* to real time web-enabled diagnostic assets. . . OTC Direct-Hit Technician™ on-line diagnostic information for Pegisys™.

Talk about coverage and features! Pegisys provides over 27 years of vehicle coverage (1980 – 2007) for 44 different vehicle makes from over 25 different manufacturers. It comes preloaded with expanded Scan (Pathfinder™) and Scope (InfoTech™) diagnostics, Repair-Trac™ Tech Tips, Automated System Test™, includes large screen touch control, SpeedScroll™ Thumb pads, built-in 2-channel scope, audio & video capability and so much more.

Bottom line? Pegisys unleashes your potential to work smarter and faster at the fender—that's good for the shop and good for you. Pegisys is a diagnostic freedom productivity machine. And it's from OTC, the One Tool Company professional technicians trust.

\* Requires the shop to have a wireless Internet network. (See page 8 for wireless solutions.)



Extensive Vehicle Coverage (1980 -2007)

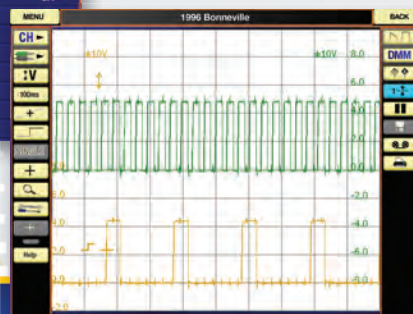
Exclusive Diagnostic Tests Saves Time

Code	Description	Current Codes
C0039-00	Left Front Wheel Speed Sensor Circuit	CURRENT CODES
C0040-00	Right Front Wheel Speed Sensor Circuit	CURRENT CODES
C0055-00	Rear Wheel Speed Sensor Circuit	CURRENT CODES
C0201-00	Open Or Shorted Master Cylinder Pressure Sensor	CURRENT CODES
C0202-00	Master Cylinder Pressure Sensor Performance	CURRENT CODES
C0203-00	Master Cylinder Pressure Sensor Offset Malfunction	CURRENT CODES
C0204-00	Master Cylinder Pressure Sensor Gain Malfunction	CURRENT CODES
C0205-00	Open Or Shorted Steering Wheel Angle Signal	CURRENT CODES
C0206-00	Steering Wheel Angle Sensor Performance	CURRENT CODES
C0207-00	Steering Wheel Angle Sensor Track Malfunction	CURRENT CODES
C0208-00	Steering Wheel Angle Sensor Offset Malfunction	CURRENT CODES
C0209-00	Open Or Shorted YAW Rate Sensor	CURRENT CODES
C0305-00	Left Front Wheel Speed Sensor Circuit	History Codes
C0304-00	Right Front Wheel Speed Sensor Circuit	History Codes
C0305-00	Rear Wheel Speed Sensor Circuit	History Codes
C0201-00	Open Or Shorted Master Cylinder Pressure Sensor	History Codes



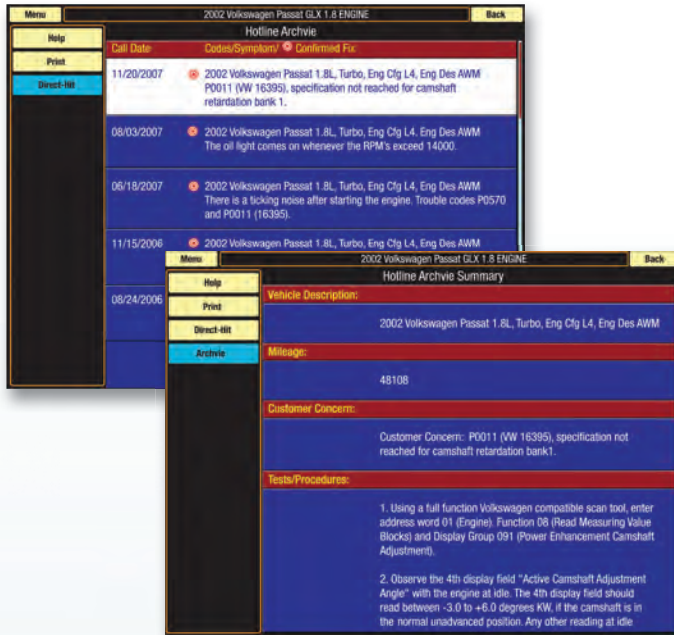
Interactive Data Stream Information

High-Speed 2-Channel Scope



## Information At the Fender™

OTC Direct-Hit Technician™, Powered by Identifix® is an exciting new option to help you find fixes even faster with Identifix's unique, experience-based diagnostic information At the Fender™ on OTC's Pegisys diagnostic tool.



QUICK FIXES		
Repair-Tracs	X	X
Hotline Archives™	X	X
Posted Fixes	X	X
NHTSA Recalls	X	X
Factory TSBs	X	X
OBD-II Code Data	X	X
Identifix Articles	X	X
REPAIR INFO		
Wiring Diagram Groups	X	X
Component Locations	X	X
Specifications	X	X
ESTIMATING INFO		
MOTOR Parts & Labor Guide		X
CHILTON Labor Guide		X
Preventive Maintenance Plan		X
Maintenance Schedules		X
Reliability Report		X
SUBSCRIPTION LICENSE		
	Single user license – Direct-Hit Technician Information only available on the Pegisys Diagnostic System (no separate direct website access)	Single Shop license that provides up to 4 usernames and passwords for shop personnel

## AirBridge™ Untethered Diagnostics

Pegisys AirBridge™ Wireless Technology features high speed WiFi 802.11b/g mini cards, allowing the Vehicle Communications Interface (VCI) to link wirelessly to Pegisys. The technician can now inspect the vehicle's hard-to-reach computer-controlled components without being tethered to a conventional scan tool cable. AirBridge™ wireless connectivity also means you can access the internet right from the tool!



## J2534 Reprogramming Capability

Pegisys Vehicle Communications Interface (VCI) hardware is J2534-1 and J2534-2 compliant. What does this mean? The Society of Automotive Engineers (SAE) J2534-1 standard applies for all **emissions-related systems** on 2004 and newer vehicles. The California Air Resources Board (ARB) and the U.S. Environmental Protection Agency (EPA) have both passed legislation mandating vehicle manufacturers comply with the standard. SAE J2534-2 standard applies to **vehicles older than 2004 and non-emissions systems**.

For example, a device compliant to the J2534-2 is required if you want to reprogram all the supported GM controllers and those vehicle older than 2004.

The Pegisys tool and VCI provide two tools in one – a high end diagnostic tool with wireless to the car and Internet capability and a J2534 compliant device for vehicle reprogramming. OTC has stood for value over 85 years and Pegisys delivers!

**NOTE:** The optional Pegisys J2534 software package will be available soon.

## Easy to Use—Intuitive Tech-Friendly Graphics

Pegisys™ features a truly innovative Graphical User Interface (GUI). Combined with Fast Touch screen control and the SpeedScroll™ keypad, the tool delivers the fastest access to information in the industry.

- SpeedScroll™ rotational controls allow you to quickly and efficiently scroll through menus from the left side and independently manipulate data from the right side. Scroll through long data lists fast – even when using gloves.
- The screen itself is also a navigation method. The touch screen and the unique graphic user interface allow you to use your finger, or the included stylus, to navigate through menus and other diagnostic functions. It's that simple on the 8.4 inch SVGA screen.



## Built for the Shop Environment

Shop-tough, the Pegisys tool is engineered inside and out to work the way a Technician needs it.

- Made of super-resilient ABS plastic—like that found in football helmets and car bumper extensions.
- Resilient rubber is molded in for maximum protection on corners and edges.
- Even the hard drive is mounted in a shock resistant rubber gasket to protect it for a rough service environment.

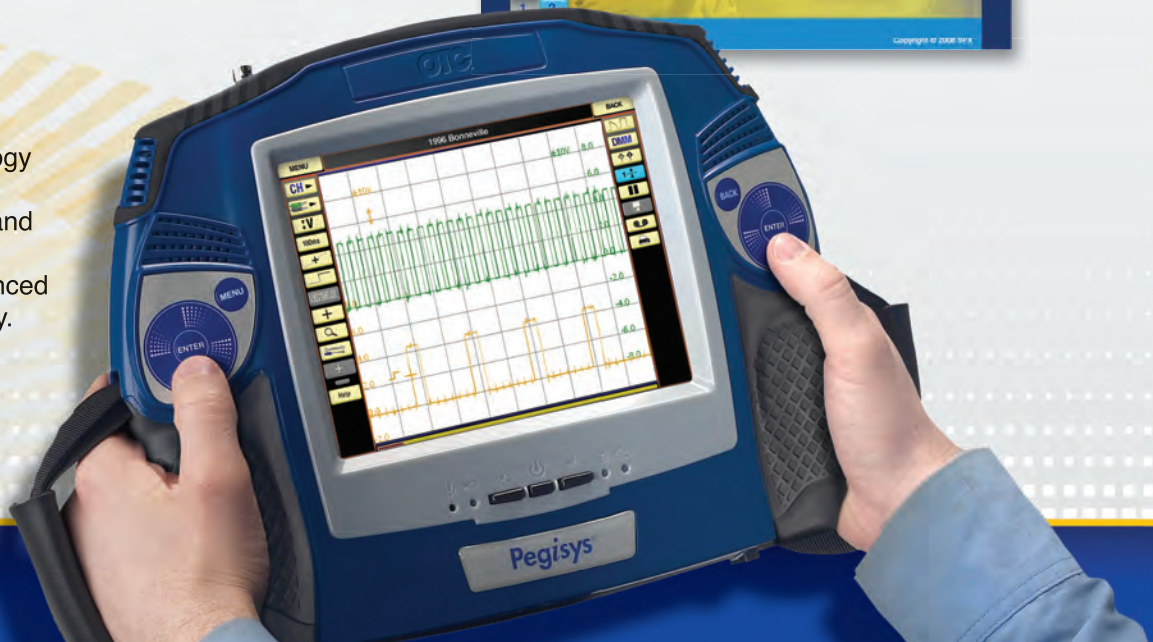
## Unique eLearning Resources

- Specifically designed training modules with video
- Instructor guided, interactive testing and certification



## High Speed Scope

Featuring the latest PC technology combined with OTC's 25-year experience in scan technology and integrated 40 MSPS high speed scope make this the most advanced diagnostic system in the industry.



## No PC Required!

Pegisys™ provides subscription updates 24/7 for direct downloading to the tool. **No PC required!** No more waiting for the latest vehicle coverage or features to be released once or twice a year or more. Now when a new vehicle coverage package is complete it is made available for download. Timely new vehicle coverage and information you need to fix the car right the first time. Valuable new features, diagnostic information, and software improvements are also made available when complete.

## First Year is Provided Free!

**Pegisys Domestic and Asian vehicle coverage subscription begins when the tool is registered and the first year is provided free!** You no longer need to worry about missing the next update because it came out right after you bought the tool. Beginning with your first download the software is fresh and the latest available. At the end of the subscription period a renewal kit is available from your OTC distributor. While most will see the tremendous value in having the latest vehicle coverage and diagnostic information, some may choose to not renew once their subscription ends. No problem, keep working with the software coverage you have at the time the subscription ends! Pegisys does not shutdown when the subscription ends like some competitive tools.

## Productivity Bundle Subscription

The value doesn't end with 24/7 updates! Pegisys Productivity Bundle subscription package combines four software applications previously sold separately – Domestic, Asian, ABS/Airbag, and InfoTech. Included in the bundle are improved versions of the Quick DTC Scan and Automated System. Whether you want to automatically scan the vehicle's many systems for DTC's or run a complete Health Check, Pegisys delivers with a push of a button.

## Optional Software

The 3825-01 European Starter Kit and 3825-02 Heavy-Duty Standard Starter Kit are sold separately. Featured in these kits are the new color coded OEM adapters for easy identification and storage. New for Pegisys is the OTC Direct-Hit Technician™ Internet based diagnostic information subscription No. 3825-45. (See Page 3 for details)

Product Description	Status	Expiration Date
Direct-Hit Technician	Active	Sat. Aug. 15 2009
USA Asian/Domestic	Active	Sat. Aug. 15 2009
USA European	Active	Sat. Aug. 15 2009
Heavy-Duty Standard	Available	
Latin America	Available	

Subscription Status

Controller	Vehicle Identification Number
Engine	1G6DM57N530102274
Controller	Calibration Identification Number 1
Engine	BOSHHA1037366956
Data Summary	
Total DTCs Found: 138	
Freeze Frame Data (Mode): 12 items found	
Total Data Items Found: 24	
Readiness Monitor Test (Mode 1) Ready: 9 Not Ready: 0 Not Supported: 2 No Data: 0	
Oxygen Sensor Tests (Mode 5): 80 items found	
Non Continuously Monitored Tests (Mode 6) Passed: 5 Failed: 7	

Automated System Test Summary

**WARNING:** Before performing any diagnostic functions, refer to the Safety Precautions and instructions provided in the User Guide and the warning provided by the vehicle manufacturer. In addition, follow any warning and descriptions provided on the scan tool screens.

Tap the New Vehicle Entry button to begin.

*Note: Tap the check box for the Demo Mode if you want to generate simulated data only for demonstration purposes.*

- From the Select the Manufacturer screen, Tap the icon that represents the vehicle manufacturer.
- Tap the vehicle specification options on each screen that appears until the complete vehicle information is entered and the illustration of the required Adapter Cable needed to connect the Scan Tool to the vehicle appears.
- Connect the Adapter Cable specified to the Scan Tool / VCI and to the vehicle DLC.
- Turn on the vehicle ignition to be testing.

On Tool HELP



## 3825 Diagnostic System

### Software

- USA Domestic / Asian Vehicle Subscription (12 Months)
- Diagnostic Information
  - Scan Diagnostic Information (Pathfinder)
  - Scope Diagnostic Information (InfoTech)
  - Repair-Trac

### Vehicle Cable Set

- OBD II Cable
- USA Domestic OEM OBD I Cables
- USA Asian OEM OBD I Cables

### Included Accessories

- Pegisys Carrying Case
- OEM OBD I Cable Carrying Case
- AirBridge™ Wireless Kit
- 100 – 240 Volt Power Supply
- Scope Accessory Kit

### Kit Includes:

<b>3825-32</b> , OBD II Adapter		<b>3825-10</b> , Chrysler 1 Adapter		<b>3825-17</b> , Toyota DCL 1/ Adapter	
<b>3825-33</b> , 100 - 240 Volt Power Supply		<b>3825-34</b> , Chrysler 3 Adapter		<b>3825-18</b> , Toyota DCL 2/ Adapter	
<b>3825-35</b> , Power cord, 6' cigarette		<b>3825-12</b> , Ford EEC Adapter		<b>3825-19</b> , Mitsubishi/ Chrysler "Y" Adapter	
<b>3825-41</b> , Scope Probe Assy Green		<b>3825-16</b> , Ford ABS Adapter		<b>3825-20</b> , Nissan 1 Adapter	
<b>3825-42</b> , Scope Probe Assy Yellow		<b>3421-93</b> , Kia Adapter		<b>3825-21</b> , Subaru Adapter	
<b>3825-43</b> , Scope Probe Assy Black		<b>3825-11</b> , MECS ABS Adapter		<b>3825-22</b> , Mitsubishi/ Hyundai Adapter	
<b>3825-44</b> , Scope KV Probe Assy		<b>3825-13</b> , Geo-Isuzu Adapter		<b>3825-23</b> , Honda Adapter	
<b>212638</b> , Battery Adapter		<b>3825-14</b> , Mazda MECS Adapter		<b>3825-24</b> , Nissan 2 Adapter	
<b>3825-09</b> , GM 12 Pin Adapter		<b>3825-15</b> , Universal 9 Pin Adapter			

Cables are color coded: **Blue = Domestic**, **Green = Asian**, **Red = European optional**.

## Optional Software and Cables



**3825-01** – USA European Starter Kit (Software and Cables)



**3825-02** – Heavy-Duty Standard Starter Kit (Software and Cables)



**3825-45** – OTC Direct-Hit Technician™, Power by Identifix® Starter Kit (Q4)



**3825-03** – Pegisys "Hot Swap" Kit



**3825-31** – 8' Vehicle Extension Cable



**3825-48** – Replacement Stylus Pack

## Optional Scope Accessories

**No. 3500-31** – Pressure/vacuum adapter - Measure pressure from 0–500 psi (0–3, 447 kPa); vacuum from 0–30 in Hg. An optional transducer is available to measure pressure from 0–3,000 psi (0–17,237 kPa).



**No. 3500-38** – High pressure transducer - Measures pressure from 0–3,000 psi (0–17,237 kPa). For use with 3500-31 adapter kit.



**No. 3500-39** – Transducer 0–500 psi, vacuum 0–30 (replacement).



**No. 3820-07** – Temperature adapter module provides scope and meters with temperature capabilities. Allows use of K-type temperature probes.



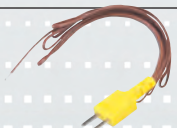
**No. 3500-03** – Surface temp probe - Measures surface temp of hoses, engine blocks, catalytic converters, and tire temp. K-type connector.



**No. 3500-04** – Air temp probe - Measures air temp when servicing HVAC systems. K-type connector.



**No. 3500-05** – Bead-type temperature probe - Measures air temp when servicing HVAC systems. K-type connector.



**No. 3500-06** – Immersion temp probe - Wire type measures liquid temp of coolant, oil, transmission fluid, fuel, etc. K-type connector.



**No. 3825-49** – Piercing probe set.



**No. 3820-13** – Low-range amp probe with display – use alone or connected to scope. Long, small jaws combined with superior performance are ideal for:

- Ignition coils
- Fuel injectors • Fuel pumps
- Relays • Electric motors
- Parasitic draw
- 0–60A range, measure to 90A, 100mV/A
- High accuracy, and low noise interference
- Non-intrusive AC/DC current measurement
- Resolution: 10mA
- Average responding, RMS calibrated
- Auto ranging, auto zero, data hold, low battery indicator



**No. 3825-54** – Mid-range amp probe with BNC adapter. Measures current in a range of 2–600 amps AC/DC.





SPX  
SERVER

## Internet Security

Providing secure virus free updates and information downloads is a top priority at SPX. All Pegasus web communication is channeled through a secure server firewall with anti-virus protection. Next, Linux™ operating system provides the ultimate protection for your productivity investment. No anti-virus software required.



## Wireless Solutions

Got connectivity? Have no fear – SPX has your solution. Introducing PegasusCONNECT™, your one-stop solution for maximizing the productivity of your Pegasus scan tool system. PegasusCONNECT™ is a flat-fee service includes business-level wireless router, on-site installation (including firewall), and configuration with Pegasus host unit. Services provided by Best Buy/Geek Squad Business Solutions Team. A customized solution for Pegasus specifications and customer needs.

**Hardware:** Linksys Wireless-G Router WRV200 with RangeBooster.

**Secure:** Specifically selected to meet the business needs of Pegasus customers.

### Features

- RangeBooster technology provides increased range and reliability.
- Includes SPI Firewall, Encryption, and Virtual Private network (VPN) features to help secure mobile worker connections.
- Multiple BSSIDs and VLANs to provide separate secure networks.
- Enhanced wireless and wired QoS for improved voice/video quality.
- Web-based interface.
- SNMP1 and 2c for remote management and monitoring of device.
- 3-year limited factory warranty (provided by Linksys).

### Why Geek Squad?

- Nationwide coverage: 700 locations throughout the US, including Alaska and Hawaii.
- Satisfaction guaranteed: If you are not completely satisfied, they will work to correct the problem – fast and free.
- Up-front pricing: No matter how long it takes to perform the service, you will know the exact cost before they start.
- No time windows: If you are scheduled for service at 1pm, that's when they'll be there.
- Proven service: Over 5 million service calls...and counting.