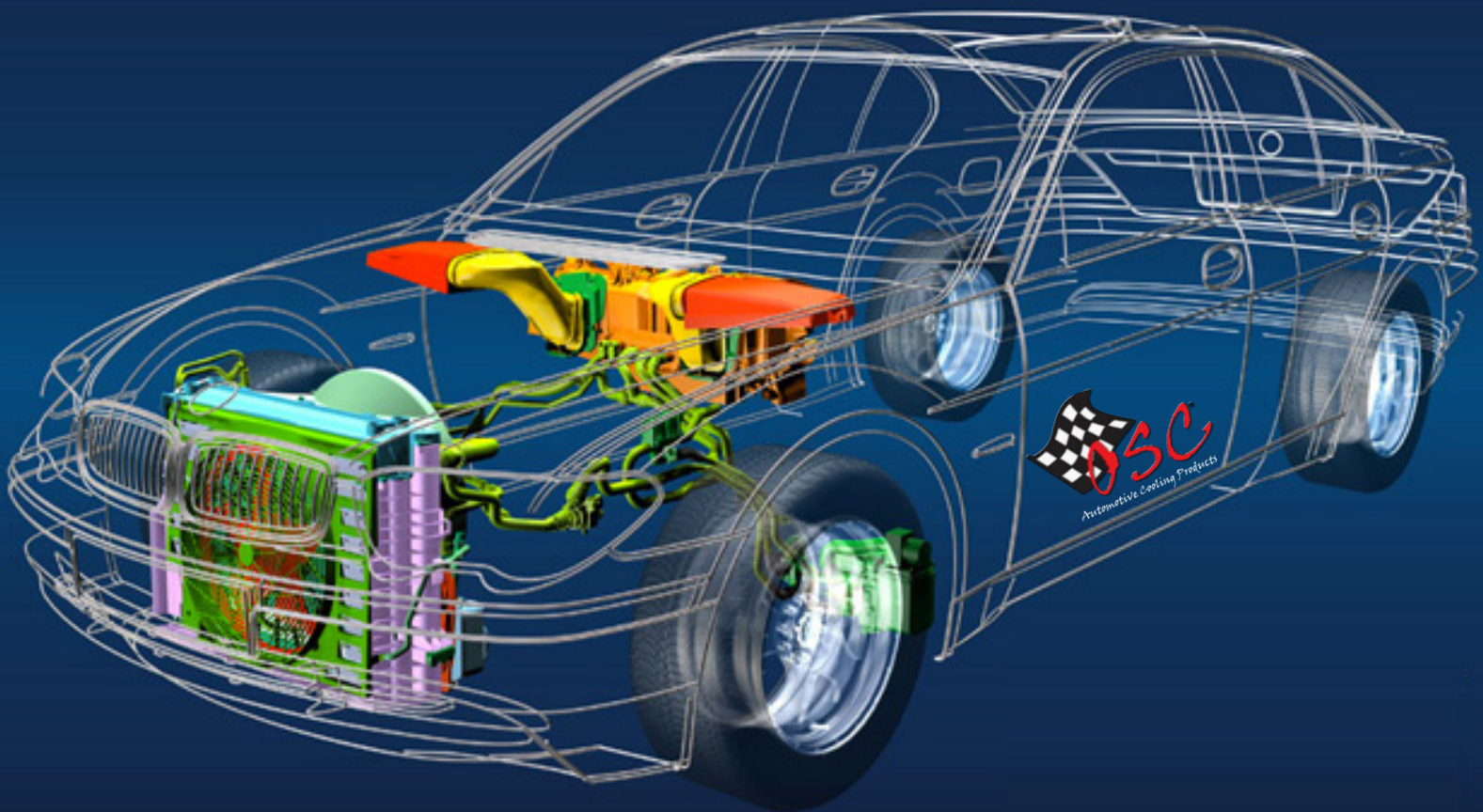


# COMPARE FOR YOURSELF

COMPARISON GUIDE FOR TOP SELLING RADIATORS



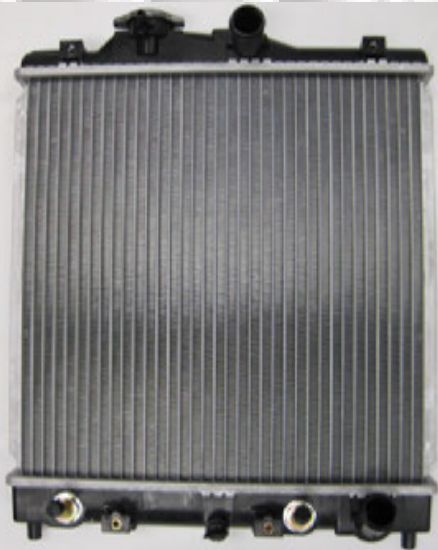
# COMPARE FOR YOURSELF

Comparison Guide for Top Selling [Radiators](#)

## OSC 1290

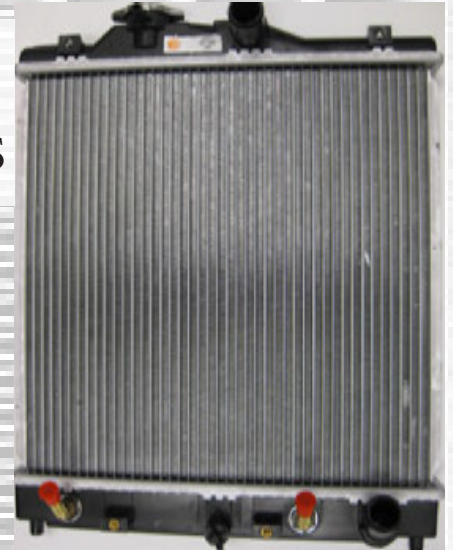
## APDI 8011290

Application: 1992-1998 Honda Civic



OSC UNIT WEIGHT 4.4 LBS

APDI UNIT WEIGHT 3.2 LBS



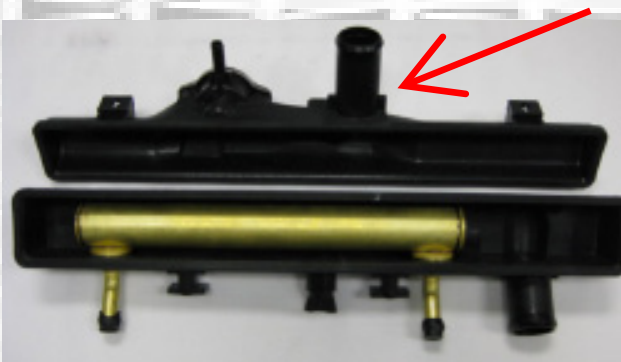
OSC 34 TUBES

AND 18 FINS PER INCH

APDI 42 TUBES

AND 17 FINS PER INCH

OSC CONCENTRIC COPPER COOLER 28 MM DIAMETER



APDI CONCENTRIC ALUMINUM COOLER 19 MM DIAMETER

OSC CORE THICKNESS 26 MM



APDI CORE THICKNESS 20 MM

# COMPARE FOR YOURSELF

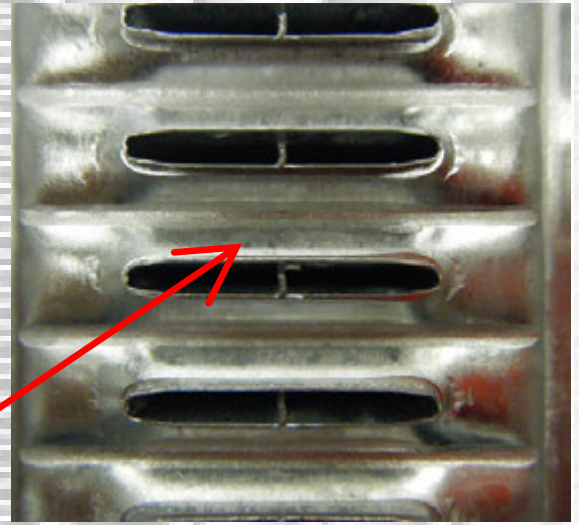
COMPARISON GUIDE FOR TOP SELLING RADIATORS

OSC 1290

APDI 8011290

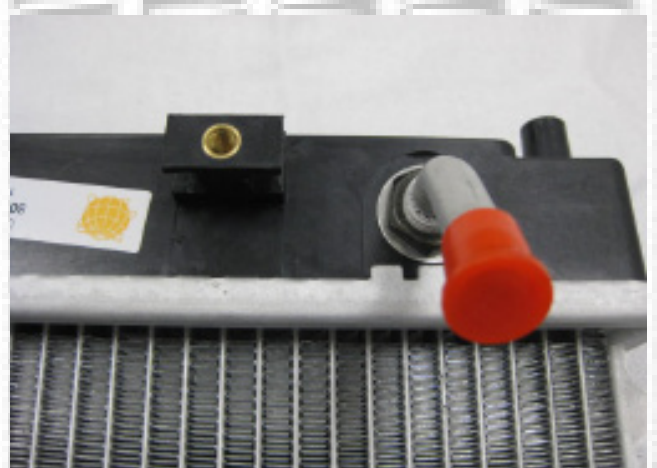
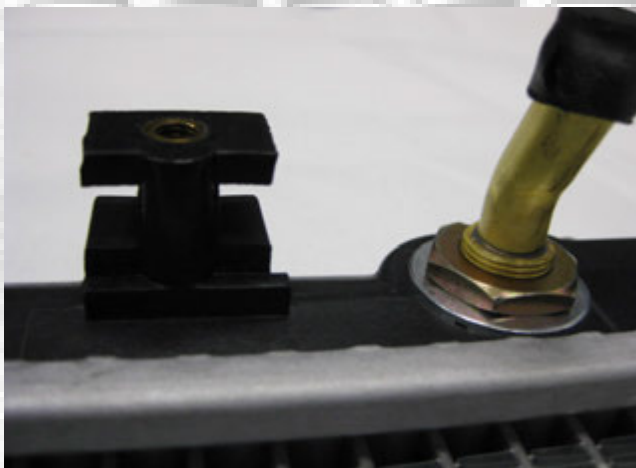
Application: 1992-1998 Honda Civic

OSC RIBBED HEADER WITH EXPANDED TUBE OPENINGS



APDI RIBBED HEADER "B TUBE" DESIGN

OSC BRAZED FITTINGS TO COOLER  
OSC MULTI-FIT DENSO TOYO



APDI BRAZED FITTINGS TO COOLER  
APDI MULTI-FIT DENSO TOYO

# COMPARE FOR YOURSELF

COMPARISON GUIDE FOR TOP SELLING RADIATORS

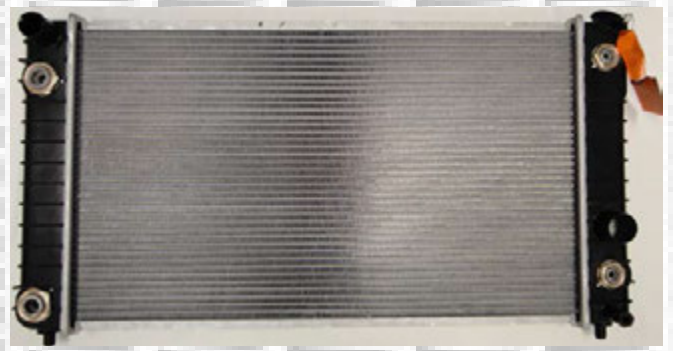
OSC 1826

APDI 8011826

Application: GM 96-05 ST Series, ST Blazers, 96-01 Bravada 4.3

OSC UNIT WEIGHT 10.6 LBS

APDI UNIT WEIGHT 8.0 LBS



OSC 34 TUBES

AND 17 FINS PER INCH

APDI 34 TUBES

AND 16 FINS PER INCH

OSC 4 PLATE STAINLESS STEEL TRANSMISSION AND ENGINE OIL COOLERS



APDI 3 PLATE ALUMINUM TRANSMISSION AND ENGINE OIL COOLERS

OSC CORE THICKNESS 26 MM



APDI CORE THICKNESS 26 MM

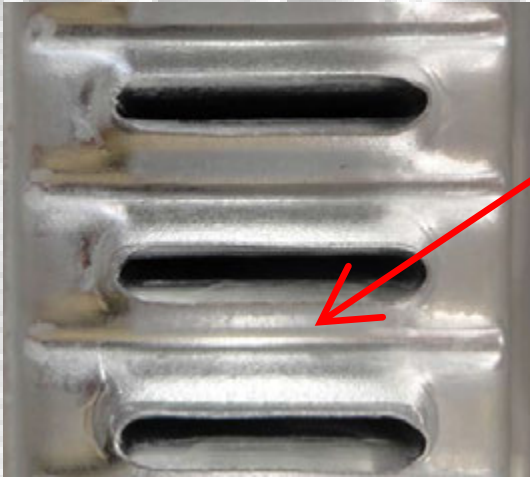
# COMPARE FOR YOURSELF

COMPARISON GUIDE FOR TOP SELLING RADIATORS

OSC 1826

APDI 8011826

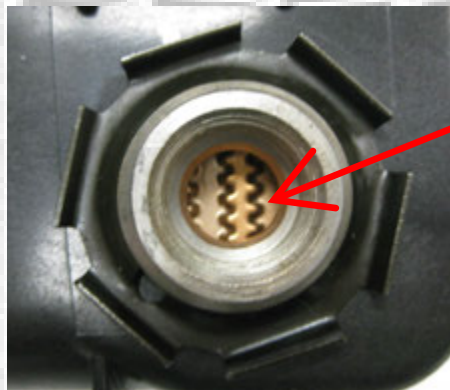
Application: GM 96-05 ST Series, ST Blazers, 96-01 Bravada 4.3



OSC RIBBED  
HEADER WITH  
EXPANDED TUBE  
OPENINGS



APDI RIBBED  
HEADER  
"B TUBE" DESIGN



OSC GM STYLE COOLER  
NUTS WITH OEM  
DIAMETER OPENINGS



APDI GM STYLE  
COOLER NUTS WITH  
OEM DIAMETER OPENINGS

OSC QUICK-CONNECT TRANSMISSION AND ENGINE OIL  
COOLER FITTINGS AND TOOLS



APDI QUICK-CONNECT TRANSMISSION AND ENGINE OIL  
COOLER FITTINGS ONLY

# COMPARE FOR YOURSELF

COMPARISON GUIDE FOR TOP SELLING RADIATORS

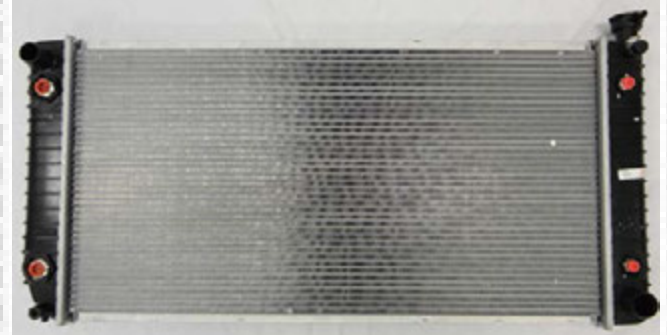
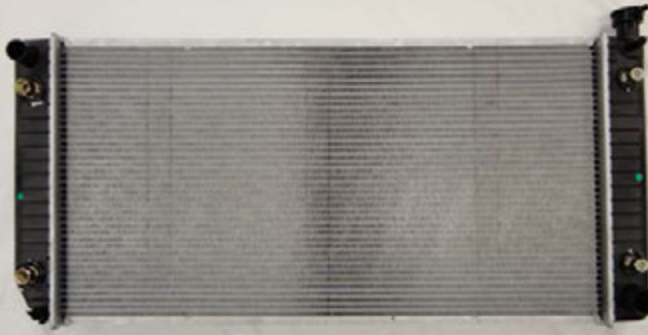
OSC 1693

APDI 8011522

Application: GM 94-00 CK Series, Tahoe, Escalade, Yukon

OSC UNIT WEIGHT 17.8 LBS

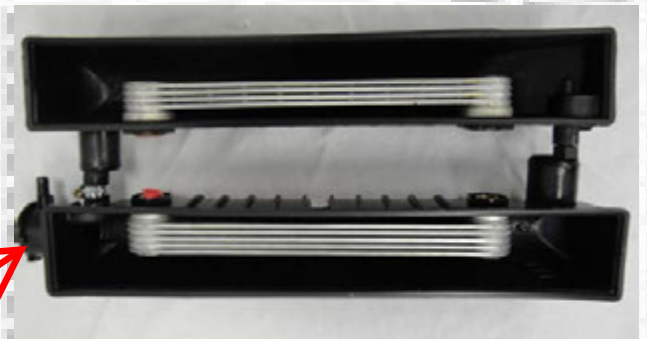
APDI UNIT WEIGHT 13.8 LBS



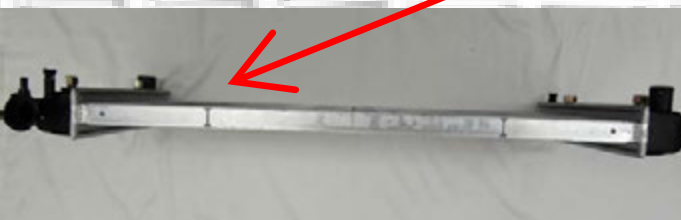
OSC 39 TUBES  
AND 18 FINS PER INCH

APDI 39 TUBES  
AND 15 FINS PER INCH

OSC PLATE STAINLESS STEEL TRANSMISSION AND  
6 PLATE ENGINE OIL COOLERS



APDI 5 PLATE ALUMINUM TRANSMISSION AND  
4 PLATE ENGINE OIL COOLERS  
OSC CORE THICKNESS 32 MM



APDI CORE THICKNESS 32 MM

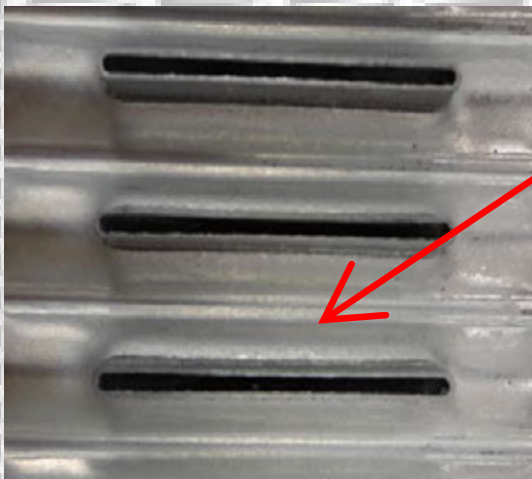
# COMPARE FOR YOURSELF

COMPARISON GUIDE FOR TOP SELLING RADIATORS

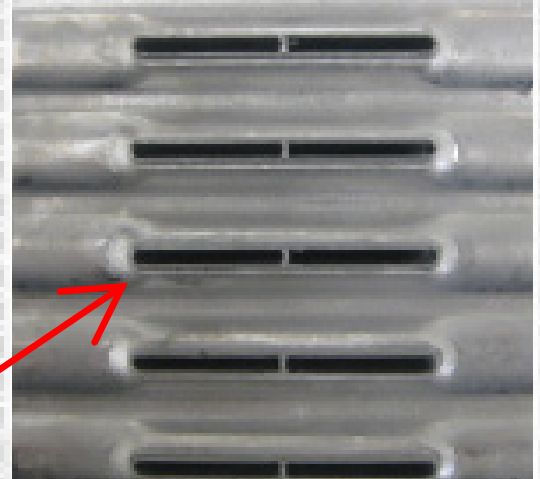
OSC 1693

APDI 8011522

Application: GM 94-00 CK Series, Tahoe, Escalade, Yukon



OSC RIBBED  
HEADER



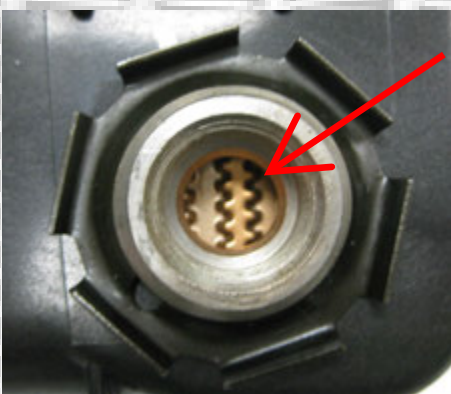
APDI RIBBED  
HEADER  
"B TUBE" DESIGN



OSC HEATER RETURN LINE  
WITH LONG LIFE THREADED  
PLASTIC CAP DESIGN



APDI HEATER RETURN LINE  
WITH RUBBER CAP AND CLAMP  
(MAY REQUIRE REPLACEMENT EVERY 1-2 YEARS)



OSC GM STYLE COOLER  
NUTS WITH OEM  
DIAMETER OPENINGS



APDI GM STYLE COOLER  
NUTS WITH OEM  
DIAMETER OPENINGS

# COMPARE FOR YOURSELF

COMPARISON GUIDE FOR TOP SELLING RADIATORS

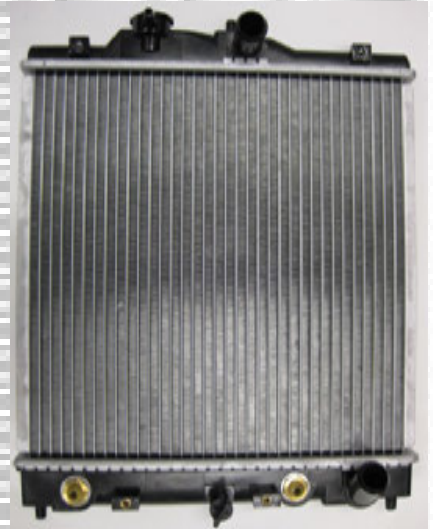
OSC 1290

REACH 41-1290

Application: 1992-1998 Honda Civic

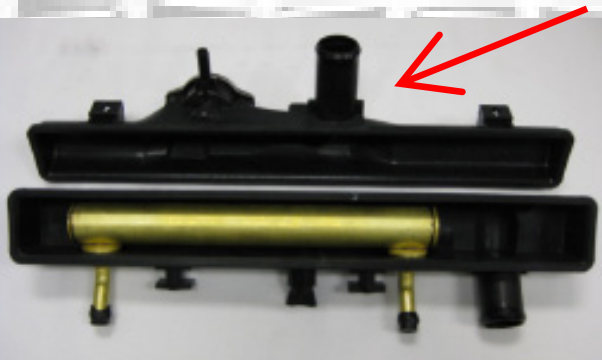


OSC UNIT WEIGHT 4.4 LBS  
REACH UNIT WEIGHT 4.2 LBS



OSC 34 TUBES  
AND 18 FINS PER INCH  
REACH 34 TUBES  
AND 18 FINS PER INCH

OSC CONCENTRIC COPPER COOLER 28 MM DIAMETER



REACH CONCENTRIC COPPER COOLER 25 MM DIAMETER

OSC CORE THICKNESS 26 MM



REACH CORE THICKNESS 26 MM

REACH



# COMPARE FOR YOURSELF

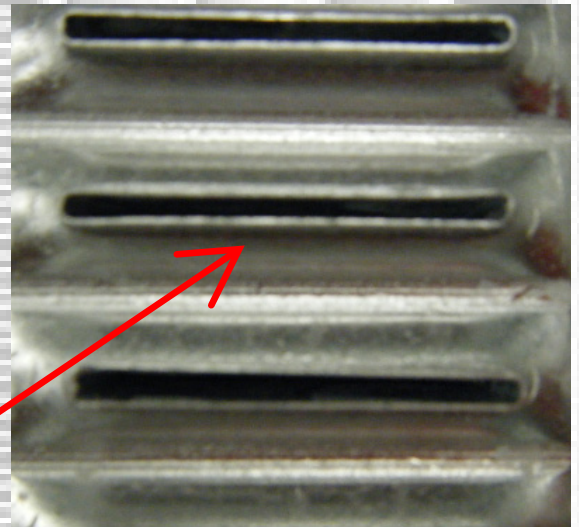
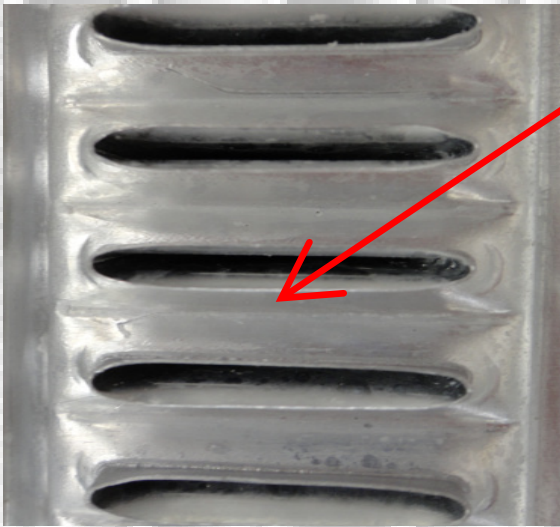
COMPARISON GUIDE FOR TOP SELLING RADIATORS

OSC 1290

REACH 41-1290

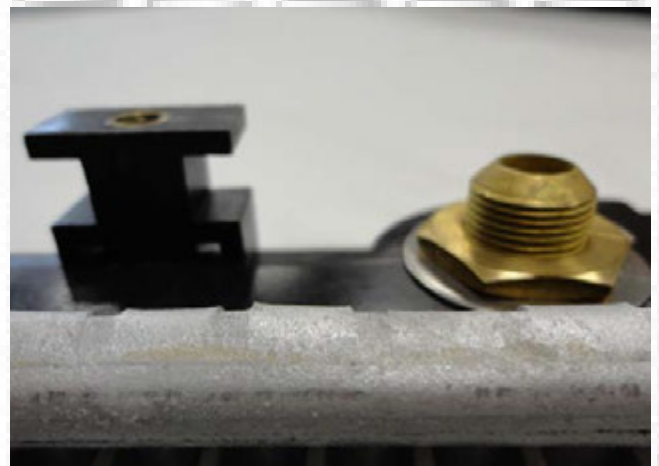
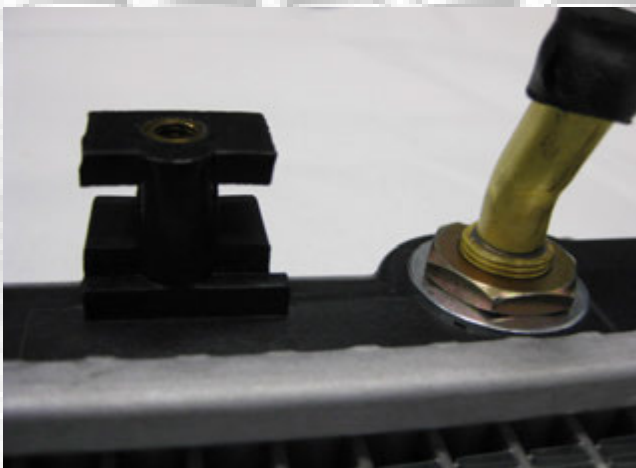
Application: 1992-1998 Honda Civic

OSC RIBBED HEADER WITH EXPANDED TUBE OPENINGS



REACH RIBBED HEADER

OSC BRAZED FITTINGS TO COOLER  
OSC MULTI-FIT DENSO TOYO



REACH SCREW-ON FITTINGS TO COOLER  
REACH MULTI-FIT DENSO TOYO

REACH

# COMPARE FOR YOURSELF

COMPARISON GUIDE FOR TOP SELLING RADIATORS

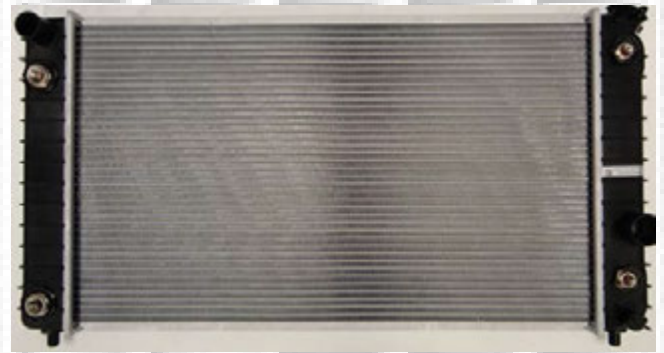
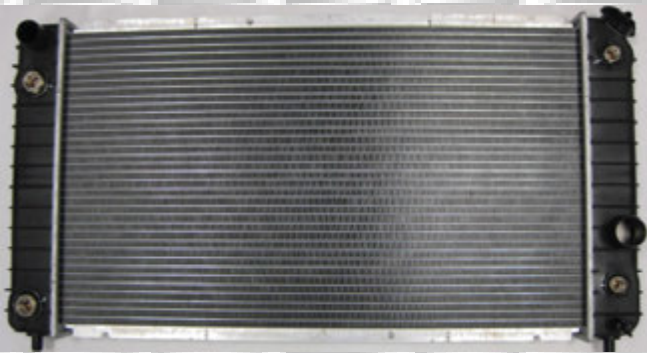
OSC 1826

REACH 41-1826

Application: GM 96-05 ST Series, ST Blazers, 96-01 Bravada 4.3

OSC UNIT WEIGHT 10.6 LBS

REACH UNIT WEIGHT 10.8 LBS



OSC 34 TUBES  
AND 17 FINS PER INCH

REACH 38 TUBES  
AND 16 FINS PER INCH

OSC 4 PLATE STAINLESS STEEL TRANSMISSION AND ENGINE OIL COOLERS



REACH 4 PLATE STAINLESS STEEL TRANSMISSION AND ENGINE OIL COOLERS

OSC CORE THICKNESS 26 MM



REACH CORE THICKNESS 26 MM

REACH

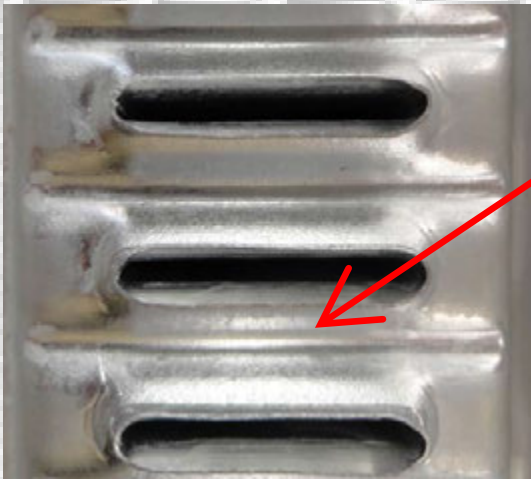
# COMPARE FOR YOURSELF

COMPARISON GUIDE FOR TOP SELLING RADIATORS

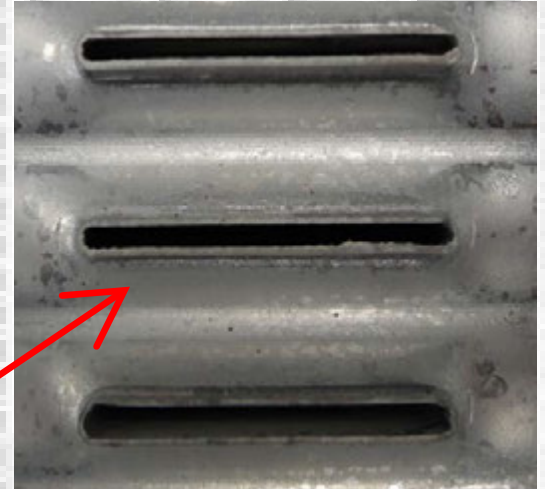
OSC 1826

REACH 41-1826

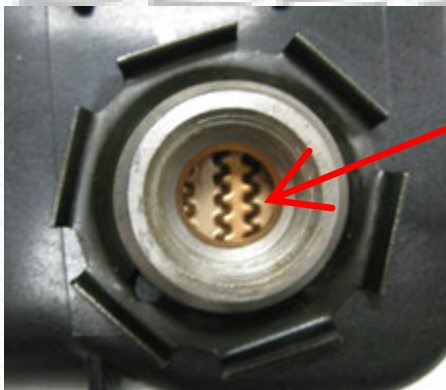
Application: GM 96-05 ST Series, ST Blazers, 96-01 Bravada 4.3



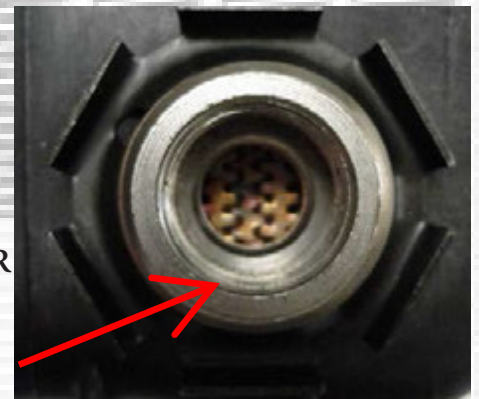
OSC RIBBED  
HEADER WITH  
EXPANDED TUBE  
OPENINGS



REACH RIBBED  
HEADER



OSC GM STYLE COOLER  
NUTS WITH OEM  
DIAMETER OPENINGS



REACH GM STYLE COOLER  
NUTS WITH OEM  
DIAMETER OPENINGS

OSC QUICK-CONNECT TRANSMISSION AND ENGINE OIL  
COOLER FITTINGS AND TOOLS



REACH QUICK-CONNECT TRANSMISSION COOLER FITTINGS ONLY

REACH

# COMPARE FOR YOURSELF

COMPARISON GUIDE FOR TOP SELLING RADIATORS

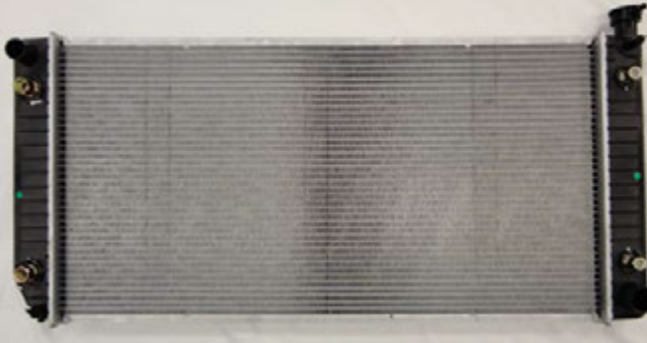
OSC 1693

REACH 41-1693

Application: GM 94-00 CK Series, Tahoe, Escalade, Yukon

OSC UNIT WEIGHT 17.8 LBS

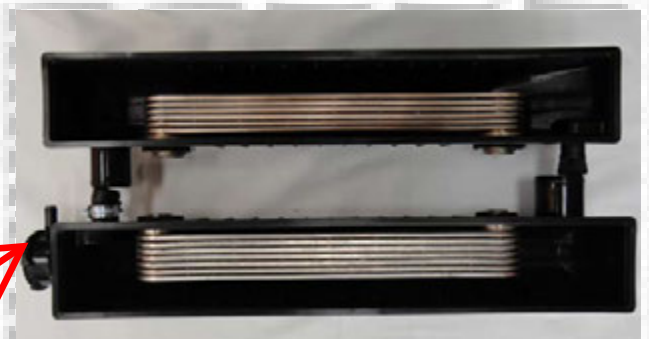
REACH UNIT WEIGHT 16.4 LBS



OSC 39 TUBES  
AND 18 FINS PER INCH

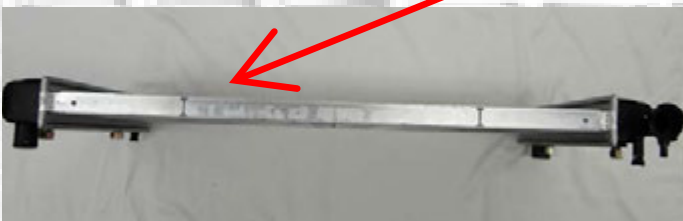
REACH 38 TUBES  
AND 17 FINS PER INCH

OSC 7 PLATE STAINLESS STEEL TRANSMISSION AND  
6 PLATE ENGINE OIL COOLERS



REACH 7 PLATE STAINLESS STEEL TRANSMISSION AND  
6 PLATE ENGINE OIL COOLERS

OSC CORE THICKNESS 32 MM



REACH CORE THICKNESS 32 MM

REACH

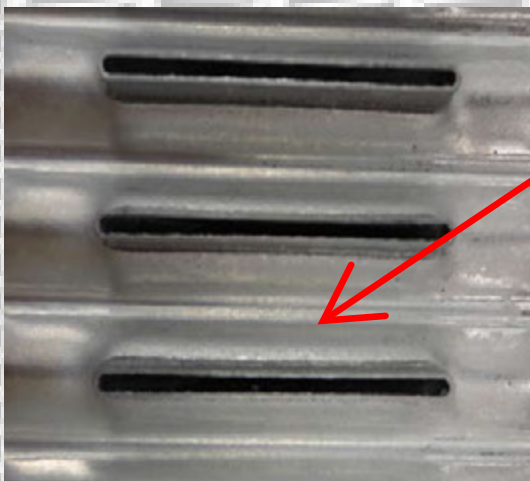
# COMPARE FOR YOURSELF

COMPARISON GUIDE FOR TOP SELLING RADIATORS

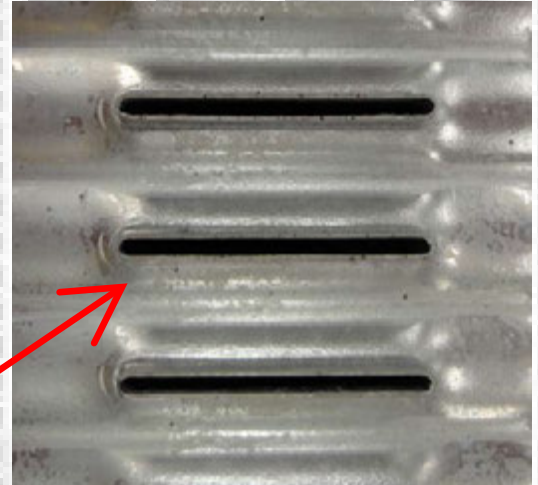
OSC 1693

REACH 41-1693

Application: GM 94-00 CK Series, Tahoe, Escalade, Yukon



OSC RIBBED  
HEADER



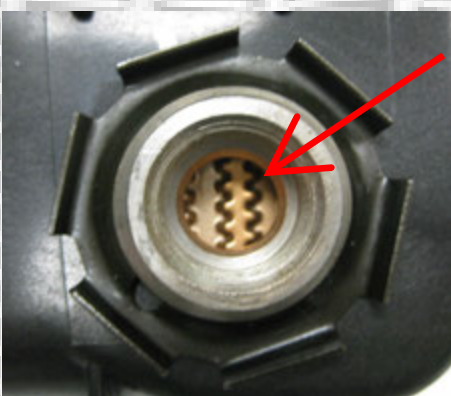
REACH RIBBED  
HEADER



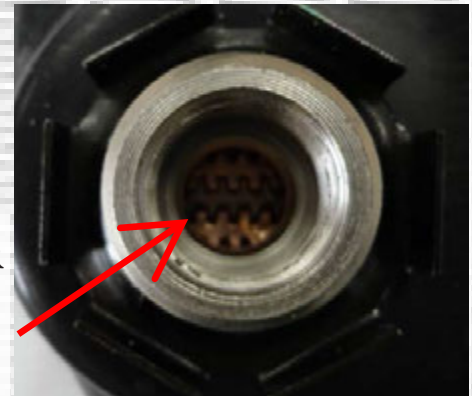
OSC HEATER RETURN LINE  
WITH LONG LIFE THREADED  
PLASTIC CAP DESIGN



REACH HEATER RETURN LINE  
WITH RUBBER CAP AND CLAMP



OSC GM STYLE COOLER  
NUTS WITH OEM  
DIAMETER OPENINGS



REACH GM STYLE COOLER  
NUTS WITH OEM  
DIAMETER OPENINGS

REACH

# COMPARE FOR YOURSELF

COMPARISON GUIDE FOR TOP SELLING RADIATORS

OSC 1290

SILLA 7236A

Application: 1992-1998 Honda Civic



OSC UNIT WEIGHT 4.4 LBS

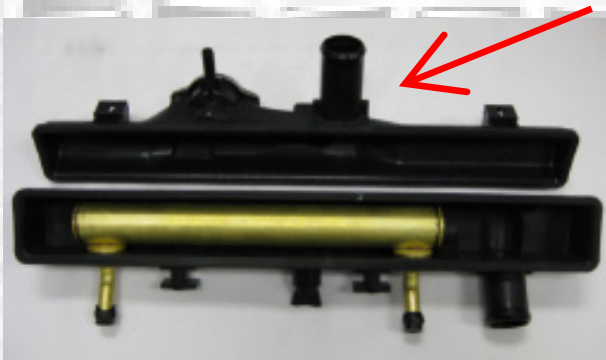
SILLA UNIT WEIGHT 3.2 LBS



OSC 34 TUBES  
AND 18 FINS PER INCH

SILLA 34 TUBES  
AND 16 FINS PER INCH

OSC CONCENTRIC COPPER COOLER 28 MM DIAMETER



SILLA CONCENTRIC ALUMINUM COOLER 25.4 MM DIAMETER

OSC CORE THICKNESS 26 MM



SILLA CORE THICKNESS 14 MM

SILLA

# COMPARE FOR YOURSELF

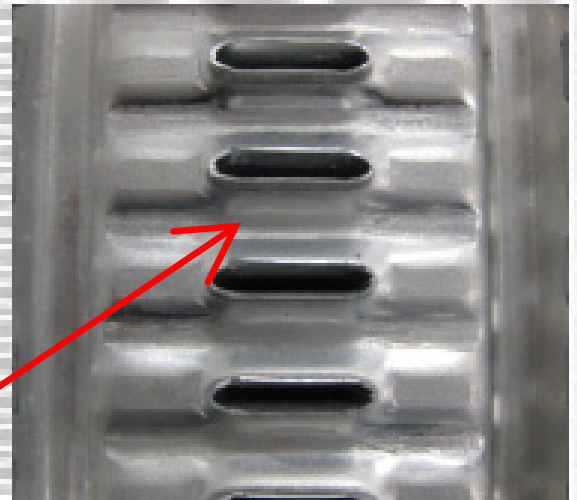
COMPARISON GUIDE FOR TOP SELLING RADIATORS

OSC 1290

SILLA 7236A

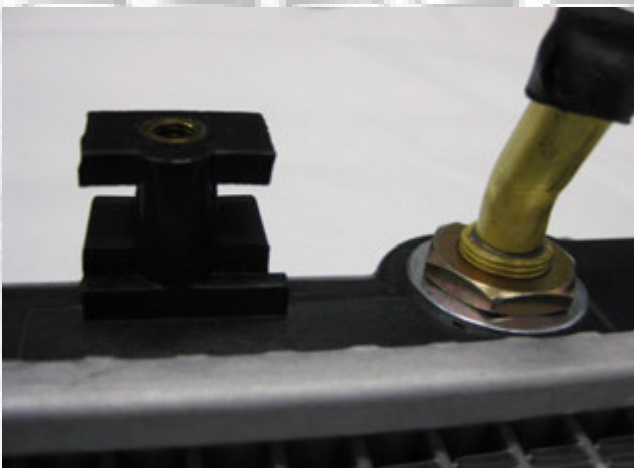
Application: 1992-1998 Honda Civic

OSC RIBBED HEADER WITH EXPANDED TUBE OPENINGS



SILLA RIBBED HEADER

OSC BRAZED FITTINGS TO COOLER  
OSC MULTI-FIT DENSO TOYO



SILLA SCREW-ON FITTINGS TO COOLER  
SILLA MULTI-FIT DENSO TOYO

SILLA

# COMPARE FOR YOURSELF

COMPARISON GUIDE FOR TOP SELLING RADIATORS

OSC 1826

SILLA 1826A

Application: GM 96-05 ST Series, ST Blazers, 96-01 Bravada 4.3

OSC UNIT WEIGHT 10.6 LBS

SILLA UNIT WEIGHT 8.6 LBS



OSC 34 TUBES  
AND 17 FINS PER INCH

SILLA 37 TUBES  
AND 18 FINS PER INCH

OSC 4 PLATE STAINLESS STEEL TRANSMISSION AND ENGINE OIL COOLERS



SILLA Concentric Aluminum TRANSMISSION AND ENGINE OIL COOLERS

OSC CORE THICKNESS 26 MM



SILLA CORE THICKNESS 26 MM

SILLA



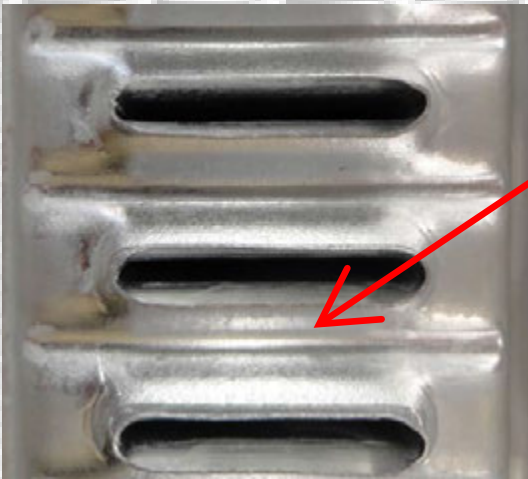
# COMPARE FOR YOURSELF

COMPARISON GUIDE FOR TOP SELLING RADIATORS

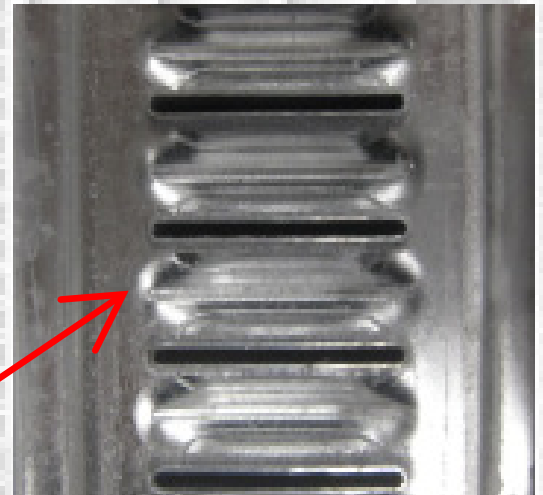
OSC 1826

SILLA 1826A

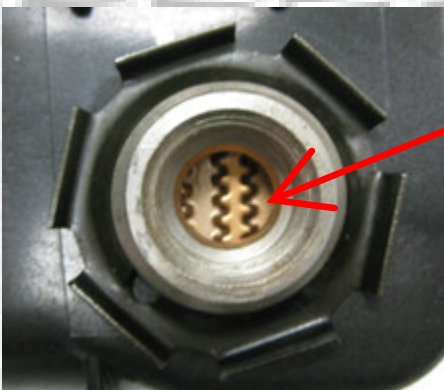
Application: GM 96-05 ST Series, ST Blazers, 96-01 Bravada 4.3



OSC RIBBED  
HEADER WITH  
EXPANDED TUBE  
OPENINGS



SILLA NON  
RIBBED HEADER



OSC GM STYLE COOLER  
NUTS WITH OEM  
DIAMETER OPENINGS



SILLA GM STYLE  
COOLER NUTS WITH NON  
OEM DIAMETER OPENINGS

OSC QUICK-CONNECT TRANSMISSION AND ENGINE OIL  
COOLER FITTINGS AND TOOLS



SILLA QUICK-CONNECT TRANSMISSION COOLER AND  
ENGINE OIL COOLER FITTINGS ONLY

SILLA

# COMPARE FOR YOURSELF

COMPARISON GUIDE FOR TOP SELLING RADIATORS

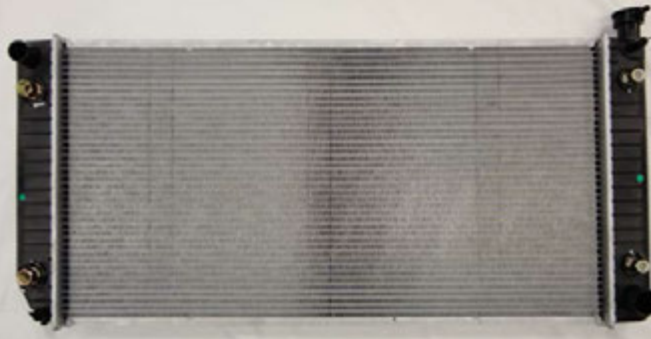
OSC 1693

SILLA 1693A

Application: GM 94-00 CK Series, Tahoe, Escalade, Yukon

OSC UNIT WEIGHT 17.8 LBS

SILLA UNIT WEIGHT 11.6 LBS



OSC 39 TUBES  
AND 18 FINS PER INCH

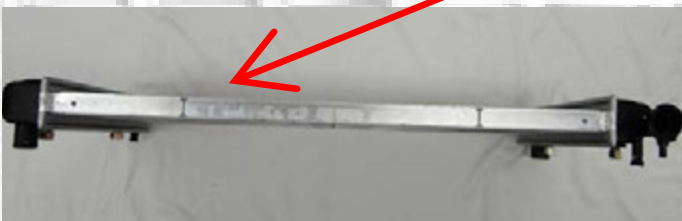
SILLA 42 TUBES  
AND 18 FINS PER INCH

OSC 7 PLATE STAINLESS STEEL TRANSMISSION AND  
6 PLATE ENGINE OIL COOLERS



SILLA ALUMINUM CONCENTRIC TRANSMISSION AND  
ENGINE OIL COOLERS

OSC CORE THICKNESS 32 MM



SILLA CORE THICKNESS 22 MM

SILLA

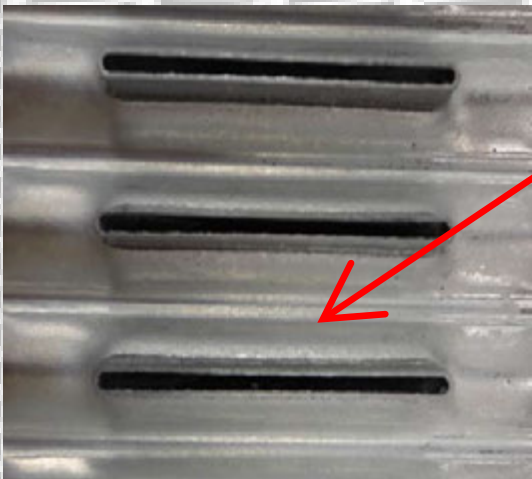
# COMPARE FOR YOURSELF

COMPARISON GUIDE FOR TOP SELLING RADIATORS

OSC 1693

SILLA 1693A

Application: GM 94-00 CK Series, Tahoe, Escalade, Yukon



OSC RIBBED  
HEADER



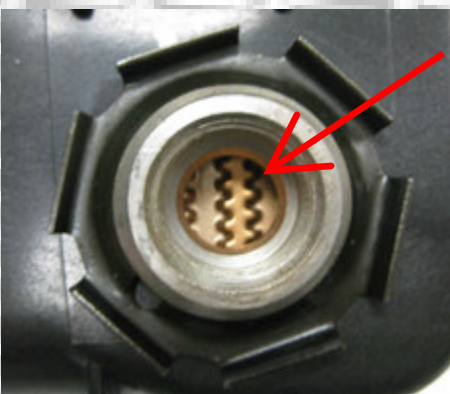
SILLA RIBBED  
HEADER



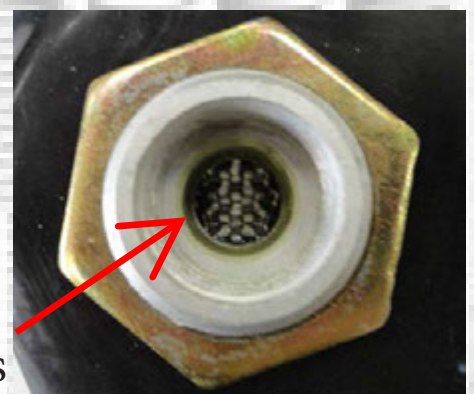
OSC HEATER RETURN LINE  
WITH LONG LIFE THREADED  
PLASTIC CAP DESIGN



SILLA HEATER RETURN LINE  
WITH RUBBER CAP AND CLAMP  
(MAY REQUIRE REPLACEMENT EVERY 1-2 YEARS)



OSC GM STYLE COOLER  
NUTS WITH OEM  
DIAMETER OPENINGS



SILLA NON GM STYLE  
COOLER NUTS WITH NON  
OEM DIAMETER OPENINGS

SILLA

# COMPARE FOR YOURSELF

COMPARISON GUIDE FOR TOP SELLING RADIATORS

## OSC 1290

## SPECTRA CU1290

Application: 1992-1998 Honda Civic



OSC UNIT WEIGHT 4.4 LBS

SPECTRA UNIT WEIGHT 4.2 LBS



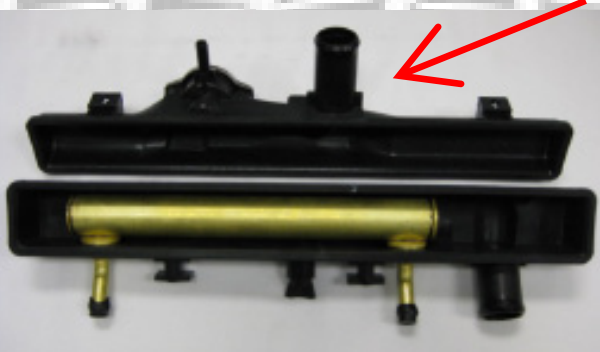
OSC 34 TUBES

AND 18 FINS PER INCH

SPECTRA 34 TUBES

AND 17 FINS PER INCH

OSC CONCENTRIC COPPER COOLER 28 MM DIAMETER



SPECTRA CONCENTRIC COPPER COOLER 25.4 MM DIAMETER

OSC CORE THICKNESS 26 MM



SPECTRA CORE THICKNESS 22 MM

**SPECTRA**

# COMPARE FOR YOURSELF

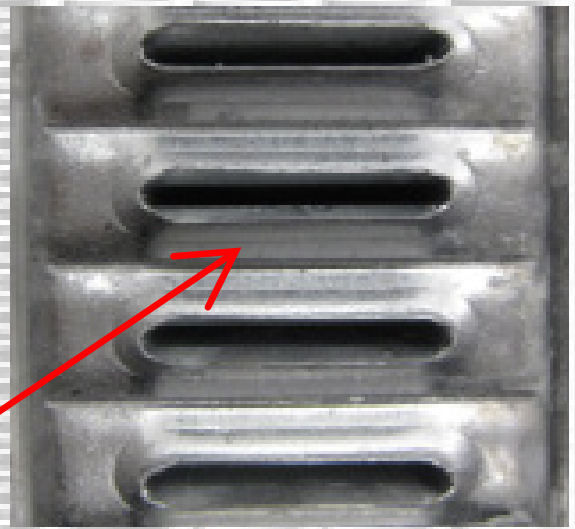
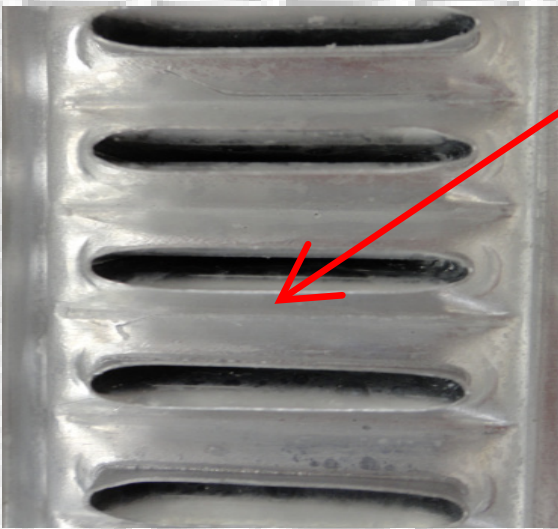
COMPARISON GUIDE FOR TOP SELLING RADIATORS

OSC 1290

SPECTRA CU1290

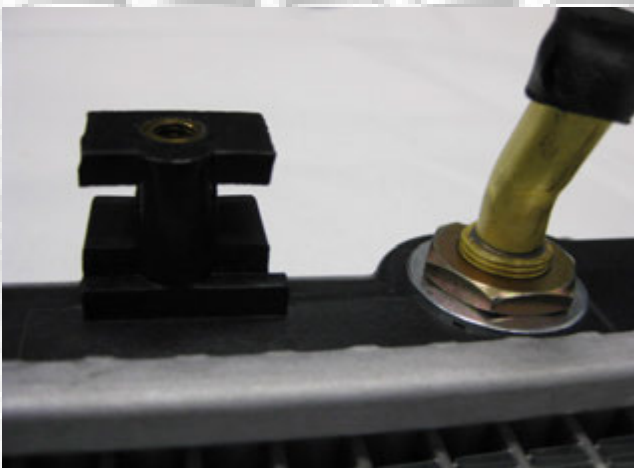
Application: 1992-1998 Honda Civic

OSC RIBBED HEADER WITH EXPANDED TUBE OPENINGS



SPECTRA RIBBED HEADER WITH EXPANDED TUBE OPENINGS

OSC BRAZED FITTINGS TO COOLER  
OSC MULTI-FIT DENSO TOYO



SPECTRA SCREW-ON FITTINGS TO COOLER  
SPECTRA MULTI-FIT DENSO TOYO KIT

SPECTRA

# COMPARE FOR YOURSELF

COMPARISON GUIDE FOR TOP SELLING RADIATORS

## OSC 1826

## SPECTRA CU1826

Application: GM 96-05 ST Series, ST Blazers, 96-01 Bravada 4.3

OSC UNIT WEIGHT 10.6 LBS

SPECTRA UNIT WEIGHT 10 LBS



OSC 34 TUBES  
AND 17 FINS PER INCH

SPECTRA 35 TUBES  
AND 16 FINS PER INCH

OSC 4 PLATE STAINLESS STEEL TRANSMISSION AND ENGINE OIL COOLERS



SPECTRA 4 Plate STAINLESS STEEL TRANSMISSION AND ENGINE OIL COOLERS

OSC CORE THICKNESS 26 MM



SPECTRA CORE THICKNESS 26 MM

**SPECTRA**

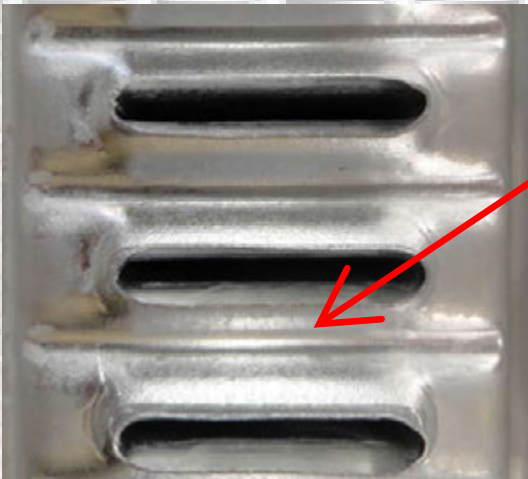
# COMPARE FOR YOURSELF

COMPARISON GUIDE FOR TOP SELLING RADIATORS

OSC 1826

SPECTRA CU1826

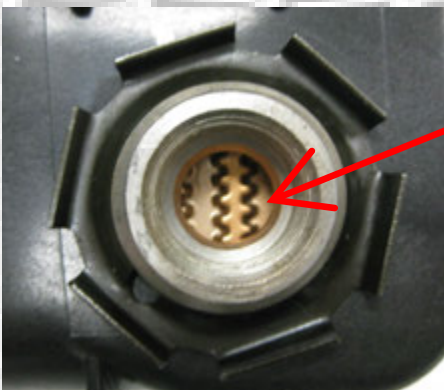
Application: GM 96-05 ST Series, ST Blazers, 96-01 Bravada 4.3



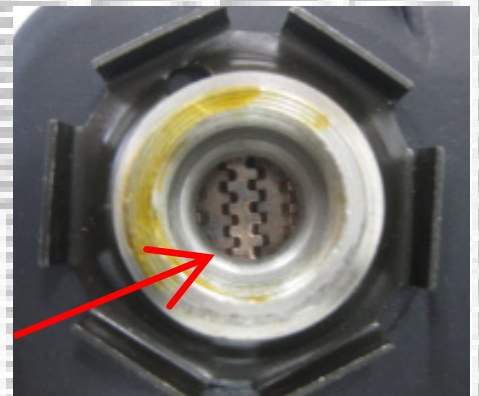
OSC RIBBED  
HEADER WITH  
EXPANDED TUBE  
OPENINGS



SPECTRA  
NON RIBBED  
HEADER



OSC GM STYLE COOLER  
NUTS WITH OEM  
DIAMETER OPENINGS



SPECTRA GM STYLE  
COOLER NUTS WITH OEM  
DIAMETER OPENINGS

OSC QUICK-CONNECT TRANSMISSION AND ENGINE OIL  
COOLER FITTINGS AND TOOLS



SPECTRA QUICK-CONNECT TRANSMISSION COOLER  
FITTINGS AND TOOL ONLY

SPECTRA

# COMPARE FOR YOURSELF

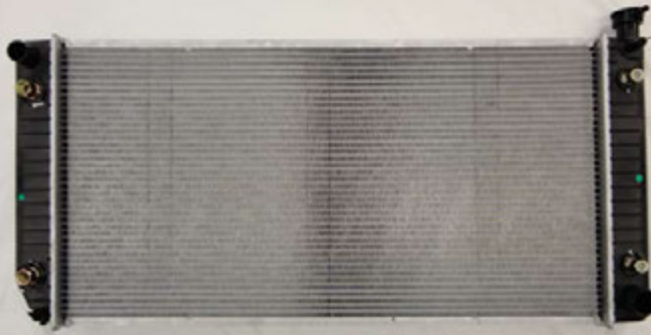
COMPARISON GUIDE FOR TOP SELLING RADIATORS

OSC 1693

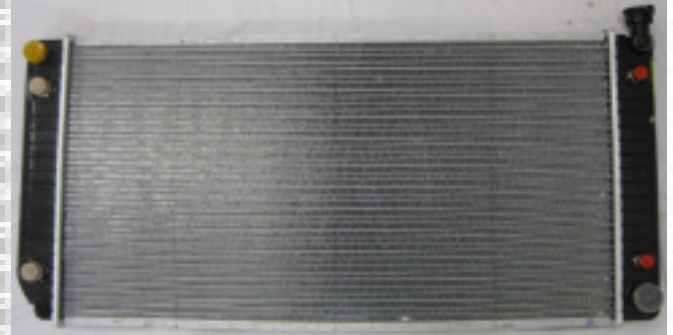
SPECTRA CU1693

Application: GM 94-00 CK Series, Tahoe, Escalade, Yukon

OSC UNIT WEIGHT 17.8 LBS



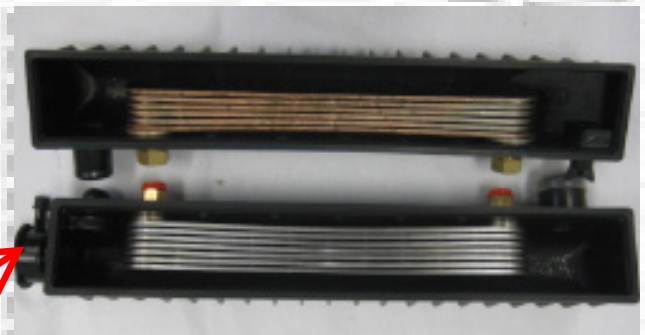
SPECTRA UNIT WEIGHT 16.4 LBS



OSC 39 TUBES  
AND 18 FINS PER INCH

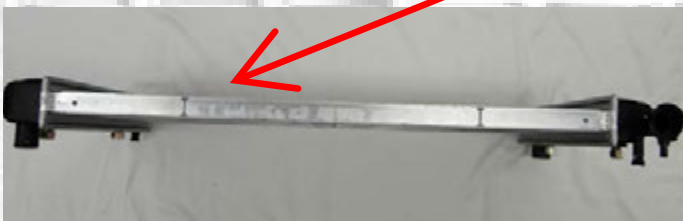
SPECTRA 39 TUBES  
AND 14 FINS PER INCH

OSC 7 PLATE STAINLESS STEEL TRANSMISSION AND  
6 PLATE ENGINE OIL COOLERS



SPECTRA 7 PLATE STAINLESS STEEL TRANSMISSION AND  
6 PLATE ENGINE OIL COOLERS

OSC CORE THICKNESS 32 MM



SPECTRA CORE THICKNESS 32 MM

**SPECTRA**



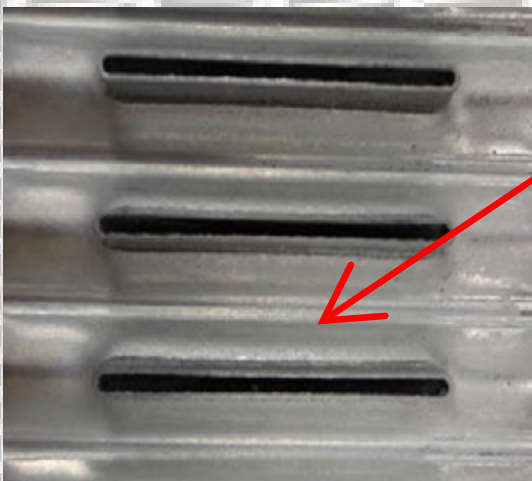
# COMPARE FOR YOURSELF

COMPARISON GUIDE FOR TOP SELLING RADIATORS

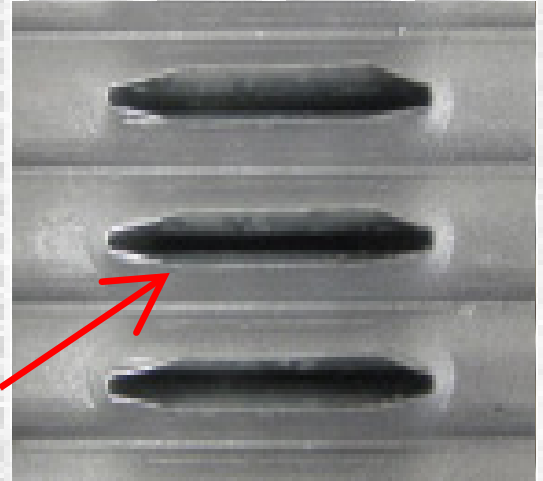
OSC 1693

SPECTRA CU1693

Application: GM 94-00 CK Series, Tahoe, Escalade, Yukon



OSC RIBBED  
HEADER



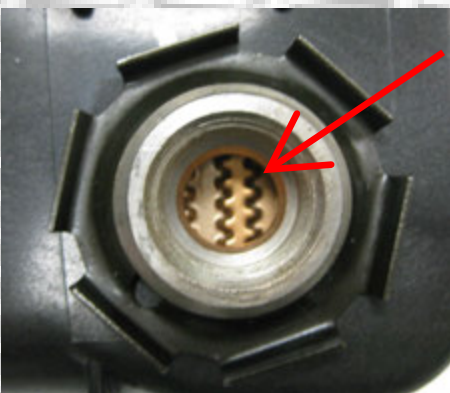
SPECTRA RIBBED  
HEADER WITH  
EXPANDED TUBE  
OPENINGS



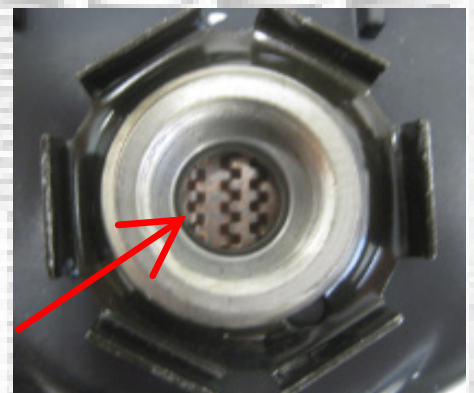
OSC HEATER RETURN LINE  
WITH LONG LIFE THREADED  
PLASTIC CAP DESIGN



SPECTRA HEATER RETURN LINE  
WITH RUBBER CAP AND CLAMP  
(MAY REQUIRE REPLACEMENT EVERY 1-2 YEARS)



OSC GM STYLE COOLER  
NUTS WITH OEM  
DIAMETER OPENINGS



SPECTRA GM STYLE  
COOLER NUTS WITH OEM  
DIAMETER OPENINGS

SPECTRA

# COMPARE FOR YOURSELF

COMPARISON GUIDE FOR TOP SELLING RADIATORS

OSC 1290

VISTA PRO 432352

Application: 1992-1998 Honda Civic



OSC UNIT WEIGHT 4.4 LBS

VP UNIT WEIGHT 3.6 LBS



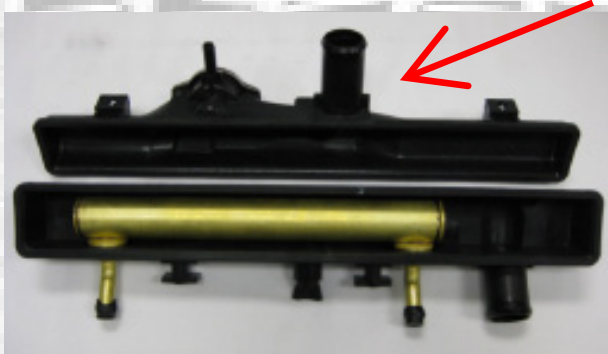
OSC 34 TUBES

AND 18 FINS PER INCH

VP 37 TUBES

AND 20 FINS PER INCH

OSC CONCENTRIC COPPER COOLER 28 MM DIAMETER



VP CONCENTRIC COPPER COOLER 19 MM DIAMETER

OSC CORE THICKNESS 26 MM



VP CORE THICKNESS 14 MM

# COMPARE FOR YOURSELF

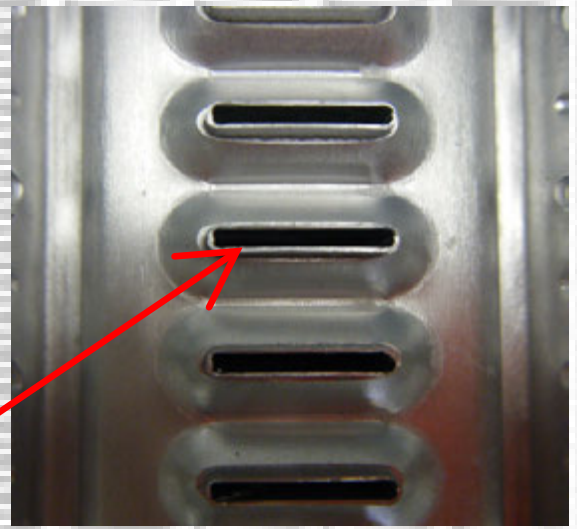
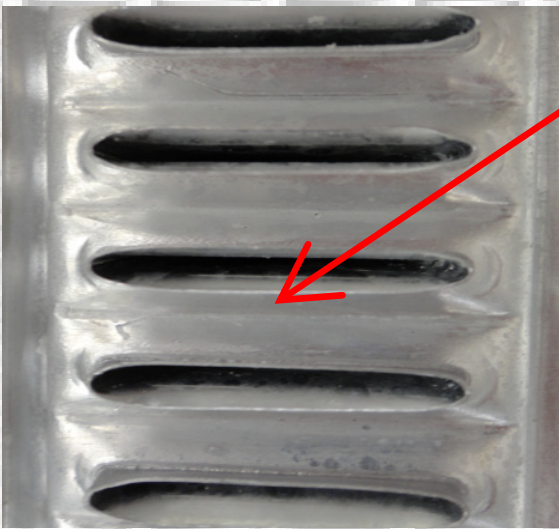
COMPARISON GUIDE FOR TOP SELLING RADIATORS

OSC 1290

VISTA PRO 432352

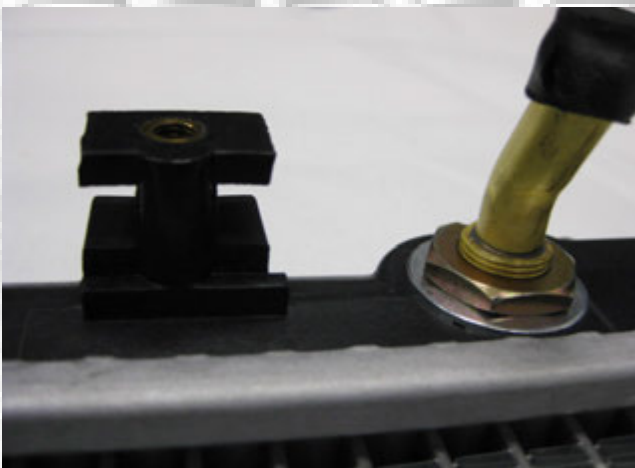
Application: 1992-1998 Honda Civic

OSC RIBBED HEADER WITH EXPANDED TUBE OPENINGS



VP NON RIBBED HEADER

OSC BRAZED FITTINGS TO COOLER  
OSC MULTI-FIT DENSO TOYO



VP SCREW-ON FITTINGS TO COOLER  
VP NON MULTI-FIT DENSO TOYO

VISTA PRO

# COMPARE FOR YOURSELF

COMPARISON GUIDE FOR TOP SELLING RADIATORS

OSC 1826

VISTA PRO 431405

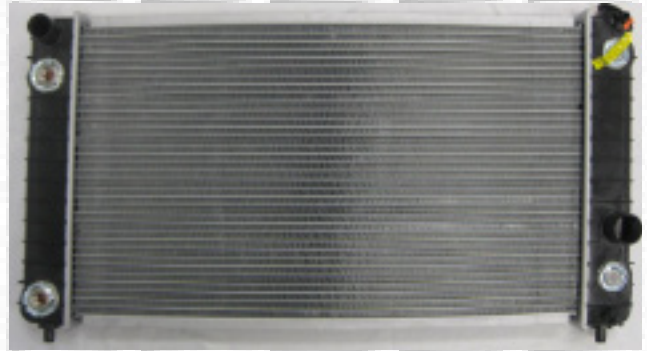
Application: GM 96-05 ST Series, ST Blazers, 96-01 Bravada 4.3

OSC UNIT WEIGHT 10.6 LBS



OSC 34 TUBES  
AND 17 FINS PER INCH

VP WEIGHT 9.2 LBS



VP 33 TUBES  
AND 16 FINS PER INCH

OSC 4 PLATE STAINLESS STEEL TRANSMISSION AND ENGINE OIL COOLERS



VP 2 PLATE STAINLESS STEEL TRANSMISSION AND ENGINE OIL COOLERS

OSC CORE THICKNESS 26 MM



VP CORE THICKNESS 26 MM

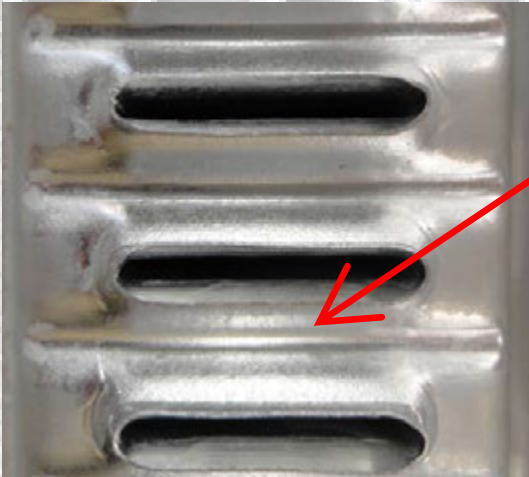
# COMPARE FOR YOURSELF

COMPARISON GUIDE FOR TOP SELLING RADIATORS

OSC 1826

VISTA PRO 431405

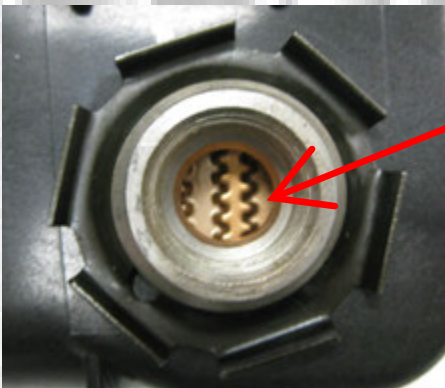
Application: GM 96-05 ST Series, ST Blazers, 96-01 Bravada 4.3



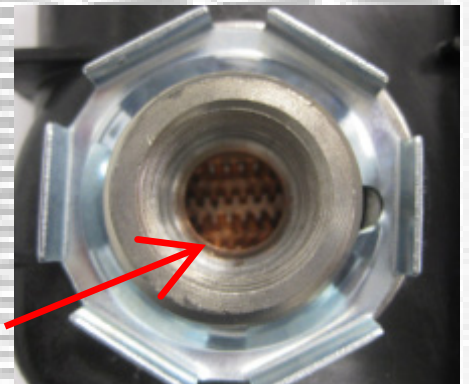
OSC RIBBED  
HEADER WITH  
EXPANDED TUBE  
OPENINGS



VISTA PRO  
NON RIBBED  
HEADER



OSC GM STYLE COOLER  
NUTS WITH OEM  
DIAMETER OPENINGS



VP GM STYLE  
COOLER NUTS WITH OEM  
DIAMETER OPENINGS

OSC QUICK-CONNECT TRANSMISSION AND ENGINE OIL  
COOLER FITTINGS AND TOOLS



VP QUICK-CONNECT TRANSMISSION AND  
ENGINE OIL COOLER FITTINGS ONLY

# COMPARE FOR YOURSELF

COMPARISON GUIDE FOR TOP SELLING RADIATORS

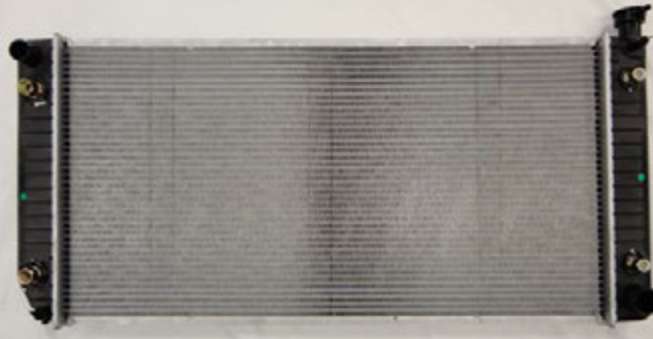
OSC 1693

VISTA PRO 431333

Application: GM 94-00 CK Series, Tahoe, Escalade, Yukon

OSC UNIT WEIGHT 17.8 LBS

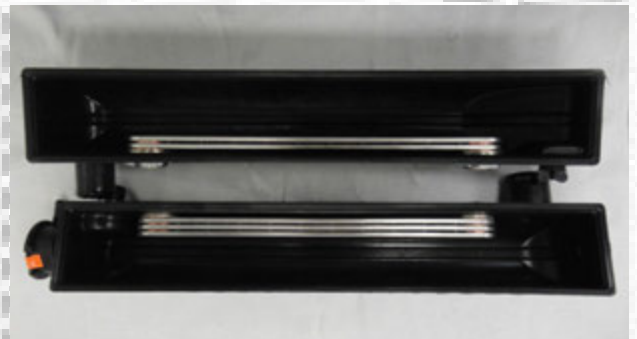
VP UNIT WEIGHT 13.6 LBS



OSC 39 TUBES  
AND 18 FINS PER INCH

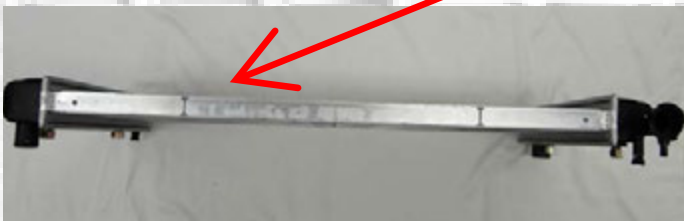
VP 38 TUBES  
AND 16 FINS PER INCH

OSC 7 PLATE STAINLESS STEEL TRANSMISSION AND  
6 PLATE ENGINE OIL COOLERS



VP 3 PLATE STAINLESS STEEL TRANSMISSION AND  
2 PLATE ENGINE OIL COOLERS

OSC CORE THICKNESS 32 MM



VP CORE THICKNESS 32 MM

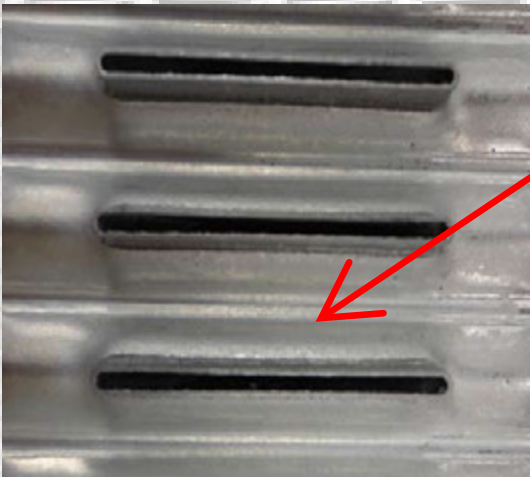
# COMPARE FOR YOURSELF

COMPARISON GUIDE FOR TOP SELLING RADIATORS

OSC 1693

VISTA PRO 431333

Application: GM 94-00 CK Series, Tahoe, Escalade, Yukon



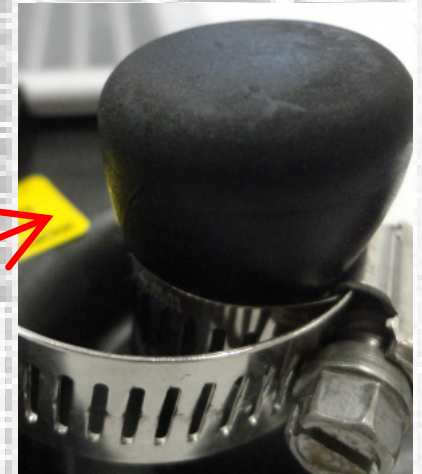
OSC RIBBED  
HEADER



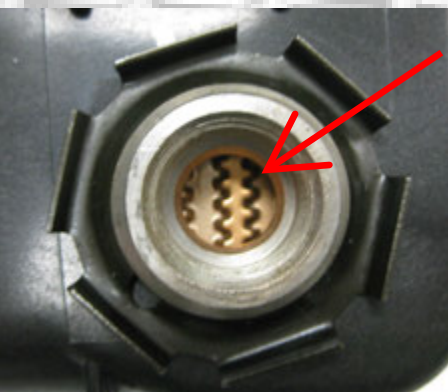
VP RIBBED  
HEADER



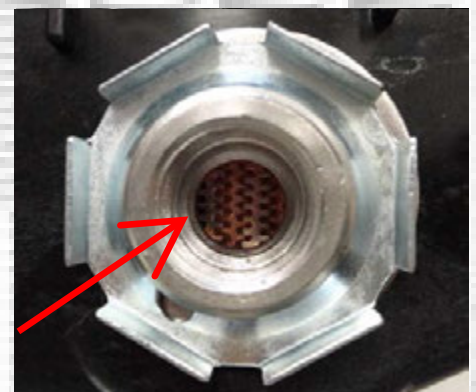
OSC HEATER RETURN LINE  
WITH LONG LIFE THREADED  
PLASTIC CAP DESIGN



VP HEATER RETURN LINE  
WITH RUBBER CAP AND CLAMP  
(MAY REQUIRE REPLACEMENT EVERY 1-2 YEARS)



OSC GM STYLE COOLER  
NUTS WITH OEM  
DIAMETER OPENINGS



VP GM STYLE  
COOLER NUTS WITH OEM  
DIAMETER OPENING