

Side Flange Modification Reference for TOYOTA Supra JZA80 2JZ-GTE Before Minor Change 6MT



Picture 1

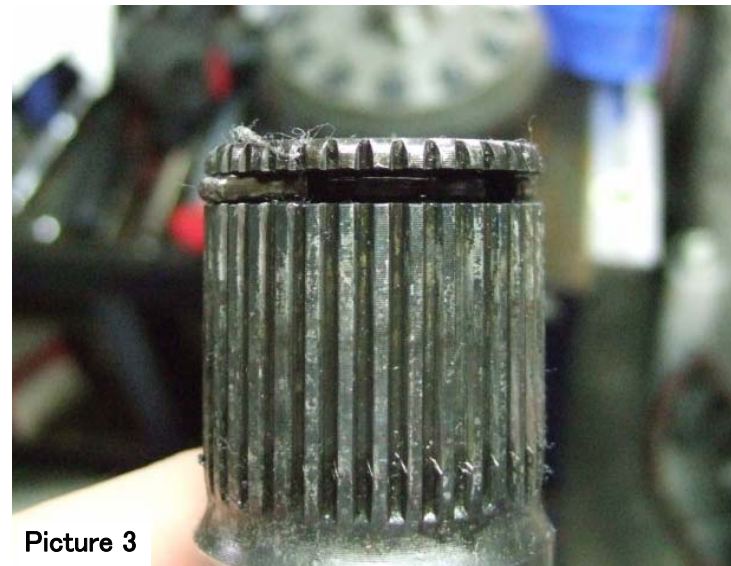
On the top of TOYOTA OEM side flanges for JZA80 2JZ-GTE Before Minor Change 6MT have a protruding area (trapezoid seen from the side) shown as Picture 1.

The protruding area interferes with the OS GIKEN Super Lock LSD inside parts.

Please shave the protruding area flat shown as Picture 2 and 3.



Picture 2



Picture 3

Attention: Please be aware of potential risks and hazards when installing our products. We do not take any responsibility for any loss and/or injury occurred when our products are modified, re-used and/or ill-fitted.

All information on this sheet is based on Japanese Domestic Model vehicles and may not be applicable in your country.

Specifications may be changed without notice.