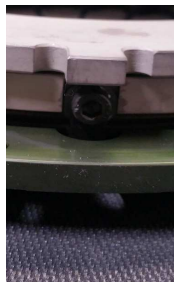


OSGIKEN

OS GIKEN GRAND TOURING OVERHAUL INSTRUCTIONS



THE GRAND TOURING CLUTCH HAS SPECIAL DETAILS UPON INSTALLATION THAT MUST BE FOLLOWED EXACTLY FOR PROPER OVERHAUL AND OPERATION.

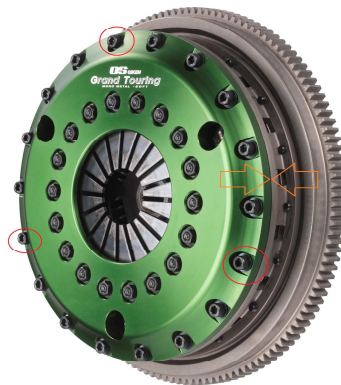


UPON DISASSEMBLY OF THE GRAND TOURING YOU WILL NOTICE THESE (3) CLIPS WHICH HOLD THE PRESSURE PLATE TO THE COVER.

THESE CLIPS MUST BE PERFECTLY CENTERED TO THE COVER AND TO THE CLUTCH BASKET (HOUSING).

IN ORDER TO DO THIS YOU WILL NEED TO LIGHTLY TIGHTEN THE CLIPS SO THAT THE PRESSURE PLATE CAN SLIGHTLY MOVE.

- 1) INSTALL THE PRESSURE PLATE AND COVER ONTO THE CLUTCH BASKET AND ALIGN THE COVER BY INSTALLING (3) COVER BOLTS.
- 2) ONCE THE COVER BOLTS ARE INSTALLED, MARK THE COVER AND CLUTCH HOUSING WITH A PEN TO NOTE ORIENTATION.
- 3) ONCE EVERYTHING IS ALIGNED, REMOVE THE COVER/PRESSURE PLATE CAREFULLY. TIGHTEN THE CLIP BOLTS HAND TIGHT THEN PROCEED WITH THE CLUTCH OVERHAUL/INSTALLATION.



WHEN REINSTALLING THE CLUTCH COVER BOLTS, MAKE SURE THE CONCAVE WASHER IS ORIENTED AS SHOWN HERE:

