

ORACLE®

JEEP JK LED OFF-ROAD MIRROR INSTALLATION GUIDE



TOOLS NEEDED:

FLAT & PHILLIPS SCREWDRIVER



ELECTRICAL TAPE



T20/T25/T35/T40 TORX BITS

ORACLE
LIGHTING



REMOVING THE DOOR PANEL



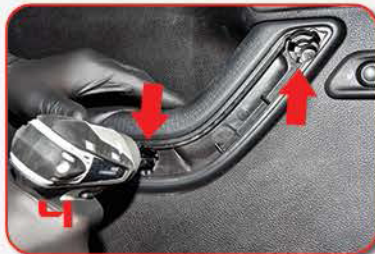
USE A FLATHEAD SCREWDRIVER OR PANEL TOOL TO POP OFF THIS TRIM PIECE.



USE A FLATHEAD SCREWDRIVER OR PANEL TOOL TO POP OFF THIS TRIM PIECE.



USE A T-20 TORX BIT TO REMOVE (1) BOLT BEHIND DOOR HANDLE.

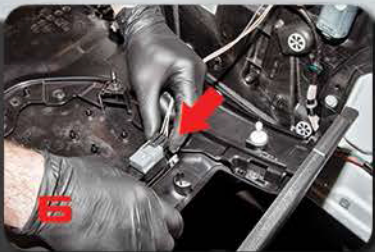


REMOVE THESE TWO (2) PHILLIPS SCREWS.



USE A T-20 TORX BIT TO REMOVE (2) BOLTS. BEGIN PRYING DOOR PANEL STARTING FROM BOTTOM. THE REST IS HELD IN WITH CLIPS.

REMOVING THE STOCK MIRRORS



DISCONNECT THE DOOR LOCKING SWITCH CLIP FROM DOOR PANEL.



USE A T-35 TORX BIT TO REMOVE THESE TWO (BOLTS) HOLDING THE MIRROR TO THE DOOR.



DISCONNECT THIS CLIP WHICH IS THE MIRROR POWER CONNECTOR.



YOU CAN NOW REMOVE THE MIRROR FROM THE DOOR. *TECH TIP: BEFORE PULLING MIRROR WIRES THROUGH, TIE A FISH LINE FOR RE-ROUTING THE WIRE BACK THROUGH THE DOOR EASILY.*



USE A T-40 TORX BIT TO REMOVE THE BOLT FROM THE BASE.

INSTALLING THE ORACLE OFF-ROAD MIRROR:



11 TO SEPERATE THE BASE FROM THE MIRROR, TAP SLIGHTLY ON THE BOTTOM OF THE ASSEMBLY.



12 LIFT CAREFULLY ON THE GLASS UNTIL SMALL CLIPS SNAP AWAY FROM THE HOUSING. DISCONNECT THE HEATED MIRROR CONNECTORS.



13 REMOVE THE THREE (3) T-20 TORX SCREWS. THE LOCATIONS ARE MARKED IN THE PREVIOUS PICTURE; A, B AND C.



THESE ARE MADE TO LOCK INTO EACH OTHER. YOU WILL NOTICE THE GROOVES UPON CLOSE INSPECTION.

14 WHEN SEPERATING THESE TWO (2) PIECES, TAKE NOTE HOW THE STOCK MIRROR WIRING IS RUN. THE WIRING FOR THE LED MIRROR WILL RUN THE SAME WAY.



15 YOU WILL NOW INSTALL THE STOCK MIRROR MECHANISM (D) INTO THE ORACLE OFF-ROAD MIRROR (E).



LIP IS MADE TO FIT FLUSH.

16 ROUTE THE LED WIRES AND THE STOCK MIRROR POWER WIRES THROUGH LOCATIONS 1, 2 AND 3.



17 REPLACE THE THREE (3) T-20 TORX SCREWS AND TIGHTEN DOWN.



18 REPLACE THE T-40 TORX SCREW TO THE BOTTOM OF THE BASE AND TIGHTEN DOWN.



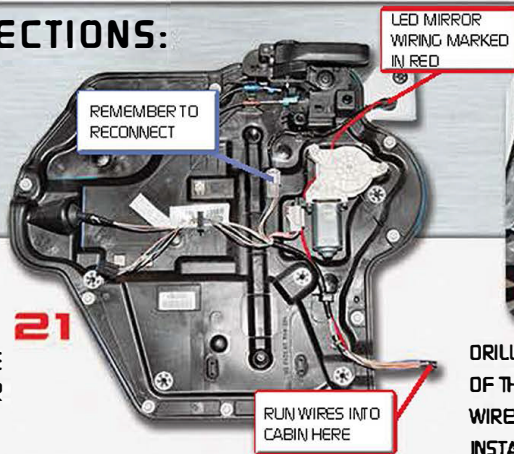
REMEMBER TO RECONNECT THE HEATED MIRROR CONNECTORS BEFORE SNAPPING GLASS IN PLACE.

19 APPLY AN EVEN AMOUNT OF PRESSURE TO REPLACE GLASS. YOU WILL HEAR CLIPS SNAP IN.

OPTIONAL WIRING DIRECTIONS:



20 RUN A POSITIVE (+) AND NEGATIVE (-) WIRE FROM YOUR BATTERY OR 12 VOLT POWER SOURCE INTO THE CABIN.



21

RUN WIRES INTO CABIN HERE



22

DRILL A 1/32" HOLE INTO THE PANEL TO THE LEFT OF THE STEERING COLUMN. CRIMP YOUR LED MIRROR WIRES AND 12V POWER WIRES EACH TO A SPADE AND INSTALL A SWITCH TO POWER ON/OFF THE LED MIRRORS.