



# AR-S AMERICAN RUNNER STAINLESS RUNNING BOARD Part #: 128078 VEHICLE BRACKET CONFIGURATION (03/2009)

## USE BRACKET#1,2,3 FOR:

### Buick

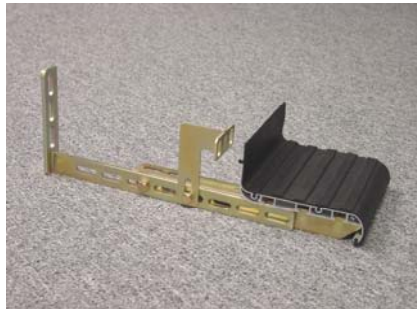
04-07 Rainier

### Chevy/GMC/Cadillac

02-09 Escalade ESV/ESV

00-09 Tahoe/Yukon

99-09 Yukon Denali



### *Optional configuration using bracket#4.*

Using bracket#4 cut in half and mounted on top to the existing hole of chassis, attach bracket#5 vertically to bracket#4. Then attach bracket#2 to bracket#5 and extend to the main frame. Adjust to the desired position, mark and drill to main frame. Please check for clearance before drilling See picture below. Repeat the procedures for the remaining brackets.

Pictures shown below is for the driver side.



Pictures shown below is for the passenger side with A/C lines.



Tap blue and black/red wires from the relay to the White and Orange wires on the courtesy light located on the driver side kick panel.

---

**USE BRACKET# 1,2,5 FOR:**

**BUICK**

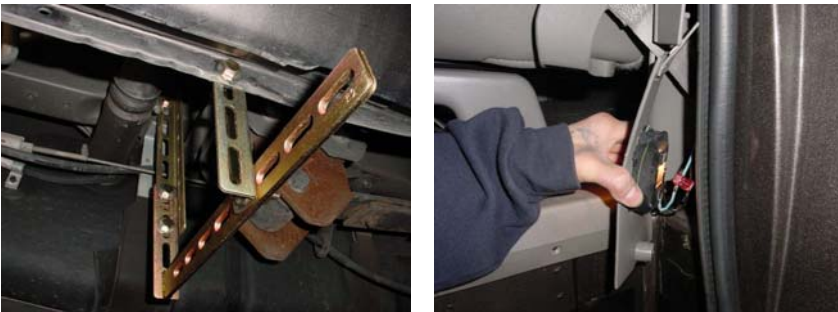
02-07 Rendezvous

**Chevy/GMC**

07-09 Acadia

90-05 Astro/Safari (w/o rocker) *\*May require bracket#4 for extension.*

DRIVER SIDE SHOWN BELOW .



DOMELITE WIRE IS (-) BLUE, LOCATED ON THE DRIVER SIDE REAR PILLAR.

PASSENGER SIDE SHOWN BELOW.



04-06 Colorado/Canyon Crew Cab / Crew Cab Z71 (w/ flares)

04-07 Canyon Crew Cab (w/o flares)

04-08 Equinox

**Chrysler**

07-08 Aspen

## Dodge

00-08 Dakota Quad Cab 4Dr (w/ flares)  
2009 Journey  
94-01 Ram Club/Quad/Sport Cab  
02-08 Ram Quad Cab SLT New Body  
2009 Ram 1500 Quad Cab

## Ford

02-09 Explorer 4Dr *\*See instructions/pictures below.*

1. Remove bottom side rocker panel in order to install brackets.
2. Identify bracket #4, align and mount to the existing holes horizontally against the bottom of the chassis.
3. Identify bracket #5 and attach to bracket #4 by using supplied bolts and nuts, loosely tighten only.
4. Identify bracket #2 and shorten the bracket length by 1 1/2", attach it to bracket #5 and extend to the main frame.
5. With the door open, mark and drill 1 hole on the main frame at the desired location by holding the running board up where the rubber edge touches the bottom of the chassis, then adjust running board.  
(Note: Before drilling, check and make sure there is absolutely no interfering wires, AC lines, brake lines, etc. in the drilling area.). Repeat step 2 through 5 for the remaining brackets.



Optional: dome light trigger can be found on passenger side pick panel (black/pink wire is + trigger).

## Kia

2009 Borrego

## Mazda

86-06 MPV (low clearance) *\*May require trimming brackets.*

## Mercury

93-02 Villager (low clearance)

## Mitsubishi

2008 Raider Crew Cab

## Nissan

98-09 Frontier Crew Cab *\*May require cutting bracket#1&2 to length. Mount bracket#5 on outside pinch weld area (see picture below).*

98-09 Frontier King/Extended Cab (wheel-to-wheel)

93-02 Quest (low clearance) *\*May require trimming brackets.*

## Pontiac

06-09 Torrent

**Suzuki**

2009 Equator Double Cab  
07-08 XL-7

**Toyota**

00-09 Tacoma Double Cab

