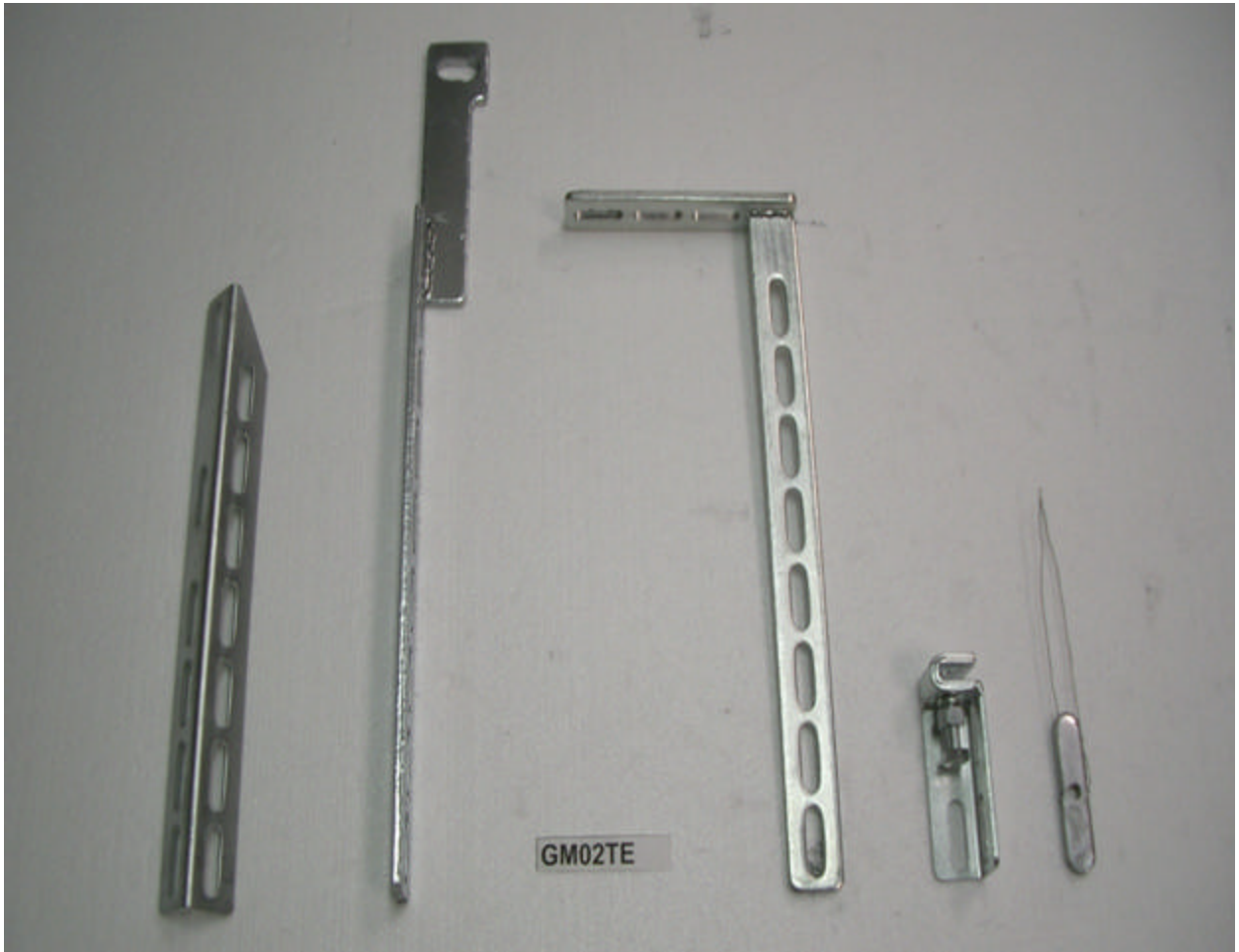


# NO-DRILL BRACKET PART# GM02TE COMPONENT BREAKDOWN



#1  
6 pcs

#2  
2 pcs

#3  
4 pcs

#4  
6 pcs

#5  
12 pcs

## PINCH WELD BRACKET SPECIAL INSTRUCTIONS



Before installing the pinch weld bracket on the vehicle, please follow these instructions:

1. Install a nut on the bolt, tightened down halfway through the length of the bolt thread.
2. Install a lock washer after the nut.
3. Tighten down the bolt-nut-lock washer assembly onto the pinch weld bracket. Make sure that the lock washer does not fall off the bolt.
4. Slip the pinch weld bracket onto the proper pinch weld location. Tighten down the bolt to hold the bracket in place. Once the bracket is sufficiently tightened down on the pinch weld, tighten down the nut towards the pinch weld thereby compressing the lock washer. The lock washer is necessary to prevent the assembly from loosening up.

# NO-DRILL BRACKET PART# GM02TE

## 02-06 CHEVY/GMC TRAIL BLAZER / ENVOY

NOTE: All instructions are for the driver side unless otherwise specified. For the passenger side, orientation of the main frame bracket will be reversed and sequence of the main frame, pinch weld, and extension brackets will also be reversed for proper alignment.)

### A. FRONT BRACKET



PICTURE# 1



PICTURE# 2

1. Look for cross bar behind the front wheels that has 4 installation bolts on the driver side of the vehicle (Picture# 1). Remove the outer left bolt and install Bracket# 2 using the same original bolt (Picture# 2).
2. Install Bracket# 4 on the pinch weld area, making sure that Bracket# 2 is perpendicular to the body of the truck (Picture# 2).
3. Align Bracket# 1 with Bracket# 2&4. Tighten down with 2 bolts, 4 washers, 2 lock washers, and 2 nuts (Picture# 2).

### B. MIDDLE BRACKET



PICTURE# 1



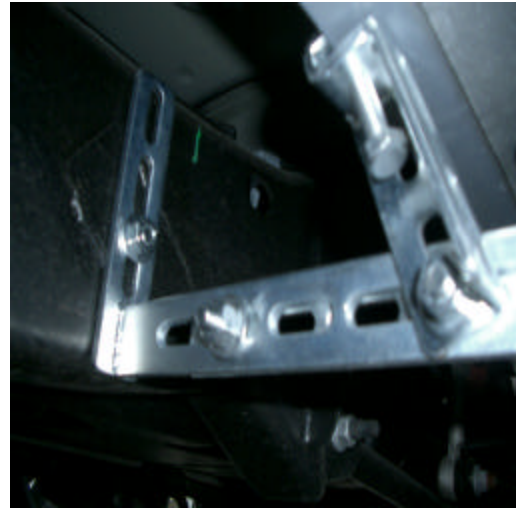
PICTURE# 2

1. Towards the middle of the vehicle, look for the area of the chassis with 2 round holes and 1 triangular hole. Use the big circular hole to place a nut plate, Bracket# 5, in.
2. Install Bracket# 3 on the nut plate and tighten down with a bolt, washer, and lock washer (Picture# 2).
3. Install Bracket # 4 on the pinch weld area, making sure that Bracket# 3 is perpendicular to the body of the truck (Picture# 2).
4. Align Bracket# 1 with Bracket# 3&4. Tighten down with 2 bolts, 4 washers, 2 lock washers, and 2 nuts (Picture# 2).

### C. REAR BRACKET



PICTURE# 1



PICTURE# 2

1. Locate existing oval hole on the side of the chassis before the rear wheel where the chassis starts to curve up (Picture# 1). Insert a nut plate, Bracket# 5, into the hole.
2. Install Bracket# 3 onto the nut plate with a bolt, washer, and lock washer.
3. Install Bracket # 4 on the pinch weld area, making sure that Bracket# 3 is perpendicular to the body of the truck (Picture# 2).
4. Align Bracket# 1 with Bracket# 3&4. Tighten down with 2 bolts, 4 washers, 2 lock washers, and 2 nuts (Picture# 2).