

INSTALLATION INSTRUCTIONS

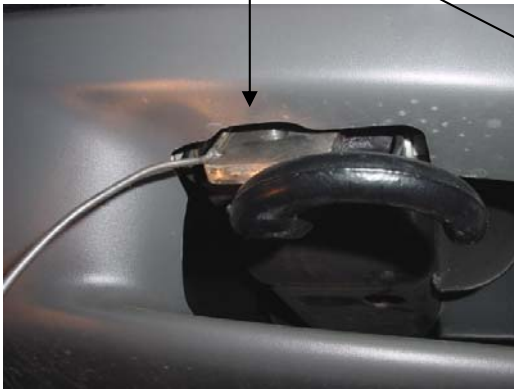
ONKI MODULAR AEGIS CENTER GUARD – PART # 462987A
00-02 GMC Sierra 1500
00-06 GMC Yukon/Yukon XL 1500

Parts List *(Please check that you have all the parts listed below before you start installing)*

Quantity	Brush guard installation hardware
2	Mounting brackets
2	1 ½" x 2 ½" threaded washer plates
10	M12X40 (19mm hex head bolts)
8	M12 Nylon lock nuts (19mm socket nuts)
20	½" SAE washers

Installation of Mounting Frame Brackets & Aegis Guard

1. Identify the left and right brackets to be used (D for driver side / P for passenger side).
2. Remove the factory bolt right behind the tow hook.
3. Insert the 1 ½" x 2 ½" mounting plate with the wire attached, enter from the front of the main frame to the existing 1 ¼" hole on the bottom of the main frame.



4. Insert bracket from behind the valance through the opening hole at the tow hook and attach to the bottom of the main frame. Align and mount the bracket to the bottom of the main frame, loosely reinstall removed factory bolt and the supplied M12X40 hex bolt and washer to the rear of the bracket thru the mounting plate.
5. Repeat step 2 thru 4 for the passenger side.
6. With the help of another person, align and position the Aegis Guard onto the installed brackets and securely tighten with the supplied M12X40 hex bolts, washers, and nuts.
7. Finally, make sure all nuts, bolts and brackets are tightened.