



NERF BOARD

Part #: 328085 VEHICLE BRACKETS CONFIGURATION (03/2009)

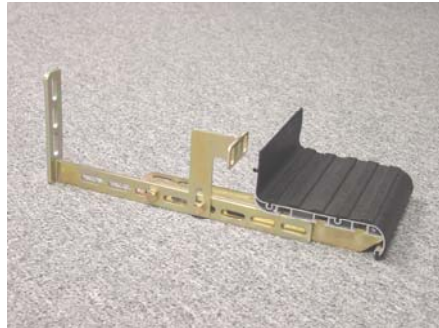
USE BRACKET # 1,2,3 FOR:

Ford

00-08 F-150 Super Crew 4Dr

Lincoln

02-08 Blackwood/Mark LT

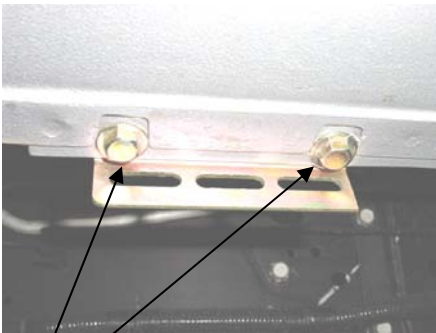


USE BRACKET # 1,2,4,5 OPTIONAL FOR:

Ford/Lincoln

00-08 F150 Super Crew

02-08 Blackwood/Mark LT



Use Bracket #4 cut it in half and mount it to the factory existing holes on the chassis



Position and mount bracket #2 to main frame.(check clearance before drilling, AC lines, brake lines Etc.,)



Attach and connect bracket #5 to bracket #2 and #4. Repeat to the remaining brackets installations.

Volkswagen

99-04 Euro Van



USE BRACKETS # 1,2,5 FOR:

Chevy/GMC/Pontiac/Oldsobile

04-06 Colorado/Canyon Crew Cab (w/o flares, wheel to wheel)



Nissan

04-06 Armada (w/o mud flap)

Toyota

00-06 Tacoma Double Cab (wheel to wheel)

95-06 Tacoma Ext Cab (wheel to wheel w/o flares)

