



AMERICAN RUNNER RUNNING BOARD

Part #: 128075 VEHICLE BRACKET CONFIGURATION (03/2009)

USE BRACKETS#1,2,3 FOR:

CHEVY

02-06 Avalanche (w/ body cladding)



USE BRACKETS # 1,2,5 FOR:

Dodge

98-03 Durango (w/ flares) **May require to trim bracket#2 forward to clear floor.*

98-03 Full Size Van (short wheel base) **May require bracket#4 for extension.*

Ford

07-09 Edge

90-01 Explorer 4Dr (w/o cladding)

Hyundai

07-08 Veracruz

Kia

07-08 Rondo

Mazda

07-08 CX9 (must remove underseal cover)

91-94 Navajo 4Dr (w/o cladding)

Mercury

02-08 Mountaineer (w/o cladding)

Pontiac

01-05 Aztek

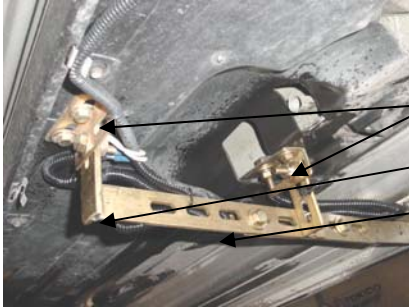
Suzuki

01-06 SL7

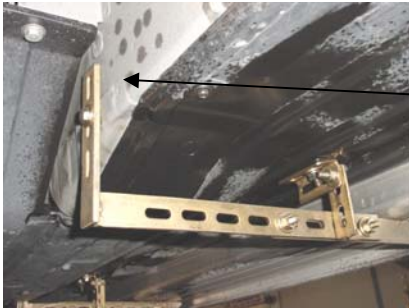
USE BRACKETS # 1,2,4,5 FOR:

BMW

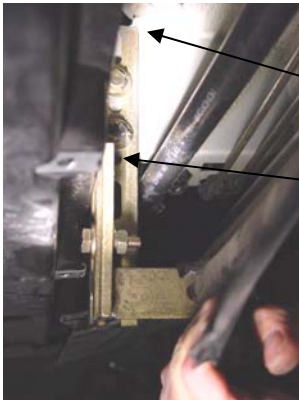
00-06 X5 *Installation tips: Trimming plastic panel on driver side rear is necessary in order to install brackets. Prepare to cut 2 pcs bracket#4 into 3 pieces each for later use.



Use bracket #1,2,5 and two pcs of the cut bracket #4 for the driver side front. Start with the driver side front. Cut 2 1/2" off from the bracket #2 for clearance. Align and mount 2 pieces of the cut bracket #4 to the bottom of the floor to create mounting point. Connect bracket #5 to the bracket #4 mounting point. Loosely attach bracket #2 to bracket #4 and #5. See picture. Repeat procedure on the passenger side front.



Use bracket #1,2,5 and one pc of the cut bracket #4 for the driver side center. Align and mount the cut bracket #4 to the bottom of the floor to create mounting point. Connect bracket #5 to the bracket #4 mounting point. Loosely attach and mount bracket #2 to the bottom floor vertical wall and connect to bracket #5. See picture. Repeat procedure on the passenger side center.



Use bracket #1,2,4,5 and one pc of the cut bracket #4 for the driver side rear. Align and mount the cut bracket #4 to the bottom of the floor to create mounting point. Remove under seal panel strip to get access to the cross member of the floor. See pictures. Locate 2 vertical holes on the cross member, attach and secure bracket #4 for mounting point extension. Connect bracket #5 to the mounting point. Loosely attach and mount bracket #2 to the mounting point extension and connect to bracket #5. See picture.

*Make sure to reinstall under seal panel strip by trimming the panel to clear the brackets..



Use bracket #1,2,5 and the cut bracket #4 for the passenger side rear. Align and mount cut bracket #4 to the bottom of the floor to create mounting point. Connect bracket #5 to the mounting point. Loosely attach and mount bracket #2 to the bottom floor vertical wall and connect to bracket #5. Trim plastic panel for clearance. See picture.

Finally, adjust running board to the desired position and secure all nuts and bolts.

USE BRACKET# 1,2,4 FOR:

Ford

99-08 F-250/F-350 Super Duty Super Cab

Pictures shown below are for F250 regular cab



Bracket #4 (cut to length) is mounted to the existing factory holes.