

# **INSTALLATION INSTRUCTIONS**

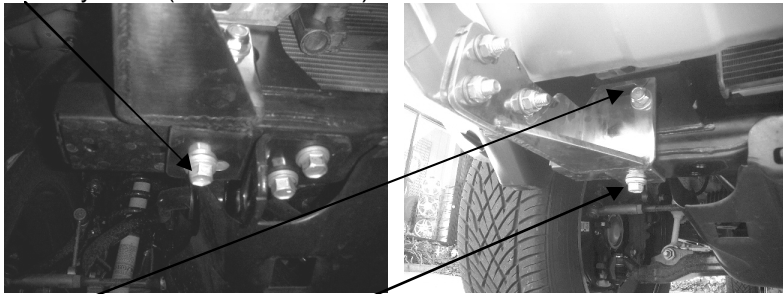
**ONKI MODULAR BRUSH GUARD – PART # 869822**  
**05-06 TOYOTA Tacoma V6 Regular/Access/Double Cab**

**Parts List** *(Please check that you have all the parts listed below before you start installing)*

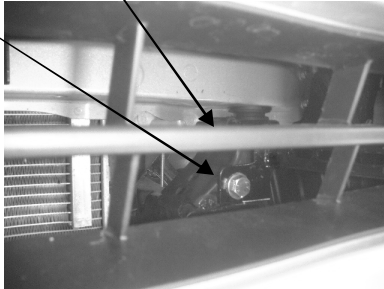
Quantity	Description
2	Mounting brackets
2	M12X115mm bolts
2	1 ½"X 1/4" washers
10	M12X40mm bolts
10	M12 Nylon lock nuts (19mm socket nuts)
20	½" washers
2	Support brackets
2	M10X1 ½" bolts
2	M10 nuts
4	3/8" washers

## Installation of Mounting Frame Brackets & Brush Guard

1. Identify left and right brackets to be used (D for driver side / P for passenger side).
2. Locate and remove 2 factory bolts (for reinstall later) at the bottom ends of the tow bar .



3. Attach and install D and P mounting brackets to the tow bar frame as shown above with the 2 supplied 115mm bolts thru the factory holes. Reinstall the 2 factory bolts thru the brackets to the threaded ends as shown.
4. Locate body mount towers. Attach and install L and R support brackets to the factory holes and fasten with the supplied M12 bolts and washers and nuts.



5. With the help of another person, align and install Brush Guard with the supplied M12 bolts, washers and nuts.
6. Align support brackets to the upright plates and fasten with the supplied M10 bolts, washers and nuts.

