

# INSTALLATION INSTRUCTIONS

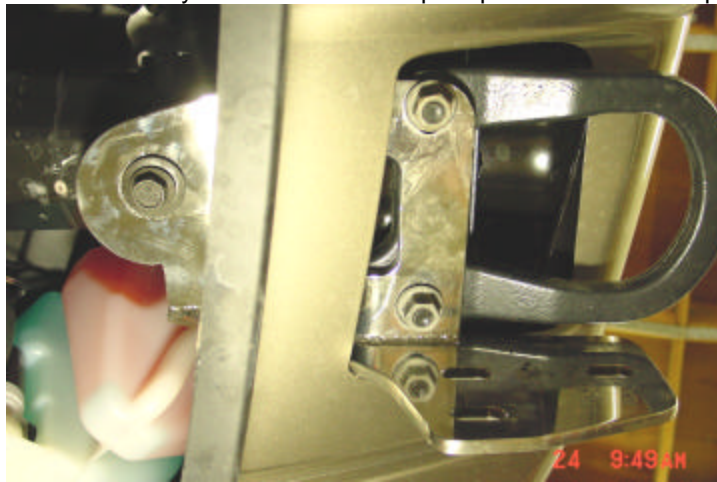
ONKI **MODULAR BRUSH GUARD** – PART #  
363648 04-06 DODGE Durango/Dakota

**Parts List** (Please check that you have all the parts listed below before you start installing)

Quantity	Brush guard installation hardware
2	Mounting brackets
2	Extended mounting brackets (for vehicle without tow hooks)
10	M12x1.75x40 (19mm hex head bolts)
10	M12 Nylon lock nuts (19mm socket nuts)
20	½" SAE washers

## Installation of Mounting Frame Brackets & Brush Guard

1. Identify mounting brackets to be used (D for driver side / P for passenger side).
2. **Vehicles equipped with tow hooks:** Install the mounting bracket under the tow hook by removing the 3 factory tow hook bolts and reinstall the factory tow hook bolts. Repeat procedure on the opposite.



3. **Vehicle without tow hooks:** Remove tow hook bracket (discard bracket) and install the supplied extended tow hook bracket with the factory bolts. Remove factory tow hook bolt in rear, install mounting bracket with factory tow hook bolt and the supplied bolts and nuts. Repeat the procedure on the opposite.



4. With the help of another person, hold and align the Brush Guard to the mounting brackets secure with supplied M12x40 hex bolts and washers.
5. Align the Brush Guard and secure all nuts, bolts, and brackets are tighten.