



NERF BOARD

Part #: 328068 VEHICLE BRACKETS CONFIGURATION (03/2009)

USE BRACKET # 1,2,3 FOR:

Chevy/GMC

83-02 S-10/S-15/Sonoma 2&3 Door Extended Cab

83-01 Jimmy 2 Door/Blazer 2 Drs.



USE BRACKET # 1,2,4 FOR

Chevy/GMC

90-05 Astro/Safari w/ rocker * *may require #4 for extension*

DRIVER SIDE SHOWN BELOW HERE



Ford

86-09 Ranger Ext Cab (Remove mud guard if equipped. See pictures below)



Picture shown the front bracket config.



Picture shown the 2nd, 3rd bracket config.



Driver side shown here

Hummer

03-8 H2 SUV/SUT

Isuzu

01-05 Axiom

Jeep

84-01 Cherokee 4 Door

06-08 Commander

92-08 Grand Cherokee



Mazda

86-06 B Series Ext Cab (Remove mud guard if equipped)



USE BRACKETS # 1,2,5 FOR:

Acura

01-08 MDX

07-08 RDX

96-98 SLX **may requires trimming brackets, *mount #5 on outside pinch weld.*

Chevy/GMC

04-09 Colorado/Canyon Extended Cab with flares

92-02 Sidekick/Tracker 4Drs. **mount #5 on outside pinch weld.*

Dodge

97-03 Dakota Club Cab (w/ flares)



2007 Dakota Club Cab

Ford

08-09 Escape

91-00 Explorer 2Dr (Will not fit Sport Limited w/ flares)

Honda

96-09 CRV

2009 Element

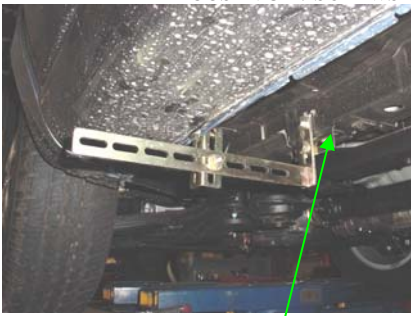


03-096 Pilot

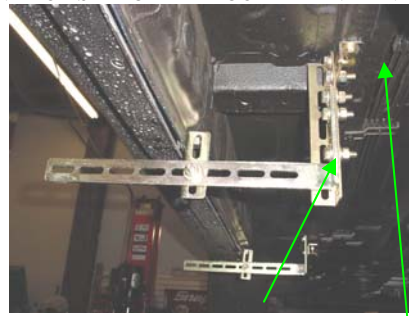
Hyundai

00-086 Santa Fe

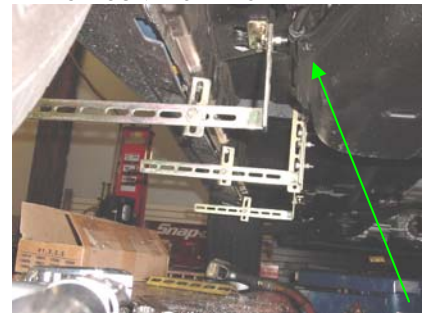
BRACKET AND WIRE INSTALLTIONS
REMOVE FACTORY MUD GUARD BEFORE INSTALLATION
LOOSEN UP 7 SCREWS ON EACH SIDE OF THE ROCKER PANEL IN ORDER TO MOUNT # 5 BRACKET



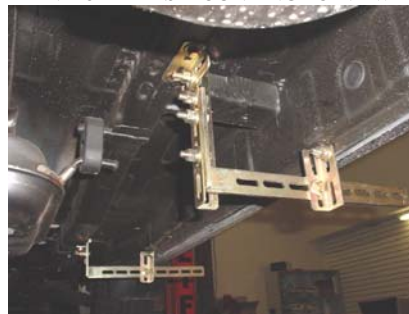
DR. FRT. CUT BRKT #2 BY 1.5" TO CLEAR



DR. CTR. CUT BRKT #4 TO LENGTH AND CREATES MOUNTING POINT WITH #5



DR.RR. USE #5 TO CREAT MOUNTING POINT



05-08 Tucson

Isuzu

01-05 Axiom

06-08 i280/i290 Extended Cab

92-04 Trooper *mount #5 on outside pinch weld.

Jeep

07-08 Compass
07-08 Liberty 4Dr
07-09 Patriot

Kia

98-08 Sportage



Bracket #2 not use in the bracket configuration.

Land Rover

02-05 Freelander
07-09 LR2

Lexus

03-09 RX330/400H

Mazda

86-06 B2000 Series Extended Cab (must remove mud guard if equipped)
07-08 CX7 (must remove underseal cover)
91-94 Navajo 2Dr
08-09 Tribute 4Dr

Mercedes

02-08 G Class

Mitsubishi

04-08 Endeavor
92-00 Montero 4Dr
98-03 Montero Sport **mount #5 on outside pinch weld.*



03-05 Outlander w/ cladding

Nissan

84-08 Pathfinder *mount #5 on outside pinch weld. Bracket #2 may be trimmed to fit.



04-08 Titan King Cab

98-086 X-Terra *mount #5 on outside pinch weld.

Saturn

02-06 Vue

Suzuki

06-08 Gran Vitara

Toyota

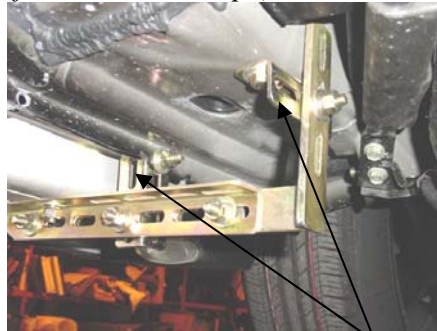
89-02 4 Runner *mount #5 on outside pinch weld.



01-076 Highlander (see pictures below for installation tips) 2 bracket sets per side are used on this vehicle.



Driver side front using #1,2,5 mounting brackets.



Passenger side rear using #1,2 and 2 # 5 brackets, Note: shorten bracket #2 by 1" to clear.



Optional: Driver side rear using #1,2,5. bent bracket and mounted to the floor.

91-97 Land Cruiser

95-06 Tacoma Standard Cab (w/ flares wheel-to-wheel)

95-06 Tacoma Extended Cab (Also fits standard cab wheel to wheel w/o flares)

00-06 Tundra Access Cab (w/ flares)



(Configuration to mount on outside pinch weld)