



**AR-S AMERICAN RUNNER STAINLESS RUNNING BOARD**  
**Part #: 128070S VEHICLE BRACKET CONFIGURATION (03/2009)**

**USE BRACKET#1,2,5 FOR:**

**Acura**

01-06 MDX (w/o mud guard)

**Chevy/GMC**

90-05 Astro/Safari (w/ rocker panel) *\*May require bracket#4 for extension.*

DRIVER SIDE SHOWN BELOW.



DOMELIGHT WIRE IS (-) BLUE, LOCATED ON THE DRIVER SIDE REAR PILLAR.  
PASSENGER SIDE SHOWN BELOW HERE



## **Dodge**

97-03 Dakota Club Cab (w/ flares)

## **Honda/Isuzu**

96-06 CR-V *\*Loosen under side cladding by removing plastic rivets to get access to mount bracket #5.  
Trim cladding to clear bracket when reinstalled.  
Cut approx. 4" on the bracket #2 on the shorter length to clear the bottom floor.*

01-05 Axiom (w/o mud guard) *\*Bracket# 1,2,4 are to be used for this vehicle.*



Picture of front bracket config.



Picture of mid & rear bracket config.



Driver side assembly shown above.

## **Hyundai**

05-08 Tucson

## **Isuzu**

06-08 i280/i290 Extended Cab

## **Jeep**

06-08 Commander

07-08 Compass

92-08 Grand Cherokee *\*Mount bracket#5 on outside pinch weld (see picture below).*

## **Kia**

03-08 Sportage *\*Mount bracket#5 on outside pinch weld (see picture below).*

## **Lexus**

03-09 RX330/350/400H

## **Mazda**

07-08 CX7 (must remove underseal cover)

## **Mercedes Benz**

02-08 G Class

## **Mitsubishi**

98-03 Montero Sport (w/o flares) *\*Mount bracket#5 on outside pinch weld (see picture below).*

92-00 Montero 4Dr *\*Mount bracket#5 on outside pinch weld (see picture below).*

**Nissan**

04-08 Titan King Cab

98-06 X-Terra (w/o mud flaps) \*Mount bracket#5 on outside pinch weld (see picture below).

**Saturn**

02-06 Vue

**Suzuki**

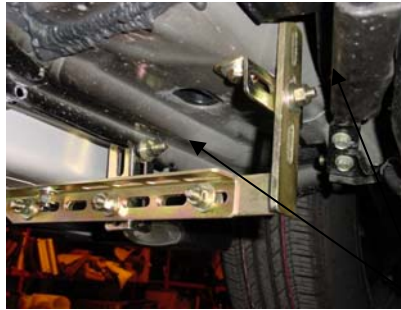
06-08 Grand Vitara

**Toyota**

01-06 Highlander (w/o mud guards) \*See pictures below. 2 brackets per side are used on this vehicle.



Driver side front using #1,2,5 mounting brackets.

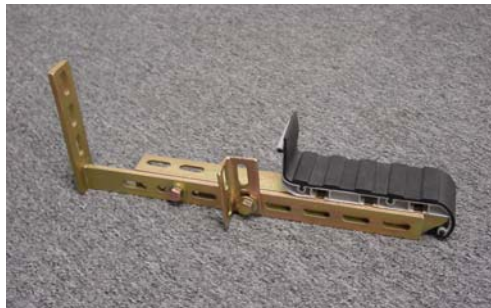


Passenger side rear using #1,2 and 2 #5 brackets, Note: shorten bracket #2 by 1" to clear.



Optional: Driver side rear using #1,2,5. bent bracket and mounted to the floor.

00-06 Tundra Access Cab (w/ flares)



Configuration to mount on outside pinch weld.