



## VOLCANO RUNNING BOARD

Part #: VOL078B / VOL078O

VEHICLE BRACKETS CONFIGURATION (03/2009)

USE BRACKET # 1,2,3 FOR:

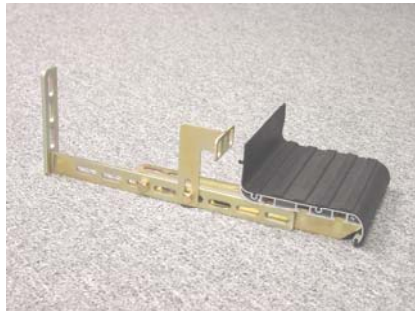
Chevy/GMC/Cadillac

02-09 Escalade

88-09 Silverado/Sierra 1500/2500/3500 2,3,4 Dr Ext Cab

95-09 Tahoe/Yukon 4Dr/Yukon Denali

2009 Traverse



01-05 S-10/Sonoma Crew Cab



Ford

04-09 F150 Super Cab

---

USE BRACKET # 1,2,4 FOR:

Chevy/GMC

90-05 Astro/Safari w/o cladding \* may require #4 for extension

DRIVER SIDE SHOWN BELOW.



## **Ford**

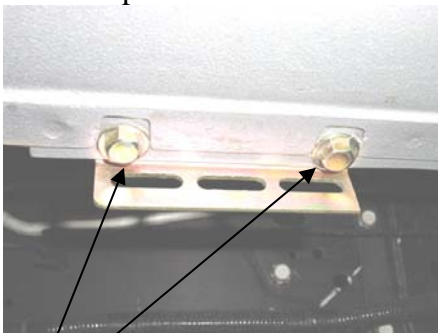
87-96 F Series Ext Cab

---

### **USE BRACKET # 1,2,4,5 OPTIONAL FOR:**

## **Ford**

97-09 Expedition



Use Bracket #4 cut it in half and mount it to the factory existing holes on the chassis



Position and mount bracket #2 to main frame.(check clearance before drilling, AC lines, brake lines Etc.,)



Attach and connect bracket #5 to bracket #2 and #4. Repeat to the remaining brackets installations.

---

### **USE BRACKET #1,2,5 FOR:**

## **BUICK**

2008 Enclave

04-07 Rainier

00-076 Rendezvous

## **CHEVY/GMC**

07-09 Acadia

04-09 Colorado/Canyon Crew Cab (w/o flares)

04-06 Colorado Crew Cab / Crew Cab Z71 (w/ flares)

04-08 Equinox

2000-Tahoe/Yukon: Optional with #4 bracket.

Using #4 bracket cut in half and mount on top to the existing hole of chassis, attach #5 bracket vertically to #4 bracket. Then attach #2 bracket to #5 bracket and extend to the main frame. Adjust to the design position mark and drill to main frame. Please check for clearance before drilling See picture below.

Repeat the procedures for the remaining brackets.

Pictures shown below are on the driver side.



Pictures shown below are on the passenger side with A/C lines.



### **Chrysler**

07-08 Aspen

03-08 Pacifica (low clearance)

### **Dodge**

00-08 Dakota Quad Cab 4Dr w/ flares

98-03 Durango w/o flares

04-09 Durango

2009 Journey

94-01 Ram Sport/club/Quad Cab

02-08 Ram Quad Cab SLT

2009 Ram Quad Cab

03-05 Sprinter Wagon 118" wheel base





## **Ford**

02-096 Explorer 4Dr

- 1, Remove bottom side rocker panel in order to install brackets.
- 2, Identify bracket #4 aligns and mounts to the existing holes horizontally against the bottom of the chassis.
- 3, Next, identify bracket #5 and attach it to the bracket #4 by using supplied bolts and nuts, do not tighten.
- 4, Next, identify bracket #2 and shorten the bracket length by 1 ½" is necessary, attach it to the bracket #5 and extend the bracket to the main frame.
- 5, With the door opened, mark and drill 1 hole on the main frame at the design location by holding the running board up where the rubber edge touches the bottom of the chassis and adjust running board.

(Note: before any Drilling, check and make sure there is absolutely no interfering wires, AC lines, brake lines, etc. in the drilling area.). Repeat step 2 through 5 for the remaining brackets.



## **Honda**

06-09 Ridgeline (w/ OEM mud guard)

## **Kia**

2009 Borrego

## **Lincoln**

07-08 Navigator

## **Mazda**

86-06 MPV \*may require trimming brackets.



## **Mercedes**

07-09 GL Class (special installation)

## **Mitsubishi**

2008 Raider Crew Cab

## **Nissan**

04-08 Armada

98-09 Frontier Crew Cab *\*may require cutting #1 & #2 to length, \*mount #5 on outside pinch weld.*

98-09 Frontier King Cab (wheel-to-wheel)

04-09 Titan Crew Cab 4Dr

## **Pontiac**

06-09 Torrent

## **Saturn**

07-08 Outlook

## **Suzuki**

2009 Equator Double Cab

07-08 XL-7

## **Toyota**

01-08 Sequoia

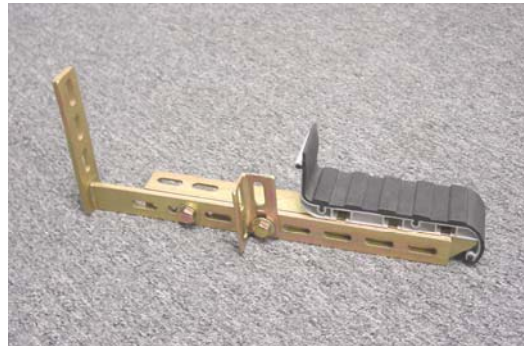
00-09 Tacoma Double Cab (Cab length)

95-06 Tacoma Ext. Cab (wheel to wheel w/ flares)

04-08 Tundra Double Cab



(Configuration to mount on inside pinch weld)



(Configuration to mount on outside pinch weld)