

# INSTALLATION INSTRUCTIONS

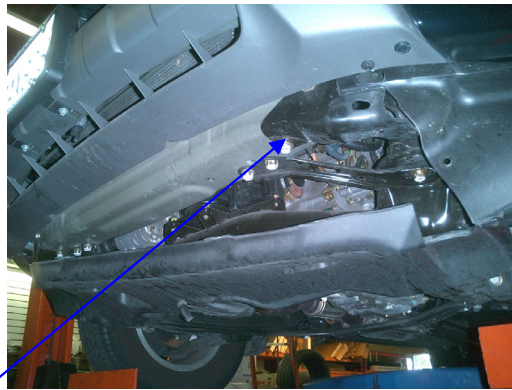
## AEGIS FRONT BAR – PART # 478747A 2006-11-HONDA RIDGELINE

Parts List *(Please check that you have all the parts listed below before you start installing)*

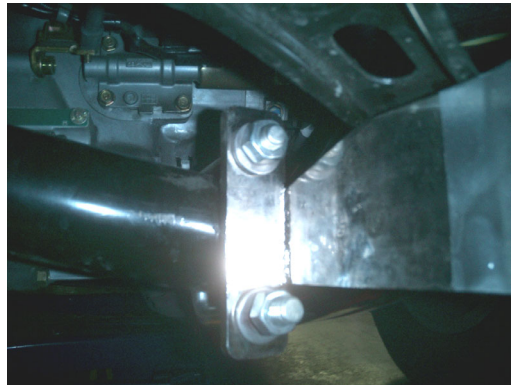
Quantity	Description
2	Mounting brackets
2	U-Bolts
6	M12X40 (19mm hex head bolts)
6	M12 Nylon lock nuts (19mm socket nuts)
16	½" Washers
2	M10X30 hex bolts

### Installation of Mounting Frame Brackets & Aegis Guard

1. Identify left and right brackets.
2. Remove bottom plastic panel.



3. Locate and remove factory M10 bolt on the outer of the cross member support bracket.
4. Install bracket with the supplied M10 bolt to the removed factory bolt location. With the rear bracket reaching the frame cross member tube, install supplied U-bolt, washers and nuts.



Picture shown on driver side.

5. Repeat procedure on the opposite side.
6. Install brush guard to brackets with supplied nuts and bolts and washers.
7. Adjust and securely tighten all bolts and nuts.
8. Mark plastic cover and trim to clear installed brackets.
9. Reinstall plastic cover.