

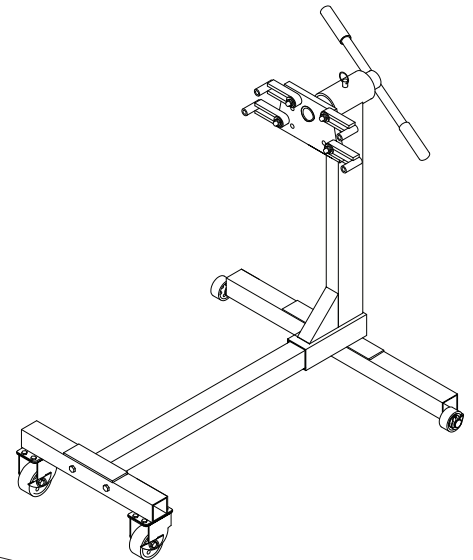
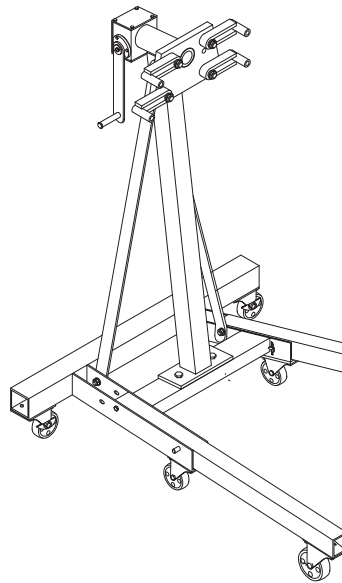
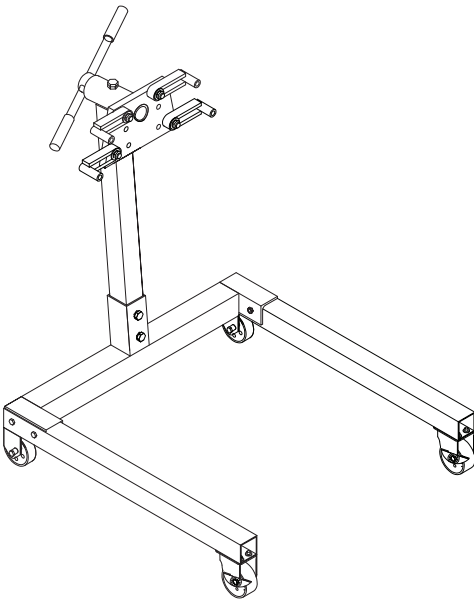
# Operating Instructions & Parts Manual

# OMEGALIFT™ EQUIPMENT

## Engine Stand and Foldable Engine Stand

Model  
30750  
31250  
31256 (w/ worm gear)

Capacity  
750 lb.  
1250 lb.  
1250 lb.



### **⚠ WARNING**

To avoid **crushing and related injuries**:



**NEVER** work on, under or around a load supported only by engine crane.  
**ALWAYS** use adequately rated engine stand.



This is the safety alert symbol. It is used to alert you to potential personal injury hazards. Obey all safety messages that follow this symbol to avoid possible injury or death.

**SFA Companies**

Read this manual and follow all the Safety Rules and Operating Instructions before using this product.

## **SAFETY and GENERAL INFORMATION**

**Save these instructions.** For your safety, read, understand, and follow the information provided with and on this engine stand before using. The owner and/or operator of this equipment shall have an understanding of engine stand and safe operating procedures before attempting to use. The owner and/or operator shall be aware that the use and repair of this product may require special skills and knowledge. Instructions and safety information shall be conveyed in the operator's native language before use of this engine stand is authorized. If any doubt exists as to the safe and proper use of this product, remove from service immediately.

**Inspect before each use.** Do not use if broken, bent, cracked, or damaged parts (including labels) are noted. Any engine stand that appears damaged in any way, operates abnormally or is missing parts, shall be removed from service immediately. If you suspect that the engine stand was subjected to a shock load (a load dropped suddenly, unexpectedly upon it), immediately discontinue use until it has been checked by a factory authorized service center (contact distributor or manufacturer for list of authorized service centers). It is recommended that an annual inspection be done by qualified personnel. Labels and owner's manuals are available from manufacturer.

## **PRODUCT DESCRIPTION**

This Engine Stand is designed to safely support a rated capacity engine during that time that the engine is being rebuilt or repaired.



**WARNING:** *Do not use this device for any purpose other than that for which it is expressly intended.*

## **SPECIFICATIONS**

Model	Capacity	Base Size (L x W)	Overall Height	Head Plate (L x H x Thickness)	Wheel Diameter
30750	750 lb.	31-1/2" x 31-1/2"	36-3/4"	10" x 6" x 3/8"	3"
31250	1250 lb.	33-3/8" x 33-7/8"	42-3/4"	(7-1/2" - 10-1/2") x 6-1/2" x 5/8"	3-1/2"
31256		41-3/4" X 23-5/8"	42-3/4"	(7-1/2" - 10-1/2") X 6-1/2" X 5/8"	

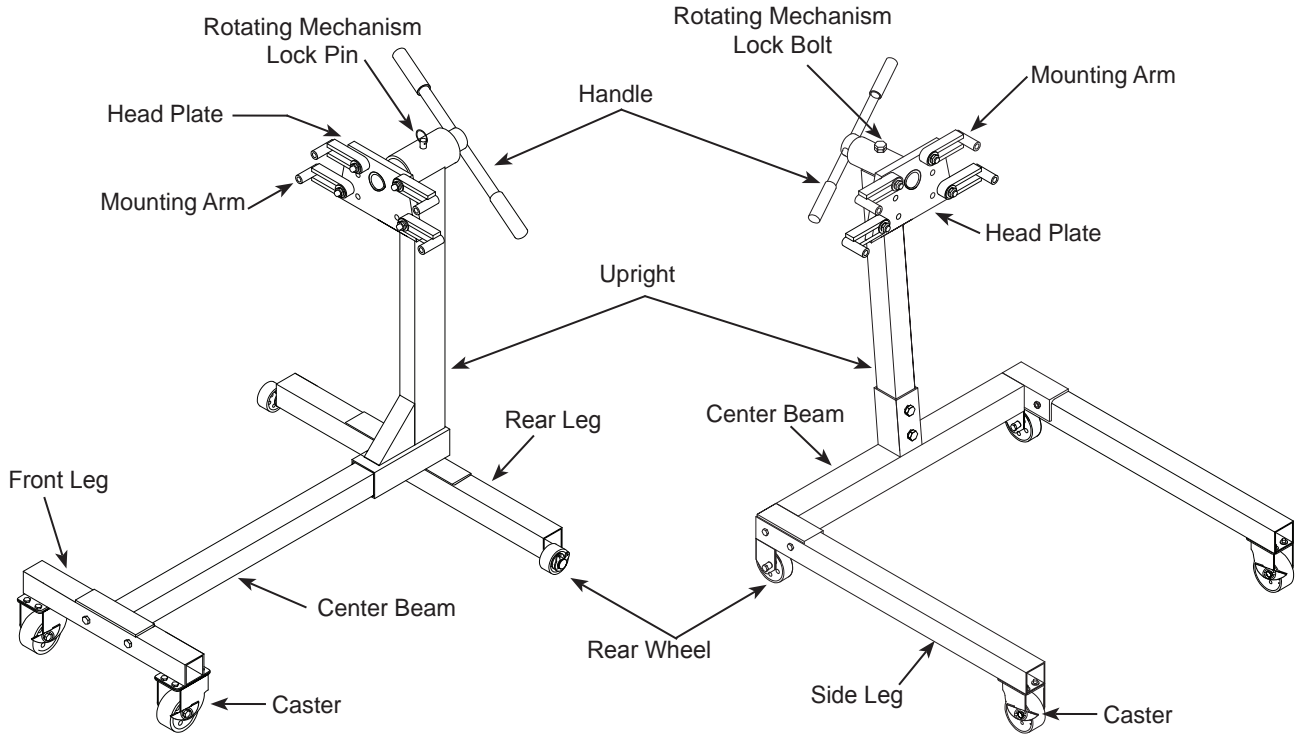


Figure 1 - Model 30750 Components

Figure 2 - Model 31250 Components

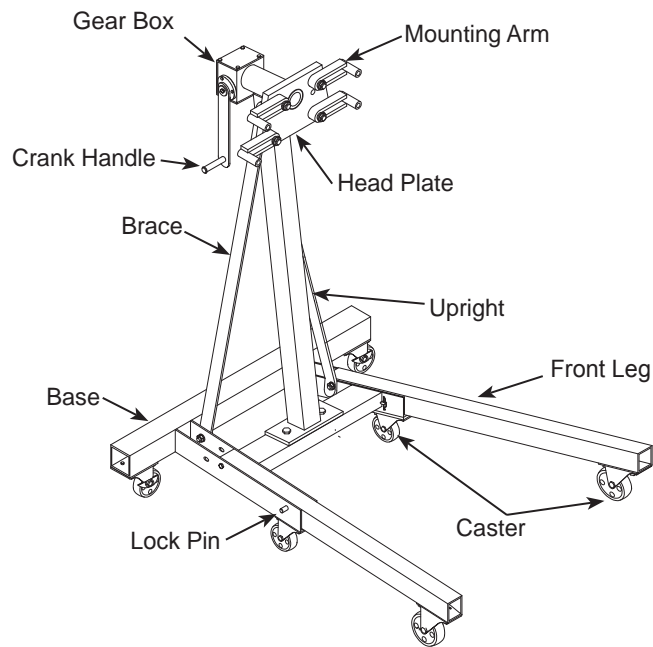


Figure 3 - Model 31256 Components

# ASSEMBLY

## Model 30750:

1. Attach caster (#13) to front leg (#14) with bolts, washers & and nuts (#15, 16 & 17).
2. Attach wheels (#12) to rear leg (#22) with washers & E-ring (#11 & 10).
3. Attach front leg (#14) to center beam (#21) with bolts, washers & nuts (#18, 19 & 20).
4. Attach upright (#27) and center beam (#21) to rear leg (#22) with bolts, flat washers, lock washers & nuts (#23, 24, 25 & 26) up from the bottom.
5. Slide head plate assembly (#9) into collar at top of upright (#27). Align holes and slide in lock pin (#3).
6. Attach all four mounting arms (#8) to head plate (#9) with bolts, flat washers, lock washers & nuts (#7, 6, 5 & 4) as shown. Mounting arms can be adjusted to most engines.
7. Insert handle (#2) into hole in head plate.
8. Place handle grip (#1) on each end of handle.

**Note:** Check all fasteners for tightness, tighten where required.

Size of Hardware Kits	Qty
4 -Nut M14	4
5 -Lock Washer M14	4
6 -Flat Washer M14	4
7 -Bolt M14x60	8
10 -E-ring M15	2
11 -Flat Washer M20	4
15 -Bolt M8x16	8
16 -Lock Washer M8	8
17 -Nut M8	8
18 -Bolt M10x70	2
19 -Lock Washer M10	2
20 -Nut M10	2
23 -Bolt M12x80	1
24 -Flat Washer M12	1
25 -Lock Washer M12	1
26 -Nut M12	1

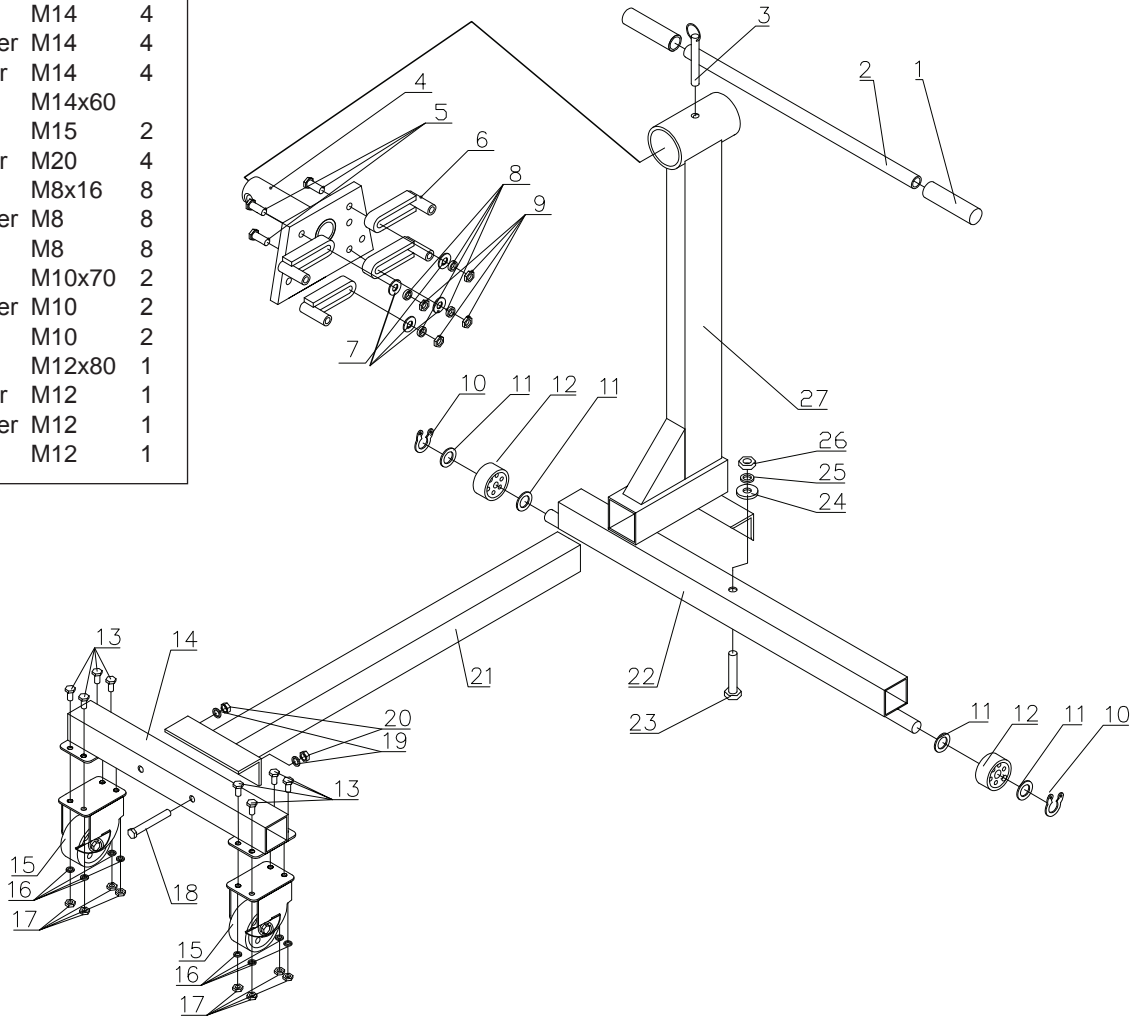


Figure 4 - Assembly Illustration for Model 30750

# ASSEMBLY

## Model 31250:

1. Attach wheel bracket (#15) to side leg (#24) with bolt, washer & nut (#19, 12 & 11) up from bottom.
2. Insert bushing (#20) into wheel (#21).
3. Attach wheel (#21) to bracket (#15) with bolt, washer & nut (#16, 17 & 18).
4. Attach caster (#22) to side leg with bolt & washer (#23 & 17).
5. Attach center beam (#25) to side legs (#24) with two bolts & washers (#14 & 13) each.
6. Attach upright (#7) to center beam (#25) with two bolts (#8).
7. Place head plate assembly (#6) into collar of upright (#7). Insert bolt (#8) to fasten head plate assembly.
8. Attach all four mounting arms (#4) to head plate (#6) with bolt, flat washer, lock washer & nut (#5, 3, 2 & 1) each.
9. Insert handle (#10) into hole of head plate assembly (#6). Place handle grip (#9) on each end of handle.

**Note:** Check all fasteners for tightness, tighten where required.

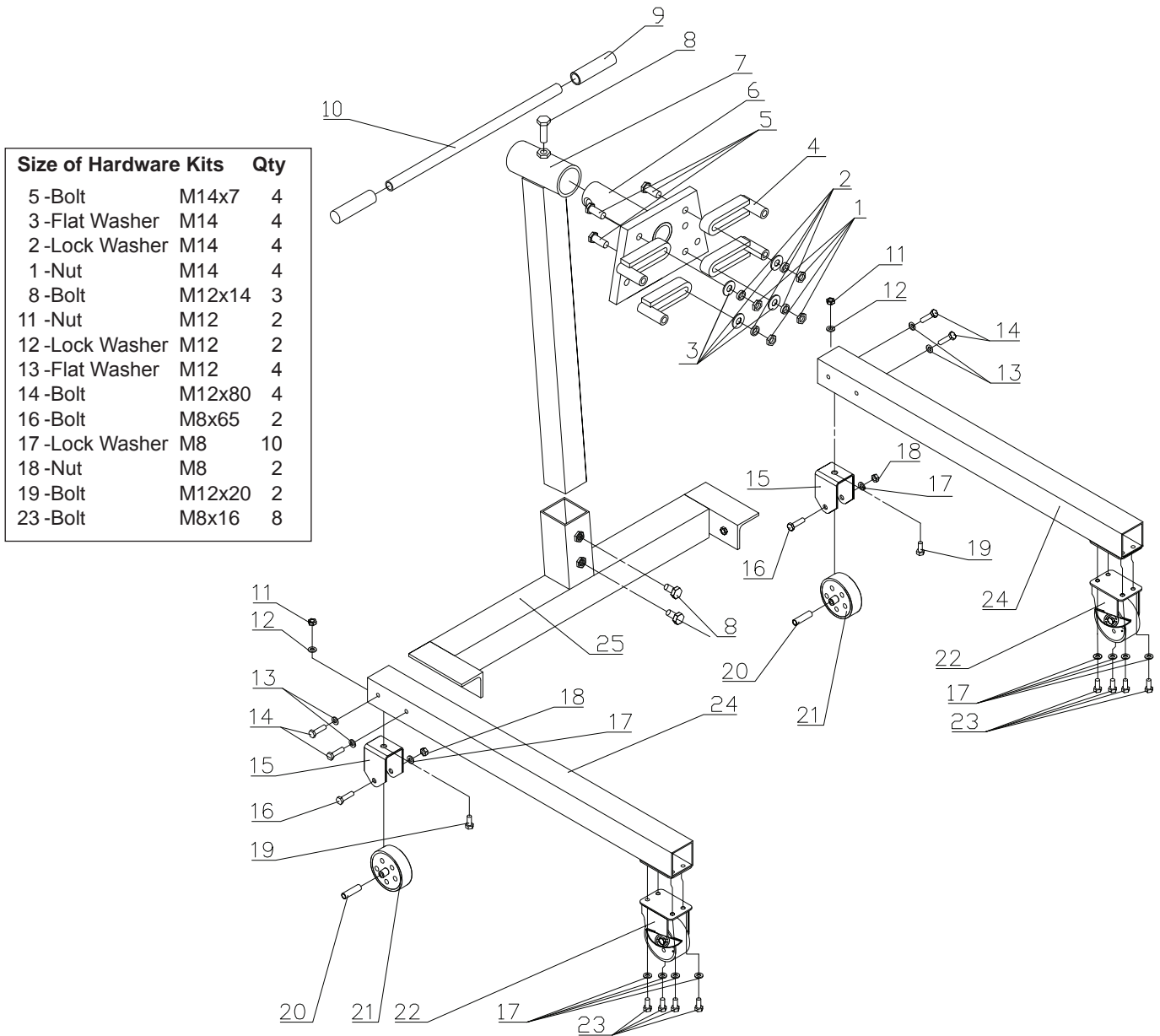


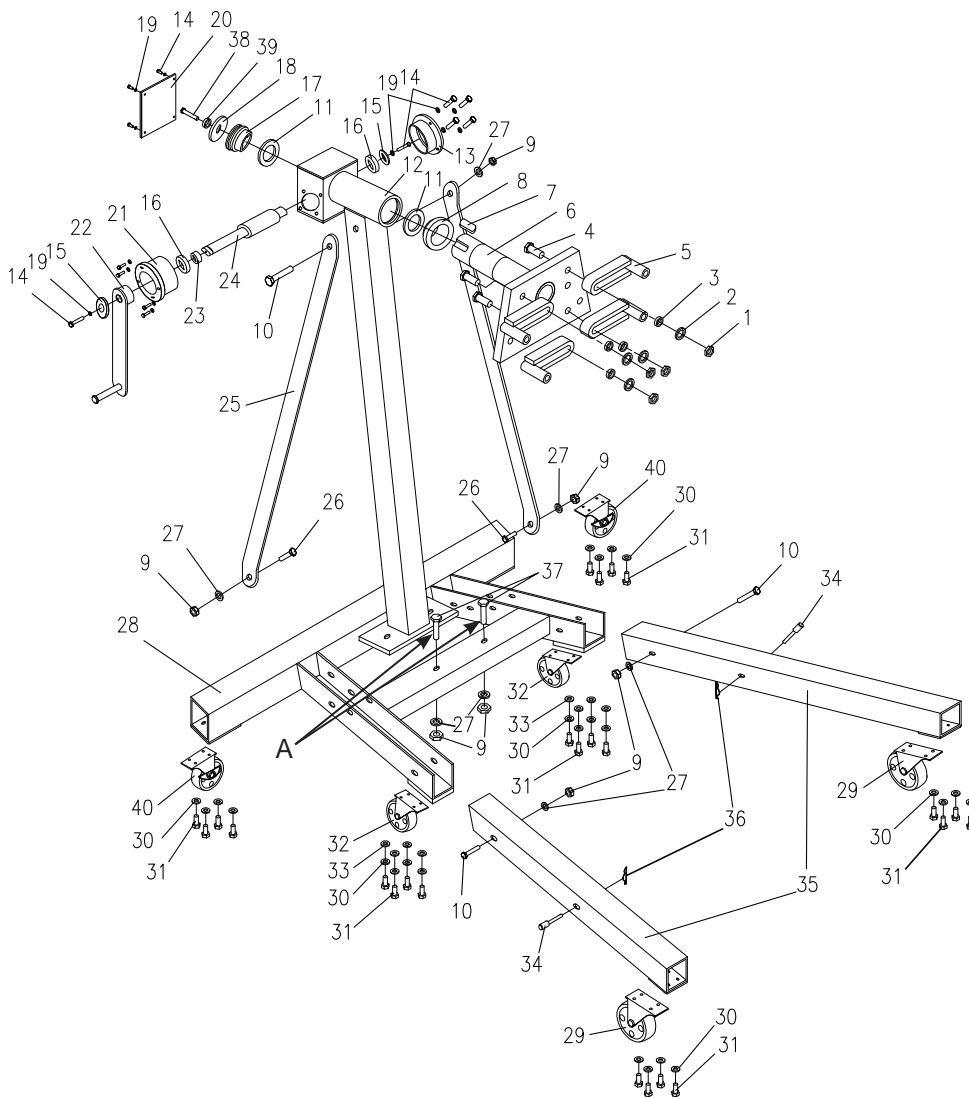
Figure 5 - Assembly Illustration for Model 31250

# ASSEMBLY

## Model 31256:

1. Attach four 3-1/2" casters (#29) to legs (#35) and base (#28) with bolts & washers (#31 & 30).
2. Attach two 3" casters (#32) to base (#28) with bolts, lock washers & flat washers (#31, 30 & 33).
3. Attach upright (#12) to the base (#28) with bolts, washers & nut (#37, 27 & 9). Hand tighten only.
4. Attach two of each braces (#25) to upright (#12) with one bolt, washer & nut (#10, 27 & 9). Attach the other end to the inside of base (#28) with two bolts, washers & nuts (#26, 27 & 9). Tighten all nuts.
5. Attach two legs (#35) to base (#28) with two bolts, washers & nuts (#10, 27 & 9). Insert bolts from outer part of base.
6. Align holes on legs (#35) and base (#28), then slide in lock pins (#34) and secure with cotter pins (#36).
7. Attach four mounting arms (#4) to the head plate (#6) with bolts, flat washers, lock washers & nuts (#5, 3, 2 & 1).
8. Insert handle (#22) to the gear box on upright (#12) and secure with bolt (#14) & flat block (#15).

**Note:** Check all fasteners for tightness, tighten where required.



Size of Hardware Kits		Qty
9 -Nut	M12	7
10 -Bolt	M12x85	3
14 -Bolt	M5x12	1
26 -Bolt	M12x25	2
27 -Lock Washer	M12	7
30 -Lock Washer	M8	24
31 -Bolt	M8x16	24
33 -Flat Washer	M8	8
37 -Bolt	M12x60	2

**To fold for storage:**

- a. Remove cotter pin (#36) and lock pin (#34) from both legs (#35).
- b. Carefully and slowly fold leg (#35) up.
- c. Slide lock pins (#34) into the front holes of the base (A) and secure with cotter pins (#36).

Figure 6 - Assembly Illustration for Model 31256

## BEFORE USE

1. Before using this product, read the owner's manual completely and familiarize yourself thoroughly with the product and the hazards associated with its improper use.
2. Verify that the product and the application are compatible.
3. Inspect engine stand before each use. Do not use if there are bent, broken or cracked components (including labels).
4. Ensure that casters/ wheels and adapter plate rotate freely. Check for and tighten any loose assemblies.

### **⚠️WARNING**

- **Study, understand, and follow all instructions** provided with/on this device **before use**.
- **Do not** exceed rated capacity.
- Use **only** on a hard, level surface.
- **Lock** head plate rotating mechanism **before applying load**.
- Use **only** hardened, appropriately sized bolts to secure engine to stand.
- Ensure engine is centered and secured to the head plate. Off-center loading may cause the engine to rotate unexpectedly and cause the loaded stand to tip over.
- Unlock and apply rotating mechanism slowly and carefully.
- Do not modify nor substitute hardware to this device.
- Only attachments and/ or adapters supplied by the manufacturer shall be used.
- Do not use the device for any purpose other than that for which it is intended.
- Model **31256** **does not** contain a rotating mechanism lock.  
**Extraordinary** care must be taken to ensure load does not rotate when using!
- **Failure to heed** these markings may **result in personal injury and/or property damage**.

### **⚠️WARNING**

To avoid **crushing and related injuries**:



**NEVER** work on, under or around a load supported only by engine crane.  
**ALWAYS** use adequately rated engine stand.

## OPERATION

**⚠️WARNING: ALWAYS** verify that the product and the application are compatible. **NEVER** load the engine stand with an engine that extends beyond an imaginary line drawn connecting the centerlines of the front and rear wheel/ caster axles as show in Fig 9.

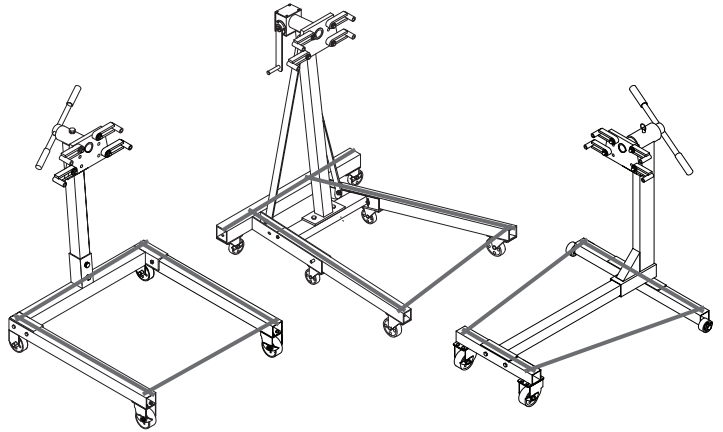


Figure 9 - Peripheral Loading Limit of Engine Stand

**⚠️WARNING: Ensure Lock pins** are installed and secured in front legs (as shown in fig. 1 & 2) before loading!

1. Ensure application is compatible with product.
2. Align engine with stand, then adjust mounting arms to match bell housing mounting bolt holes. For model 30750, 31250, rotational lock must be secure before applying load.
3. Carefully secure engine so that load is centered on stand. Secure with high strength stud bolts and flat washers. Ensure threads are compatible with your engine, and use washers on both sides of head plate.
4. To rotate engine slowly and carefully release locking mechanism. Use original handle to rotate, then secure by engaging lock mechanism (see Fig. 1 & 2). For model 31256, slowly and carefully engage the crank handle (see Fig. 8)
5. Check to ensure stand is secure before working on or around stand. Never work under loaded stand.

**NOTICE: Use only the handle** provided by the manufacturer. The handle provided with this stand will safely engage and operate the head plate. If the handle is worn, bent, or otherwise damaged, **STOP**, discontinue use of the stand until a factory replacement handle assembly can be acquired.

## MAINTENANCE

Periodically inspect each stand. Ensure all parts move freely. Lubricate the casters periodically. To help prevent rust, wipe clean after each use.

**⚠️WARNING: Paint contains lead!**  
**DO NOT sand or grind painted surface!**

## Storage

Store the engine stand in clean, dry environment.



# REPLACEMENT PARTS

(page 9 & 12)

Not all components of the engine stand are replacement items, but are illustrated as a convenient reference of location and position in the assembly sequence. When ordering parts, give Model number, serial number and parts description.

## Model 30750

Item	Part#	Description	QTY
1	T940-03003-000	Handle Grips	2
2	T093-00002-000	Handle	1
3	T093-04000-000	Lock Pin Assy	1
4	T093-10000-000	Head Plate Assy	1
5	5101-14070-000	HCS M14x70	4
6	T084-05000-000	Mounting Arms	4
7	5302-00014-000	Big Spacer 14	4
8	5303-00014-000	Spring Washer 14	4
9	5202-00014-000	HEX NUT M14	4
10	5305-00015-000	E-Ring 15	2
11	5301-00020-000	Spacer 20	4
12	T093-00001-000	Wheel	2
13	5102-08018-000	HCS M8x18	8
14	T093-06000-000	Front Leg	1
15	T093-08000-000	3" Caster Wheel Assy	2

16	5303-00008-000	Spring Washer 8	8
17	5202-00008-000	HEX NUT M8	8
18	5101-10070-000	HCS M10x70	2
19	5303-00010-000	Spring Washer 10	2
20	5202-00010-000	HEX NUT M10	2
21	T093-07000-000	Support Leg Assy	1
22	T093-01000-000	Rear Leg Assy	1
23	5101-12080-000	HCS M12x80	1
24	5302-00012-000	Big Spacer 12	1
25	5303-00012-000	Spring Washer 12	1
26	5202-00012-000	HEX NUT M12	1
27	T093-30000-000	Main Post Assy	1

\* Hardware kit includes nuts, bolts, and washers.

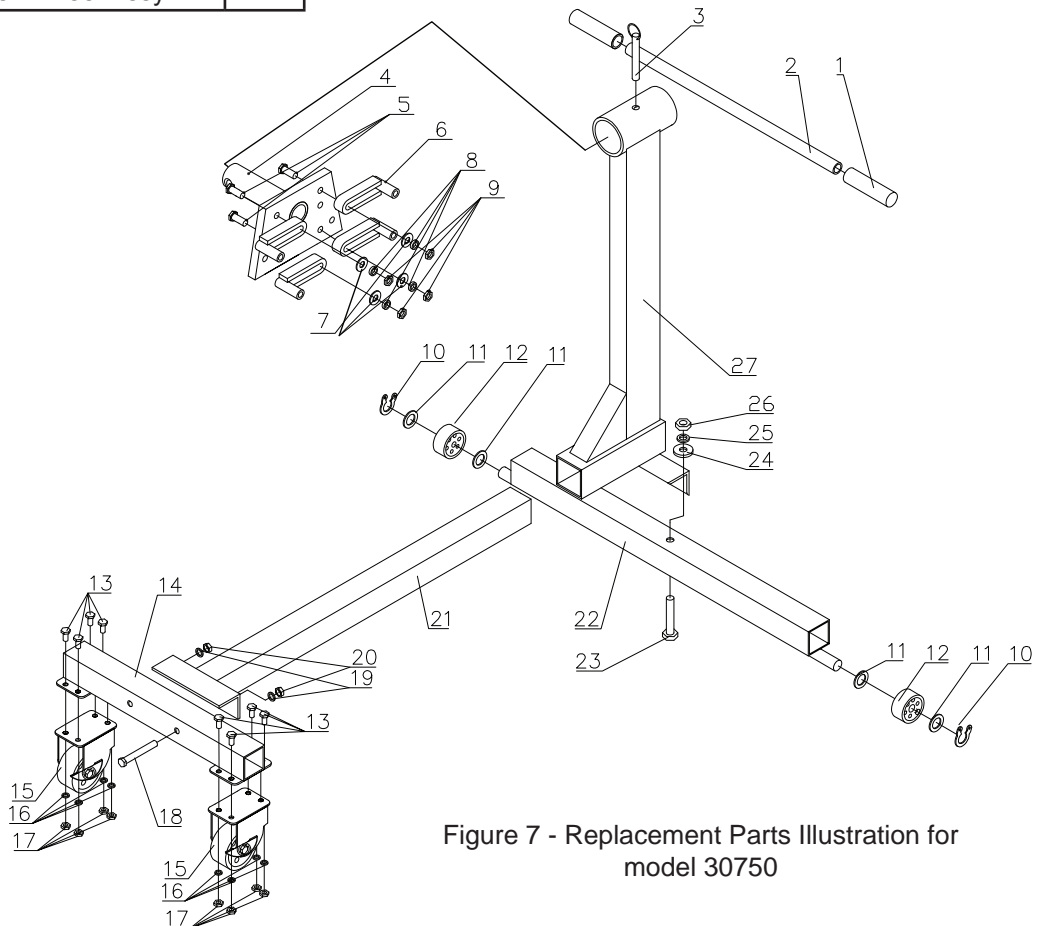


Figure 7 - Replacement Parts Illustration for model 30750



**Model 31250**

Item	Part#	Description	QTY
1	5202-00014-000	HEX NUT M14	4
2	5303-00014-000	Spring Washer 14	4
3	5302-00014-000	Big Spacer 14	4
4	T084-05000-000	Mounting Arms	4
5	5101-14070-000	HCS M14x70	4
6	T084-04000-000	Head Plate Assy	1
7	T084-02000-000	Post Assy	1
8	5101-12025-000	HCS M12x25	3
9	T940-03003-000	Handle Grips	2
10	BL80-20001-000	Handle	1
11	5202-00012-000	HEX NUT M12	2
12	5303-00012-000	Spring Washer 12	2
13	5301-00012-000	Spacer 12	4

14	5103-12080-000	HCS M12x80	4
15	T084-00001-000	Wheel Frame	2
16	5101-08065-000	HCS M8x65	2
17	5303-00008-000	Spring Washer 8	10
18	5202-00008-100	HEX NUT M8	2
19	5101-12020-000	HCS M12x20	2
20	T084-00002-000	Pipe	2
21	T084-00003-000	Wheel	2
22	T084-06000-000	3-1/2" Caster Wheel Assy	2
22	T084-30000-000	3-1/2" Caster Wheel Assy	2
23	5102-08018-000	HCS M8x18	8
24	T084-09000-000	Front Leg Assy	2
25	T084-08000-000	Main Frame Assy	1

\* Hardware kit includes nuts, bolts, and washers.

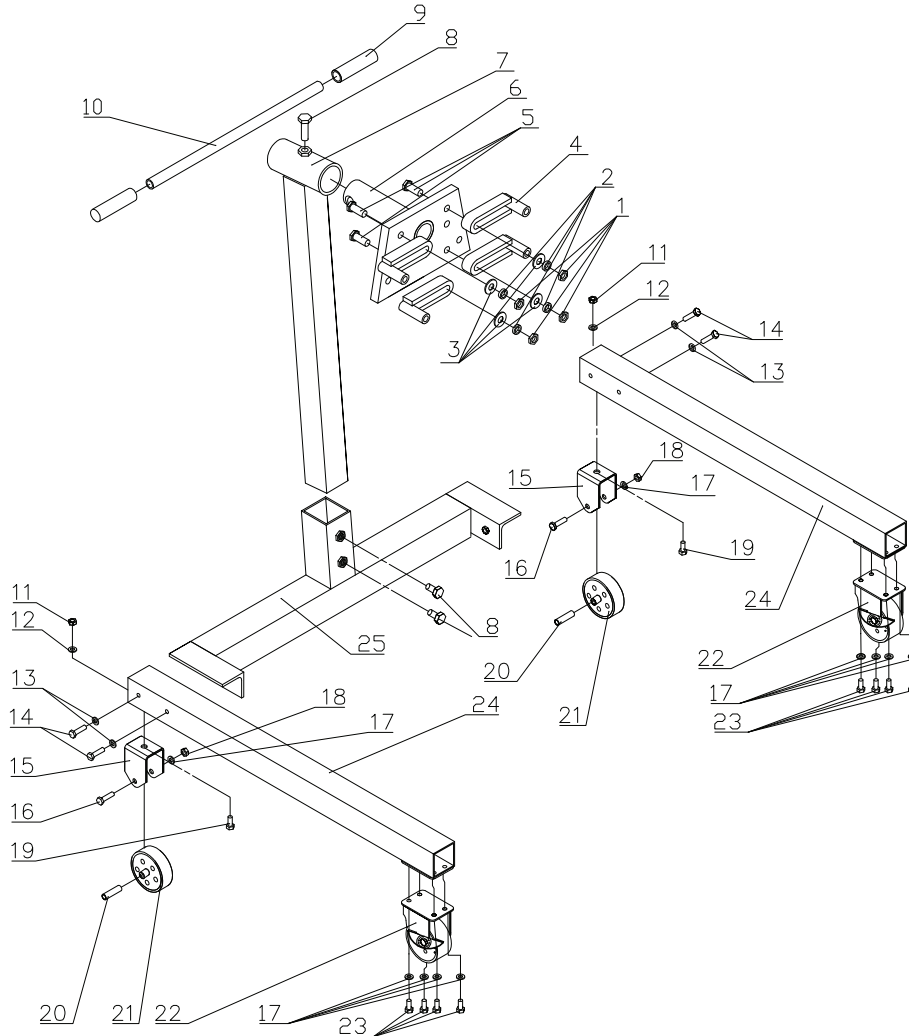


Figure 8 - Replacement Parts Illustration for model 31250

**Model 31256**

Item	Part#	Description	QTY
1	5202-00014-000	Hex nut M14	4
2	5302-00014-000	Big Spacer 14	4
3	5303-00014-000	Spring washer 14	4
4	5101-14070-000	Hcs M14x70	4
5	T084-05000-000	Mounting arms	4
6	T096-01100-000	Head Plate Assy	1
7	T096-01004-000	Key	1
8	T096-01006-000	Pipe	1
9	5202-00012-000	Hex Nut M12	7
10	5101-12085-000	Hcs M12x85	3
11	5602-40068-000	Bearing d40xD68	2
12	T096-01300-000	Main post assy	1
13	T096-01008-000	Sheath	1
14	5102-05016-000	Hcs M5x16	14
15	T096-01010-000	Cover	2
16	5602-17040-000	Bearing d17xD40	2
17	T096-01005-000	Worm wheel	1
18	T096-01003-000	Cover	1
19	5303-00005-000	Spring Washer 5	14
20	T096-01002-000	Case cover	1
21	T096-01007-000	Press lid 1	1
22	T096-01200-000	Handle group	1
23	T096-01001-000	Small adjustable tray	1
24	T096-01009-000	Worm	1

25	T096-00001-000	Strengthen pole	2
26	5101-12025-000	Hcs M12x25	2
27	5303-00012-000	Spring Washer 12	7
28	T095-01000-000	BACK-UP assy	1
29	T084-06000-000	31/2" Caster Wheel Assy	2
30	5303-00008-000	Spring Washer 8	24
31	5102-08018-000	Hcs M8x18	24
32	T093-08000-000	3" Caster Wheel Assy	2
33	5301-00008-000	Spacer 8	8
34	T095-00002-000	Pin	2
35	T095-03000-000	Front leg	2
36	T474-00007-000	Pin	2
37	5101-12060-000	Hcs M12x60	2
1	5102-06020-000	Hcs M6x20	1
38			
2	5102-12025-000	Hcs M12x25	1
1	5303-00006-000	Spring Washer 6	1
39			
2	5303-00012-000	Spring Washer 12	1
40	T084-30000-000	31/2" Caster Wheel Assy	2

\* Hardware kit includes nuts, bolts, and washers.

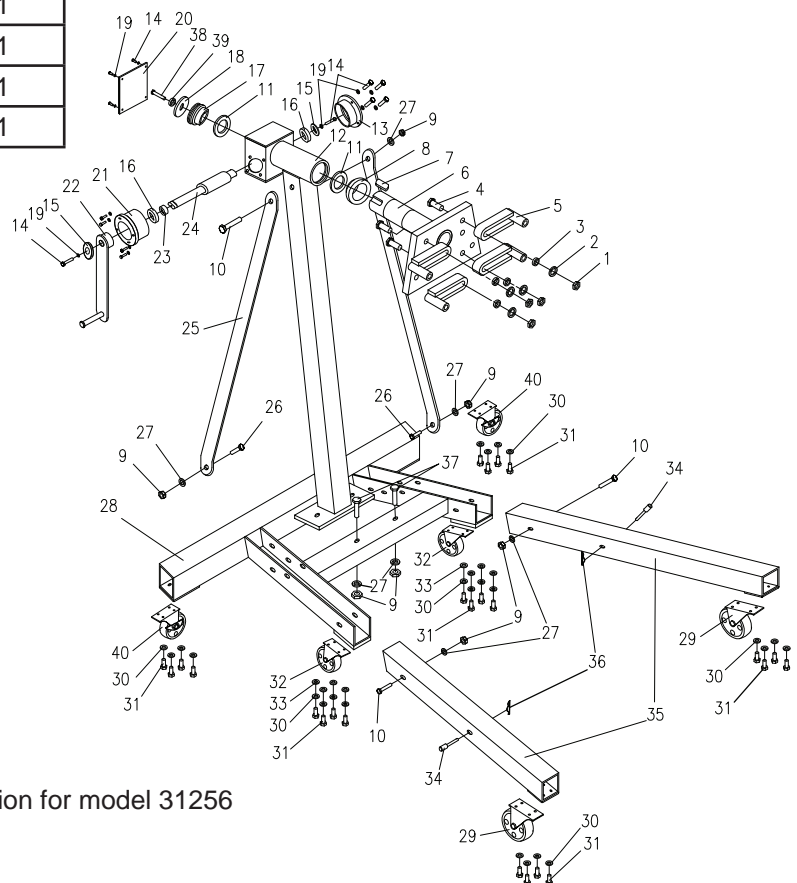


Figure 10 - Replacement Parts Illustration for model 31256

## ONE YEAR LIMITED WARRANTY

For a period of one (1) year from date of purchase, **SFA Companies** will repair or replace, at its option, without charge, any of its products which fails due to a defect in material or workmanship under normal usage. This limited warranty is a consumer's exclusive remedy.

Except where such limitations and exclusions are specifically prohibited by applicable law, (1) THE CONSUMER'S SOLE AND EXCLUSIVE REMEDY SHALL BE THE REPAIR OR REPLACEMENT OF DEFECTIVE PRODUCTS AS DESCRIBED ABOVE. (2) **SFA Companies** SHALL NOT BE LIABLE FOR ANY CONSEQUENTIAL OR INCIDENTAL DAMAGE OR LOSS WHATSOEVER. (3) ANY IMPLIED WARRANTIES, INCLUDING WITHOUT LIMITATION THE IMPLIED WARRANTIES OF MERCHANTABILITY AND FITNESS FOR A PARTICULAR PURPOSE, SHALL BE LIMITED TO ONE YEAR, OTHERWISE THE REPAIR, REPLACEMENT OR REFUND AS PROVIDED UNDER THIS EXPRESS LIMITED WARRANTY IS THE EXCLUSIVE REMEDY OF THE CONSUMER, AND IS PROVIDED IN LIEU OF ALL OTHER WARRANTIES, EXPRESS OR IMPLIED. (4) ANY MODIFICATION, ALTERATION, ABUSE, UNAUTHORIZED SERVICE OR ORNAMENTAL DESIGN VOIDS THIS WARRANTY AND IS NOT COVERED BY THIS WARRANTY.

Some states do not allow limitations on how long an implied warranty lasts, so the above limitation may not apply to you. Some states do not allow the exclusion or limitation of incidental or consequential damages, so the above limitation or exclusion may not apply to you. This warranty gives you specific legal rights, and you may also have other rights, which vary from state to state.

