

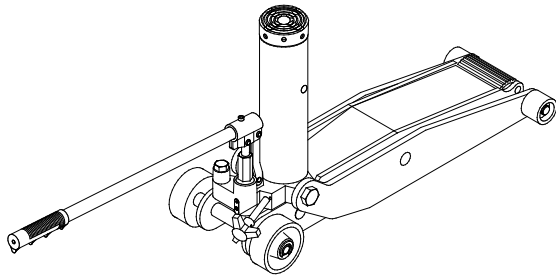
# Operating Instructions & Parts Manual



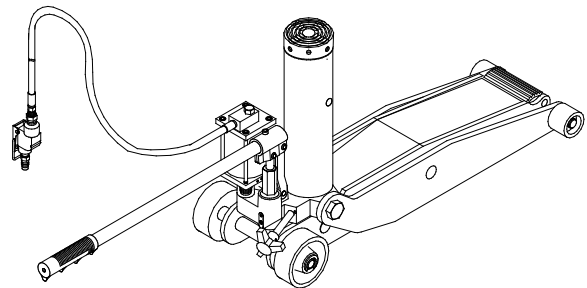
## Forklift Jack

**Model**  
**28045**  
**28047** (*Air option*)

**Capacity**  
**4 Ton**  
**4 Ton**



Model 28045




Model 28047



This is the safety alert symbol. It is used to alert you to potential personal injury hazards. Obey all safety messages that follow this symbol to avoid possible injury or death.

**⚠ WARNING**

To avoid **crushing** and related injuries:



**NEVER** work on, under or around a load supported only by a hydraulic forklift jack. **ALWAYS** use adequately rated forklift stands.

SFA Companies

Read this manual and follow all the Safety Rules and Operating Instructions before using this product.

## SAFETY and GENERAL INFORMATION

**Save these instructions.** For your safety, read, understand, and follow the information provided with and on this jack before using. The owner and operator of this equipment shall have an understanding of this jack and safe operating procedures before attempting to use. The owner and operator shall be aware that use and repair of this product may require special skills and knowledge. Instructions and safety information shall be conveyed in the operator's native language before use of this jack is authorized. If any doubt exists as to the safe and proper use of this jack, remove from service immediately.

**Inspect before each use.** Do not use if broken, bent, cracked or damaged parts are noted. Any jack that appears damaged in any way, or operates abnormally shall be removed from service immediately. If the jack has been or suspected to have been subjected to a shock load (a load dropped suddenly, unexpectedly upon it), immediately discontinue use until jack has been checked by a factory authorized service center (contact distributor or manufacturer for list of authorized service centers). It is recommended that an annual inspection be done by qualified personnel. Labels and Operator's Manuals are available from manufacturer.

## PRODUCT DESCRIPTION

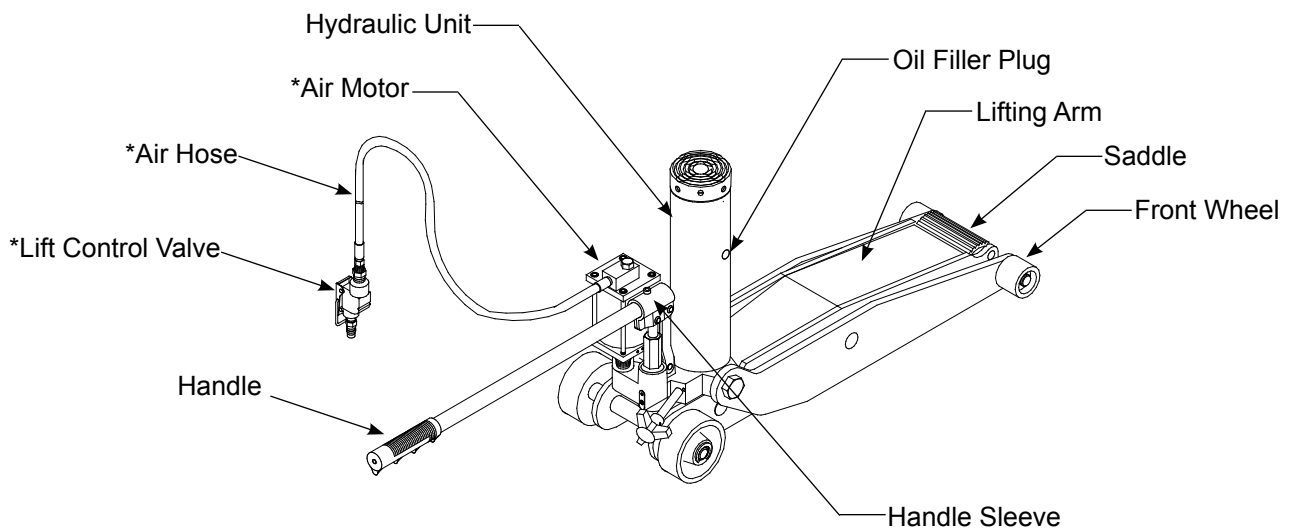
Hydraulic Forklift Jack is designed to lift, not support, one side of a rated capacity forklift. Immediately after lifting, forklift must be supported by a pair of appropriately rated forklift stands. Air option unit requires at least 7.8 CFM @ 110 - 175 PSI.



**WARNING:** *Never use hydraulic jack as a stand alone device. After lifting, immediately support the lifted forklift with a pair of appropriately rated forklift stands.*

## SPECIFICATIONS

Model	Capacity	Jack Size (L x W)	Min. Height	Max. Height	Hydraulic Lift
28045	4 Ton	29-3/4" x 10"	2-1/8"	17-1/8"	15"
28047					



(\*) available on air option model 28047 only

Figure 1 - Typical Forklift Jack Nomenclature (28047 shown)

## PREPARATION

### Assembly (refer to Fig. 2)

1. Attach ram plunger(1) to the swivel block(2). Insert cotter pin(3) through the hole on swivel block and spread ends of the cotter pin to secure the ram to the swivel block.
2. Insert handle(4) to handle sleeve(5) and secure with provided bolt (6).

### Before Use

1. Verify that the product and application are compatible.
2. Before using this product, read the operator's manual completely and familiarize yourself thoroughly with the product, its components and recognize the hazards associated with its use.
3. To familiarize yourself with basic operation, locate and turn the release valve knob:
  - a. *Clockwise* until firm resistance is felt to further turning. This is the '**CLOSED**' release valve position used to **raise** the saddle.
  - b. *Counter-clockwise*, but no more than 1/2 turn from the closed position. This is the '**OPEN**' release valve position used to **lower** the saddle.
4. With saddle fully lowered and release valve closed, pump the operating handle. If lift arm responds immediately, jack is ready for use. If jack does not respond, open release valve and pump 6 to 8 full strokes to purge air. Close release valve and recheck operation.
5. For air option model 28047, Pour a teaspoon of good quality, air tool lubricant into the air supply inlet of the lift control valve. Connect to air supply and operate for 3 seconds to evenly distribute lubricant.

**Note:** These models are equipped with the popular 1/4" NPT air coupler. When installing a different air coupler of your choice, ensure that thread tape or compound is used when servicing connections. To ensure dependable, trouble free operation an inline air dryer and oiler is recommended.
6. Ensure that jack rolls freely. Raise and lower the unloaded saddle throughout the lifting range before putting into service to ensure the pump operates smoothly. Replace worn or damaged parts and assemblies with Omega authorized replacement parts only.

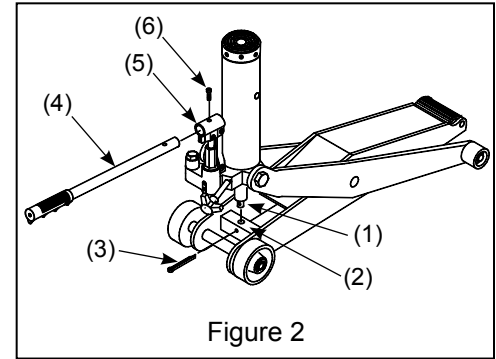


Figure 2

### Bleeding / Venting Trapped Air

With the release valve in the OPEN position (3b.) and with saddle fully lowered, locate and remove the oil filler plug. Pump 6 to 8 full strokes. This will help release any pressurized air which may be trapped within the reservoir. Reinstall the oil filler plug.

### Safety Information

1. The jack is used to lift from the side of the forklift. However, two wheels of the lift must remain firmly on the floor.
2. Use extreme caution when lifting narrow forklift (less than 40" wide) from the sides. Always make sure that the height between the floor and the bottom of the raised tire is never more than one fourth (1/4th) of the vehicle's tread width. See figure 3. (tread width is measured from centerline to centerline of the tire treads.) If the one fourth figure is exceeded, the forklift could reach the point of instability and tip over or the angularity of the forklift frame could cause the jack to kick out and drop the load. Example: If tread width = 36", then never lift the bottom of the vehicle tire more than 9" off the floor.
3. Do not use the jack to raise all four wheels of the forklift from the floor. Two wheels of the lift must remain in contact with the floor at all times.
4. Do not use any kind of "cribbing" under the jack, or on top of the lift pad area. The jack must always remain in direct contact with the floor, and the lifting pad or notch must be in direct contact with the fork lift.
5. The jack is designed solely for the lifting of forklift. Use of the jack for any other purpose constitutes misuse of the jack.

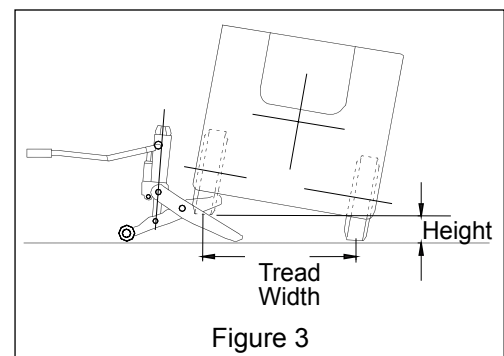


Figure 3

**⚠ WARNING**

- **Study, understand, and follow** all printed materials provided with/on this product **before use**.
- **Do not** exceed rated capacity.
- Use **only** on hard, level surface.
- **This is a lifting device only! Immediately** after lifting, support the forklift with a **pair** of appropriately rated forklift stands.
- Position jack perpendicular to the forklift such that the load is balanced by the remaining two wheels in contact with surface.
- Only attachments and/ or adapters supplied by the manufacturer shall be used.
- **Do not** move or **dolly** the **vehicle** while on the jack.
- No alterations shall be made to this product.

**FAILURE TO HEED THESE MARKINGS MAY RESULT IN PERSONAL INJURY AND/OR PROPERTY DAMAGE**


**⚠ WARNING**



To avoid **crushing and related injuries**:

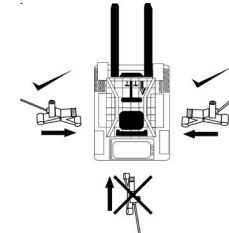
- **Never** work on, under or around a load supported only by hydraulic forklift jack.
- **Always** use adequately rated forklift stands.
- Keep hands, feet and all other body parts out of the area of the scissors mechanism at all times.
- **Do not** use this device to lift, level, lower, support nor move a house, mobile home, travel trailer, camper or any building structure.
- **Be alert** and **sober** when using this product. Do not operate under the influence of drugs or alcohol.

**⚠ WARNING**



Never lift from either end of forklift

**⚠ WARNING**



Lift **only** on areas of the forklift as specified by the forklift manufacturer.

## OPERATION

### Lifting

**⚠ WARNING:** *Ensure hydraulic unit does not contact vehicle during lift event.*

1. Follow the vehicle manufacturer's recommended guidelines for lifting. Engage the emergency brake and chock each unlifted wheel in both directions to prevent inadvertent vehicle movement.
2. Close the release valve by turning it clockwise until firm resistance is felt.
3. Verify lift point, center jack saddle under lift point.
4. Squeeze the lift control valve (*model 28047 only*) or insert handle into handle sleeve and pump to contact lift point. To lift, continue pumping until load reaches desired height.

**NOTE:** *for model 28047, DO NOT operate by air and by hand pumping at the same time.*

5. Transfer the load **immediately** to appropriately rated forklift stands.

**⚠ WARNING:** **NEVER** use hydraulic jack as a stand alone device! **ALWAYS** transfer the lifted forklift **IMMEDIATELY** to a pair of appropriately rated forklift stands. Use one pair of forklift stands per forklift. Rated capacity is per pair only! Do not exceed rated capacity.

### Lowering

**⚠ WARNING:** *Be sure all tools and personnel are clear before Lowering load. **Slowly open the release valve!** The more you turn the knob counter-clockwise, the faster the load will come down. **Maintain control** of the rate of speed at which the load lowers at all times!*

1. Raise forklift high enough to clear the forklift stands.
2. Remove stands carefully (**always** used in pairs).
3. **Slowly** turn the release valve counter-clockwise, but no more than 1/2 full turn. If the load fails to lower:
  - a. Use another jack to raise the forklift high enough to reinstall forklift stands.
  - b. Remove the malfunctioning jack and then the forklift stands.
  - c. Using the functioning jack to lower the forklift.
4. After removing jack from under the forklift, fully lower the saddle and push handle sleeve down to reduce ram and piston exposure, rust and contamination.

## MAINTENANCE

**Important:** Use **ONLY** good grade hydraulic jack oil. Avoid mixing different types of fluid and **Never** use brake fluid, turbine oil, transmission fluid, motor oil or glycerin. Improper fluid can cause failure of the jack and the potential for sudden and immediate loss of load. We recommend premium jack oil.

### Adding oil

1. With saddle fully lowered set jack in its upright, level position. Locate and remove oil filler plug.
2. Fill with oil until just below the rim of oil filler hole. Reinstall the oil filler plug.

### Changing oil

For best performance, replace the complete fluid supply at least once per year.

1. With saddle fully lowered, remove oil filler plug.
2. Lay the jack on its side and drain the fluid into a suitable container.

**Note:** Dispose of hydraulic fluid in accordance with local regulations.

3. Fill with oil until just below the rim of oil filler hole. Reinstall the oil filler plug.

### Lubrication

1. A periodic coating of light lubricating oil to pivot points will help to prevent rust and assure that pump assemblies move freely.
2. Air pump should be internally lubricated before each use. Use good quality air tool lubricant. If no inline oiler is used, pour a teaspoon of air tool oil into the air control valve inlet. Operate the jack with air pressure to fully distribute the oil inside the air motor.

### Cleaning

Periodically check the pump piston and ram for signs of rust or corrosion. Clean as needed and wipe with an oily cloth.

**Note:** Never use sandpaper or abrasive material on these surfaces!

### Storage

When not in use, store the jack with saddle fully lowered.

## TROUBLESHOOTING

Symptom	Possible Causes	Corrective Action
Jack will not lift load	<ul style="list-style-type: none"> <li>• Release valve not tightly closed</li> <li>• Load is too heavy</li> </ul>	<ul style="list-style-type: none"> <li>• Ensure release valve tightly closed</li> <li>• Consider higher capacity jack</li> </ul>
Jack will lift, but not maintain pressure	<ul style="list-style-type: none"> <li>• Release valve not tightly closed</li> <li>• Hydraulic unit malfunction</li> </ul>	<ul style="list-style-type: none"> <li>• Ensure release valve tightly closed</li> <li>• Discontinue use, contact Omega technical service</li> </ul>
Jack will not lower after unloading	<ul style="list-style-type: none"> <li>• Reservoir overfilled</li> <li>• Linkages binding</li> <li>• Fluid level low</li> </ul>	<ul style="list-style-type: none"> <li>• Drain fluid to proper level</li> <li>• Clean and lubricate moving parts</li> <li>• Ensure proper fluid level</li> </ul>
Poor lift performance	<ul style="list-style-type: none"> <li>• Fluid level low</li> <li>• Air trapped in system</li> </ul>	<ul style="list-style-type: none"> <li>• Ensure proper fluid level</li> <li>• Refer to Bleeding/ Venting Trapped Air instructions</li> </ul>
Will not lift to full extension	<ul style="list-style-type: none"> <li>• Fluid level low</li> </ul>	<ul style="list-style-type: none"> <li>• Ensure proper fluid level</li> </ul>

# REPLACEMENT PARTS

(refer to page 6 & 7)

Not all components of the jack are replacement items, but are illustrated as a convenient reference of location and position in the assembly sequence. When ordering parts, please give the Model number, part number and parts description.

## Models 28045 & 28047:

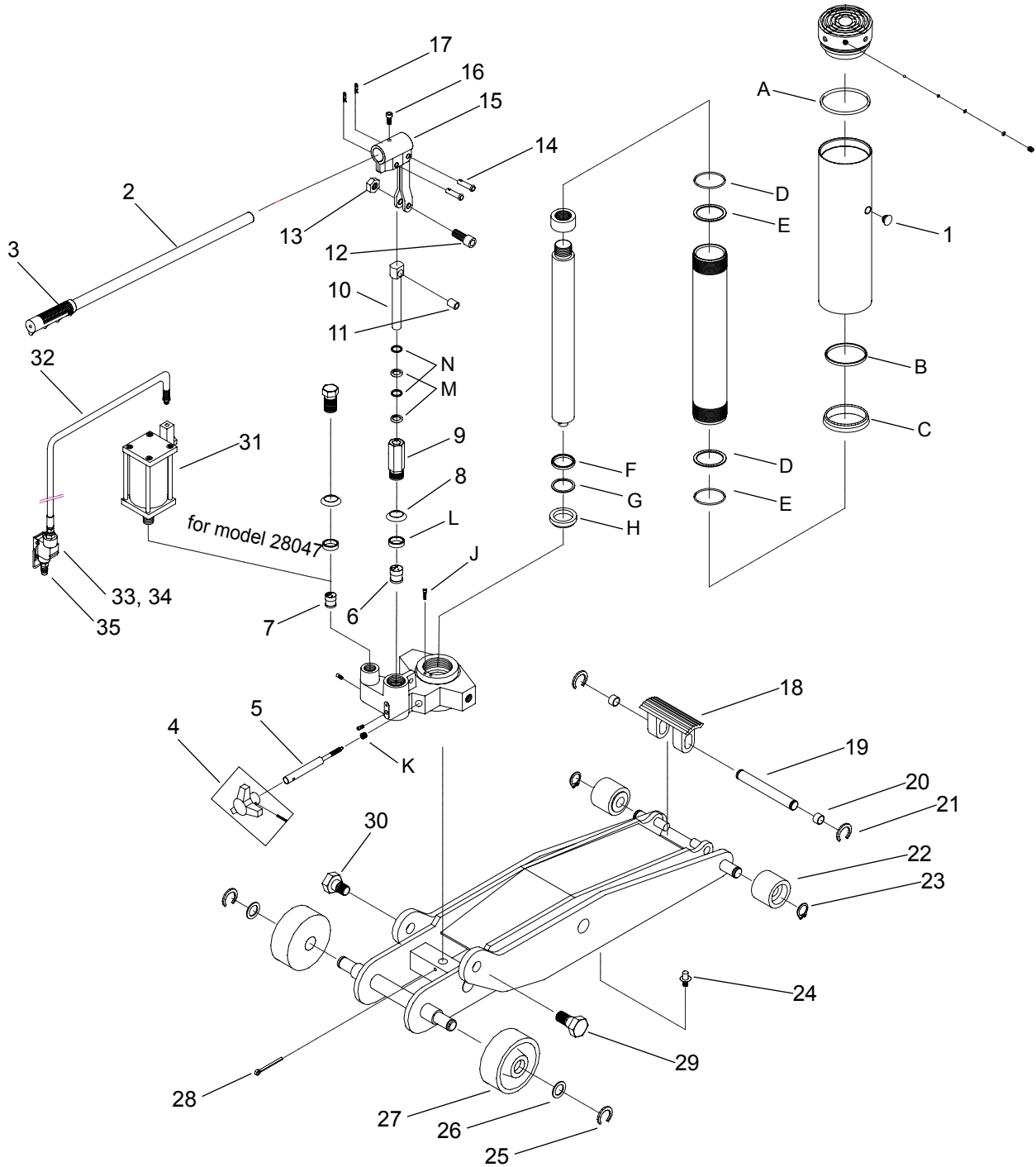


Figure 2 - Replacement Parts Illustration for Models 28045 & 28047

**Replacement Parts List for models 28045 & 28047:**

Item	Part No.	Description	Qty
1	505-9-0092-207	Oil Filler Plug	1
2	G46-6-2101-101	Handle	1
3	506-9-0264-106	Handle Grip	1
4	G34-6-1709-104	Release Valve Knob	1
5	G46-6-1710-101	Release Valve	1
6	G150-04500-000	Hyd. Cartridge, manual	1
7	BL80-15000-000	Hyd. Cartridge, air	1
8	531-3-0270-021	Washer	1
9	G32-6-1401-102	Pump Cylinder	1
10	G32-6-1306-108	Pump Piston	1
11	G46-6-1307-106	Collar	1
12	649-1-0080-046	Hex Head Bolt	1
13	661-2-0080-014	Hex Nut	1
14	566-4-0080-508	Pin	2
15	G46-6-1301-205	Handle Sleeve	1
16	644-1-0060-044	Hex. Bolt	1
17	513-5-0016-018	Cotter Pin	2
18	G46-6-4301-109	Saddle	1
19	G46-6-4304-105	Axle, Saddle	1
20	G46-6-4305-107	Collar	2

Item	Part No.	Description	Qty
21	667-5-0160-003	C-clip	2
22	500-1-0500-304	Wheel, Front	2
23	667-5-0180-009	C-clip	2
24	601-8-0006-001	Grease fitting	1
25	667-5-0190-019	E-clip	2
26	511-3-0230-005	Washer	2
27	500-1-1000-107	Wheel, Rear	2
28	602-4-0040-004	Cotter Pin	1
29	G46-6-3206-201	Bolt, Right	1
30	G46-6-3207-102	Bolt, Left	1
31	A27060-0003	Air Motor	1
32	A20060-0006	Air Hose	1
33	A20060-0015	Air Hose w/ Lift Control Valve	1
34	A20060-0007	Lift Control Valve	1
35	A20060-0016	Air Coupler, 1/4 NPT	1
**	G46-3-9901-100	Seal Kit	-
-	28045-L0 or 28047-L0	Label(s)	-
-	28045-M0	Manual	-

(\*\*) Replacement requires special skills, knowledge, and equipment. Only an authorized service center may perform the repair and/or replacement of these items. Contact Omega technical service for list of service centers.

**Seal Kit content:**

Item	Description	Qty.
1	Oil Filler Plug	1
A	O-ring	1
B	Back-up Washer	1
C	Seal	1
D	O-ring	2
E	Back-up Washer	2
F	U-cup	1
G	Back-up Washer	1
H	Seal	1
J	Filter	1
K	Oil Seal	1
L	Packing	1
M	O-ring	2
N	Back-up Washer	2

## ONE YEAR LIMITED WARRANTY

For a period of one (1) year from date of purchase, **SFA Companies** will repair or replace, at its option, without charge, any of its products which fails due to a defect in material or workmanship under normal usage. This limited warranty is a consumer's exclusive remedy.

Except where such limitations and exclusions are specifically prohibited by applicable law, (1) THE CONSUMER'S SOLE AND EXCLUSIVE REMEDY SHALL BE THE REPAIR OR REPLACEMENT OF DEFECTIVE PRODUCTS AS DESCRIBED ABOVE. (2) **SFA Companies** SHALL NOT BE LIABLE FOR ANY CONSEQUENTIAL OR INCIDENTAL DAMAGE OR LOSS WHATSOEVER. (3) ANY IMPLIED WARRANTIES, INCLUDING WITHOUT LIMITATION THE IMPLIED WARRANTIES OF MERCHANTABILITY AND FITNESS FOR A PARTICULAR PURPOSE, SHALL BE LIMITED TO ONE YEAR, OTHERWISE THE REPAIR, REPLACEMENT OR REFUND AS PROVIDED UNDER THIS EXPRESS LIMITED WARRANTY IS THE EXCLUSIVE REMEDY OF THE CONSUMER, AND IS PROVIDED IN LIEU OF ALL OTHER WARRANTIES, EXPRESS OR IMPLIED. (4) ANY MODIFICATION, ALTERATION, ABUSE, UNAUTHORIZED SERVICE OR ORNAMENTAL DESIGN VOIDS THIS WARRANTY AND IS NOT COVERED BY THIS WARRANTY.

Some states do not allow limitations on how long an implied warranty lasts, so the above limitation may not apply to you. Some states do not allow the exclusion or limitation of incidental or consequential damages, so the above limitation or exclusion may not apply to you. This warranty gives you specific legal rights, and you may also have other rights, which vary from state to state.

