

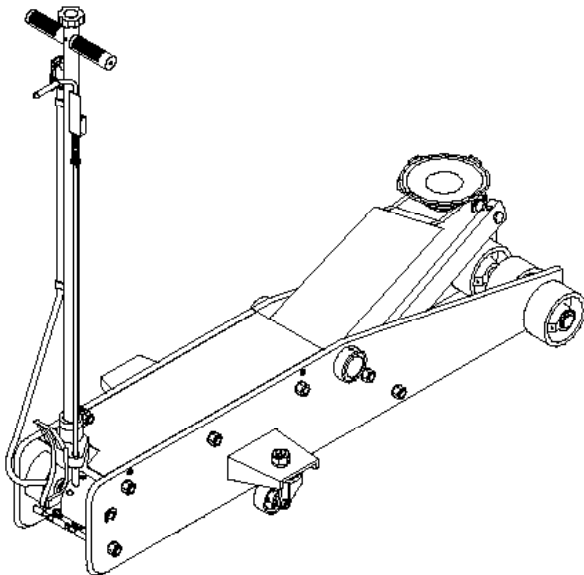
Operating Instructions & Parts Manual



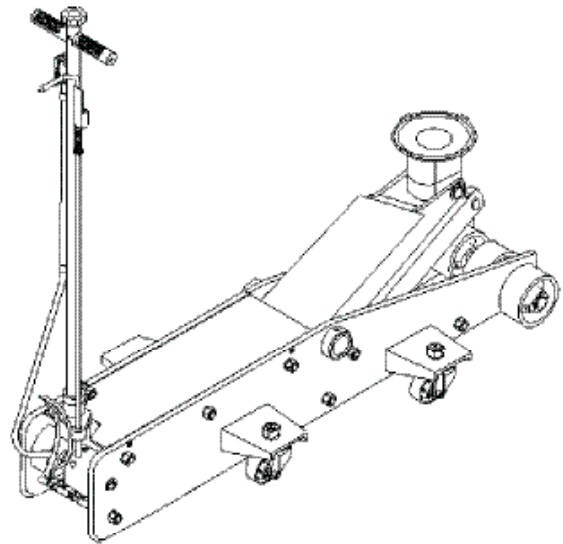
Long Chassis Hydraulic Service Jack w/ Air

Model
22201
22203

Capacity
20 Ton



Model 22201



Model 22203

U.S. Patent No.'s 5,341,723 • 5,946,912



This is the safety alert symbol. It is used to alert you to potential personal injury hazards. Obey all safety messages that follow this symbol to avoid possible injury or death.

WARNING

To avoid **crushing and related injuries**:



NEVER work on, under or around a load supported only by a hydraulic jack. **ALWAYS** use adequately rated jack stands.

SFA Companies

Read this manual and follow all the Safety Rules and Operating Instructions before using this product.

SAFETY and GENERAL INFORMATION

Save these instructions. For your safety, read, understand, and follow the information provided with and on this jack before using. The owner and operator of this equipment shall have an understanding of this jack and safe operating procedures before attempting to use. The owner and operator shall be aware that use and repair of this product may require special skills and knowledge. Instructions and safety information shall be conveyed in the operator's native language before use of this jack is authorized. If any doubt exists as to the safe and proper use of this jack, remove from service immediately.

Inspect before each use. Do not use if broken, bent, cracked or damaged parts are noted. Any jack that appears damaged in any way, or operates abnormally shall be removed from service immediately. If the jack has been or suspected to have been subjected to a shock load (a load dropped suddenly, unexpectedly upon it), immediately discontinue use until jack has been checked by a factory authorized service center (contact distributor or manufacturer for list of authorized service centers). It is recommended that an annual inspection be done by qualified personnel. Labels and Operator's Manuals are available from manufacturer.

PRODUCT DESCRIPTION

This Omega Hydraulic Air/Lever Actuated Service Jack is designed to lift, but not support, one end of a vehicle. Immediately after lifting, loads must be supported by a pair of appropriately rated jack stands. Air actuated unit requires at least 7.8 CFM @ 110 - 175 PSI. A minimum of 150 PSI air pressure is required to raise rated capacity load.

⚠ WARNING: NEVER use hydraulic jack as stand-alone device. After lifting, immediately support the lifted vehicle with a pair of appropriately rated jack stands.

SPECIFICATIONS

Model	Capacity	Jack Size (L x W x H)	Min. Height	Max. Height	Saddle Dia.
22201	20 Ton	62-1/4" x 20-3/8" x 11-3/4"	7-1/2"	26"	6-1/8"
22203		74" x 20-3/8" x 14-3/8"	13"	39-1/2"	

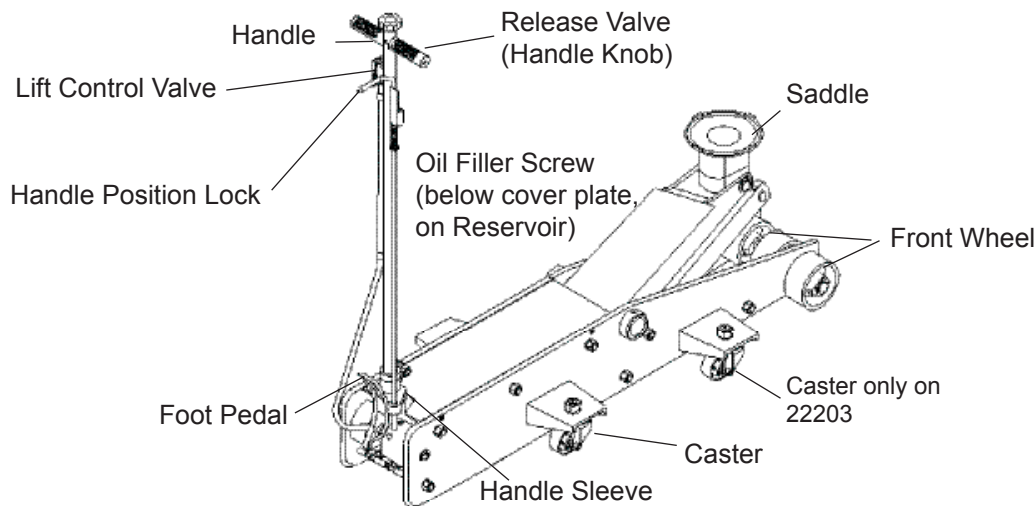


Figure 1 - Typical Long Chassis Service Jack w/ Air (22203 shown)

PREPARATION

Assembly (refer to Figures 1, 2)

Always secure the handle into the handle sleeve by means of the bolt, lock washer and nut provided. Tighten securely to prevent accidental removal of handle while in use.


Before Use

1. Verify that the product and application are compatible.
2. Before using this product, read the operator's manual completely and familiarize yourself thoroughly with the product, its components and recognize the hazards associated with its use.
3. To familiarize yourself with basic operation, turn the release valve (handle knob):
 - a. *Clockwise* until firm resistance is felt to further turning. This is the '**CLOSED**' release valve position used to **raise** the saddle.
 - b. *Counter-clockwise*, but no more than 1 full turn from the closed position. This is the '**OPEN**' release valve position used to **lower** the saddle.
4. With saddle fully lowered, and release valve closed, pump the handle. If lift arm responds immediately, jack is ready for use. If jack does not respond, follow **Bleeding/ Venting Trapped Air** instructions below.
5. Pour a teaspoon of good quality air tool lubricant into the air supply inlet of the lift control valve. Connect to air supply, then squeeze the lift control valve for 3 seconds to evenly distribute lubricant.

Note: These models are equipped with a popular 1/4" NPT air coupler. When installing a different air coupler of your choice, ensure that thread tape or compound is used when servicing connections. To ensure dependable, trouble free operation an inline air dryer and oiler is recommended.
6. Ensure that jack rolls freely. Raise and lower the unloaded saddle throughout the lifting range before putting into service to ensure the pump operates smoothly. Replace worn or damaged parts and assemblies with authorized replacement parts only.

Bleeding / Venting Trapped Air

With the release valve in the OPEN position (3b.) and with saddle fully lowered, locate and remove the oil filler plug/screw. Pump 6 to 8 full strokes. This will help release any pressurized air which may be trapped within the reservoir. Reinstall the oil filler plug/screw.

 **WARNING**

- **Study, understand, and follow** all printed materials provided with/on this product before use.
- **Do not** exceed rated capacity.
- Use only on hard, level surface.
- **This is a lifting device only! Immediately** after lifting, support the load with a **pair** of appropriately rated jack stands.
- **Only** attachments and/ or adapters supplied by the manufacturer shall be used.
- Lift only on areas of the vehicle as specified by the vehicle manufacturer.
- Never wire, clamp or otherwise disable the lift control valve to function by other than operator's hand.
- Do not move or dolly the vehicle while on the jack.
- No alterations shall be made to this product.
- Failure to heed these markings may result in personal injury and/or property damage.

 **WARNING**



To avoid **crushing and related injuries**:

- **Never** work on, under or around a load supported only by hydraulic jack.
- **Always** use adequately rated jack stands.
- Chock each unlifted tire in both directions.
- **Do not** use this device to lift, level, lower, support nor move a house, mobile home, travel trailer, camper or any building structure.
- **Be alert** and **sober** when using this product. Do not operate under the influence of drugs or alcohol.

OPERATION

Lifting



Only attachments and/or adapters supplied by the manufacturer shall be used. Lift only on area of the vehicle as specified by the vehicle manufacturer.

Note: The jack is equipped with handle position lock. To adjust the handle, release lock device by pulling the lever up, then back until lever is locked into place.

1. Follow the vehicle manufacturer's recommended guidelines for lifting. Engage the emergency brake and chock each unlifted wheel in both directions to prevent inadvertent vehicle movement.
2. Locate and close the release valve by turning the release valve knob clockwise until firm resistance is felt.
3. Refer to the vehicle manufacturer owner's manual to locate approved lifting points on the vehicle. Center jack saddle under lift point.
4. Verify lift point, then pump handle or foot pedal to contact lift point. To lift, pump handle or squeeze lift control valve until load reaches desired height. **Never** use foot pedal to raise load.
5. Transfer the load **immediately** to appropriately rated jack stands.



NEVER use hydraulic jack as a stand alone device! **ALWAYS** transfer the lifted load **IMMEDIATELY** to a pair of appropriately rated jack stands. Use one pair of jack stands per vehicle. Rated capacity is per pair only! Do not exceed rated capacity.

Lowering



*Be sure all tools and personnel are clear before lowering load. **Slowly open the release valve!** The more you turn the release valve knob counter-clockwise, the faster the load will come down. **Maintain control** of the rate of speed at which the load lowers at all times!*

1. Raise load high enough to clear the jack stands.
2. Remove jack stands carefully. (**always** used in pairs).
3. **Slowly** turn the release valve knob counter-clockwise, but no more than 1/2 full turn. If the load fails to lower:
 - a. Use another jack to raise the vehicle high enough to reinstall jack stands.
 - b. Remove the malfunctioning jack and then the jack stands.
 - c. Use the functioning jack to lower the vehicle.
4. After removing jack from under the vehicle, fully lower the saddle to reduce ram exposure to rust and contamination.

MAINTENANCE

Important: Use **ONLY** good grade hydraulic jack oil. Avoid mixing different types of fluid and **Never** use brake fluid, turbine oil, transmission fluid, motor oil or glycerin. Improper fluid can cause failure of the jack and the potential for sudden and immediate loss of load. We recommend premium hydraulic jack oil.

Adding oil

1. With saddle fully lowered set jack in its upright, level position. Locate and remove oil filler vent screw.
2. Fill with oil until ~3/16" above the inner cylinder as seen from the oil filler hole. Reinstall the oil filler vent screw.

Changing oil

For best performance, replace the complete fluid supply at least once per year.

1. With saddle fully lowered, remove the oil filler vent screw.
2. Lay the jack on its side and drain the fluid into a suitable container.

Note: Dispose of hydraulic fluid in accordance with local regulations.

3. Fill with oil until ~3/16" above the inner cylinder as seen from the oil filler hole. Reinstall the oil filler vent screw.

Lubrication

A periodic coating of light lubricating oil to pivot points, axles and hinges will help to prevent rust and assure that wheels, casters and pump assemblies move freely. To help ensure trouble free operation, an inline air dryer and oiler is recommended.

Cleaning

Periodically check the pump piston and ram for signs of rust or corrosion. Clean as needed and wipe with an oily cloth.

Note: Never use sandpaper or abrasive material on these surfaces!

Storage

When not in use, store the jack with saddle fully lowered.

TROUBLESHOOTING

Symptom	Possible Causes	Corrective Action
Jack will not lift load	<ul style="list-style-type: none">• Release valve not tightly closed• Overload condition• Air pressure inadequate	<ul style="list-style-type: none">• Ensure release valve tightly closed• Remedy overload condition• Ensure adequate air pressure
Jack will lift, but not maintain pressure	<ul style="list-style-type: none">• Release valve not tightly closed• Hydraulic unit malfunction	<ul style="list-style-type: none">• Ensure release valve tightly closed• Discontinue use, contact Omega technical service
Jack will not lower after unloading	<ul style="list-style-type: none">• Reservoir overfilled• Linkages binding• Fluid level low	<ul style="list-style-type: none">• Drain fluid to proper level• Clean and lubricate moving parts• Ensure proper fluid level
Poor lift performance	<ul style="list-style-type: none">• Fluid level low• Air trapped in system	<ul style="list-style-type: none">• Ensure proper fluid level• See Page 3 for bleeding/Venting Trapped Air
Will not lift to full extension	<ul style="list-style-type: none">• Fluid level low	<ul style="list-style-type: none">• Ensure proper fluid level

REPLACEMENT PARTS

(refer to page 6 thru 9)

Not all components of the jack are replacement items, but are illustrated as a convenient reference of location and position in the assembly sequence. When ordering parts, give Model number, serial number and parts description.

Replacement Parts Illustration for Model 22201

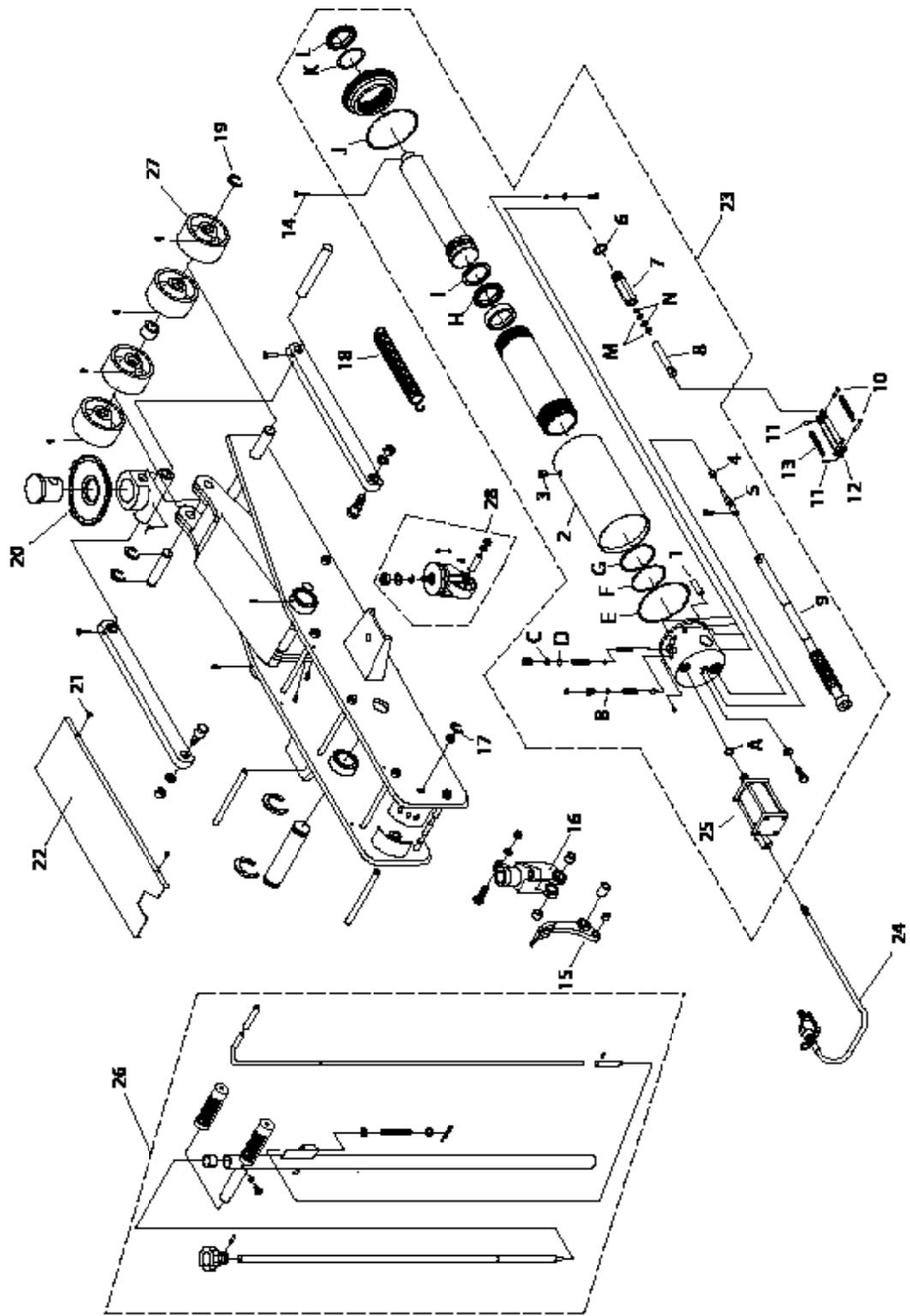


Figure 2 - Replacement Parts Illustration for Model 22201

Replacement Parts List for Model 22201

Item	Part No.	Description	Qty.
1	532-8-0008-108	Filter	1
2	G55-6-1803-109	Reservoir	1
3	G55-4-1900-105	Oil Filler Vent Screw Assy.	1
4	551-7-0060-066	Oil Seal	1
5	G13-6-1701-105	Release Valve	1
6	515-3-0190-108	Copper Gasket	1
7	G55-6-1401-109	Pump Cylinder	1
8	G55-6-1306-105	Pump Piston	1
9	G55-3-2600-102	U-joint Assy.	1
10	G58-6-1358-105	Pin	2
11	513-5-0018-012	Retaining Pin	2
12	G58-3-1309-104	Piston Link	1
13	521-2-0220-077	Extension Spring	2
14	653-1-0064-061	Pin	1
15	421-6-9004-200	Foot Pedal	1
16	G-55-6-1301-105	Handle Fork	1
17	667-5-0180-009	Snap Ring	4
18	521-2-0370-104	Extension Spring	2
19	677-5-0240-018	"E" Clip	2
20	G55-6-4201-106	Saddle	1
21	620-1-0050-304	Screw	4
22	G55-6-4120-106	Cover	1
23	G55-1-1000-101	Hydraulic Unit	1
24	A19-4-2050-101	Air Ctrl Valve & Hose	1
25	G55-3-2000-108	Air Pump Assy.	1
26	G55-4-2300-106	Handle Assy.	1
27	500-1-1500-309	Front Wheel	4
28	G55-4-5000-200	Caster Assy.	2
A-N,4,6	G55-3-9900-109	Repair Kit	-

Replacement Parts Illustration for Model 222203

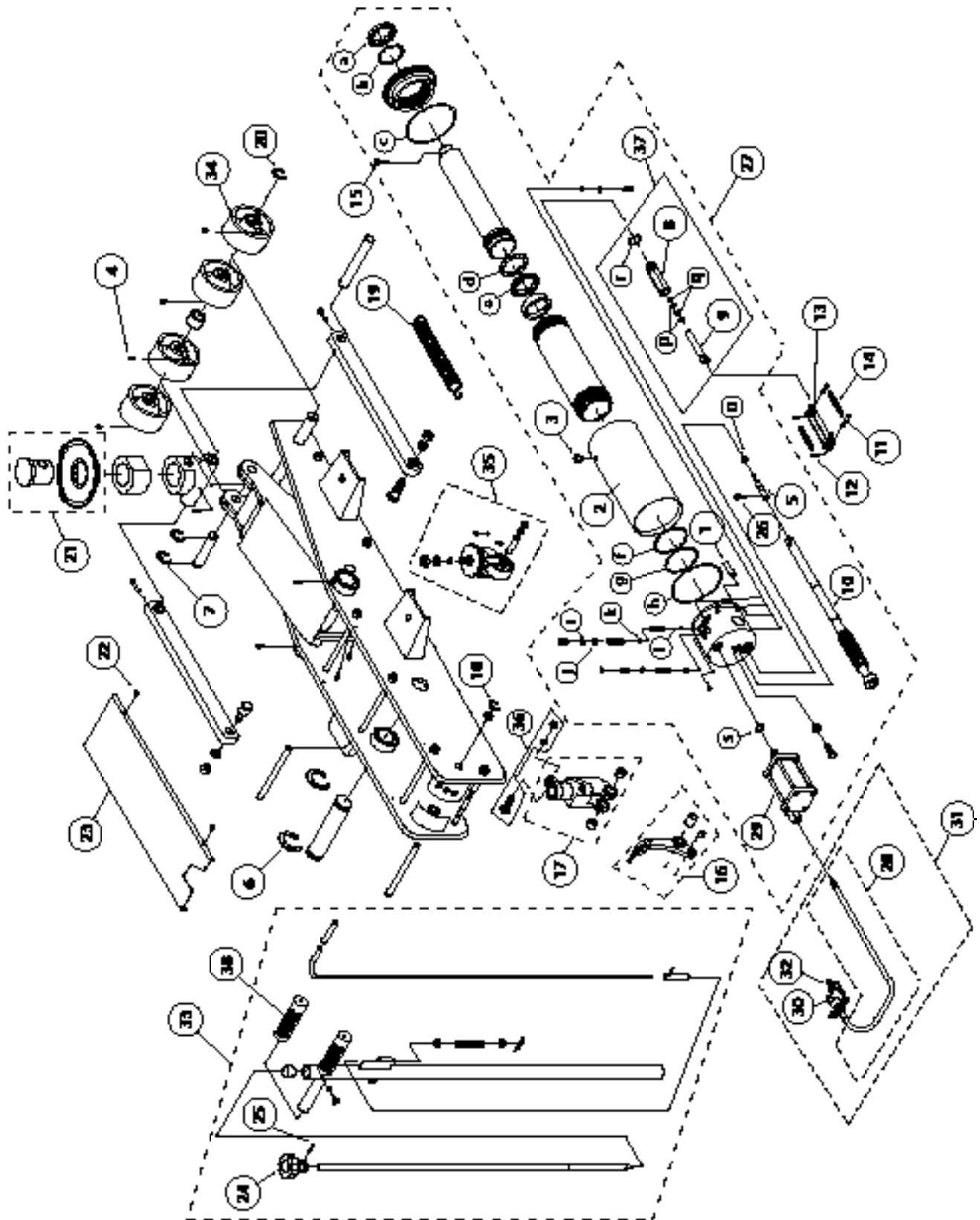


Figure 3 - Replacement Parts Illustration for Model 222203

Replacement Parts List for Model 22203

Item	Part No.	Description	Qty.
1	532-8-0008-004	Filter	1
2	G55-5-0803-103	Reservoir	1
3	G55-4-1900-105	Vented Filler Screw	1
4	601-8-0006-001	Grease Nipple	1
5	G13-6-1701-105	Release Valve	13
6	667-5-0450-002	'C' Clip	1
7	667-5-0360-002	'C' Clip	2
8	G651-31002-000	Pump Cylinder	2
9	G651-31001-000	Pump Piston	1
10	G55-3-2600-102	Assy, Universal Joint	1
11	G58-6-1358-105	Pin	1
12	1513-5-0018-012	Spring Clip	2
13	G58-3-1309-104	Piston Link	2
14	521-2-0220-077	Return Spring, Pedal	2
15	653-1-0064-061	Pin	2
16	421-3-9004-101	Assy, Foot Pedal	1
17	G55-3-9911-104	Assy, Handle Sleeve	1
18	667-5-0180-009	Snap Ring	1
19	521-2-0370-104	Return Spring	2
20	677-5-0240-018	E- Clip	2
21	G55-3-9904-107	Assy, Saddle	2
22	667-5-0180-009	Screw, Phillips	1
23	G55-5-4120-100	Cover Plate	4
24	421-6-2202-209	Knob	1
25	601-4-0040-034	Spring Pin	1
26	649-1-0050-019	Screw	1
27	G55-1-1005-101	Hyd. Power Unit	1
28	A19-4-2050-101	Air Hose	1
29	G55-3-2000-108	Air Motor	1
30	A19-3-2050-105	Lift Control Valve	1
31	A27-4-2050-105	Hose Assembly	1
32	A07-6-2062-108	Quick coupler, Male	1
33	A19-4-2050-101	Handle Assembly	1
34	500-1-1500-309	Front Wheel	4
35	G55-4-5000-200	Caster Assembly	2
36	G55-3-9907-103	Bolt Assembly	1
37	G55-3-9908-105	Pump Assembly	1
38	506-9-0264-106	Handle Grip	2
A- S	G55-3-9900-109	**Repair Kit for Hyd. Unit	1

(**) Replacement requires special skills, knowledge, and equipment. Only an authorized service center may perform the repair and/ or replacement of these items. Contact Omega technical service for list of service centers.

ONE YEAR LIMITED WARRANTY

For a period of one (1) year from date of purchase, **SFA Companies** will repair or replace, at its option, without charge, any of its products which fails due to a defect in material or workmanship under normal usage. This limited warranty is a consumer's exclusive remedy.

Except where such limitations and exclusions are specifically prohibited by applicable law, (1) THE CONSUMER'S SOLE AND EXCLUSIVE REMEDY SHALL BE THE REPAIR OR REPLACEMENT OF DEFECTIVE PRODUCTS AS DESCRIBED ABOVE. (2) **SFA COMPANIES** SHALL NOT BE LIABLE FOR ANY CONSEQUENTIAL OR INCIDENTAL DAMAGE OR LOSS WHATSOEVER. (3) ANY IMPLIED WARRANTIES, INCLUDING WITHOUT LIMITATION THE IMPLIED WARRANTIES OF MERCHANTABILITY AND FITNESS FOR A PARTICULAR PURPOSE, SHALL BE LIMITED TO ONE YEAR, OTHERWISE THE REPAIR, REPLACEMENT OR REFUND AS PROVIDED UNDER THIS EXPRESS LIMITED WARRANTY IS THE EXCLUSIVE REMEDY OF THE CONSUMER, AND IS PROVIDED IN LIEU OF ALL OTHER WARRANTIES, EXPRESS OR IMPLIED. (4) ANY MODIFICATION, ALTERATION, ABUSE, UNAUTHORIZED SERVICE OR ORNAMENTAL DESIGN VOIDS THIS WARRANTY AND IS NOT COVERED BY THIS WARRANTY.

Some states do not allow limitations on how long an implied warranty lasts, so the above limitation may not apply to you. Some states do not allow the exclusion or limitation of incidental or consequential damages, so the above limitation or exclusion may not apply to you. This warranty gives you specific legal rights, and you may also have other rights which vary from state to state.

