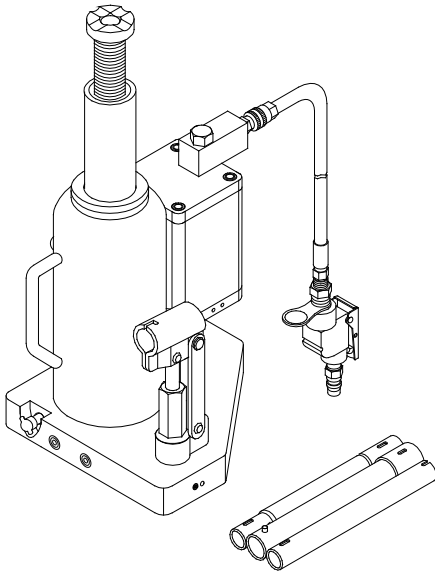


Operating Instructions & Parts Manual

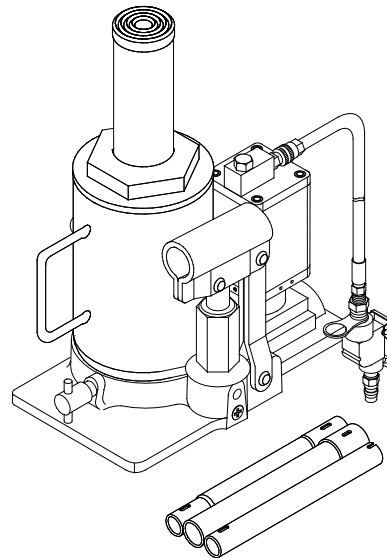


Air/Manual Hydraulic Bottle Jacks

Model	Capacity
18122C	12 Ton
18202C	20 Ton
18204C	20 Ton
18209 (<i>Low Profile</i>)	20 Ton
18302C	30 Ton



Model 18122C, 18202C, 18204C & 18209



Model 18302C



This is the safety alert symbol. It is used to alert you to potential personal injury hazards. Obey all safety messages that follow this symbol to avoid possible injury or death.

SFA Companies

Read this manual and follow all the Safety Rules and Operating Instructions before using this product.


SAFETY AND GENERAL INFORMATION

Save these instructions. For your safety, read, understand, and follow the information provided with and on this device before using. The owner and/or operator shall have an understanding of the device, its operating characteristics and safety operating instructions before operating the equipment. The owner and/or operator shall be aware that use and repair of this product may require special skills and knowledge. Instructions and safety information shall be read to and discussed with the operator in the operator's native language, making sure that the operator comprehends their contents, before use of this equipment is authorized. If any doubt exists as to the safe and proper use of this device, remove from service immediately.

Inspect before each use. Do not use if abnormal conditions such as cracked welds, damaged, loose or missing parts are noted. Any equipment that appears damaged in any way, is found to be worn, or operates abnormally shall be removed from service until repaired. If the equipment has been or is suspected to have been subjected to an abnormal load or shock, immediately discontinue use until inspected by a factory authorized repair facility (contact distributor or manufacturer for list of authorized repair facilities). It is recommended that an annual inspection be made by an authorized repair facility. Labels and Operator's Manuals are available from the manufacturer.

PRODUCT DESCRIPTION

Omega Air Actuated Hydraulic Bottle Jack is designed to lift, not support, rated capacity loads consisting of one end of a vehicle. Immediately after lifting, the load must be supported by a pair of appropriately rated jack stands. Ensure that air source can dedicate 7.8 CFM @ 110-175 psi to each jack operated. A minimum of 150 psi air pressure is required to raise rated capacity load.

 **WARNING:** *Never use a hydraulic jack as a stand alone device. After lifting, immediately support the lifted load with a pair of appropriately rated jack stands.*

PREPARATION

Before Use

1. Before using this product, read the operator's manual completely and familiarize yourself thoroughly with the product, its components and recognize the hazards associated with its use.
2. Verify that the product and application are compatible.
3. Assemble handle, ensure spring clips align with slots.
4. To familiarize yourself with basic operation, use the notched end of provided handle to engage and turn the release valve:
 - a. *Clockwise* until firm resistance is felt to further turning. This is the '**CLOSED**' release valve position used to raise the ram plunger.
 - b. *Counter-clockwise*, but no more than 1 turn from the closed position. This is the '**OPEN**' release valve position used to lower the ram plunger.
5. With saddle fully lowered, and release valve closed, pump the operating handle. If lift arm responds immediately, jack is ready for use. If jack does not respond, follow **Bleeding/Venting Trapped Air** procedure below.
6. Pour a teaspoon of good quality, air tool lubricant into the air supply inlet of the lift control valve. Connect to air supply and squeeze lift control valve for 3 seconds to evenly distribute lubricant.
7. This product is equipped with the popular 1/4" NPT air coupler. When installing a different air coupler of your choice, ensure that thread tape or compound is used when servicing connections. To ensure dependable, trouble free operation an in-line air dryer and oiler is recommended.
8. Check that the pump operates smoothly and that the extension screw will thread up/down easily before putting into service. Replace worn or damaged parts and assemblies with Omega authorized replacement parts only.

Bleeding/Venting Trapped Air

With the release valve in the OPEN position (4b above) and with ram plunger fully lowered, locate and remove the oil filler screw. Insert the handle into the handle sleeve; then pump 6 to 8 full strokes. This will help release any pressurized air which may be trapped within the reservoir. Oil level should be even with the bottom of the oil filler hole. Reinstall the oil filler screw.

WARNING

- Study, understand, and follow all instructions before operating this device.
- Do not exceed rated capacity.
- Use only on hard, level surface.
- This is a lifting device only. Immediately after lifting, support the load with appropriate means.
- Lift only on areas of the vehicle as specified by the vehicle manufacturer.
- No alterations shall be made to this product.
- Only attachments and/or adapters supplied by the manufacturer shall be used.
- Failure to heed these markings may result in personal injury and/or property damage.

WARNING



To avoid crushing and related injuries:

- Never work on, under or around a load supported only by hydraulic jack.
- Always use adequately rated jack stands.
- Chock each unlifted tire in both directions.
- Do not use this device to lift, level, lower, support nor move a house, mobile home, travel trailer, camper or any building structure.
- Be alert and sober when using this product. Do not operate under the influence of drugs or alcohol.

SPECIFICATIONS

Model	Base Size (L x W)	Saddle Diameter	Min. Height	Max. Height	Hydraulic Lift
18122C	8" x 6-1/2"	1-5/8"	9-1/2"	18-1/2"	5-1/2"
18202C	8-1/2" x 7-1/4"	2"	9-3/4"	18-3/4"	5-1/8"
18204C	8-1/2" x 7-1/4"	2"	9-3/4"	18-3/4"	5-1/8"
18209	8-1/2" x 7-1/4"	2"	8-1/8"	15-1/2"	4-1/8"
18302C	10 1/4" x 8 1/4"	2-1/2"	11"	18"	7"

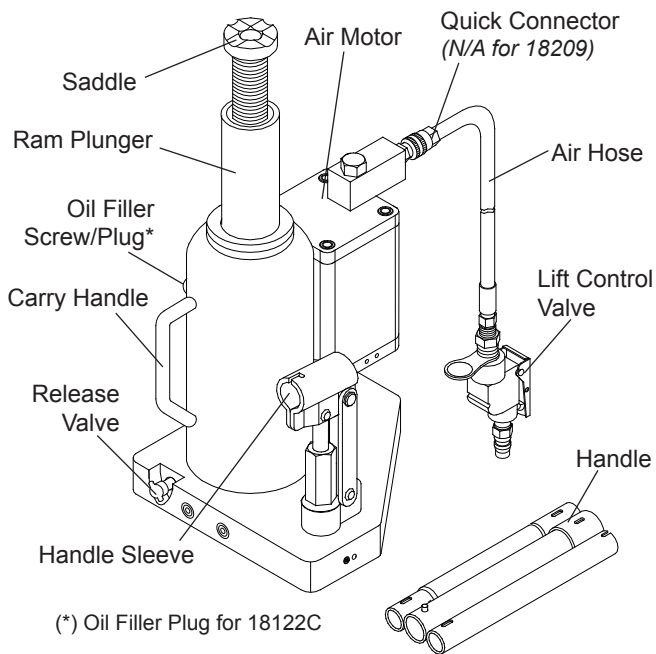


Figure 1 - 18122C, 18202C, 18204C & 18209 Nomenclature

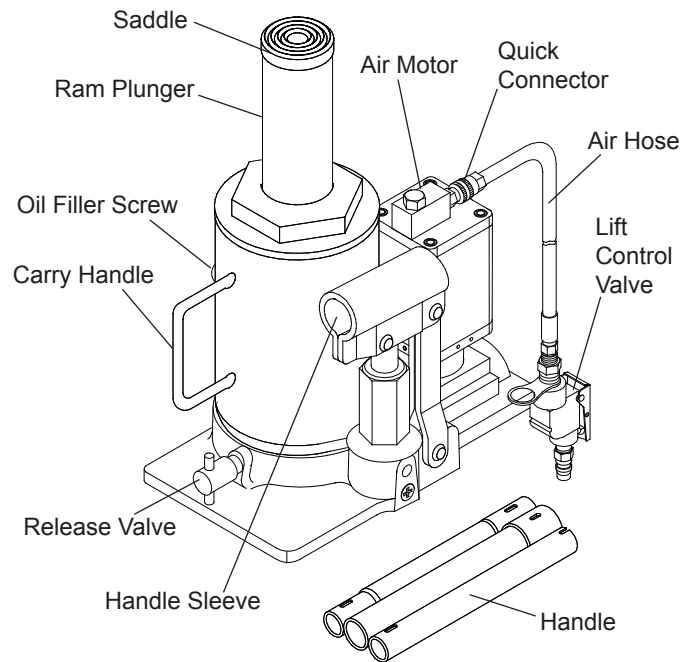


Figure 2 - 18302C Nomenclature

OPERATION

Raising the Ram Plunger

1. Assemble handle, ensure that spring clips align with slots.
2. Place vehicle in park, with emergency brake on and wheel securely chocked to prevent inadvertent vehicle movement.
3. Locate and close release valve by turning handle clockwise until firm resistance is felt to further thread engagement.
4. Verify lift point, center jack saddle under lift point.
5. Squeeze the lift control valve or insert handle into handle sleeve and pump to contact lift point. To lift, continue pumping until load reaches desired height. **DO NOT OPERATE BY AIR AND BY HAND PUMPING AT THE SAME TIME.**
6. Immediately transfer the lifted load to a pair of appropriately rated jack stands.

NOTICE: Use the provided Pump Handle. The handle furnished with this jack will safely engage the release valve and operate the Handle Sleeve. If handle is worn, operates abnormally, or will not positively engage the release valve, **STOP**, discontinue use of the jack until a factory replacement handle can be acquired.

NOTICE: Do not use extensions on air hose or operating handle.

Lowering

⚠ WARNING: Clear all tools and personnel before lowering load. Open release valve slowly. The further handle is turned counter-clockwise, the faster the load will descend. Maintain control of the load at all times.

1. Raise load high enough to clear the jack stands, then remove jack stands.
2. Slowly turn the handle counter-clockwise, but no more than 1/2 turn. If the load fails to lower:
 - a. Use another jack to raise the vehicle high enough to reinstall jack stands.
 - b. Raise load high enough to clear the jack stands, remove the affected jack and then the stands.
 - c. Lower the load.
3. After removing jack from under the load, push ram and handle sleeve down to reduce exposure to rust and contamination.

MAINTENANCE

NOTICE: Use only good quality hydraulic jack oil. Avoid mixing different types of fluid and NEVER use brake fluid, turbine oil, transmission fluid, motor oil or glycerin. Improper fluid can cause premature failure of the jack and the potential for sudden and immediate loss of load. Premium hydraulic jack oil is recommended.

Adding oil

1. With ram plunger fully lowered and pump piston fully depressed, set jack in its upright, level position. Remove oil filler screw.
2. Fill with oil until just below the rim of the oil filler plug hole. Reinstall the oil filler screw.

Changing oil

For best performance and longest life, replace the complete fluid supply at least once per year.

1. With ram plunger fully lowered and pump piston fully depressed, remove the oil filler screw.
2. Lay the jack on its side and drain the fluid into a suitable container.

NOTICE: Dispose of hydraulic oil in accordance with local environmental regulations.

3. Fill with oil until just below the rim of the oil filler hole. Reinstall the oil filler screw.
4. Perform **Bleeding/Venting Trapped Air** procedure, pg. 2.

Lubrication

1. A periodic coating of light lubricating oil to pivot points will help to prevent rust and assure that pump assemblies move freely.
2. Air pump should be internally lubricated before each use. Use good quality air tool lubricant. If no in-line oiler is used, pour a teaspoon of air tool oil into the air control valve inlet. Operate the jack with air pressure to fully distribute the oil inside the air motor.

Cleaning

Periodically check the pump piston and ram for signs of rust/corrosion. Clean as needed and wipe with oily cloth.

NOTICE: Do not use sandpaper or abrasive material on ram and pump piston surfaces.

Storage

When not in use, store the jack with pump piston and ram plunger fully retracted and air supply disconnected.

TROUBLESHOOTING

Symptom	Possible Causes	Corrective Action
Jack will not lift load	<ul style="list-style-type: none"> • Release valve not tightly closed • Overload condition • Air pressure inadequate 	<ul style="list-style-type: none"> • Ensure release valve tightly closed • Remedy overload condition • Ensure adequate air pressure
Jack will lift, but not maintain pressure	<ul style="list-style-type: none"> • Release valve not tightly closed • Overload condition • Hydraulic unit malfunction 	<ul style="list-style-type: none"> • Ensure release valve tightly closed • Remedy overload condition • Contact Omega Tech. Service
Jack will not lower after unloading	<ul style="list-style-type: none"> • Reservoir overfilled 	<ul style="list-style-type: none"> • Ensure load is removed, then drain fluid to proper level
Poor lift performance	<ul style="list-style-type: none"> • Fluid level low • Air trapped in system 	<ul style="list-style-type: none"> • Ensure proper fluid level • Follow Bleeding/Venting Trapped Air procedure on page 2
Will not lift to full extension	<ul style="list-style-type: none"> • Fluid level low 	<ul style="list-style-type: none"> • Ensure proper fluid level

REPLACEMENT PARTS

Not all components of the jack are replacement items, but are illustrated as a convenient reference of location and position in the assembly sequence. When ordering parts, give Model number, serial number and parts description.

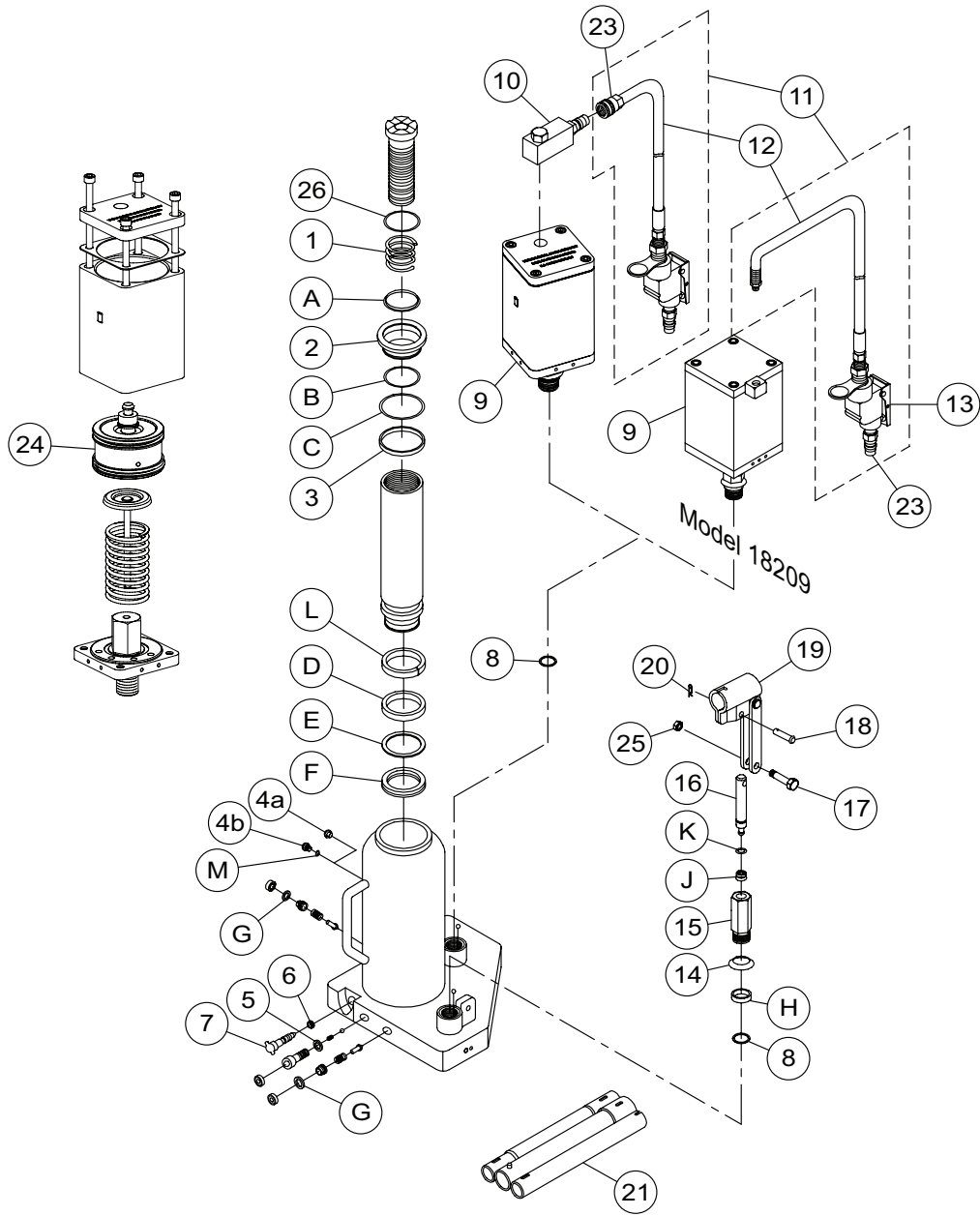


Figure 3 - Model 18122C, 18202C & 18209 Replacement Parts Illustration

Replacement Parts List for Models 18122C, 18202C & 18209

Item	Part No. for Model:			Description	Qty.
	18122C	18202C	18209		
1	B12W-12003-100	A070-11002-000		Spring	1
2	A120-10004-000	A190-10002-000		Cylinder Fastener	1
3	A120-10003-000	A190-10001-000		Guide Ring	1
4a	5905-00100-200	N/A		Filler Plug	1
4b	N/A	G62S-03301-000		Filler Screw	1
5	A120-10002-000			Special Washer	2
6	5905-00054-000			Seal	1
7	BT10-24001-000			Release Valve	1
8	5308-00095-000			Gasket	2
9	A27010-0001	A27060-0003		Air Motor	1
10	A27010-0002	N/A		Air Inlet Swivel	1
11	A20060-0005	A20060-0015		Hose Assy.	1
12	A20060-0006			Air Hose	1
13	A20060-0007			Lift Control Valve	1
14	B020-15002-000			Washer	1
15	B080-15001-000			Pump Cylinder	1
16	A120-15101-000			Pump Piston	1
17	5115-07028-100			Bolt	1
18	5405-07024-000			Pin	1
19	A120-13000-000			Handle Socket	1
20	5405-02018-000			Snap Pin	1
21	B10N-21000-000			Handle Assembly	1
22	A27010-0011	N/A		Air Coupler, Female 1/4 NPT	1
23	A20060-0016			Air Coupler, Male 1/4 NPT	1
24	A270-01100-0000			Piston, Air Motor	1
25	5206-00006-000			Nut	1
*	A1206S-046	A1906S-047		Seal Kit (incl. #4a, 6 & A - M)	-
-	18122C-L0	18202C-L0	18209-L0	Label	1
-	18122C-M0			Manual	1

(*) Seal Kit Contents:

Item	Description	Qty.
4a	Filler Plug (Model 18122C only)	1
6	Seal	1
A	Dust Wiper	1
B	O-ring	1
C	O-ring	1
D	Ram Bearing	1
E	Back-up Ring	1

Item	Description	Qty.
F	U-cup	1
G	O-ring	2
H	Packing	1
J	Oil Seal	1
K	O-ring	1
L	Ram Bearing (Models 18202C & 18209)	1
M	O-ring (Models 18202C & 18209)	1

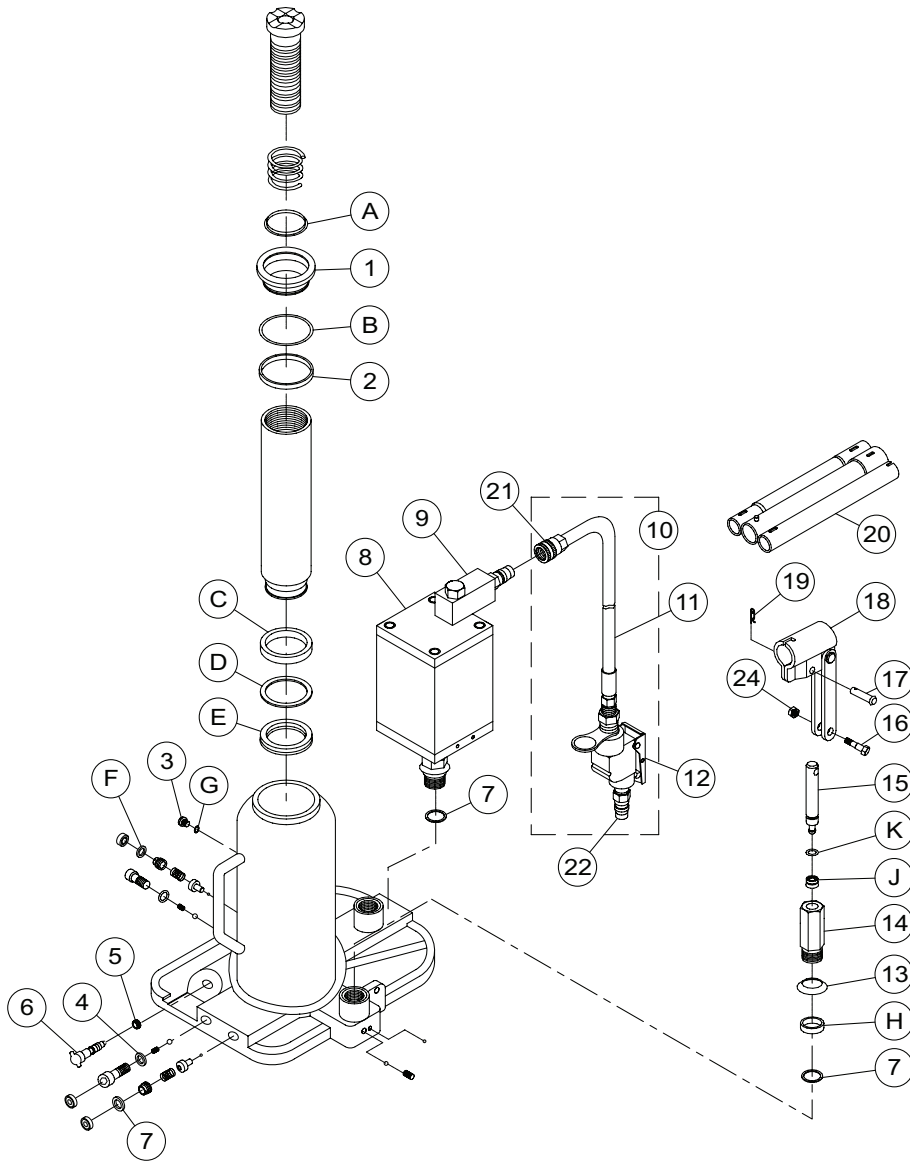


Figure 4 - Model 18204C Replacement Parts Illustration

Replacement Parts List for Models 18204C

Item	Part No.	Description	Qty.
1	SQ20-2000-039	Cylinder Fastener	1
2	SQ20-2000-036	Guide Ring	1
3	SQ20-2000-040	Filler Screw	1
4	SQ20-2000-028	Special Washer	2
5	5905-00054-000	Seal	1
6	SQ20-2000-035	Release Valve	1
7	SQ20-2000-029	Gasket	2
8	G831-03200-000	Air Motor	1
9	A240-01000-000	Air Inlet Swivel	1
10	A190-01000-000	Hose Assy.	1
11	A240-02100-000	Air Hose	1
12	A240-02200-000	Lift Control Valve	1
13	SQ20-2000-017	Washer	1
14	SQ20-2000-016	Pump Cylinder	1
15	SQ20-2000-015	Pump Piston	1
16	SQ20-2000-011	Bolt	1
17	SQ20-2000-012	Pin	1
18	SQ20-2000-006	Handle Socket	1
19	SQ20-2000-010	Snap Pin	1
20	B10N-21000-000	Handle Assembly	1
21	A240-02300-000	Air Coupler, Female 1/4 NPT	1
22	A240-02400-000	Air Coupler, Male 1/4 NPT	1
23	G831-03210-000	Piston, Air Motor (not shown in parts illus.)	1
24	SQ20-2000-014	Nut	1
*	SQ20-2000-047	Seal Kit (includes #5, A - K)	-

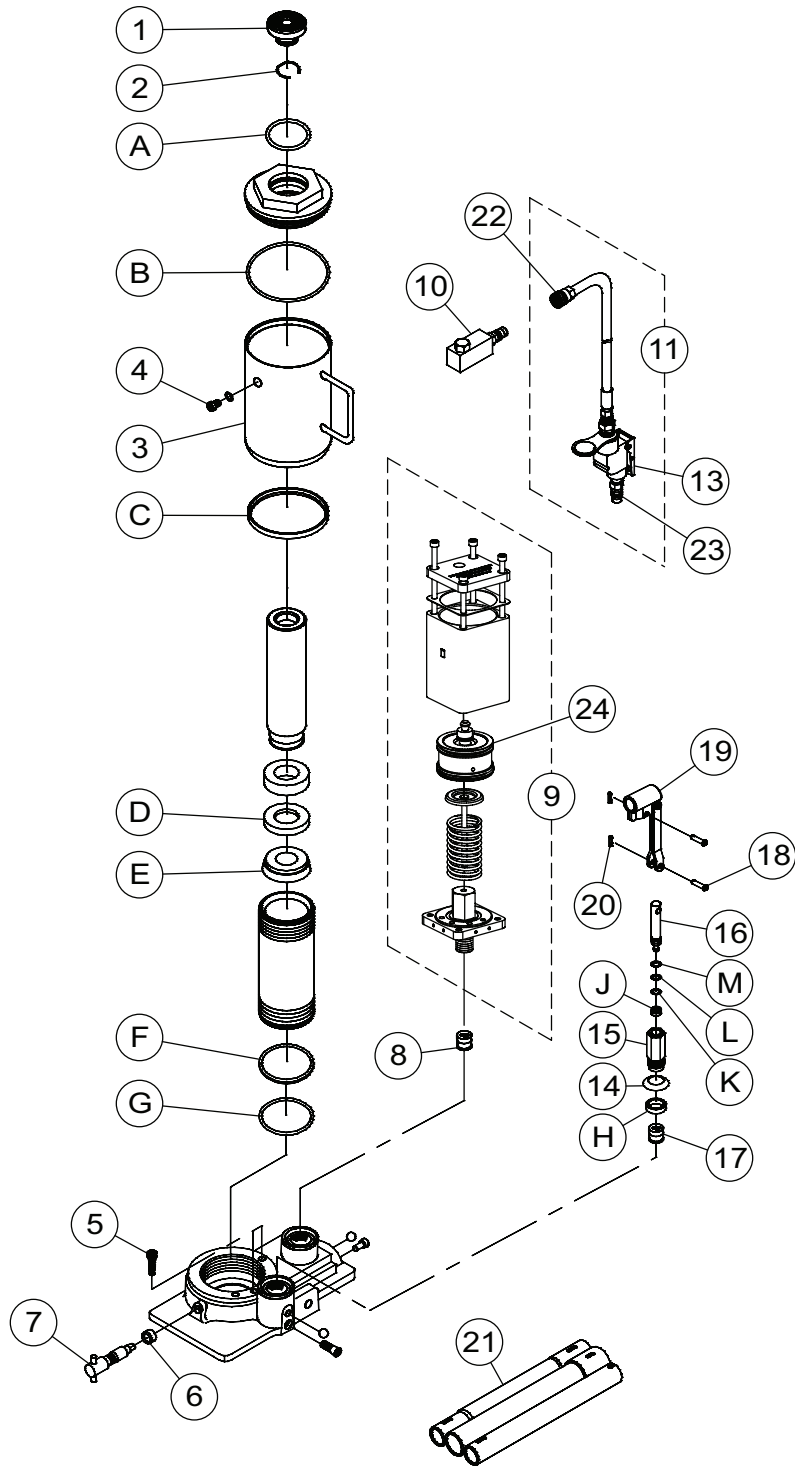


Figure 4 - Model 18302C Replacement Parts Illustration

Replacement Parts List for Models 18302C

Item	18302C	Description	Qty.
1	B300-10003-000	Saddle	1
2	5308-00380-000	Spring	1
3	B300-15000-000	Reservoir	1
4	G62S-03301-000	Filler Screw	1
5	B120-10003-000	Filter	2
6	5905-00054-000	Seal	1
7	BT02-17100-000	Release Valve	1
8	G100-44000-000	Hyd. Cartridge	1
9	A27010-0001	Air Motor	1
10	A27010-0002	Air Inlet Swivel	1
11	A20060-0005	Hose Assy.	1
12	A20060-0006	Air Hose	1
13	A20060-0007	Lift Control Valve	1
14	B300-14002-000	Washer	1
15	B300-14001-000	Pump Cylinder	1
16	B300-14101-000	Pump Piston	1
17	G150-04500-000	Hyd. Cartridge	1
18	5405-08030-000	Pin	2
19	B300-13000-000	Handle Socket	1
20	5405-02018-000	Snap Pin	2
21	B300-17000-000	Handle Assembly	1
22	A27010-0011	Air Coupler, Female	1
23	A20060-0016	Air Coupler, Male	1
24	A270-01100-0000	Piston, Air Motor	1
*	A3007S-041	Seal Kit	-
-	18302C-L0	Label	1
-	18122C-M0	Manual	1

(*) Seal Kit Contents:

Item	Description	Qty.
2	Spring	1
6	Seal	1
A	O-ring	1
B	O-ring	1
C	Packing	1
D	Back-up Ring	1
E	U-cup	1
F	Back-up Ring	1
G	O-ring	1
H	Seal	1
J	U-cup	1
K	Back-up Ring	1
L	Back-up Ring	1
M	O-ring	1

ONE YEAR LIMITED WARRANTY

For a period of one (1) year from date of purchase, **SFA Companies** will repair or replace, at its option, without charge, any of its products, which fails due to a defect in material or workmanship under normal usage. This limited warranty is a consumer's exclusive remedy.

Except where such limitations and exclusions are specifically prohibited by applicable law, (1) THE CONSUMER'S SOLE AND EXCLUSIVE REMEDY SHALL BE THE REPAIR OR REPLACEMENT OF DEFECTIVE PRODUCTS AS DESCRIBED ABOVE. (2) **SFA Companies** SHALL NOT BE LIABLE FOR ANY CONSEQUENTIAL OR INCIDENTAL DAMAGE OR LOSS WHATSOEVER. (3) ANY IMPLIED WARRANTIES, INCLUDING WITHOUT LIMITATION THE IMPLIED WARRANTIES OF MERCHANTABILITY AND FITNESS FOR A PARTICULAR PURPOSE, SHALL BE LIMITED TO ONE YEAR, OTHERWISE THE REPAIR, REPLACEMENT OR REFUND AS PROVIDED UNDER THIS EXPRESS LIMITED WARRANTY IS THE EXCLUSIVE REMEDY OF THE CONSUMER, AND IS PROVIDED IN LIEU OF ALL OTHER WARRANTIES, EXPRESS OR IMPLIED. (4) ANY MODIFICATION, ALTERATION, ABUSE, UNAUTHORIZED SERVICE OR ORNAMENTAL DESIGN VOIDS THIS WARRANTY AND IS NOT COVERED BY THIS WARRANTY.

Some states do not allow limitations on how long an implied warranty lasts, so the above limitation may not apply to you. Some states do not allow the exclusion or limitation of incidental or consequential damages, so the above limitation or exclusion may not apply to you. This warranty gives you specific legal rights, and you may also have other rights, which vary from state to state.

