

Please read and save these instructions. Read through this owner's manual carefully before using product. Protect yourself and others by observing all safety information, warnings, and cautions. Failure to comply with instructions could result in personal injury and/or damage to product or property. Please retain instructions for future reference.



WORKSHOP CREEPER SEAT

UNPACKING

After unpacking the OEMTOOLS™ Workshop Creeper Seat, inspect carefully for any damage that may have occurred during transit. Check for loose, missing, or damaged parts. If any damage is observed, a shipping damage claim must be filed with carrier. DO NOT use Creeper Seat if broken, bent, cracked or damaged parts (including labels) are noted. Any Creeper Seat that appears damaged in any way, operates abnormally or is missing parts should be removed from service immediately. If you suspect that the Creeper Seat was subjected to a shock load (a load that was dropped suddenly, unexpectedly, etc.), immediately discontinue use until it has been checked by a factory authorized service center.



24993 - Green
24994 - Black

24995 - White
24996 - Blue

24997 - Orange
24998 - Red

24999 - Yellow

⚠ WARNING

The following safety information is provided as a guideline to help you operate your product under the safest possible conditions. Any tool or piece of equipment can be potentially dangerous to use when safety or safe handling instructions are not known or not followed. The following safety instructions are to provide the user with the information necessary for safe use and operation. Please read and retain these instructions for the continued safe use of your product. Failure to follow instructions listed below may result in serious injury. In addition, make certain that anyone who uses the equipment understands and follows these safety instructions as well.

Explanation of Safety Signal Words

⚠WARNING: Indicates a potentially hazardous situation which, if not avoided, could result in death or serious injury.

⚠CAUTION: Indicates a potentially hazardous situation which, if not avoided, may result in minor or moderate injury.

CAUTION: Used without the safety alert symbol indicates a potentially hazardous situation which, if not avoided, may result in property damage.

NOTES: Provide clarity and helpful information.



WORKSHOP CREEPER SEAT

A IMPORTANT INSTRUCTIONS AND SAFETY RULES

1. Know your product. Read this manual carefully. Learn the product's applications and limitations, as well as potential hazards specific to it.
2. Keep work area clean and well lit. Cluttered or dark work areas invite accidents.
3. Keep children away. All children should be kept away from the work area. Never let a child handle this product.
4. DO NOT operate this product if under the influence of alcohol or drugs. Read warning labels on prescriptions to determine if your judgment or reflexes are impaired while taking drugs. If there is any doubt, DO NOT attempt to operate.
5. Use safety equipment. Eye protection should be worn at all times when operating this product. Use ANSI approved safety glasses. Everyday eyeglasses are NOT safety glasses. Dust mask, non-skid safety shoes, hard hat or hearing protection should be used in appropriate conditions.
6. Wear proper apparel. Loose clothing, gloves, neck-ties, rings, bracelets or other jewelry may present a potential hazard when operating this product. Keep all apparel clear of the product.
7. DO NOT overreach. Keep proper footing and balance at all times when operating this product.
8. Check for damage. Check your product regularly. If part of the product is damaged, it should be carefully inspected to make sure that it can perform its intended function correctly. If in doubt, the part should be repaired. Refer all servicing to a qualified technician. Consult your dealer for advice.
9. Keep away from flammables. DO NOT attempt to operate this product near flammable materials or combustibles. Failure to comply may cause serious injury or death.
10. Store idle product out of the reach of children and untrained persons. This product may be dangerous in the hands of untrained users.
11. Maintain product with care.
12. Keep product dry and clean.
13. DO NOT use a damaged product. Tag damaged products "DO NOT USE" until repaired.
14. Check for misalignment or binding of moving parts, breakage of parts, and any other condition that may affect the product's operation.
15. Use only accessories that are recommended by the manufacturer for your model. Accessories that may be suitable for one product may become hazardous when used on another product.
16. If damaged, have the product serviced before using. Many accidents are caused by poorly maintained products.
17. Product service must be performed only by qualified repair personnel. Service or maintenance performed by unqualified personnel could result in a risk of injury.
18. When servicing a product, use only identical replacement parts. Use of unauthorized parts or failure to follow maintenance instructions may create a risk of injury.
19. Maintain a safe working environment. Keep the work area well lit. Make sure there is adequate surrounding workspace. Keep the work area free of obstructions, grease, oil, trash, and other debris. DO NOT use this product in a damp or wet location.
20. Maintain labels and nameplates on this product. These carry important information. If unreadable or missing, contact OEMTOOLS™ for a replacement.
21. Avoid accidental fire and/or explosion. DO NOT smoke near engine fuel and battery components.
22. We believe the information contained herein to be reliable. However, general technical information is given by us without charge and the user shall employ such information at their own discretion and risk. We assume no responsibility for results or damages incurred from the use of such information in whole or in part. Always refer to specific instructions and technical information supplied by the vehicle manufacturer.

SPECIFIC SAFETY INSTRUCTIONS AND WARNINGS

23. The OEMTOOLS™ Workshop Creeper Seat is specifically designed to be used as a mobile workshop/garage/shed seat ONLY and is not designed for any other purpose. Using the Workshop Creeper Seat for any other purpose could be dangerous and could cause serious injury/death to yourself and others.
24. NEVER stand on, lie on or operate the Workshop Creeper seat at any speed, on rough/exposed uneven surfaces.
25. DO NOT stand on this product. You may fall, which may lead to personal injury.
26. DO NOT let children near the Workshop Creeper Seat. DO NOT allow children to play on, stand upon or climb on seat.
27. Always distribute objects in/on the Workshop Creeper Seat evenly. Uneven weight distribution may cause the seat to tip over.
28. DO NOT step or lean on the drawers.
29. DO NOT alter this product in any way. Any added material or components may imbalance the product, which may lead to property damage and personal injury.
30. Be mindful of sharp edges/welds while assembling and operating this product. Always wear safety gloves and appropriate safety equipment while working with tools and equipment.
31. DO NOT exceed weight capacity (see product specifications). This may lead to product failure and personal injury.
32. Keep this product on a flat, level surface. Failure to do so may cause the product to tip and lead to property damage and personal injury. It is easy to lose control of the Workshop Creeper Seat if attempting to pull a load on an uneven or sloped surface.
33. Beware of imperfections and cracks on the work floor.
34. Should the equipment be used in a manner not specified, the protection provided by the equipment may be impaired and the warranty voided.



WORKSHOP CREEPER SEAT

NOTE: The manufacturer declines any and all responsibility for damage to vehicles or components if said damage is the result of unskillful handling by the operator or of failure to observe the basic safety rules set forth in the instruction manual.

⚠WARNING: Read Rules for Safe Operation and Instructions carefully.

IMPORTANT SAFETY INSTRUCTIONS

The warnings, precautions, and instructions discussed in this manual cannot cover all possible conditions and situations that may occur. The operator must understand that common sense and caution are factors which cannot be built into this product but must be supplied by the operator.

PURPOSE

The OEMTOOLS™ Workshop Creeper Seat is a fully functioning seat with 2 tool tray drawers allowing you to keep everything you need close at hand. Keep your drink or spray cans close by in the 3 can holder. Four swivel wheels roll smoothly across the floor with easy turning for optimum maneuverability.

PRODUCT SPECIFICATIONS

Weight Capacity:	286 Lbs.
Product Weight:	17.6 Lbs.
Tool Drawer Max Weight:	66 Lbs.
Product Dimensions:	11.76" x 11.76" x 16.68"
Construction:	Heavy Gauge Steel

CONTENTS

Vinyl Padded Seat (1), Nut & Bolt Drawer (1), Tool Drawer (1), Support Legs (4), Castors (4), Under Seat Storage Base (1), Can Holder (1) and Fastener Pack (1).

ASSEMBLY

The OEMTOOLS™ Workshop Creeper Seat comes packed flat and requires assembly. Follow the instructions below to assemble your OEMTOOLS™ Workshop Creeper Seat.

1. Lay out all the contents and ensure there are no missing/damaged parts (Fig. 1).



Figure 1

2. Lay the Vinyl Padded Seat (1) on a clean flat surface, with the drawers (2 & 3) facing up (Fig. 2).

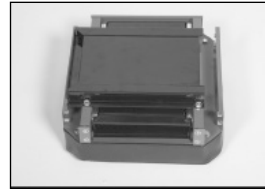


Figure 2

3. Using one of the Support Legs (4), align the 4 holes in the Support Leg with the holes of the Vinyl Padded Seat (1). Insert the supplied bolts, lock washers and flat washers and hand tighten (Fig. 3).

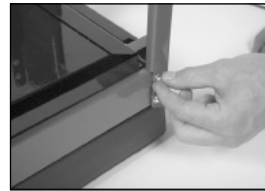


Figure 3

4. Assemble the remaining three Support Legs (4) to the Vinyl Padded Seat (1). Hand tighten the bolts (leave all bolts loose until completely assembled) (Fig. 4).

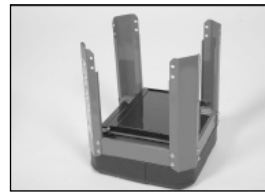


Figure 4

5. Turn over the Under Seat Storage (6) so the storage cavity is facing the floor (Fig. 5) and align the holes with the thread on the Support Legs (4) (Fig. 6).

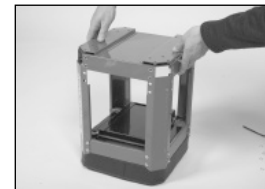


Figure 5

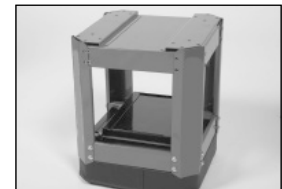


Figure 6

6. Assemble the Under Seat Storage (6) to the Support Legs (4) with the supplied bolts, lock washers and flat washers; hand tighten only (Fig. 7).



Figure 7



WORKSHOP CREEPER SEAT

- Align a Castor (5) with the threads located on the bottom of the Under Seat Storage (6). Using the supplied 4 mm Hex Key, assemble the Castors with the supplied bolts, lock washers and flat washers. Repeat for all Castors (Fig. 8).



Figure 8

- Assemble the Can Holder (7) on an opposite side of one of the drawers. Remove the 4 bolts previously installed (Fig. 9) and align the can holder to the side of the Workshop Creeper Seat.



Figure 9

- Reinstall the 4 bolts, lock washers and flat washers removed in the previous step. Secure the Can Holder (7) to the Workshop Creeper Seat (Fig. 10).



Figure 10

- Turn the Workshop Creeper Seat over onto its wheels to ensure everything is correctly aligned. Tighten all bolts using the supplied 4 mm Hex Key (Fig. 11).



Figure 11

- Your Workshop Creeper Seat is now ready for use. Periodically check to ensure all bolts are tight on your Workshop Creeper Seat.



Figure 12

MAINTENANCE AND STORAGE

The OEMTOOLS™ Workshop Creeper Seat should be stored in a cool and dry area and out of the reach of children.

- Very little maintenance is required for this product. Wipe clean as needed; only use a mild soap to clean, and dry immediately upon cleaning.
- Periodically check to ensure all fasteners are tightened properly.

DISPOSAL

At the end of the useful life of the product, dispose of the components according to all state, federal and local regulations.



WORKSHOP CREEPER SEAT

PARTS LIST AND DIAGRAM



PARTS DESCRIPTION

Figure	Description	Qty.
1	Vinyl Padded Seat	1
2	Pull Out Drawer	1
3	Ball Bearing Slide Drawer	1
4	Support Legs	4
5	Castors	4
6	Under Seat Storage	1
7	Can Holder	1
8	Fastener Pack (Not Shown)	1

NOTE: Not all components of the product are replacement items but are illustrated as a convenient reference for location and position in the assembly sequence.

OEMTOOLS™ and/or its distributors have provided the parts list and assembly diagram as a reference only. Neither OEMTOOLS™ nor its distributors make any representation or warranty of any kind to the buyer and/or user of this tool that he or she is qualified to do any repairs or replace any parts of this product. OEMTOOLS™ and its distributors expressly state that all repairs or parts replacement should be done by certified or licensed technicians. The buyer assumes all risk and liability arising out of his or her repairs or parts replacement to the original production.