

Please read and save these instructions. Read through this owner's manual carefully before using product. Protect yourself and others by observing all safety information, warnings, and cautions. Failure to comply with instructions could result in personal injury and/or damage to product or property. Please retain instructions for future reference.

## **OEMTOOLS® 1,100 LBS. HIGH LIFT TRANSMISSION JACK WITH HANDS-FREE FOOT PUMP**

### **UNPACKING**

After unpacking unit, inspect carefully for any damage that may have occurred during transit. Check for loose, missing, or damaged parts. If any damage is observed, a shipping damage claim must be filed with carrier. **DO NOT** use the OEMTOOLS® 1,100 Lbs. High Lift Transmission Jack with Hands-Free Foot Pump if broken, bent, cracked or damaged parts (including labels) are noted. Any Transmission Jack that appears damaged in any way, operates abnormally, or is missing parts should be removed from service immediately. If you suspect that the Transmission Jack was subjected to a shock load (a load that was dropped suddenly, unexpectedly, etc.), immediately discontinue use until it has been checked by a factory authorized service center.



### **⚠ WARNING**

The following safety information is provided as guidelines to help you operate your Transmission Jack under the safest possible conditions. Any tool or piece of equipment can be potentially dangerous to use when safety or safe handling instructions are not known or not followed. The following safety instructions are to provide the user with the information necessary for safe use and operation. Please read and retain these instructions for the continued safe use of your Transmission Jack. Failure to follow instructions listed below may result in serious injury. In addition, make certain that anyone who uses the equipment understands and follows these safety instructions as well.

### **Explanation of Safety Signal Words**

**⚠ WARNING:** Indicates a potentially hazardous situation which, if not avoided, could result in death or serious injury.

**⚠ CAUTION:** Indicates a potentially hazardous situation which, if not avoided, may result in minor or moderate injury.

**CAUTION:** Used without the safety alert symbol indicates a potentially hazardous situation which, if not avoided, may result in property damage.

**NOTES:** Provide clarity and helpful information.



## 1,100 LBS. HIGH LIFT TRANSMISSION JACK WITH HANDS-FREE FOOT PUMP

### **! IMPORTANT INSTRUCTIONS AND SAFETY RULES**

1. This product is intended only for professional use by personnel trained in performing the service functions for which it is designed. For safety purposes and the prevention of damage to expensive components, it is advised that the user have an understanding of basic automotive repair and a working knowledge of automotive systems.
2. Know your product. Read this manual carefully. Learn the applications and limitations, as well as potential hazards. The use of this equipment is simple and straightforward if you follow the instructions. When operating this Transmission Jack, only use it for its intended purpose. Use common sense, and always stop to think before using a Jack or lifting a vehicle.
3. Maintain labels and nameplates on this Transmission Jack. They carry important information. If unreadable or missing, contact OEMTOOLS® for a replacement.
4. Maintain this equipment with care. Keep it dry, clean, and free from brake fluid, oil, and grease.
5. Check for damage. Check this equipment regularly. If part of the product is damaged, it should be carefully inspected to make sure that it can perform its intended function correctly. If in doubt, the part should be repaired. Refer all servicing to a qualified technician. Consult your dealer for advice.
6. Check for misalignment or binding of moving parts, breakage of parts, and any other condition that may affect the product's operation.
7. Properly maintained tools and equipment are less likely to bind and are easier to control. DO NOT use damaged equipment. Tag damaged equipment "DO NOT USE" until repaired. If damaged, have the equipment serviced before using. Many accidents are caused by poorly maintained tools and equipment.
8. Service must be performed only by qualified repair personnel. Service or maintenance performed by unqualified personnel could lead to personal injury and/or property damage.
9. When servicing a tool, use only identical replacement parts. Use of unauthorized parts or failure to follow maintenance instructions may create a risk of injury.
10. Use only accessories that are recommended by the manufacturer for your model. Accessories that may be suitable for one product may become hazardous when used on another product.
11. Maintain a safe working environment. Keep the work area well lit. Cluttered or dark work areas invite accidents. Make sure there is adequate surrounding workspace. Keep the work area free of obstructions, grease, oil, trash, and other debris. DO NOT use this product in a damp or wet location.
12. Keep children away. All children should be kept away from the work area. Never let a child handle a tool without strict adult supervision.
13. When not in use, store this product out of the reach of children and untrained persons. Tools and equipment may be dangerous in the hands of untrained users.
14. DO NOT operate this equipment if under the influence of alcohol or drugs. Read warning labels on prescriptions to determine if your judgment or reflexes are impaired while taking drugs. If there is any doubt, DO NOT attempt to operate.
15. Use safety equipment. Eye protection should be worn at all times when operating this equipment. Use ANSI approved safety glasses. Everyday eyeglasses are NOT safety glasses. Dust mask, non-skid safety shoes, hard hat or hearing protection should be used in appropriate situations.
16. Wear proper apparel. Loose clothing, gloves, neck-ties, rings, bracelets or other jewelry may present a potential hazard when operating this tool. Keep all apparel clear of the equipment.
17. DO NOT overreach. Keep proper footing and balance at all times when operating this equipment.
18. Keep away from flammables. DO NOT attempt to operate this tool near flammable materials or combustibles. Failure to comply may cause serious injury or death.
19. Avoid accidental fire and/or explosion. DO NOT smoke near engine fuel and battery components.
20. We believe the information contained herein to be reliable. However, general technical information is given by us without charge and the user shall employ such information at their own discretion and risk. We assume no responsibility for results or damages incurred from the use of such information in whole or in part. Always refer to specific instructions and technical information supplied by vehicle manufacturer.
21. The manufacturer declines any and all responsibility for damage to vehicles or components if said damage is the result of unskillful handling by the operator or of failure to observe the basic safety rules set forth in the instruction manual.
22. The warnings, precautions, and instructions discussed in this manual cannot cover all possible conditions and situations that may occur. The operator must understand that common sense and caution are factors which cannot be built into this product, but must be supplied by the operator.
23. This equipment is designed for servicing a variety of vehicles in a safe, convenient manner. However, differences in vehicle makes and models may make it impossible to use this equipment as it is intended. DO NOT attempt to force the use of this equipment on an application for which it is not designed to perform.



# 1,100 LBS. HIGH LIFT TRANSMISSION JACK WITH HANDS-FREE FOOT PUMP

24. The procedures documented in this manual are to serve as guidelines for the use of this equipment. In addition to these guidelines, always follow the manufacturer's recommended procedures when servicing each unique vehicle.
25. Before use, read and understand all warnings, safety precautions, and instructions as outlined in the vehicle manufacturer's service manual. It is beyond the scope of this manual to properly describe the correct procedure and test data for each vehicle.
26. The unexpected movement of a vehicle can injure or kill. When working on vehicles, always set the parking brake or block the wheels.
27. Engine parts that are in motion and unexpected movement of a vehicle can injure or kill. Always stay clear of moving engine parts. Keep hoses and tools clear of moving parts. Hoses and tools can be thrown through the air if not kept clear of moving engine parts.
28. Always perform vehicle service in a properly ventilated area. Never run an engine without proper ventilation for its exhaust. Stop work and take necessary steps to improve ventilation in the work area if you develop momentary eye, nose, or throat irritation as this indicates inadequate ventilation.
5. Before using this product, read the operator's manual completely and familiarize yourself thoroughly with the equipment and its components, and recognize the hazards associated with its use.
6. Wear appropriate safety gear, including heavy duty work gloves and ANSI-approved safety goggles during use.
7. Ensure that the Jack rolls freely. Raise and lower the unloaded Jack throughout the lifting range before putting into service to ensure the pump operates smoothly. Replace worn or damaged parts.
8. DO NOT exceed the weight capacity of the Jack. Make sure weight is evenly distributed. Be aware of dynamic loading! Sudden load movement may briefly create excess load causing product failure. Exceeding the maximum capacity for this product is dangerous and can lead to serious injury or property damage.
9. Never use this device as a work/repair station.
10. Transfer the load immediately to a suitable work station.
11. Assemblies (such as differential with axle or transmission with bell housing) can be bulky and difficult to balance. Lifting or supporting such assemblies, even within weight limit, can create an off-balance situation, causing the Jack to tip over and could lead to serious personal injury or property damage.
12. The load should be evenly distributed on the Jack, and should not extend beyond the area of the caster wheelbase. Always use the chains provided to secure the load. If extra support is required, safety straps (not included) can also be used to secure the work piece.
13. Use only on a hard, level and flat surface capable of bearing the combined weight of the Transmission Jack, the load being lifted, the operator, and any tools being used.
14. If loaded Jack must be moved, be sure that the load is secured by appropriate means, is stable, is in the lowest possible position, is moved over a smooth, hard level surface, and that the lifting platform is level.
15. If you are working and the load becomes off-balance and/or the Jack begins to tip over, DO NOT attempt to catch or lift the load when falling. Serious personal injury can result! In this event, clear the area as quickly and safely as possible in order to avoid injury from the falling load, including getting hit with flying fragments.

## PRODUCT DESCRIPTION

The Hydraulic Transmission Jack is designed to be used as an aid in the removal and installation of automotive and light truck transmissions, transfer cases and transaxles. This telescopic style Transmission Jack is for use under an overhead lift or in a garage pit.

## PRODUCT SPECIFICATIONS

<b>Weight</b>	1,100 Lbs.
<b>Lift</b>	47" – 79"
<b>Transmission Jack</b>	93 Lbs.

**▲WARNING:** NEVER use for any purpose other than those uses outlined above!

## SPECIFIC SAFETY INSTRUCTIONS AND WARNINGS

1. Before each use, inspect the general condition of the Transmission Jack. Check for oil leaks, Jack operation, loose components, free rotation and pivoting of Saddle adjustment components. If a problem occurs, have the problem corrected before further use.
2. To prevent serious injury, DO NOT use a damaged or malfunctioning Jack.
3. Always evaluate your task before using this Jack. This Jack is designed to support a transmission or a differential as individual components. Use as intended only.
4. Verify that the product and application are compatible; if in doubt, call OEMTOOLS.



# 1,100 LBS. HIGH LIFT TRANSMISSION JACK WITH HANDS-FREE FOOT PUMP

16. To prevent serious injury, DO NOT use a damaged or malfunctioning Jack.
17. Make sure the casters are blocked before use.
18. The Transmission Jack is not designed to lift or lower a vehicle.
19. If in doubt about the safety of your project, we advise you to have the work done by a professional familiar with applicable safety practices.

## ASSEMBLY INSTRUCTIONS

1. Fit each Caster (53) to the Legs (52) using Nuts (49), Lock Washers (50), and Flat Washers (51), then tighten.
2. Attach the 2 Legs (52) to the Transmission Jack Base (18) using Bolts (56), Lock Washers (55), and Flat Washers (54), then tighten.
3. Install the Saddle Assembly (17) onto the top of the Piston Rod (9), then tighten Lock Bolt.
4. Remove the R Clips (36) and Pedal Pins (35) from Foot Pedal (37). Attach the Foot Pedal to the Pump Core (21) and Connecting Bar (39) using the Pedal Pins and R Clips. Press the Foot Pedal and remove the 2 Screws holding the Spacer in place (figure 1), then release the Foot Pedal.

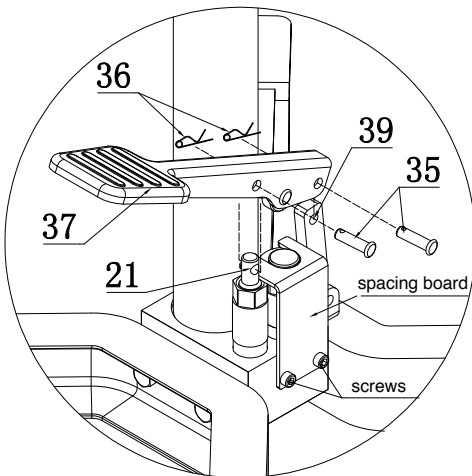


figure 1

## OPERATION

1. Follow the instructions for removal and installation of transmission, transfer case or transaxle according to the vehicle manufacturer's service manual.
2. Prior to initial use, jack up the Saddle and attempt to lower it (using the Release Knob). Doing so will familiarize you with the control functions and the Jack.
3. Once the vehicle is safely and properly secured, position the Transmission Jack underneath the vehicle.

4. Raise the Jack by operating the Foot Pump until the Saddle reaches the component. After making contact with the transmission, make sure it is centered within the brackets on the Saddle Plate. Use Adjustment Knobs to position Saddle Base.
5. After contact, lift the Jack slightly to transfer the weight of the transmission from the vehicle chassis to the Transmission Jack. Secure the chain assembly around the component and make sure the load is centered on the adapter.
6. Remove transmission fasteners, freeing it from the vehicle. Make sure there is nothing to restrict the movement of the transmission.
7. Back transmission away to free from engine.
8. Check the Saddle, making sure it is securely holding and aligned with the transmission and not showing any signs of stress. Carefully lower transmission and Saddle by turning the Release Knob.

**NOTE:** Before lowering load, check to ensure all tools and personnel are clear and it is safe to lower the load.

9. Secure the Chain tightly over the transmission and safely remove the Transmission Jack.
10. After removal, lower the Jack to the lowest possible point.

**WARNING:** The Jack is designed to lift loads only for short periods of time. DO NOT use it to suspend a load for more than 30 minutes at a time.

The manufacturer and/or distributor have provided the parts list and assembly diagram in this manual as a reference tool only. Neither the manufacturer nor distributor makes any representation or warranty of any kind to the buyer that he or she is qualified to make any repairs to the product, or that he or she is qualified to replace any parts of the product. In fact, the manufacturer and/or distributor expressly states that all repairs and parts replacements should be undertaken by certified and licensed technicians, and not by the buyer. The buyer assumes all risk and liability arising out of his or her repairs to the original product or replacement parts thereto, or arising out of his or her installation of replacement parts thereto.

## MAINTENANCE

**IMPORTANT:** Use only good grade hydraulic Jack oil. Avoid mixing different types of fluid and NEVER use brake fluid, turbine oil, transmission fluid, motor oil or glycerin. Improper fluid can cause premature failure of the Jack and the potential for sudden and immediate loss of load.

## ADDING OIL

1. With Saddle fully lowered, set Jack in its upright, level position. Remove oil filler plug.
2. Fill until oil is level with the oil filler hole; reinstall oil filler plug.



## 1,100 LBS. HIGH LIFT TRANSMISSION JACK WITH HANDS-FREE FOOT PUMP

### CHANGING OIL

For best performance and longest life, replace the complete fluid supply at least once per year.

1. With Saddle fully lowered, remove oil filler plug.
2. Lay the Jack on its side and drain the fluid into a suitable container.

**NOTE:** Dispose of hydraulic fluid in accordance with local regulations.

3. Set the Jack in its level position. Fill until oil is level with the oil filler hole; reinstall oil filler plug.

### LUBRICATION

A periodic coating of light lubricating oil to pivot points, axles and hinges will help prevent rust and ensure that casters and pump assemblies move freely.

### CLEANING

Periodically check the Pump Piston and Ram for signs of rust or corrosion. Clean as needed and wipe with an oily cloth.

**NOTE:** Never use sandpaper or abrasive material on these surfaces!

### STORAGE

When not in use, store the Jack with Saddle fully lowered. Always store the Jack in a well-protected area where it will not be exposed to inclement weather, corrosive vapors, abrasive dust, or any other harmful elements.

### INSPECTION

It is recommended that an annual inspection be done by qualified technicians.

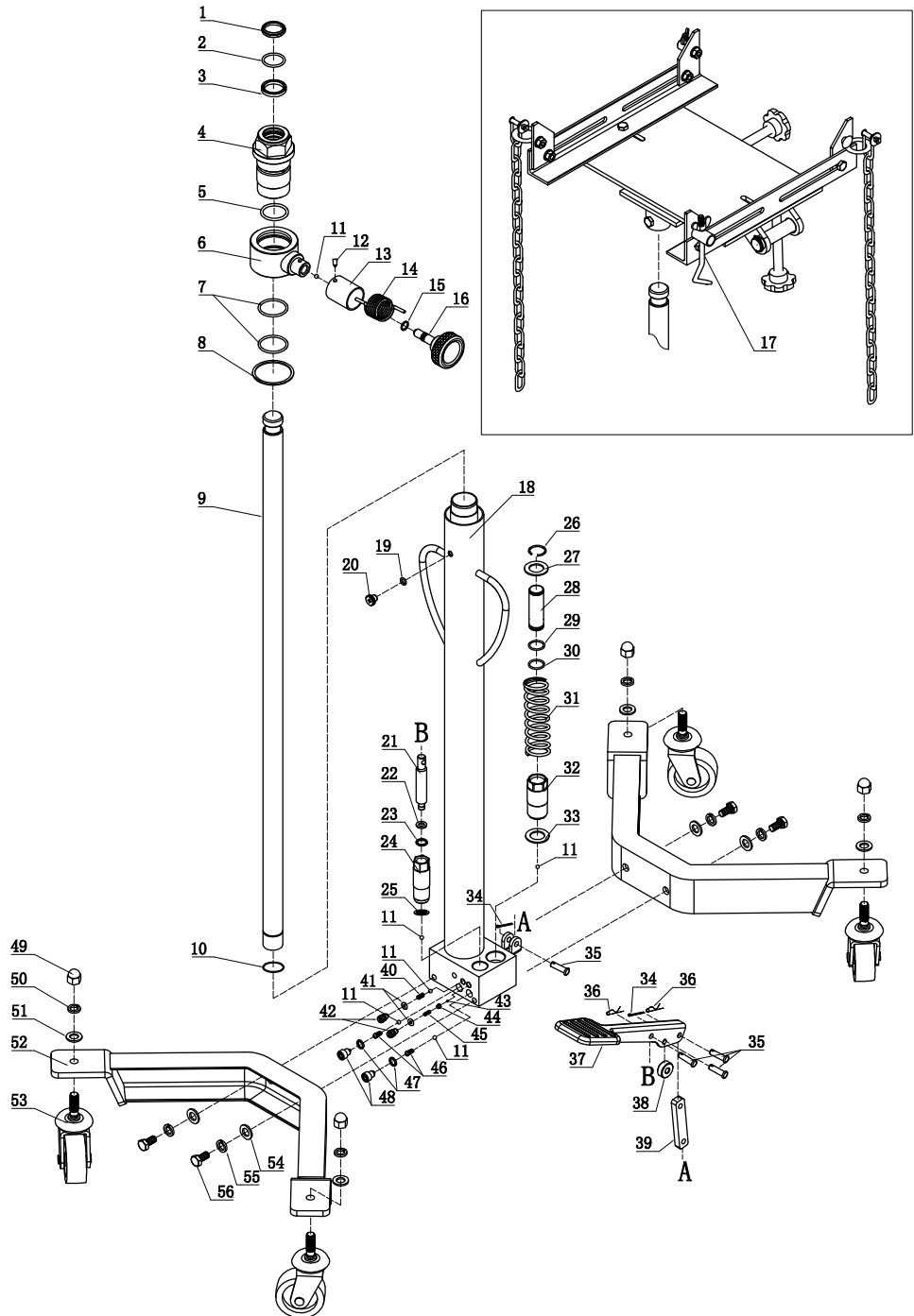


# 1,100 LBS. HIGH LIFT TRANSMISSION JACK WITH HANDS-FREE FOOT PUMP

## BASE PARTS LIST

FIGURE	DESCRIPTION	QTY
1	Dust Seal	1
2	O-Ring	1
3	U-Ring	1
4	Round Nut	1
5	O-Ring	1
6	Cylinder Cover	1
7	O-Ring	2
8	Washer	1
9	Piston Rod	1
10	Retaining Ring	1
11	Steel Ball	6
12	Screw	1
13	Spring Sleeve	1
14	Spring	1
15	O-Ring	1
16	Release Valve	1
17	Saddle Assembly	1
18	Base Assembly	1
19	O-Ring	1
20	Air Vent Screw	1
21	Pump Core	1
22	PTFE Washer	1
23	U-Ring	1
24	Pump Core Seat	1
25	Copper Pad	1
26	Retaining Ring	1
27	Washer	1
28	Small Piston	1
29	Nylon Ring	1
30	O-Ring	1
31	Spring	1
32	Pump Core Seat	1
33	Copper Pad	1
34	Cotter Pin	2
35	Pedal Pin	4
36	R Clip	2
37	Foot Pedal	1
38	Roller	1
39	Connecting Bar	1
40	Spring	1
41	O-Ring	2
42	Screw	2
43	Steel Ball	1
44	Ball Cup	1
45	Spring	1
46	Spring	2
47	Copper Pad	2
48	Screw	2
49	Nut	4
50	Lock Washer	4
51	Flat Washer	4
52	Leg	2
53	Caster	4
54	Flat Washer	4
55	Lock Washer	4
56	Bolt	4

## BASE PRODUCT LAYOUT



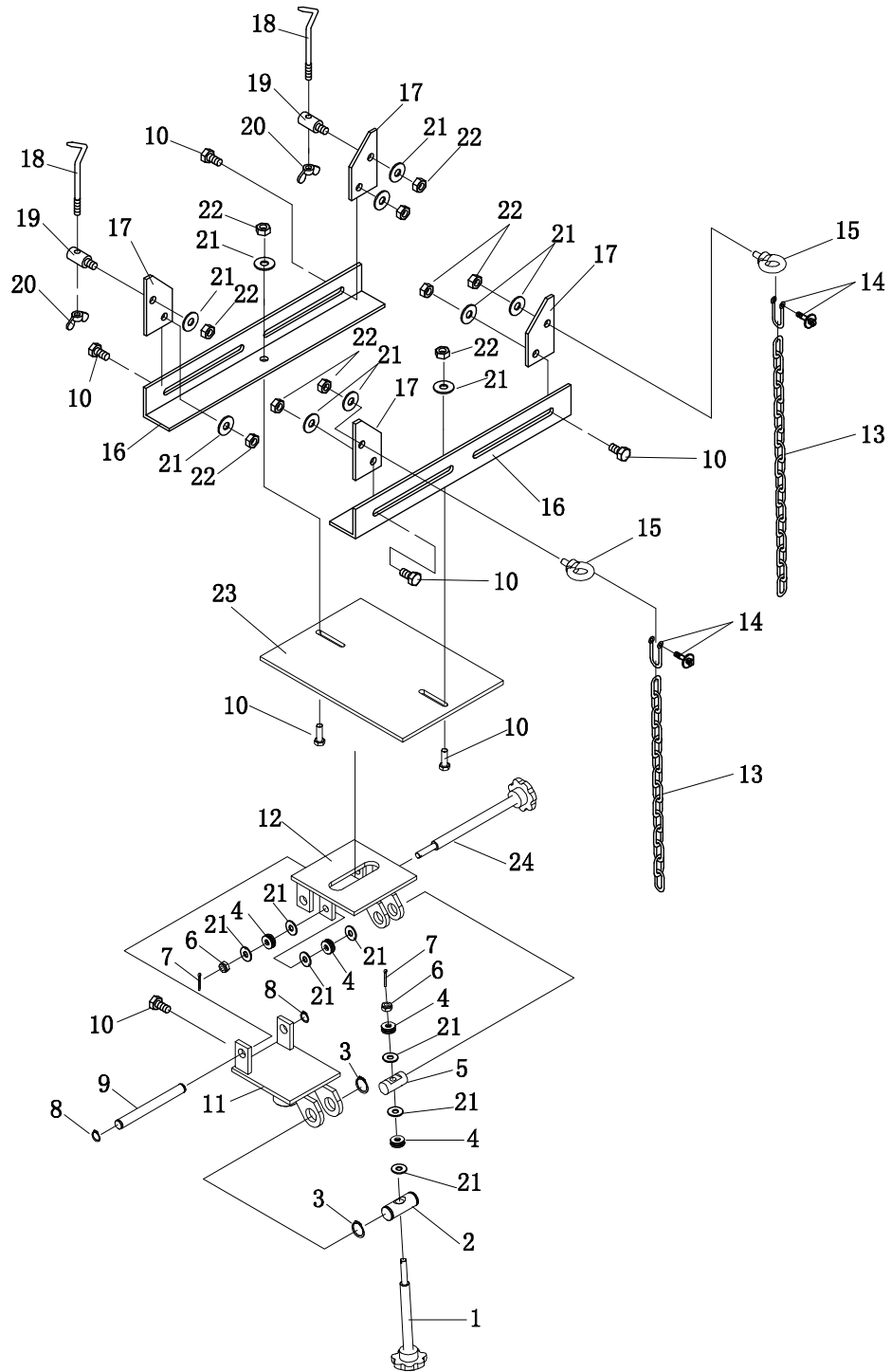


# 1,100 LBS. HIGH LIFT TRANSMISSION JACK WITH HANDS-FREE FOOT PUMP

## SADDLE PARTS LIST

FIGURE	DESCRIPTION	QTY
1	Short Adjustable Screw	1
2	Adjustable Nut	1
3	O-Ring	2
4	Bearing	4
5	Stationary Rod	1
6	Nut	2
7	Cotter Pin	2
8	Retaining Ring	2
9	Connecting Rod	1
10	Bolt	7
11	Bottom Plate	1
12	Saddle	1
13	Chain	2
14	D-type Buckle	2
15	Eye Bolt	2
16	Angle Plate	2
17	Side Plate	4
18	Hook Screw	2
19	Hook Bolt	2
20	Butterfly Nut	2
21	Flat Washer	17
22	Nut	10
23	Saddle Plate	1
24	Long Adjustable Screw	1

## SADDLE PRODUCT LAYOUT



**NOTE:** Not all components of the Transmission Jack are replacement items, but are illustrated as a convenient reference for location and position in the assembly sequence.

Use caution when troubleshooting a malfunctioning Jack. Stay well clear of the supported load. Completely resolve all problems before use. If the Jack is malfunctioning, have a qualified technician inspect and repair the Jack before use. After the Jack is repaired: Test it carefully without a load by raising it and lowering it fully, checking for proper operation.