

**NRG**  
INNOVATIONS



**NRG**  
INNOVATIONS

**CARBON**

**AW**  
ADVANCED WEIGHT MANAGEMENT

© 2018 NRG Innovations.

All rights reserved. All designs, patents and logos are the exclusive property of NRG Innovations, unless otherwise noted.

Some rights reserved. Most images displayed in the catalog are used to display and highlight the NRG products.





Advance Tuner Warehouse Inc. was founded in 2003 by a group of auto enthusiasts, and business professionals in Southern California. Their main focus was to supply the growing automotive scene with high quality, affordable auto parts and accessories for performance and customization. To meet this demand, the NRG Innovations brand was born offering a wide range of innovative, and stylish automobile parts and accessories to the auto enthusiast. Whether it is the tuning, the drifting, or the growing 4x4 off road market, NRG Innovations manufactures parts and accessories that make sure that the customer will stand out from the crowd. We are most notably known for our award winning products that include our US patented short hubs and steering wheel quick release systems, our wide selection of steering wheels, FIA and SFI approved products, and ground breaking accessories that include lug nuts, tow hooks, and racing seats to name a few. Always moving forward, our objective at NRG Innovations is to engineer, and manufacture high quality auto accessories, while offering industry leading customer service that sets us apart from the competition.





# SFI approved & certified QUICK RELEASE



**SRK-200-IBK**  
SFI Approved Quick Release  
Black | Titanium Ring



Easier release w/ one hand  
Height: 2.22in  
1/4 in shorter than original SRK-200



**SRK-SWH**  
Short Hub | Stainless Steel  
Universal (3/4 Diameter Shaft)

**SRK-SWH-I**  
Short Hub | Stainless Steel  
Universal (5/8 Diameter Shaft)

# SFI approved & certified SEATBELTS

SPEC. 16.1



**SBH-R5PCBK**  
SFI 5 Point Latch Link  
Black



**SBH-R6PCBK**  
SFI 5 Point Cam Lock  
Black



**SBH-RSGPCBK**  
FIA 6 Point Cam Lock  
Black



# FIA approved GLOVES



**GS-RS510WT-L**  
FIA Approved Racing Gloves  
White

ALL FIA Gloves are available  
in X-LARGE size

**GS-RS500BL-L**  
FIA Approved Racing Gloves  
Blue

Available: GS-RS500BK | GS-RS500WT



**GS-500**  
SFI Approved Racing Gloves  
Black & Blue Stitch

# FIA approved SEATS



**FRP-RS500**  
FIA Approved Racing Seat  
High Quality Fabric | Black Pads & Leather Lining  
Large Seat

**FRP-RS600**  
FIA Approved Racing Seat  
High Quality Fabric | Black Pads & Leather Lining  
Large Seat



# RYAN LITTERAL

RYAN LITTERAL  
FORMULA DRIFT DRIVER  
NRG SPONSORED DRIVER



**ST-018S-RL**  
Steering Wheel | Suede



**SRK-200BK-RL**  
Quick Release

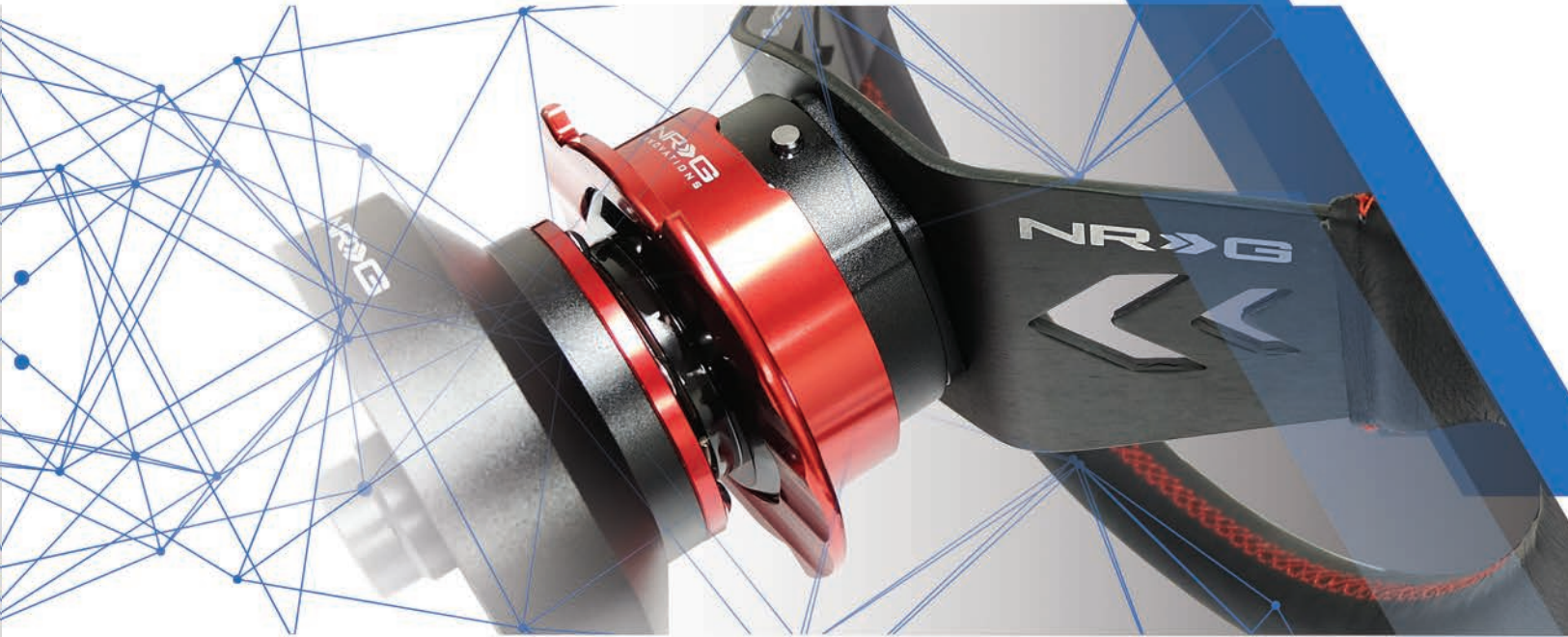


## TABLE OF CONTENTS

3 - 4	<b>FEATURED</b> SFI Approved & Certified   FIA Approved Products
7 - 10	<b>QUICK RELEASE</b> Gen 2.0   2.1   2.5   2.8   2.9   3.0
11 - 12	<b>SHORT HUB</b> New Short Hubs   Adapter Application List
13 - 20	<b>STEERING WHEELS</b> New Reinforced Series Carbon Fiber Series Deep Dish Series Colored Wood   Wood Series Accessories
23 - 26	<b>RACING SEATS</b> FRP Bucket   Reclinable Seat Dimension   Bracket Application List
27 - 32	<b>INTERIOR PRODUCTS</b> Seatbelt Harness   Harness Bar   Wings Shift Knobs   Hand Brake Handle Cover Pedal Pad Cover Plates Floor Mats
33 - 34	<b>EXTERIOR PRODUCTS</b> Lugnuts   Tow
35 - 36	<b>UNDER THE HOOD</b> Radiator Diversion Panel Engine Torque Damper Hood Damper   Radiator Cap Cover Magnetic Oil Drain Plugs Oil Catch Tank   Power Steering Tank
37 - 38	<b>ACCESSORIES</b> Fuel Pressure Regulator Ground Wire System FRP Adapter   FRP Gauge
41	<b>NRG COLLECTION</b> Apparel & More



# QUICK RELEASE



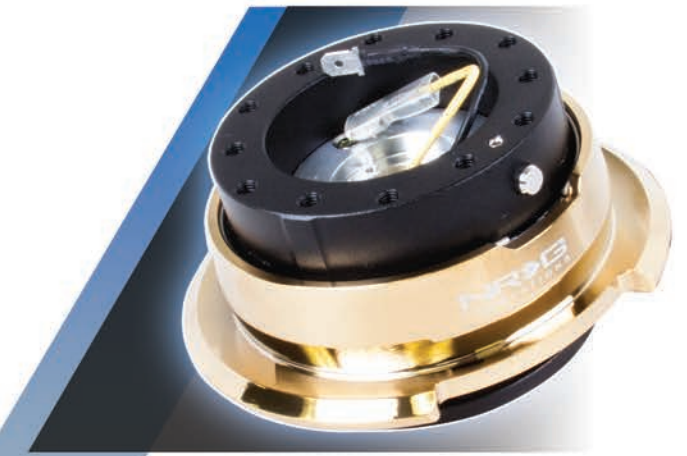
## GENERATION 2.1 QUICK RELEASE



US PATENT # US7527293  
**SRK-210BL-BK**  
 Generation 2.1  
 Studded Pyramid Body ring | Pyramid Series  
 Ring Colors: Black (BK), Chrome Gold (CG), Glow in the Dark (GL), Neochrome (MC)

\*OTHER QUICK RELEASE COLOR COMBINATIONS WITH THE THREE RINGS ARE AVAILABLE UPON REQUEST AND/OR AVAILABILITY.

## GENERATION 2.8 QUICK RELEASE



US PATENT # US7527293  
**SRK-280BK-CG**  
 Generation 2.8  
 Diamond Cut Black flared ring

\*OTHER QUICK RELEASE COLOR COMBINATIONS ARE AVAILABLE UPON REQUEST AND/OR AVAILABILITY.

## QUICK RELEASE GENERATION 2.0



**SRK-200BK**  
 Generation 2.0  
 Standard Release ring

\*OTHER QUICK RELEASE COLOR COMBINATIONS ARE AVAILABLE UPON REQUEST AND/OR AVAILABILITY.

## QUICK RELEASE GENERATION 2.5



**SRK-250CF**  
 Generation 2.5  
 Upgraded flared ring | Underside grooved handles

\*OTHER QUICK RELEASE COLOR COMBINATIONS ARE AVAILABLE UPON REQUEST AND/OR AVAILABILITY.

## GENERATION 2.9 QUICK RELEASE



US PATENT # US7527293  
**SRK-290BK-BK/CG**  
 Generation 2.9  
 Diamond Cut Black flared ring | Strikeout Edition  
 3 Colored Stripes || Colors : Chrome Gold, Blue or Red Stripes

\*OTHER QUICK RELEASE COLOR COMBINATIONS ARE AVAILABLE UPON REQUEST AND/OR AVAILABILITY.

## GENERATION 3.0 QUICK RELEASE



US PATENT # US7527293  
**SRK-650BK**  
 Generation 3.0  
 Sleek ring design w/ 2 larger levers

\*OTHER QUICK RELEASE COLOR COMBINATIONS ARE AVAILABLE UPON REQUEST AND/OR AVAILABILITY.





**QUICK RELEASE THIN VERSION**



**SRK-400BK**  
Thin Version | Height: 1.25 in  
\*Not compatible with NRG Short Hub Adapter or Quick Lock System



**QUICK TILT WITH LOCK**



**SRT-100SL**  
Patented Tilt Locking Mechanism w/ Lock  
Available in Black : SRT-100BK



**QUICK LOCK SYSTEM**



**SRK-2018K**  
2018 Quick Lock System  
Rotating top to hide key area

\*Not compatible with NRG Thin Version Quick Release or Quick Tilt System

**QUICK LOCK SYSTEM**



**SRK-101MC**  
Quick Lock System  
\*Not compatible with NRG Thin Version Quick Release or Quick Tilt System



ADD A  
*Splash of Style*

When quality comes FIRST, it becomes a work of art!  
With our new line of products, NRG Innovations presents safety, strength and style.



# SHORT HUB ADAPTERS

# SHORT HUB ADAPTER LIST



**SRK-123H**  
Lotus S2 V6 Exige Roadster  
Lotus Evora

Lotus S2 2ZZ Elise | 04-11  
Lotus S2 1ZZ Elise | 06-10  
Lotus S2 1.6 Elise | 11-14



**SRK-161H**  
Ford F-Series | 92-97



**SRK-162H**  
Ford F-Series | 97-02



**SRK-165H**  
Hyundai Veloster | 2011+  
Hyundai Genesis Coupe | 2008+



**SRK-173H**  
Mercedes SL Class / 230 | 03-08  
G Class / W463 | 08-12  
CLS Class / W219 | 06-08  
CLK Class / W209 | 05-09  
E Class / W219 | 06-08  
Dodge Charger | 08-10



**SRK-185H**  
Volkswagen Type-1 | 60-74



**SRK-189H**  
Porsche Boxster | 85<sup>1/2</sup>-04



**SRK-170H-SL**  
Chevrolet Stepside | 1969+  
Chevy | GMC | Dodge | Jeep



**SRK-4SPBK**  
Steering Wheel Hub Extension  
Spacer | Black | 4 In.

SRK-100H	
90-98	Eagle Talon
90-03	Mitsubishi Eclipse
86-98	Mitsubishi Galant
88-02, 04	Mitsubishi Lancer
91+	Mitsubishi Mirage
ALL	Mitsubishi 3000
91+	Mitsubishi Montero
ALL	Mitsubishi Pickup
ALL	Tredia   Cordia   Starion
ALL	Mitsubishi Van
90-94	Plymouth Laser
ALL-07	Forester
ALL-09	Subaru Legacy
99-07	Subaru Impreza WRX
SRK-101H	
ALL (But 03)	Mitsubishi EVO 7   8   9
SRK-102H*	
ALL	Mitsubishi EVO X
08+	Mitsubishi Ralliart
08+	Mitsubishi Lancer
SRK-105H*	
2008-14	Subaru Forester
2008-14	Subaru WRX STI
SRK-106H*	
2010+	Subaru Legacy
2015+	Subaru Forester
2015+	Subaru WRX
SRK-110H	
92-95	Honda Civic
ALL	Honda Del Sol
94-01	Acura Integra
92-96	Honda Prelude
90-93	Honda Accord
SRK-120H	
87-00	Toyota Camry
82-93	Toyota Celica
84-00	Toyota Corolla
83-92	Toyota Cressida
89-96	Toyota 4-Runner
92-97	Toyota Paseo
87-96	Toyota Pickup
91-96	Toyota Land Cruiser
90-93	Toyota MR-2
ALL	Toyota MR-S
94-98	Toyota Supra
95-04	Toyota Tacoma
90-98	Toyota Tercel
ALL	Toyota Yaris
SRK-121H	
94-05	Toyota Celica
85-90	Toyota Land Cruiser
86-93	Toyota Supra
ALL	SC
SRK-123H	
ALL	Lotus S2 V6 Exige Roadster
ALL	Lotus Evora
2004-11	Lotus S2 2ZZ Elise
2006-10	Lotus S2 1ZZ Elise
2011-14	Lotus S2 1.6 Elise
SRK-125H*	
ALL	Lexus IS, GS
ALL	Scion XA   XB   XD   Tc

SRK-125* (Continuation)	
2012+	Scion FR-S
2012+	Subaru BR-Z
2001+	Toyota Camry   Corolla
ALL	Toyota Matrix
2005+	Toyota Tacoma
2006+	Toyota FJ Cruiser
1999+	Toyota Tundra
SRK-130	
97-03	Acura CL
94-02	Honda Accord
96-00	Honda Civic EK
97-01	Honda Prelude
99-04	Honda Odyssey
SRK-131H*	
ALL	Acura RSX / TSX
97-08	Acura TL   RL
2003-08	Acura Integra
2001-11	Honda Civic EP
2003-12	Honda Accord
2001-07	Honda Fit
ALL	Honda CR-V   CR-Z   S2000
SRK-132H*	
2012-15	Honda Civic
SRK-135H	
2013-15	Honda Accord
15+	Honda Fit   Civic
13+	Acura ILX
SRK-140H	
90+	Nissan 200SX
89-98	Nissan 240SX (Non Hicas)
90+	Nissan 300ZX (Non Hicas)
89-04	Nissan Skyline (Non Hicas)
93-06	Nissan Altima
ALL	Infiniti G20
88-97	Nissan Pickup
89-98	Nissan Maxima
87-90	Nissan Pulsar
91-96	Nissan Sentra
SRK-141H*	
06+	Nissan Sentra SE-R
ALL	Nissan 350Z   370Z
ALL	Infiniti G35   G37
ALL	Nissan Cube   Versa
ALL	Nissan Armada
ALL	Nissan Juke
SRK-142H	
ALL	Datsun 510   620   720
ALL	Datsun 240Z   260Z   280Z
SRK-150H*	
ALL	Acura NSX
SRK-160H	
ALL	Hyundai Accent   Tiburon
ALL	Hyundai Genesis
ALL	Kia Forte   Rio   Rondo
ALL	Kia Optima   Spectra
ALL	Mazda 626   Protégé
ALL	Mazda Miata
ALL	Mazda RX-7   RX-8
ALL	Mazda MX-3   MX-6
SRK-161H	
92-97	Ford F-150
SRK-162H	
97-02	Ford F-150

SRK-165H	
2008+	Hyundai Genesis Coupe
2011+	Hyundai Veloster
SRK-170H	
69-94	Dodge   GM   Chevy
1969+	Buick   Cadillac
1969+	Oldsmobile
ALL	Chevrolet Blazer
69-05	Chevrolet Camaro
82-94	Chevrolet Cavalier
69-05	Chevrolet Corvette
ALL	Chevrolet Suburban
ALL	Dodge Neon *1
ALL	Dodge Viper
00+	PT Cruiser *2
ALL	GMC Jimmy
ALL	GMC Yukon
< 92	GMC S-15
93+	GMC Sonoma
ALL	GMC Suburban
ALL	GMC Typhoon
ALL	Jeep Cherokee
ALL	Jeep Renegade
86-95	Jeep Wrangler
ALL	Jeep CJ 5   6   7
ALL	Pontiac Fiero
69-05	Pontiac
ALL	Ididit Customs
ALL	Flaming River
SRK-172H	
66-77	Ford Bronco
69-73	Ford Mustang
67-72	Ford F-Series
SRK-173H*	
2008-10	Dodge Charger
2013+	Dodge Dart
2006+	Dodge Magnum   Avenger
2006+	Dodge Challenger
2005-09	Mercedes CLK Class / W209
2003-08	Mercedes SL Class / W230
2008-12	Mercedes G Class / W463
2007-08	Mercedes E Class / W211
2005-09	Mercedes CLS Class / W219
SRK-174H	
79-04	Ford Mustang *1
SRK-175H	
ALL	Ford Focus   Fiesta
05+	Ford Mustang
ALL	Mazda 3
ALL	Jaguar X Type
SRK-177H	
2006-14	Chevrolet Corvette C6
2005-10	Chevrolet Cobalt
2003-07	Cadillac CTS
SRK-178H*	
2010+	Chevrolet Camaro
All	Chevrolet Sonic   Cruze
SRK-180H	
98+	Audi A3   A4
97-00	Audi A6
97-03	Audi A8
98+	VW Beetle
97-00	Audi A6
97-03	Audi A8

SRK-181H	
93-01	Seat Ibiza
89-95	Volkswagen Corrado
89-98	VW Golf
85-98	VW Jetta
SRK-188H	
90-96	VW Passat
SRK-185H	
60-74	Volkswagen Type 1
SRK-186H	
ALL	Volkswagen MK1   MK2
SRK-188H	
79-83	Porsche 911
SRK-189H	
85.5-04	Porsche Boxster
SRK-190H	
90-93	Acura Integra
86-91	Honda CRX   Civic
87-01	Honda Prelude
86-90	Honda Accord
SRK-195H	
68-76	Mercedes 200   550
68-76	Mercedes 280C   380
77-93	Mercedes W123   W201
SRK-E30H	
86-90	BMW M3
83-90	BMW 318i
84-90	BMW 325e   es   i   is
85-88	BMW 528e
85-88	BMW M5   5 Series
87	BMW 6 Series
87-93	BMW 7 Series
SRK-E36H	
95-98	BMW M3   Z3
91-98	BMW 318   325   328
ALL	BMW 840i   850i   850ci
95-04	BMW E39 (540)
SRK-E46H	
2001-06	BMW M3   Z4   330
2002-06	Mini Cooper
ALL	BMW E90
SRK-F50H*	
07+	Fiat Abarth   500
SRK-RZRH	
ALL	Polaris RZR 800   900   1000
ALL	Polaris Ranger
ALL	John Deere Gator
SRK-SSH	
15+	Polaris Slingshot
SRK-YXZH	
15+	Yamaha YXZ
SRK-SWH	
ALL	Universal 3/4 Diameter
ALL	SRK-SWH-1
ALL	Universal 5/8 Diameter
SRK-CANH	
2011-14	Can-AM Commander
2013-14	Can-AM Maverick
SRK-MX3H	
ALL	Can-AM Maverick X3

Legend  
\* - With Resistor  
\*1 - Need Spacer (SRK-500)  
\*2 - Needs Hub Mod



# STEERING WHEELS

REINFORCED DEEP DISH

REINFORCED DEEP DISH



**RST-055R-BKRS**  
Reinforced  
Black 3 Spoke w/ Slits | 3" Deep  
Premium Black Leather | Red Stitch | 350mm



**RST-036BK-S**  
Reinforced Sport  
Black Chrome Spoke | 3" Deep Dish  
Premium Suede | Red Stitch | 350mm

**RST-006BL** Reinforced Sport Deep Dish  
Blue 3 Spoke w/ Holes | 3" Deep Dish | Premium Leather | Black Stitch | 350mm



REINFORCED DEEP DISH

REINFORCED DEEP DISH

REINFORCED DEEP DISH

REINFORCED DEEP DISH



**RST-023R**  
Reinforced  
5mm Spoke | 2" Deep Dish  
Premium Leather | Black Stitch | 350mm



**RST-022R-Y**  
Reinforced | 2 Spoke  
5mm Spoke | 3" Deep Dish  
Premium Leather | Black Stitch | 350mm  
NRG "Arrow" Cut out in the spoke  
Available in RST-022S-Y (Premium Black Suede)



**RST-036MB-R**  
Reinforced Race  
Odi Bakchis [Pro Formula Drift]  
3 Solid Spoke | 350mm | 3" Deep Dish  
Premium Black Leather w/ Baseball Stitch



**RST-021R-SUN-Y**  
Reinforced Sport  
Floral Dipped 2 Spoke | Top Center Yellow Mark  
Premium Black Leather | 330mm | 2" Deep  
Available in RST-021S-SUN-Y (Premium Black Suede)





**REINFORCED DEEP DISH**



**RST-01BR-RS**

Reinforced Sport  
3 Spoke | 4mm Spoke | 350mm | 3" Deep  
Premium Black Leather w/ Red Stitch

**RST-01BS-RS**

Reinforced Sport  
3 Spoke | 4mm Spoke | 350mm | 3" Deep  
Premium Black Suede w/ Red Stitch

**REINFORCED DEEP DISH**



**RST-01GR-OR**

Reinforced Sport  
Orange 3" Deep Spoke | Top Double Orange Mark  
Premium Black Leather | Orange Stitch | 350mm

Available in  
**RST-01GS-OR**  
(Premium Black Suede)



**CARBON FIBER SERIES**



**ST-010CF-MC**

Carbon Fiber Series  
Neochrome 3 Spoke w/ Open Slits  
Wet Carbon Fiber | 320mm

**ST-010CFBS**

Carbon Fiber Series  
Black 3 Spoke w/ Open Slits | 320mm  
Wet Carbon Fiber & Leather | Black Stitch

Available: ST-010CFRS (Red Stitch)

**CARBON FIBER SERIES**



**ST-009CF/BK**

Carbon Fiber Series  
Wet Carbon Fiber | Flat Bottom  
320mm

**ST-009CF/MB**

Carbon Fiber Series  
Matte Carbon Fiber | Flat Bottom  
320mm

**REINFORCED**



**RST-01ZR**

Reinforced Sport  
Premium Leather | Black Stitch | 320mm

Available in Red Stitch  
RST-01ZR-RD (Leather) | RST-01ZR-RD (Suede)

**RST-01ZS**

Reinforced Sport  
Premium Black Suede | Black Stitch  
320mm

Available in Blue Stitch RST-01ZR-BL

**REINFORCED**



**RST-009R-RS**

Reinforced Sport  
Premium Leather | Black 5mm Spoke  
Flat Bottom | Red Stitch

Available in Black Stitch  
RST-009R (Leather) | RST-0009S (Suede)

**RST-009S-RS**

Reinforced Sport  
Premium Suede | Black 5mm Spoke  
Flat Bottom | Red Stitch

**CARBON FIBER SERIES**



**ST-009CFRS**

Carbon Fiber Series  
Wet Carbon Fiber & Leather | Flat Bottom  
Red Stitch | 320mm

**ST-009CFBS**

Carbon Fiber Series  
Wet Carbon Fiber & Leather | Flat Bottom  
Black Stitch | 320mm

**CARBON FIBER SERIES**



**ST-310CFRS**

Carbon Fiber Series  
Wet Carbon Fiber & Leather Handles  
Red Stitch | 315mm

**ST-310CFBS**

Carbon Fiber Series  
Wet Carbon Fiber & Leather Handles  
Black Stitch | 315mm



**REINFORCED DEEP DISH**



**RST-055BK-BK**

Reinforced  
Black 3 Spoke w/ Slits | 5mm Spoke  
Black Wood Finish | 350mm | 3" Deep

**RST-055BR-BK**

Reinforced  
Black 3 Spoke w/ Slits | 5mm Spoke  
Wood Finish | 350mm | 3" Deep



Available in Neochrome RST-055BK-MC  
RST-055BR-MC

**REINFORCED DEEP DISH**



**RST-006RR-BS-B**

Reinforced Sport  
3 Spoke | Black 5mm Spoke w/ Round Holes  
Premium Red Leather w/ Black Stitch  
Black Top Center Mark | 350mm | 3" Deep

**RST-006WT-Y**

Reinforced Sport  
3 Spoke | Silver 5mm Spoke w/ Round Holes  
Premium White Leather w/ White Stitch  
Yellow Top Center Mark | 350mm | 3" Deep

**COLORED WOOD SERIES**



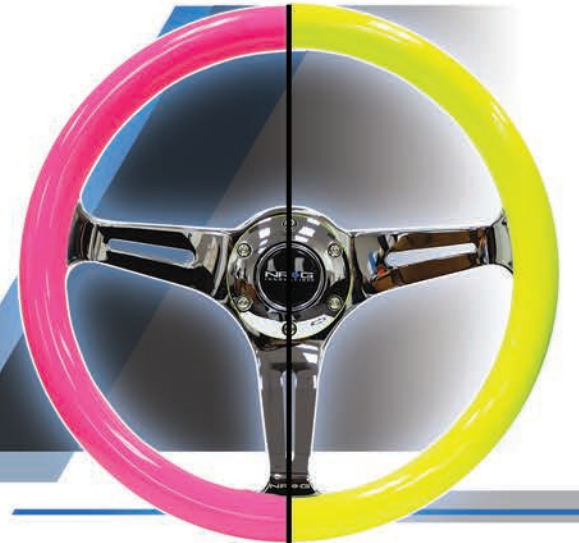
**ST-015CG-BK**

Colored Wood Series  
Chrome Gold 3 Spoke w/ Open Slits  
Black Wood | 350mm

**ST-015CG-WT**

Colored Wood Series  
Chrome Gold 3 Spoke w/ Open Slits  
White Wood | 350mm

**NEON SERIES**



**ST-015CH-NPK**

Neon Wood Series  
Chrome Spoke | 3" Deep Dish  
Neon Pink | 350mm

**ST-015CH-NYW**

Neon Wood Series  
Chrome Spoke | 3" Deep Dish  
Neon Yellow | 350mm

Available in ST-015CH-NPP (Neon Purple)  
ST-015CH-NOR (Neon Orange)



**DEEP DISH SERIES**



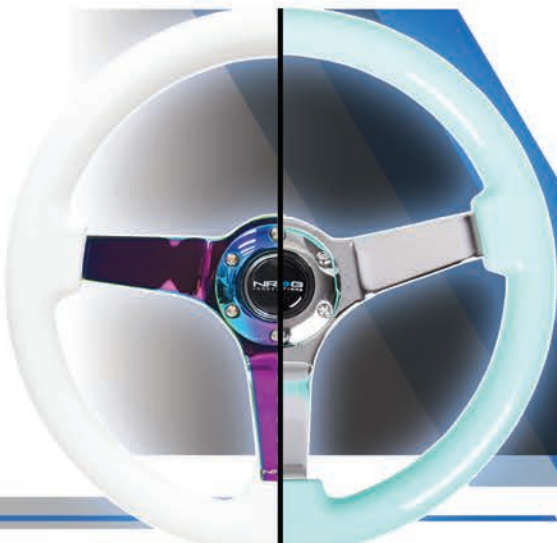
**RST-055R-RGGS**

Reinforced Sport  
Premium Leather | Green Stitch | 320mm



Available in Neochrome ST-055R-MCGS  
Chrome Gold ST-055R-CGGS

**DEEP DISH SERIES**



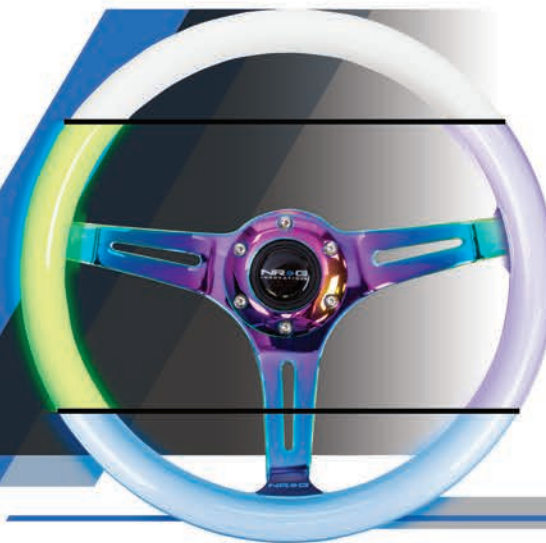
**ST-036MC-WT**

Deep Dish Series  
Neochrome 3 Spoke | 5mm Spoke  
White Wood Finish | 350mm | 3" Deep

**ST-036CH-MF**

Deep Dish Series  
Chrome 3 Spoke | 5mm Spoke  
Minty Wood Finish | 350mm | 3" Deep

**LUMINOR SERIES**



**ST-015MC-GL**

Luminor Series  
Neochrome 3 Spoke w/ Open Slits  
Glow-In-The-Dark Green | 350mm



Available: Center Spoke Finishes (3)  
Neochrome | Black | Chrome

Available in ST-015MC-GL/BL (Glow Blue)  
ST-015MC-GL/PP (Glow Purple)

**WOOD SERIES**



**RST-360SL**

Reinforced Classic Wood Grain  
Chrome 3 Spoke | 360mm





**WIRELESS CONTROLLER UNIT**

**SINGLE WHEEL EXTENDED KIT**



**WCU-008**  
Wireless Controller Unit  
Multi-functional & Multi-Color buttons

**WSS-100BK**  
Steering Wheel  
Single Wheel Extended Kit  
Black w/ Red Button



**DDI BAKCHIS**  
FORMULA DRIFT DRIVER  
NRG SPONSORED DRIVER

**RST-036MB-R**  
Reinforced Steering Wheel  
Leather

**RST-036MB-S**  
Reinforced Steering Wheel  
Suede

**HORN DELETE**

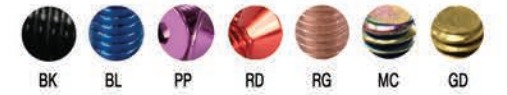
**STEERING WHEEL SCREWS**



**STR-610BK**  
Horn Delete | Blue Arrow  
6 Bolt Pattern  
1/5 in. Aluminum w/ Flat Beveled Screws

**STR-620BK**  
Horn Delete | Blue Outline Arrow  
6 Bolt Pattern  
Beveled Edges

**SWS-100GN**  
Flat Beveled Screws  
Green





# LOOKOUT FOR THE NRG OFFROAD CATALOG

**NRG**  
**OFFROAD**



# RACING SEATS

## FRP BUCKET SEATS



**FRP-300-GEO-BK**  
FRP Bucket Seats  
Black Geometric Pads  
Black Suede Lining  
Large

## FRP BUCKET SEATS



**FRP-300-GEO-BL**  
FRP Bucket Seats  
Blue Geometric Pads  
Black Suede Lining  
Large

## RECLINABLE SPORT SEATS



**RSC-700L/R**  
Reclining Sport Seat  
Black PVC Leather  
White Trim & Stitch  
27lbs

## RECLINABLE SPORT SEATS



**RSC-800L/R**  
Reclining Sport Seat  
"The Arrow"  
Black Cloth & Red Stitch  
27lbs

## FRP BUCKET SEATS



**FRP-300RD**  
FRP Bucket Seats  
Red Cloth & Suede Lining  
Large

## RECLINABLE SPORT SEATS



**RSC-208R/L**  
Reclining Sport Racing Seat  
Black PVC Leather  
White Stitching w/ NRG Logo

## RECLINABLE BUCKET SEATS



**RSC-400**  
Reclining Bucket Seats  
Durable Black Cloth  
Suede Lining & Red Stitch  
Large | 300lbs

## RECLINABLE TYPE-R SEATS



**RSC-210L/R**  
Type -R Style Racing Seats  
Durable Red Cloth  
Red Stitch | 25lbs

**A. RSC-200L/R**  
Type-R Style Racing Seats  
Black Cloth | Red Stitch

**B. RSC-220L/R**  
Type-R Style Racing Seats  
Black Suede | Red Stitch



# RACING SEATS

## FRP BUCKET SEATS

## FRP BUCKET SEATS



Available in  
**RSC-300**  
Carbon Fiber Bucket Seats  
Black Pads & Suede Lining  
Large



## FRP BUCKET SEATS

## FRP BUCKET SEATS



Available in  
**RSC-311**  
Carbon Fiber Bucket Seats  
Black Pads & Suede Lining  
Medium



## RACING SEAT DIMENSION

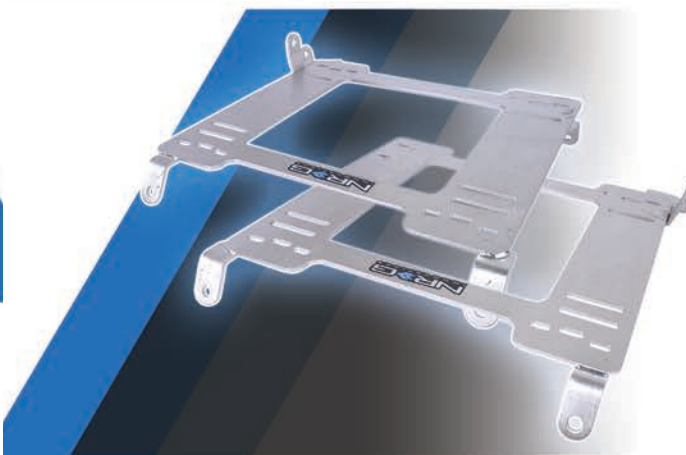
### SEAT DIMENSIONS

A	Shoulder Width
B	Bolster Width
C	Lower Bolster Width
D	Cushion Width
E	Cushion Length
F	Maximum Height

\*Disclaimer Note: The seat used for the seat dimension visual is just a generalization view of what measurements were taken for either RSC or FRP.

MODEL #	SIZE	A		B		C		D		E		F		WEIGHT	
		in	cm	in	cm	in	cm	in	cm	in	cm	in	cm	lbs	kg
RSC-100	One Size	22.5	57.2	14.5	36.9	14	35.6	19.5	49.5	22.5	57.2	37	94	25	11.4
RSC-200	One Size	20.5	52.1	13.5	34.3	15.5	39.4	19.5	49.5	20.5	52.1	34	86.4	25	11.4
RSC-202	One Size	22	55.9	12	30.5	14	35.6	19.5	49.5	22	55.9	37	94	27	12.3
RSC-204	One Size	22	55.9	12	30.5	14	35.6	19.5	49.5	22	55.9	37	94	27	12.3
RSC-206	One Size	19	48.5	14	35.5	15.5	38.5	20.4	51.7	21.8	54.5	37	94	25	11.4
RSC-208	One Size	20.5	52.1	13.5	34.3	15.5	39.4	19.5	49.5	20.5	52.1	34	86.4	25	11.4
RSC-210	One Size	20.5	52.1	13.5	34.3	15.5	39.4	19.5	49.5	20.5	52.1	34	86.4	25	11.4
RSC-300	Large	23	58.4	15	38.1	15.5	39.4	20	50.8	18	45.7	34	86.4	20	9
RSC-310	Large	22	55.9	13.5	34.3	15	38.1	20	50.8	18	45.7	34	86.4	20	9
RSC-320	Small	19	48.3	12	30.5	13	33	19	48.3	18	45.7	34	86.4	20	9
RSC-400	Large	22	55.9	12	30.5	16.5	41.9	20.5	52	19.5	49.5	33	83.8	30	13.6
RSC-700	One Size	21.5	54.5	12.5	31.5	14	35.6	21	53.5	21	53.3	37	94	25	11.4
RSC-800	One Size	21	53.5	12.5	31.5	16.5	41.9	22.3	56.6	23.2	59	35.5	90	22	10
FRP-300	Large	23	58.4	15	38.1	15.5	39.4	20	50.8	18	45.7	34	86.4	20	9
FRP-301	Large	23	58.4	15	38.1	15.5	39.4	20	50.8	18	45.7	34	86.4	20	9
FRP-310	Medium	22	55.9	13.5	34.3	15	39.1	20	50.8	18	45.7	34	86.4	20	9
FRP-311	Medium	22	55.9	13.5	34.3	15	38.1	20	50.8	18	45.7	34	86.4	20	9
FRP-330	Medium	19	48.3	12	30.5	13	33	19	48.3	18	45.7	34	86.4	20	9

### SEAT BRACKET APPLICATION LIST



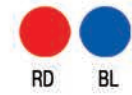
Year	Model	Bracket
94-01	Acura Integra	SBK-AC01
92-99	BMW E36 Coupe	SBK-BM01
92-03	Chevy Camaro   Pontiac Trans AM	SBK-CV01
82-92	Pontiac Firebird   Trans AM	SBK-DG01
94-05	Dodge Neon	SBK-FD01
79-98	Ford Mustang	SBK-FD02
99-04	Ford Mustang	SBK-FD03
05+	Ford Mustang	SBK-HD01
92-95	Honda Civic	SBK-HD02
2006-11	Honda Civic SI	SBK-HD03
98-02	Honda Accord (2 Door)	SBK-JP01
97-06	Jeep Wrangler TJ	SBK-SLS
2015+	Polaris Slingshot	SBK-MT01
00-05	Mitsubishi Eclipse	SBK-MZ01
89-97	Mazda MX-5 Miata NA	SBK-MZ02
98-05	Mazda MX-5 Miata NB	SBK-NZ01
88-98	Nissan 240SX	SBK-NZ02
03+	Nissan 350Z (6Sp) (Low)	SBK-SB01
7-Feb	Subaru WRX   STI   Impreza	SBK-TY01
90-99	Toyota MR2 (W20 Chassis)	SBK-VW01
93-98	Golf   GTI   Jetta MK3	SBK-VW02
99-05	Golf   GTI   Jetta MK4	



# SEATBELT HARNESS



**SBH-RS6PCBK**  
Racing Seat Belt Harness  
FIA 6 Point Cam Lock | Black



**SBH-RS5PCRD**  
Racing Seat Belt Harness  
SFI 5 Point Cam Lock | Black



# SEAT BELT PADS



**SBH-5PCBL**  
Seat Belt Harness  
SFI 5 Point Latch Link Harness | Black



**SBP-34RD**  
Seat Belt Pads | Long | Red  
Available in SBP-34BK (Black)  
SBP-34BL (Blue)

**SBP-27BK**  
Seat Belt Pads | Short | Black  
Available in SBP-27BL (Blue)  
SBP-27RD (Red)

# SEAT BELT HARNESS BAR



\*HBR-001 includes the standard harness belt loop for seatbelt harnesses from sliding. Also, the mounting tab ends are welded.

**HBR-001BL**  
Harness Bar | Blue  
47 in.

**HBR-001TI**  
Harness Bar | Titanium  
47 in.



**HBR-002BL**  
Harness Bar | Blue  
49 in.

**HBR-002TI**  
Harness Bar | Titanium  
49 in.

\*HBR-002 does not include the harness belt loop for seatbelt harnesses from sliding. Also, the mounting tab ends are on an hinge.

**HBR-003BL**  
Harness Bar | Blue  
51 in.

**HBR-003TI**  
Harness Bar | Titanium  
51 in.

\*HBR-003 includes the standard harness belt loop for seatbelt harnesses from sliding. Also, the mounting tab ends are on an hinge.

# WINGS



**CARB-A590NRG**  
Carbon Fiber Wing w/ NRG Logo  
59 in.

**CARB-A690NRG**  
Carbon Fiber Wing w/ NRG Logo  
69 in.



# SHIFT KNOBS



**SK-480BC**  
Extended Shifter Shift Knobs  
Black Chrome

BC MC SL



**SK-450SL**  
Short Shifter Shift Knobs  
Silver

BC MC



**S-400BC/MC**  
Fat Boy Style Shift Knobs  
Black Carbon & Neochrome

BC



**HK-700MC**  
Hand Brake Handle Cover | Neochrome



**HK-800SL**  
Hand Brake Handle Cover | Silver



**HK-900CF**  
Hand Brake Handle Cover | Carbon Fiber

\* Additional Hand Brake colors are displayed on the website: [WWW.GETNRG.COM](http://WWW.GETNRG.COM)

# HAND BRAKE HANDLE COVER



**SK-580BC-1**  
Adjustable Shift Knobs  
Black Carbon & Chrome  
(M10 x 1.25)



**SK-580MC-2**  
Adjustable Shift Knobs  
Carbon Fiber & NeoChrome  
(M10 x 1.50)



**SK-530CF-2**  
Adjustable Shift Knobs  
Carbon Fiber (M10 x 1.50)

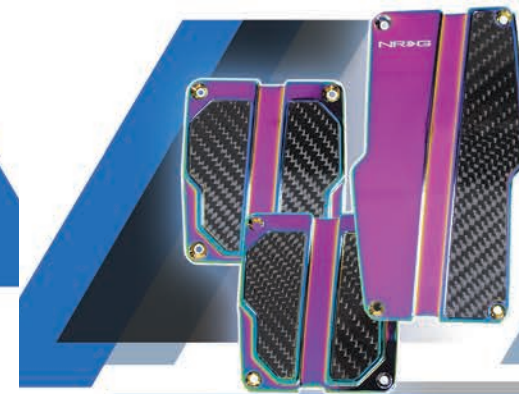


**SK-550CF-1**  
Adjustable Shift Knobs  
Carbon Fiber (M10 x 1.25)



**SK-500CG-1**  
Adjustable Shift Knobs  
Chrome Gold (M10 x 1.25)

SL BK MC  
Available: (M10 x 1.50)



(Manual) **PDL-100MC**  
Pedal Pad Cover Plates | Neochrome & Carbon Fiber



(Manual) **PDL-200BK**  
Pedal Pad Cover Plates | Black

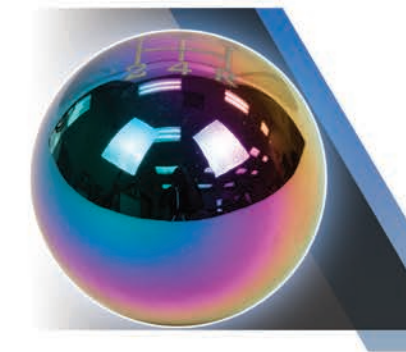


(Manual) **PDL-400GM**  
Pedal Pad Cover Plates | Gun Metal



**SK-150SL**  
Type-M Style Shift Knobs  
Silver

CF MC BK



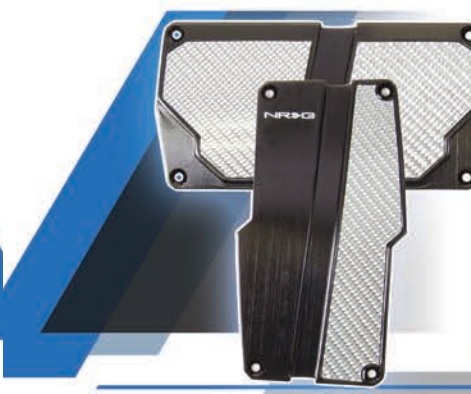
**SK-300MC-3**  
Ball Type Shift Knobs  
Neochrome | 5 Speed



**SK-100GM**  
Tyoe -R Style Shift Knobs  
Gun Metal | 42mm  
Universal



**SK-101T-NRG**  
Tyoe -R Style  
NRG Titanium  
Universal



(Automatic) **PDL-150BK**  
Pedal Pad Cover Plates | Black & Carbon Fiber



(Automatic) **PDL-250BL**  
Pedal Pad Cover Plates | Blue



(Automatic) **PDL-450SL**  
Pedal Pad Cover Plates | Silver





**2 SPOKE  
TROPIC  
VIBES**

When quality comes FIRST, it becomes a work of art!  
With our new line of products, NRG Innovations  
presents safety, strength and style.

## FLOOR MATS



**FMR-510NRG**  
Floor Mats  
Mitsubishi EVO X  
NRG Logo



**FMR-800**  
Floor Mats  
NRG Logo  
Universal



**FMR-220NRG**  
Floor Mats  
Acura Integra w/ "NRG" Logo  
1994 - 2001

Product #	Vehicle	Vehicle Year
FMR-100	Honda S2000 w/ "S2000" Logo	
FMR-110	Honda Civic w/ "CRX" Logo	1988-1991
FMR-110NRG	Honda Civic w/ "NRG" Logo	1988-1991
FMR-120	Honda Civic 2DR w/ "EG6" Logo	1992-1995
FMR-120NRG	Honda Civic 2DR w/ "NRG" Logo	1992-1995
FMR-130	Honda Civic 2DR w/ "EG6" Logo	1996-2000
FMR-130NRG	Honda Civic 2DR w/ "NRG" Logo	1996-2000
FMR-150	Honda Civic 3DR Si w/ "NRG" Logo	2002-2003
FMR-151	Honda Civic 2DR w/ "NRG" Logo	2006-2011
FMR-152	Honda Civic 4DR w/ "NRG" Logo	2006-2011
FMR-200	Acura NSX w/ "NSX-R" Logo	
FMR-210	Acura RSX w/ "DC5" Logo	
FMR-210NRG	Acura NSX w/ "NRG" Logo	
FMR-220	Acura Integra w/ "DC2" Logo	1994-2001
FMR-220NRG	Acura Integra w/ "NRG" Logo	1994-2001
FMR-240	Nissan S13/S14 w/ "240SX" Logo	1989-1998
FMR-300	Toyota Supra w/ "NRG" Logo	1996+
FMR-350	Nissan 350Z w/ "Z" Logo	
FMR-400	Subaru WRX w/ "STI" Logo	2004-2008
FMR-410	Subaru Impreza WRX w/ "NRG" Logo	2009-2011
FMR-500	EVO 8 w/ "Evolution" Logo	
FMR-500NRG	EVO 8 w/ "NRG" Logo	
FMR-510	EVO X w/ "Evolution" Logo	
FMR-510NRG	EVO X   Lancer GTS w/ "NRG" Logo	
FMR-600	G35 w/ "Infinity Emblem" Logo	2003-2006



# LUG NUTS

STAINLESS STEEL



## LN-LS500BL

Lug Nut 500 Series | Blue  
Stainless Steel Lug nuts w/ Bullet Shape Ends  
M12 x 1.5 | 21pcs

Diameter: 21mm  
Length: 50mm | Depth: 34mm

Available: LN-LS500BL M12 x 1.2.5



STAINLESS STEEL



## LN-LS700BK

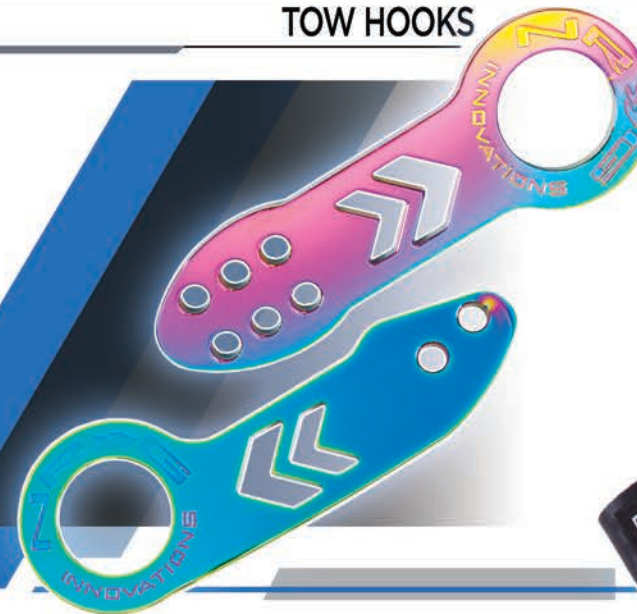
Lug Nut 700 Series | Black  
Stainless Steel Lug nuts w/ NRG Logo Dust Cap Cover  
M12 x 1.5 | 21pcs

Diameter: 19.65mm  
Dust Cap (w/out): 63.30mm | Dust Cap: 66.30mm  
Available: LN-LS700BK M12 x 1.2.5



# TOW ACCESSORIES

TOW HOOKS



## TOW-100MC

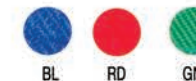
NRG Tow Hook | Front  
Neochrome



## TOW-101MC

NRG Tow Hook | Back  
Neochrome

TOW STRAP

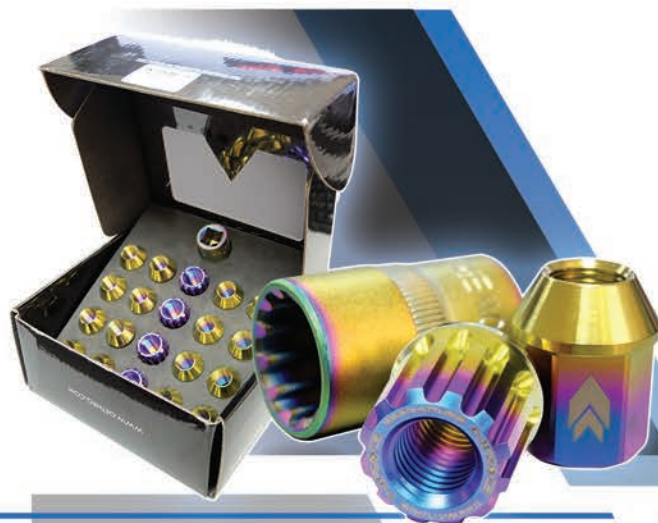


## TOW-xxxBK

NRG Tow Strap  
Black

Vehicle	Model   Year	Red Strap	Green Strap	Blue Strap	Black Strap
BMW	E36 (92-98), Z3	TOW-E36RD	TOW-E36GN	TOW-E36BL	TOW-E36BK
BMW	E90, E92, X3, mini R53 (01-06)	TOW-E92RD	TOW-E92GN	TOW-E92BL	TOW-E92BK
Honda	S2000 (00-08), Fit/Jazz (03-07)	TOW-130RD	TOW-130GN	TOW-130BL	TOW-130BK
Honda	Fit/Jazz (08+)	TOW-131RD	TOW-131GN	TOW-131BL	TOW-131BK
Hyundai	Genesis	TOW-160RD	TOW-160GN	TOW-160BL	TOW-160BK
Lexus	LS250 LS350 (06+)	TOW-125RD	TOW-125GN	TOW-125BL	TOW-125BK
Mazda	3 (04-07) [USA]	TOW-163RD	TOW-163GN	TOW-163BL	TOW-163BK
Nissan	370Z (08+), Infinity G37 (08+)	TOW-141RD	TOW-141GN	TOW-141BL	TOW-141BK
Nissan	350Z (02-03)	TOW-142RD	TOW-142GN	TOW-142BL	TOW-142BK
Nissan	350Z (04-07)	TOW-144RD	TOW-144GN	TOW-144BL	TOW-144BK
Scion	tC (05-08, 2014+), xB (03-07)	TOW-120RD	TOW-120GN	TOW-120BL	TOW-120BK
Scion	tC (2011-2013), xB (2007-2012)	TOW-121RD	TOW-121GN	TOW-121BL	TOW-121BK
Subaru	WRX STI (02-07)	TOW-207RD	TOW-207GN	TOW-207BL	TOW-207BK

TITANIUM



## LN-T210MC

Lug Nut 200 Series | Neochrome  
Titanium Lug nuts w/ Open End  
M12 x 1.25 | 21pcs

Diameter: 21.50mm  
Length: 26.65mm

Available: LN-T200MC M12 x 1.50



SPIKE SCREW CAPS



## FW-S700MC

Spike Screw Caps | Neochrome  
Compatible with LN-LS700 Series



# FENDER WASHERS



## FW-200TT

Titanium Fender Washer  
Titanium Titanium



## FW-300SS

Titanium Fender Washer  
Silver Silver



## FW-380TS

Titanium Fender Washer  
Titanium Silver



## FW-100PP

M6 Fender Washer  
Purple



## FW-150RD

M6 Fender Washer  
Red



## FW-800RG

M8 Fender Washer  
Rose Gold



# UNDER THE HOOD

## RADIATOR DIVERSION PANEL



**DVP-1053**  
Radiator Diversion Panel  
Subaru WRX / STI | 2008+

Product #	Vehicle	Vehicle Year
DVP-3001	Nissan 240SX	1989-1994
DVP-3004	Nissan 240SX	1995-1996
DVP-3005	Nissan 240SX	1997-1998
DVP-3007	Nissan 350Z	2003-2006
DVP-3051	Scion TC	2005-2007
DVP-3055	Toyota Supra	1993-1998
DVP-3060	Toyota MR-2	1991-1996
DVP-1002	Honda S2000	2000-2009
DVP-1006	Acura Integra	1994-2001
DVP-1051	Subaru WRX STI	2000-2007
DVP-1052	Subaru Legacy	2005-2006
DVP-1053	Subaru WRX STI	2008+
DVP-2001	Mazda Miata	1990-1998
DVP-2002	Mazda Miata	1999-2005
DVP-2051	Mitsubishi Evo 8 9	2003-2006

\* All brackets and hardware included

## ENGINE TORQUE DAMPER



**EDA-101CF**  
Engine Torque Damper  
Carbon Fiber



Product #	Vehicle	Vehicle Year
EDA-101T	Honda Civic	1992-1995
EDA-101S	Honda Civic	1992-1995
EDA-101R	Honda Civic	1992-1995
EDA-101P	Honda Civic	1992-1995
EDA-101B	Honda Civic	1992-1995
EDA-105R	B Series Motor	
EDA-110	Acura NSX	
EDA-201T	Honda Civic	1996-2000
EDA-401S	Honda Accord	1990-1993
EDA-403	Honda S2000 w/Heat shield	2000-2009
EDA-500CF	Universal (Large)	
EDA-501CF	Universal (Small)	
EDA-701S	Mitsubishi EVO 8/9	
EDA-701S	S13   S14   SR20DET	
EDA-801T	Scion TC	

\* All brackets and hardware included

## HOOD DAMPER



**HD-160CF**  
Hood Damper | Honda Fit  
Carbon Fiber | Low PSI



Product #	Vehicle	Vehicle Year
HD-100   HD-100CF	Honda Civic	1992-1995
HD-110   HD-110CF	Honda Civic	1996-2000
HD-120   HD-120CF	Acura Integra	1994-2001
HD-125   HD-125CF	Scion FRS   Subaru BRZ	2013+
HD-130   HD-130CF	Acura RSX [Low PSI]	2002+
HD-140   HD-140CF	Honda S2000 [Low PSI]	2000+
HD-150   HD-150CF	Mazda RX8   Protégé	
HD-160   HD-160CF	Honda Fit [Low PSI]	
HD-170   HD-170CF	Honda CRZ	
HD-200   HD-200CF	Subaru WRX STI	2000+
HD-300   HD-300CF	Nissan 350Z [Low PSI]	2003+
HD-400   HD-400CF	Mazda RX7	1993-1997
HD-500   HD-500CF	Mazda 6	2005+
HD-600   HD-600CF	Nissan 240SX S13	1989-1994
HD-700   HD-700CF	Scion XA   XB   TC [Low PSI]	2005-2006
HD-810   HD-810CF	Scion XB [Low PSI]	20008+
HD-880   HD-880CF	Nissan Cube [Low PSI]	
HD-900   HD-900CF	Ford Mustang	1999-2004

\* All brackets and hardware included

# UNDER THE HOOD

## RADIATOR CAP COVER



**RDC-100RG**  
Radiator Cap Cover  
Rose Gold



## MAGNETIC OIL DRAIN PLUGS



**NOP-100BL**  
Magnetic Oil Drain Plug  
Blue  
(M12 x 1.25)

**NOP-200PP**  
Magnetic Oil Drain Plug  
Purple  
(M14 x 1.50)

**NOP-300GM**  
Magnetic Oil Drain Plug  
Gun Metal  
(M20 x 1.50)

## OIL CATCH TANK



**OCC-100BK**  
Oil Catch Tank  
Black



## POWER STEERING TANK



**OCC-100BK**  
Oil Catch Tank  
Black



# ACCESSORIES

## FUEL PRESSURE REGULATOR



**FRG-1008C**  
Fuel Pressure Regulator  
Black Carbon

**FRG-200TI**  
Fuel Pressure Regulator  
Titanium

## GROUND WIRE SYSTEM



**GK-100RD**  
Ground Wire System  
Red

## TORQUE WRENCH



**LN-T100**  
Torque Wrench  
Silver

## LUGNUT SOCKET & KEY



**A LN-K100**  
Lock Key Socket  
3/8"  
L01 | L10 Series

**B LN-K200**  
17mm Socket  
L01 | L10 | LN-80 | LN-81

**C LN-S200**  
Extension Adapter  
1/2" to 3/8" Drive

**D LN-S200**  
Lugnut Key Socket  
Lugnut LN-L700 Lock Series

## SLOPE BOX RAMP



**SBX-100**  
Slope Box Ramp  
Silver

## FUEL PRESSURE REGULATOR ADAPTER



**FRG-H0NC**  
FPR Adapter  
Honda

**FRG-TNMC**  
FPR Adapter  
Toyota | Nissan | Mazda

**FRG-S8U**  
FPR Adapter  
Subaru

## FUEL PRESSURE REGULATOR GAUGE



**FRG-100CF**  
FPR Gauge  
Carbon Fiber | Yellow

**FRG-200RD**  
FPR Gauge  
Red

**FRG-110G**  
FPR Gauge  
White

## CARBON FIBER



**CARB-V100**  
Spark Plug Cover  
Carbon Fiber

**CHL-100 CHL-200**  
Hood Locks | Carbon Fiber  
Black (100) | Silver (200)

## CARBON FIBER



**CARB-P100**  
License Plate Frame  
Carbon Fiber | Wet

**CARB-P100M**  
License Plate Frame  
Carbon Fiber | Matte



# TERMS AND CONDITIONS

All orders placed with NRG Innovations (phone, fax, mail, verbal or email), either directly or through a dealer, constitute the acknowledgment and acceptance of all of the conditions listed below:

## Warranty and Disclaimer

Items sold by NRG Innovations may not be legal for street use in all states. WARNING, it is the buyer's responsibility to comply with applicable state laws. Buyer understands that due to strict U.S. federal and State safety crash guidelines, NRG Innovations is not responsible or liable for any damages or possible injuries incurred as a result of any accidents due to driver error, incorrect installation, bad judgment, act of nature, or act of god. All products are intended for off-highway uses only, and should be used for their intended purposes only. NRG Innovations does not take responsibility for installation, modification, misuse and/or unusual stress of the products. The buyer assumes all responsibilities for determining the suitability of the products. NRG Innovations is not responsible for any damages incurred either directly or indirectly on the vehicles or operators/ passengers within the vehicles.

## Disclaimer of Implied Warranties

NRG Innovations DISCLAIMS ALL IMPLIED WARRANTIES AND SIMILAR OBLIGATIONS (OTHER THAN GOOD TITLE) INCLUDING BUT NOT LIMITED TO THOSE OF FITNESS FOR A PARTICULAR PURPOSE, AND MERCHANTABILITY, WHETHER OTHERWISE ARISING BY LAW, CUSTOM, USAGE, TRADE PRACTICE, COURSE OF DEALING, OR COURSE OF PERFORMANCE. There are no warranties, which extend beyond those express warranties contained in the Agreement. Buyer affirms that it has not relied upon Seller's skill nor judgment to select or furnish the Goods for any particular purpose beyond the specific express warranties in the Agreement. Any design provided by Seller is based on information provided by Buyer. Any modifications of drawings, prototypes and other work of Seller after approval by Buyer will be at Buyer's expense at Seller's normal rates for services and materials. Seller does not warrant the Goods will comply with the requirements of any safety or environmental code or regulation of any federal, state, municipality or other jurisdiction beyond the specific express warranties in the Agreement.

## Installation

All products require professional installation. Buyer understands that some products may require modifications for correct fitment. Minor adjustments may be necessary as part of the normal installation process. All hoods require hood pins for safety reasons. All carbon fiber products will not sustain any force or weight, for they could be cracked by such force and weight. NRG Innovations has made an effort to produce all its aftermarket products to fit the original factory vehicles as closely as possible. However, some occasional prepping may be necessary for an ideal fit. The buyer needs to perform these steps to his/her satisfaction before installation. If the buyer wishes to paint the products, he or she must pre-fit the parts to the vehicle before painting to ensure proper fit. There are absolutely no returns on painted products.

## Customer Service

NRG Innovations does not sell to the public directly. All customer service related issues must be addressed to the dealer, who may in turn contact NRG Innovations. NRG Innovations will not answer sales or service related inquiries from the end-user. These inquiries include, but are not limited to, obtaining tracking numbers, obtaining authorization for returns/exchanges, filing claim for shipping damages (see below), and claiming for defects. Such users will be referred back to the dealer from whom he or she purchased the products.

## Shipping Damage

NRG Innovations packs all products carefully to prevent damage during shipping. However, damage may still occur occasionally. Buyer must inspect the packaging and the products carefully upon receiving them, then accept and shipment and notate any damages and irregularities, such as crushed, torn, punctured, or broken parts on both the packaging and the product, on the freight bill or receipt at the driver's presence. Buyer must retain all cartons, packaging materials, and damaged products for the carrier's damage inspector to inspect. Do not refuse shipment or return it without approval, because the buyer's right to make a damage claim may be denied. A signed receipt without any notation indemnified the carrier as well as NRG Innovations from any further damage claims. Discovery of damages after a clear deliver become the responsibility of the customer.

All damages must be notified to carrier and the dealer within 24 hours. In cases of damage with proper notation on receipt, the carrier will determine whether to pay for repair cost or re

placement value of the damaged goods after damage inspection. Replacement value is the amount the buyer paid to the distributor and is not negotiable. All disputes about the settlement amount should be addressed with the carrier. NRG Innovations, under no circumstances, shall be liable for the damaged product or for subsequent settlement of the claim with carrier.

## Defective Products

All products require professional installation. Minor adjustments might be necessary. These are normal body work and installation steps. Therefore, it is NOT considered to be defective. In addition, most carbon fiber products are hand-crafted, and no two items will be identical. Small imperfections such as wavy weaves, small bubbles, and clear coat blemished are inevitable. Pictures are required to demonstrate true defects on products on products prior to return. See below for information on our return policy.

## Shipping Errors

If the consignee receives an incorrect item due to NRG Innovations error, consignee must inform the dealer with three (3) days of receipt of shipment. NRG Innovations will then issue a "Call Tag" to pick up the incorrect item(s) and ship the correct item(s) at no additional charges.

## Shipping and Backorders

NRG Innovations tries to maintain a good stocking level in order to prevent backorders. However, in case a backorder is necessary, NRG Innovations will ship the order as soon as the parts become available. Backorders must be canceled with five (5) days from when the order is placed, or before when the parts become available, whichever is sooner. Otherwise, the parts will automatically be shipped to the buyer. NRG Innovations tries to ship regular, in-stock items the following business day. Please allow 5-10 business days for in-stock items to arrive. All shipping dates are approximate. Buyer is fully responsible for all shipping residential addresses (as opposed to business addresses) will incur additional costs.

## Contingencies

NRG Innovations shall not be liable for any failures to produce product to buyer when the cause of such failure is the result of the forces of nature, labor disputes, supplies or material shortage, acts of local, state, national, civil, or other authorities or public agencies; utility or communication failures, accidents, strikes, transportation problems, or any act or cause that does not normally occur in the ordinary course of NRG Innovatio

**\*\*\* ALL PRODUCTS ARE MANUFACTURED FOR OFF ROAD USE ONLY \*\*\***

# DISCLAIMER

~ NRG Innovations will be strictly enforcing MAP pricing policies on all dealers, distributors and vendors of NRG products. One basic guideline regarding this policy includes **ABSOLUTELY NO LOWER THAN RETAIL PRICING** may be advertised in any form including *EBAY*, *Yahoo Auctions*, and *Craigslist*. NRG Innovations must authorize all vendors attempting to sell on these mentioned venues. Our MAP pricing team, along with the utilization of many of our dealer networks, will enforce this policy. While we enforce a **ZERO Tolerance** policy with the MAP policy, NRG Innovations or its vendor, if deemed necessary may give warning(s).

~ You hereby agree to indemnify and hold harmless NRG Innovations, and its subsidiaries, and their respective directors, officers, employees, agents, partners, members, and other owners, against any and all claims, actions, demands, liabilities, losses, damages, judgments, settlements, costs, and expenses (including reasonable attorneys' fees) (any or all of the foregoing hereinafter referred to as "Losses") from any damages (whether physical or psychological), injuries, permanent disabilities or deaths caused directly or indirectly by any of Our products or services.

~ NRG Innovations is registered and trademarked brand. Use of the logo, name, design, art, copyrighted test, mark, and media in any form must be granted authorization by NRG Innovations and its trademark owners. NRG Innovations reserves the right to grant, remove, and change authorization on a case-by-case basis and authorization is subject to change at any time.

~ By accepting our shipping quotations and the shipping dates, you have agreed to abide by our Sales' term and conditions set forth in this purchase order. Any orders once confirmed after shipping charges and Shipping dates has been accepted/sent, cannot be cancelled unless an agreement has been reached. It is the end-users responsibility to make sure that they are ordering the correct part for the correct application.

~ Returns are subject to approval. With all returns, an approval is required. NRG Innovations must be notified with 48 hours of return shipping and a RMA (Returned Merchandise Authorization) must be requested for return shipment. Returned items are subject to a restocking fee of 15%-30% (depending on the merchandise, or unless otherwise agreed upon).

~ A professional mechanic in an equipped workshop should install all automobile parts. Any damaged or missing parts during installation will not be refunded, nor any request for such be entertained. All advices and technical information provided by us will be used under your own discretions. We will not bear any responsibilities for any misunderstanding and misinterpretation. Also, buyer understands that due to U.S. Federal and State Safety crash guidelines, NRG Innovations is not responsible or liable for any damages or possible injury incurred upon possible accidents due to driver error, incorrect installations, bad judgments or act of nature, etc. All carbon fiber (interior/exterior components) are only recommended and legal to be used for off highway use such as track racing or for exhibition show only! Buyer understands that all products may need modifications for correct fitment.

~ All advices and technical information provided by us will be used under your own discretions. We will not bear any responsibilities for any misunderstanding and misinterpretation.

~ NRG Innovations does not guarantee the legality of any products we sell. It is the customer's responsibility to check local and state laws regarding vehicle modification before ordering. Some parts we sell are for racing only, and are not legal for use on public road or street. All engine modification components, except those that are exempt, have been designed and are intended for off-highway application. Many state laws prohibit the removal, modification, or rendering inoperable of any device or element of design affecting vehicle emission or safety in a vehicle used on public highways. Violation of such laws may subject the owner or user to a fine or penalty. Installation of this part may void the warranty coverage, if any, on your vehicle. Vehicles modified by the use of performance parts may no longer be lawfully used on public highways.

~ We reserve the rights to modify any of the terms and conditions contained in this Agreement, at any time and in our sole discretion. Modifications may include, for example, changes in the scope of membership or dealer programs payment procedures and rules.



# NRG COLLECTION



**NT-210**  
T-Shirt | Galaxy Skull & Bones  
Black



**HT-007**  
Snapback Hat | White NRG Cursive  
Black



**HT-007MAR**  
Snapback Hat  
Maroon

**HT-007CAMO**  
Snapback Hat  
Camouflage

**LIMITED EDITION**



**HT-000IGRY**  
Relax Hat | Quick Release  
Gray



**LAN-006**  
Lanyard | Are You Quick Enough  
Blue



**LPF-100**  
License Plate Frame  
Black | White & Blue Logo

**LPF-101**  
License Plate Frame  
Black | Gold Logo



**AF-110**  
Air Freshener | Man



**AF-103**  
Air Freshener | Quick Release



**KC-300MC**  
Keychain | Quick Release  
Neochrome



**MP-001-NRG**  
Mini License Plate | NRG Plate  
6" x 3" \*Suction cups included

**SFI** approved & certified  
**QUICK RELEASE**



Photo Credit:  
Larry Chen

**JEFF JONES**  
FORMULA DRIFT DRIVER  
NRG SPONSORED DRIVER



**sfi**  
**JEFF JONES**  
Vehicle Inspired Color  
Quick Release

