

# INSTRUCTIONS

## Lower Control Arm Rear Bushing

Z5388

**Application:**  
Mini R50, R53.

**Contents:**  
1. 2x large outer bushings  
2. 2x small inner bushings

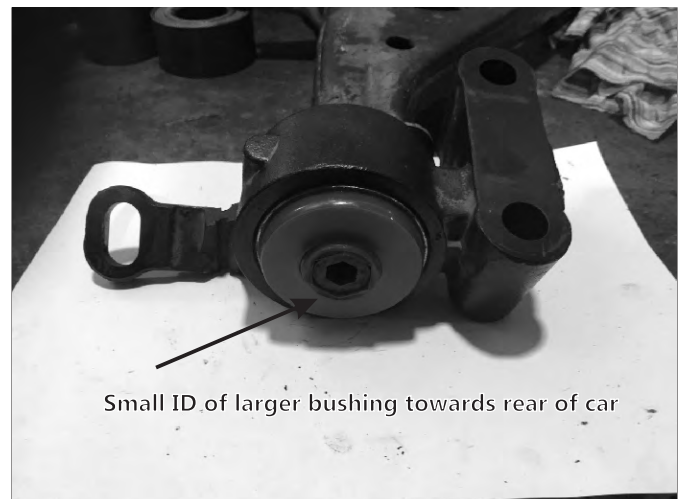
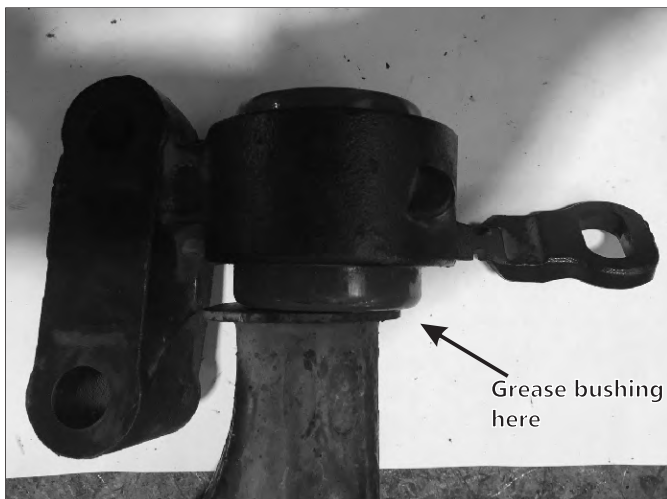


### Fitting Guide

1. Raise vehicle and safely support.
2. Remove front wheels and lower control arms.
3. Press out the rear bushing from the steel housing - careful not to damage.
4. Press or cut bushing away from control arm hex spindle.
5. Press supplied larger bushing in housing - note the smaller ID to be towards the rear of vehicle.

**NOTE:** For offset kits - place ID towards outside of vehicle (this will push ball-joint forward, promoting an increase in caster).

6. Generously grease larger bushing ID and front face (wipe off any excess).
7. Fit smaller bushing into larger, then slide control arm spindle into bushing - a small amount of grease can be used here to aid fitment.
8. Bolt up to vehicle and carry out wheel alignment.



**Warning:** Please drive carefully while you accustom yourself to the changed vehicle behaviour.