





Established in 2007, Nitro Gear and Axle is one-stop shopping for all of your drivetrain needs. Owned and operated by real automotive enthusiasts from all segments of the automotive market, Nitro understands the unique needs of everyone from street rodders to drag racers to off-roaders and every segment in between. We understand the unique needs of each market segment and have developed a full line of products that cover every automotive genre.

What sets Nitro Gear and Axle apart is the quality of the products we offer - we stand behind everything we sell -- we strive to provide the highest quality differential components available. We take the steps necessary to ensure our parts are dependable. Our product range is continually growing to meet the needs of consumers for new ratios and applications. We maintain two warehouses in the United States, so no matter where your shop happens to be, Nitro can guarantee fast and reliable service directly to your door.

At Nitro we know differentials, and know what it takes to provide you with high quality components.

RING & PINION INFORMATION	3
TRACTION DIFFERENTIAL	4
AXLE INFORMATION	5
TOYOTA SPECIALTY AXLES	6
DROP-OUT HOUSINGS	7
BIG PINION KITS	8
DRIVE SLUGS / FLANGE KITS	9
KIT DESCRIPTIONS	10
GEAR PACKAGES	11
INNER & OUTER FRONT AXLES	12
4340 CHROMOLY FRONT AXLES	13-14
TOYOTA FRONT AXLES	15
JEEP REAR AXLES	16
FORD TRUCK REAR AXLES	17
FORD CAR REAR AXLES	19
GM TRUCK REAR AXLES	20
GM CAR REAR AXLES	21-22
OTHER REAR AXLE	22
AMC MODEL 20	23
CHRYSLER 7.25, 8.0, 8.25, 9.25, AAM	24
CHRYSLER 8.75, 8.0	25
DANA 30	26
DANA 35	27
DANA 44	28
DANA 44HD / DANA 44 REVERSE	29
DANA 44 JK	30
DANA 50 REVERSE / DANA 60	31
DANA 70, 80	32
	33

FORD 7.5, 8.0, 8.8	34
FORD 9"	35
FORD 9", 10" HIGH PERFORMANCE	36
FORD 9.75, 10.25, 10.5	37
CLASSIC GM & CORVETTE	38
GM 7.25, 7.5, 7.625, 7.75	39
GM 8.0, 8.2, 8.25	40
GM 8.5, 8.6	41
GM 12P, 12T, 9.25	42
GM 9.5, 14T, 11.5	43
NEW CAMARO	44
SUZUKI/NISSAN	45
TOYOTA 7.5" 7.5" R	46
TOYOTA 8" 4 CYL-6 CYL	47
TOYOTA 8", 8" REVERSE	48
TOYOTA 8.2", 8.4", 9" IFS, 9.5", 10.5"	49
NITRO LIMITED SLIPS	50
SPOOLS	51
MINI SPOOLS	52
YOKES	53-55
DIFFERENTIAL COVERS	56
SOLID SPACERS / SHIM KITS	57-58
WHEEL SPACERS	59
TOOLS	60
DIFFERENTIAL ID	61
GM RPO CODES	62
CHARTS & FORMULAS	63
MERCHANDISE	64



GEAR PACKAGES

Is your 4x4 vehicle suffering from poor performance and reduced fuel economy resulting from oversized tires? A Nitro gear change will help get that performance and economy back! Nitro Gear Packages include everything necessary to re-gear the front and rear of many popular 4x4 Trucks, Jeeps and SUV's.

It is a common misconception that lower gears are only for hardcore off-roading, but in actuality the average daily driven vehicle can see huge improvements in both performance and fuel economy by properly matching a vehicle's gear ratio to the installed tire size, all while reducing strain on the vehicles drivetrain.

We at Nitro Gear & Axle realize how confusing and difficult it can be for the average consumer or gear installation shop to compile the list of gear parts and prices required when doing a complete front and rear gear change. To make it easier for everyone, the experts at Nitro Gear & Axle have introduced our "Gear Packages" -- an industry first.

These gear packages are specifically designed for many popular 4x4 applications such as the Dodge Ram, Chevy / GMC 2500/3500HD, Toyota Land Cruiser / FJ Cruiser / 4-Runner / Tacoma / Tundra, Jeep Cherokee / Wrangler / Rubicon and Ford F250 / F350 Super Duty. Check out our gear package pages for more information. If you don't see a gear package for your application, give us a call and our gear specialists can create one for you!

RING / PINIONS

Nitro Ring & Pinions are among the best in the industry. By using better materials, machining, heat treating and lapping processes, Nitro can ensure a strong, quiet-running, long-lasting setup. Every new application is put through multi-point inspections and actually installed and set up by Nitro's in-house differential experts to ensure excellent fitment and easy setup. At Nitro we strive to meet consumer demand for new ratios and applications, and we are continually developing new products to stay ahead of the competition.

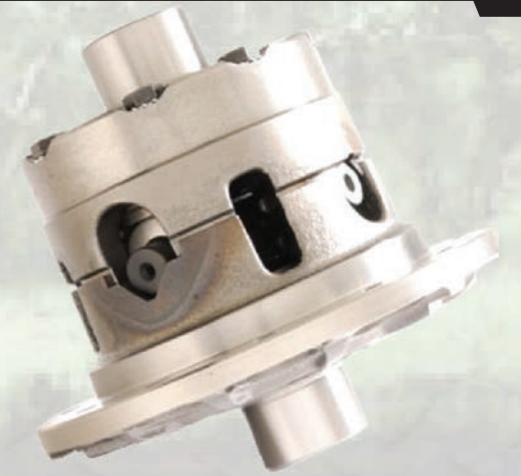
- Precision machining & heat treating processes ensure strength and excellent fitment
- Computer controlled fine gear lapping ensures ease of installation, excellent contact patterns and a quiet-running setup
- Rapidly growing application range to meet new demands
- Limited 2-Year Warranty
- Street or strip, track or trail - you can depend on Nitro Gear Packages



NITRO POWER LOCK

The Nitro Power-Lock is the pinnacle of performance traction in a limited slip differential. The unique design of the floating V-ramp cross shafts apply additional traction to the wheels as throttle is applied. Whether it's street, strip, track or trail, you can depend on the Nitro Power Lock.

- Precision manufactured from the highest quality materials, using state-of-the-art machining & heat treating processes
- Updated one-piece side gear design increases strength with nearly double the spline contact of two piece side gears
- Assembled in the USA
- 1 year warranty
- Fully rebuildable



NITRO TRAC-LOCK

The Nitro Trac-Lock provides the ultimate in traction for Ford 8" & 9" differentials. The Trac-Lock is not like the old factory units that had a tendency to crack the case. Nitro's Trac-Lock uses a billet and forged case for strength you can depend on. Two torque-bias options ensure this unit will suit the needs of hot rods, muscle cars, vintage show cars, or even 4x4s.

- Precision manufactured from the highest quality materials, using state-of-the-art machining & heat treating processes
- 4 Pinion design, with a forged steel case and billet hat to ensure strength
- Available in 28 or 31 spline
- Mild street version or aggressive race version available
- Assembled in the USA
- 1 year warranty
- Fully rebuildable



Axles are the critical link between the differential and the tires, and they can take a beating in extreme conditions on the street, on the track, or on the trail. Nitro Axles include a full line of factory replacement shafts that are stronger than OE replacement shafts as well as a variety of Performance axleshafts that are constructed of higher-quality materials and utilize superior heat treating. These Performance axles are the best choice when big engines, big tires, and traction-enhancing differentials are part of the mix. Nitro also offers a full line of 4340 Chromoly front axleshafts for 4x4 applications that set the standard for durability in the off-road industry.

Rear Axles

- Performance axles are constructed of 1541H Forged alloy or 4130 Chromoly with extra deep heat treating for 20-30% added strength over stock axles.
- Conventional Nitro replacement shafts offer strength improvements over factory shafts.
- Big spline upgrades are available for select applications.
- Precision spec'd and machined for excellent fitment
- Wide application range to suit old and new vehicles with applications from mild to wild.
- Certain applications available with extra long splines that can be cut to length in order to suit multiple applications.

Front Axles

- 4340 forged chromoly axles are precision-machined and heat treated to withstand the abuse of today's off-road vehicles.
- Big spline upgrades are available for select applications.
- Forged Chromoly material that is precision-machined and heat treated to withstand the abuse of today's off-road vehicles.
- Thicker material in several critical areas, right where it counts.

Nitro Gear & Axle takes great pride in offering a complete line of drivetrain components for a wide variety of applications, and in our hearts we have always been Toyota specialists! As a result, Nitro offers the single most complete line of Toyota ring & pinion gears, axles, installation kits, and much more. Many Nitro brand products are industry-firsts and exclusives not available from anyone else:

- Nitro pioneered 4.88 ratio gears for the 2007 & newer Tundra 10.5" differential and it is still one of our most popular exclusives.
- Our line of 8" gears have 29 spline "big pinions" which offer our 2003 & newer customers a factory correct pinion, and it also offers all of our 2002 & older owners a proven strength upgrade. 8" gears are offered in a wide range of options including 4.11, 4.30, 4.56, 4.88, 5.29 and even 5.71!
- We have spent years researching exactly what you need to make your Toyota install go smoothly and we have eliminated all the guess work with our Nitro Master Install Kits. Let us know what your vehicle is and whether or not it's has an electronic locker or an ARB, and we'll take care of the rest.
- Other Nitro exclusives include 9.5" Land Cruiser 3.70 gears (previously OEM only), FJ Cruiser 4.88 gears and even Toyota model-specific Gear Packages.
- Many of our Toyota kits include solid pinion spacers, which eliminate crush-sleeves and let you retain pinion preload if you ever need to change a pinion seal. Our solid spacers are also available individually and we recommend them for anyone doing a gear or carrier change.
- Nitro offers replacement front and rear axles & birfields, 4340 Chromoly axle upgrades and even cut-to-length axles for full-float applications.

Whether it's a full-floating axle kit for a Land Cruiser or Gear Package for a Tacoma, Tundra, FJ Cruiser, or Land Cruiser, Nitro Gear & Axle offers more Toyota options than any other company, period.



Cut-to-Length Axles

Custom axleshousings need custom axleshafts that match, and Nitro has you covered with a variety of Cut-To-Length shafts for most popular applications. Featuring extra-long splines, these Chromoly HD axleshafts

can be cut to fit custom axle widths. Call to discuss proper measuring techniques to determine axle lengths, or visit our website.

Performance Axles - Cut to length

Application	Model	Length	Spline	Bolt Circle	Side	Part Number
DANA						
Chromoly Cut-To-Length	44	24.5-32	30	5x4.5/5x5/5x5.5	LH/RH	AXD44-30-CTL
Chromoly Cut-To-Length	44	22-31.75	35	5x4.5/5x5/5x5.5	LH/RH	AXD44-35-CTL
Chromoly Cut-To-Length	60	32.5-36.5	30	8x3.96	LH/RH	AXFF30-36.5
Chromoly Cut-To-Length	60	37-39.5	30	8x3.96	LH/RH	AXFF30-39.5
Chromoly Cut-To-Length	60/70/80	31-33.5	35	8x3.96	LH/RH	AXFF35-33.5
Chromoly Cut-To-Length	60/70/80	32.5-36.5	35	8x3.96	LH/RH	AXFF35-36.5
Chromoly Cut-To-Length	60/70/80	36-39.5	35	8x3.96	LH/RH	AXFF35-39.5
FORD						
Universal Cut-To-Length	8",9"	23.5-32.87	28	5x4.5/5x4.75/5x5	LH/RH	AXF8-28-32.87
Universal Cut-To-Length	8",9"	20.5-24.125	28	5x4.5/5x4.75/5x6	LH/RH	AXF8-28-24.125
Universal Cut-To-Length	9"	25.5-32.87	31	5X4.5/4.75/5.5	LH/RH	AXF9-31-32.87
Universal Cut-To-Length	8",9"	23.5-32.87	31	5x4.5/4.75/5	LH/RH	AXF9-31-32.87
Chromoly Cut-To-Length	9"	22-31.8	35	5x4.5/5/5.5	LH/RH	AXF9-35-CTL
Chromoly Cut-To-Length	9"	24-34	35	6x5.5	LH/RH	AXF9-35-6CTL
TOYOTA						
FJ40/45 Chromoly Cut-To-Length (Pair)	9.5	36/24	30	stock	LH/RH	AXTFF-FJ40
FJ60/62, HJ60 Chromoly Cut-To-Length (Pair)	9.5	38.25/24	30	stock	LH/RH	AXTFF-FJ60
FZJ80, HDJ80 Chromoly Cut-To-Length (Pair)	9.5	36.375/28.9	30	stock	LH/RH	AXTFF-FJ80
LC40/60/80 Series Cut-To-Length	9.5	30.5-38.25	30	stock	LH	AXTFF30-L
LC40/60/80 Series Cut-To-Length	9.5	21.5-28.9	30	stock	RH	AXTFF30-R
79-85 P/U & Hilux, Cut-To-Length	8	26.62-29.26	30	stock	LH/RH	AXT35140
95.5-04 Tacoma & 96-02 4-Runner Cut-To-Length	8	24.5-29.25	30	stock	LH/RH	AXT35550
CHRYSLER						
Cut-To-Length	8.75	24.5-34	30	5x4.5/5x5/5x5.5	LH/RH	AXC8.75-34.0
Cut-To-Length	8.75	24-28	30	5x4.5	LH/RH	AXC8.75-CTL
Cut-To-Length	8.75	32	30	5x4.5	LH/RH	AXC8.75-32.0
Chromoly Cut-To-Length	8.75	27-30-9/16	35	5x4.5	LH/RH	AXC8.75-35SPL
Chromoly Cut-To-Length	8.75	24-34	35	6x5.5	LH/RH	AXF9-35-6CTL
GM						
Cut-To-Length	10.5,11.5	31-35	30	8x3.5	LH/RH	AXGM14T-35.0
Cut-To-Length	10.5,11.5	34.8-38.8	30	8x3.5	LH/RH	AXGM14T-39
Cut-To-Length	10.5,11.5	38.2-42.2	30	8x3.5	LH/RH	AXGM14T-42.0

- 5 year warranty
- High strength Chromoly shafts with rolled splines.
- Nitro axles are heat treated after splines are cut. Most custom axles have the splines cut after heat treating, removing heat treated metal from the spline section of the shaft.
- Trim to desired length.
- Eliminates the cost and need for custom Axles!



Drop-Out Housings & Pinion Supports

Nitro has always been a performance axle specialist! Nitro's line of complete Ford and Chrysler billet aluminum and nodular iron drop-out centersections and pinion supports can survive where factory parts usually fail. Built and machined to Nitro's precise specifications, these high-performance housings are intended for specialty hardcore racing and off-road applications where strength

is kept to a maximum while weight is kept to a minimum. These specialty housings are available for Ford 9" and 10" applications as well as Chrysler 8.75 axles. They also accommodate popular upgraded carrier bearing and big-spline axles that are common with specialized racing applications.

Housings - Drop Outs/Pinion Supports

Application	Model	Carrier Bearing	Axle Splines	Part Number
FORD				
HD CNC Billet Aluminum Housing	9"/10"		35+	NPDOF9-BILLET
Nodular Iron Housing	9"	3.250"	35+	NPDOF9-2-325
Aluminum Housing	9"	3.250"	35+	NPDOF9-3-325
Nodular Iron Housing	9"	3.062"	30	NPDOF9-1-306
Aluminum Housing	9"	3.062"	30	NPDOF9-3-306
6061 Aluminum Pinion Support	9"			NPF9PS-1
6061 Aluminum Oversize Pinion Support	9"			NPF9PS-2
Nodular Iron Pinion Support	9"			NPF9PS-3
HD Billet Aluminum Pinion Support	9"/10"			NPF9PS-4
CHRYSLER				
Nodular Iron '742'	8.75"			NPDOC8.42



NPDOF9-BILLET

- CNC machined
- Housing: solid 6061 T6 billet aluminum
- Main Caps: solid 7075 T6 billet aluminum.
- Far stronger than other OE, Aftermarket Aluminum or Iron Dropout housings.
- Accepts Ford 9", 9.5", 10" Ring & Pinion sets up to 35 spline pinion.
- King Of Hammers Ultra 4 Proven design.
- Accepts up to 40 spline axles.
- Made in the USA.
- Number stamped caps.

NPDOC8.42

- Nodular Iron housing and forged caps
- Extra material where it's needed most to prevent deflection
- Billet Aluminum side adjusters and locks
- Factory cast markings for authentic look

Big Pinion Kits

Dana 44 and Ford 9" axles have enjoyed a very long production run, and Nitro's Big Pinion Kits combine the best strength attributes of these axles over the years and enables users to retrofit these strength benefits to older axles! Even newer axles can benefit from big pinion upgrades, including the AAM 11.5" axle! These kits feature an upgraded ring & pinion as well as heavy-duty

bearings and your choice of axle yoke on select applications. Premium Nitro ring & pinions are included along with other necessary components needed to upgrade the axle with a larger gearset. Please note that machining and grinding is required on some housings, be sure to examine the notes attached to the listings.

Dana 44 Big Pinion Kits

Application	Model	Chose Yoke	Carrier	Pinion Splines	Ring Gear Bolts	Part Number
FORD						
Thick Gear Set, Incl. pinion bearings/shims, bolts & yoke	44	1310/1350	3.73 & Down	24	7/16" & 3/8"	D44-321BP-T-NG
Thick Gear Set, Incl. pinion bearings/shims, bolts & yoke	44	1310/1350	3.73 & Down	24	7/16" & 3/8"	D44-373BP-T-NG
Thick Gear Set, Incl. pinion bearings/shims, bolts & yoke	44	1310/1350	3.73 & Down	24	7/16" & 3/8"	D44-411BP-T-NG
Thick Gear Set, Incl. pinion bearings/shims, bolts & yoke	44	1310/1350	3.73 & Down	24	7/16" & 3/8"	D44-456BP-T-NG
Thick Gear Set, Incl. pinion bearings/shims, bolts & yoke	44	1310/1350	3.73 & Down	24	7/16" & 3/8"	D44-488BP-T-NG
Thick Gear Set, Incl. pinion bearings/shims, bolts & yoke	44	1310/1350	3.73 & Down	24	7/16" & 3/8"	D44-513BP-T-NG
Thick Gear Set, Incl. pinion bearings/shims, bolts & yoke	44	1310/1350	3.73 & Down	24	7/16" & 3/8"	D44-538BP-T-NG

- Fits most "Traditional" type standard "low pinion" Dana 44
- Includes ring, pinion, pinion bearings, seal, nut, solid spacer, shims, bearing spacer and ring gear bolts.
- Your choice of 1310 or 1350 series pinion yoke.
- Larger 8.875" diameter ring gear vs Standard 8.5" ring gear
- Larger diameter & stronger pinion shaft. (Dana 60 sized!)
- 24 large spline pinion.
- Double -drilled ring gear with 3/8" & 7/16" bolt holes.
- 2 Year Warranty*



TYPICAL DANA 44 PINION

NITRO DANA 44 BIG PINION



TYPICAL DANA 44 PINION

NITRO DANA 44 BIG PINION

Drive Slugs and Flange Kits

Extreme four-wheeling demands extreme strength, and Nitro answers the demands of extreme four wheeling with premium drive slugs and flange kits. Designed for popular applications, these drive slugs keep going where conventional locking hubs fail. The internal drive slug is constructed of 4340 Chromoly steel and is retained by a billet aluminum cap engraved with the Nitro logo. The

drive slugs are available as a stand-alone upgrade or can be ordered with upgraded Chromoly stub axles that include upgraded splines and additional strength over stock applications. Popular Ford, GM, and Jeep applications are currently available, with more applications being added all the time. Please visit our website for the latest applications for your vehicle.

Drive Slug / Flange Kits

Application	Model	Length	Spline	U-Joint	Part Number
Dana 44 Kit without stub axles	44		30		NPD44-SLUG-30
Dana 60/70 Kit without stub axles	60/70		35		NPD60-SLUG
JEEP					
Wagoneer with drum brakes (includes stubs)	44	9.72"	30	5-297X	AXN38816-KIT
Wagoneer with disc brakes (includes stubs)	44	9.94"	30	5-297X	AXN38815-KIT
GM					
Blazer, Jimmy, C/K 10/15/20/25 (includes stubs)	44/8.5"	9.94"	30	5-297X	AXN38815-KIT
GM, Dana 60 & 70 (includes stubs)	60/70	12"	35	5-332X	AXN46100-KIT
FORD					
Bronco (includes stubs)	44	9.72"	30	5-297X	AXN38816-KIT
1977-1997 Ford, Dana 60 (includes stubs)	60	11-3/8"	35	5-332X	AXN46101-KIT
1999-2004 Ford, Dana 50 & 60 (includes stubs)	50/60	9.49"	35	5-806X	AXN46102-KIT



- Lifetime Warranty on drive slugs & stub axles
- Billet Aluminum caps
- 4340 Chromoly slugs & stub axles

Excalibur U-Joints

Nitro Excalibur Competition U-joints are the strongest U-joints available! If you wheel hard or are involved in competition, these joints are a must have. Constructed of an HD forged cross joint and hardened caps, these axle joints are greasable and include full circle retaining clips for positive engagement of the caps. Instead of conventional needle bearings, which can be crushed or break under extreme loads, these joints feature a proprietary bushing material that can survive under

extreme pressure. Because of their design, they are not recommended for highway speed and should only be used on applications that are equipped with locking hubs if the vehicle is driven on the street. Available for popular front axle shaft joints, the Excalibur joints replace conventional 297X and 760X Spicer joints, as well as larger 806X and 733X joints. If your method of four-wheeling is considered extreme, then Excalibur is the solution!

Excalibur U-Joints

Application	Model	Replaces	Quantity	Part Number
NITRO				
Excalibur 760X U-Joint	30/44/8.5	5-297X & 5-760X	1	NP760X-EXC
Excalibur 760X U-Joints (PAIR)	30/44/8.5	5-297X & 5-760X	2	NP760X-EXC-KIT
Excalibur 5-806X U-Joint	60	5-806X & 5-322X	1	NP806X-EXC
Excalibur 5-806X U-Joints (PAIR)	60	5-806X & 5-322X	2	NP806X-EXC-KIT
760X Replacement Cap, Zerk & Snap Ring	NP760X	Requires 4 per joint	1	COM760X-EXC
806X Replacement Cap, Zerk & Snap Ring	NP806X	Requires 4 per joint	1	COM806X-EXC

- Precision Machined from proprietary Billet Material.
- No needle bearings to crush.
- Full circle snaprings.
- State-of-the-art heat treating process, surface-hardened trunnion to prevent galling.
- MADE IN USA
- Serviceable.



Kit Descriptions

MASTER INSTALL KIT (MK)

Pinion & carrier bearings
Pinion seal
Crush sleeve or preload shims
Pinion depth shims
Carrier shims (varies by application)
Gear marking compound
Loctite
Pinion nut (varies by application)
Gasket or silicone

INNER PARTS KIT (IPK)

Side gears
Pinion gears
Cross pins
Thrust washer
Cross pin bolt (varies by application)

PINION BEARING KIT (PK)

Pinion bearings
Pinion nut (varies by application)
Pinion seal
Pinion depth shims or complete shim kit (varies by application)
Crush or preload shims
Gear marking compound

BEARING KIT (BK)

Pinion bearings
Carrier bearings
Crush sleeve
Pinion seal

MINIMUM INSTALL KIT (IK)

Pinion seal
Crush sleeve
Complete shim kit
Marking compound
Varies (pinion nut, o-ring, baffles, slinger)

SHIM KIT (SK)

Pinion depth shims
Carrier shims
Preload shims, if applicable

AXLE BEARING & SEAL KIT (AK)

Axle bearing (OEM quality)
Axle seal

GEAR PACKAGE (GP)

Front Ring & Pinion
Master Install kit
Front solid spacer (varies by application)
Rear Ring & Pinion
Master Install kit
Rear solid spacer (varies by application)
Rear yoke (varies by application)

CARRIER BEARING KIT (CK)

Carrier shims (if applicable)
Carrier Bearings

Gear Packages are complete gear and overhaul kits for our more popular applications. Gear Packages include a front ring & pinion, front master kit, rear ring & pinion, and rear master kit. Kits also include any yokes / flanges and solid spacers that may be required for specific applications. If you don't see a Gear Package listed for your application, don't worry because we can build one for you! One part number, One price, One call.

Gear Packages

Application	Notes	Ratio	Part Number
CHEVROLET			
2001 & Up Chevrolet 2500 & 3500HD 8.1L or Diesel 2001 & Up GMC 2500 & 3500HD 8.1L or Diesel	Diesel/8.1	3.42	GPDURMAX-3.42
	Diesel/8.1	3.73	GPDURMAX-3.73
	Diesel/8.1	4.11	GPDURMAX-4.11
	Diesel/8.1	4.56	GPDURMAX-4.56
	Diesel/8.1	4.88	GPDURMAX-4.88
2009 - 2014 Chevrolet 1500 2009 - 2014 GMC 1500		4.11	GPK15000914-4.11
		4.30	GPK15000914-4.30
		4.56	GPK15000914-4.56
1999 - 2008 Chevrolet 1500 1999 - 2008 GMC 1500		4.88	GPK15000914-4.88
		4.11	GPK15009908-4.11
		4.30	GPK15009908-4.30
		4.56	GPK15009908-4.56
		4.88	GPK15009908-4.88
1988 - 1998 Chevrolet 1500 1988 - 1998 GMC 1500		5.13	GPK15009908-5.13
		4.11	GPK15008898-4.11
		4.30	GPK15008898-4.30
		4.56	GPK15008898-4.56
		4.88	GPK15008898-4.88
	5.13	GPK15008898-5.13	
DODGE			
2003 & Up Ram 2500/3500 Diesel	11.5"	4.11	GPRAM-4.11
	11.5"	4.30	GPRAM-4.30
	11.5"	4.56	GPRAM-4.56
	11.5"	4.88	GPRAM-4.88
	11.5"	5.13	GPRAM-5.13
2002 - 2008 Ram1500		3.92	GPRAM1500-2-3.92
		4.11	GPRAM1500-2-4.11
		4.56	GPRAM1500-2-4.56
1994 - 2001 Ram 1500		3.92	GPRAM1500-3.92
		4.11	GPRAM1500-4.11
		4.56	GPRAM1500-4.56
		4.88	GPRAM1500-4.88
FORD			
2011 & Up F-250 & F-350		4.11	GPSD11PLUS-4.11
		4.30	GPSD11PLUS-4.30
2002 - 2010 F-250 & F-350		4.11	GPSD02-10-4.11
		4.30	GPSD02-10-4.30
		4.56	GPSD02-10-4.56
		4.88	GPSD02-10-4.88
		5.13	GPSD02-10-5.13
	5.38	GPSD02-10-5.38	
JEEP			
2007 & Up Wrangler JK Rubicon	Rubicon	4.56	GPJKRUBICON-4.56
	Rubicon	4.88	GPJKRUBICON-4.88
	Rubicon	5.13	GPJKRUBICON-5.13
	Rubicon	5.38	GPJKRUBICON-5.38
2007 & Up Wrangler JK All non-Rubicon models		4.11	GPJKNONRUB-4.11
		4.56	GPJKNONRUB-4.56
		4.88	GPJKNONRUB-4.88
		5.13	GPJKNONRUB-5.13
		4.11	GPWKXK-4.11
2005 - 2010 Grand Cherokee WK 2006 - 2010 Commander XK		4.11	GPWKXK-4.11

2003 - 2006 Wrangler TJ Rubicon	Rubicon	4.56	GPTJRUBICON-4.56
	Rubicon	4.88	GPTJRUBICON-4.88
	Rubicon	5.13	GPTJRUBICON-5.13
1997 - 2006 Wrangler TJ & LJ Model 35 Rear Axle	M35	4.11	GPTJ35-4.11
	M35	4.56	GPTJ35-4.56
	M35	4.88	GPTJ35-4.88
Dana 44 Rear Axle	D44	4.11	GPTJ44-4.11
	D44	4.56	GPTJ44-4.56
	D44	4.88	GPTJ44-4.88
2000 - 2001 Cherokee XJ Chrysler 8.25" Rear Axle	C8.25	4.11	GPXJ825-2-4.11
	C8.25	4.56	GPXJ825-2-4.56
	C8.25	4.88	GPXJ825-2-4.88
1990 - 1999 Cherokee XJ Chrysler 8.25" Rear Axle	C8.25	4.11	GPXJ825-4.11
	C8.25	4.56	GPXJ825-4.56
	C8.25	4.88	GPXJ825-4.88
1984 - 2000 Cherokee XJ 1987 - 1995 Wrangler YJ Model 35 Rear Axle	M35	3.73	GPXJYJ35-3.73
	M35	4.11	GPXJYJ35-4.11
	M35	4.56	GPXJYJ35-4.56
	M35	4.88	GPXJYJ35-4.88
TOYOTA			
2010 - 2013 FJ Cruiser 2010 - 2013 4 Runner 2010 - 2013 Prado 150	without	4.56	GPFJCRUISER-4.56-3
	w/ E-Lock	4.56	GPFJCRUISER-4.56-4
	without	4.88	GPFJCRUISER-4.88-3
	w/ E-Lock	4.88	GPFJCRUISER-4.88-4
2007 - 2009 FJ Cruiser 2003 - 2009 4 Runner 2003 - 2009 Prado 120 2005 & Up Hilux	without	4.10	GPFJCRUISER-4.10-1
	w/ E-Lock	4.10	GPFJCRUISER-4.10-2
	without	4.56	GPFJCRUISER-4.56-1
	w/ E-Lock	4.56	GPFJCRUISER-4.56-2
	without	4.88	GPFJCRUISER-4.88-1
	w/ E-Lock	4.88	GPFJCRUISER-4.88-2
2008 & Up Land Cruiser 200 Series		4.88	GPTOY200-4.88-1
1998 - 2007 Land Cruiser 100 Series	without	4.30	GPTOY100-4.30-1
	w/ E-Lock	4.30	GPTOY100-4.30-2
	without	4.88	GPTOY100-4.88-1
	w/ E-Lock	4.88	GPTOY100-4.88-2
1989 - 1997 Land Cruiser 80 Series 1991 - 1997 Land Cruiser 70/73/74/75 Series	without	4.10	GPFJ80-4.10-1
	w/ E-Lock	4.10	GPFJ80-4.10-2
	without	4.56	GPFJ80-4.56-1
	w/ E-Lock	4.56	GPFJ80-4.56-2
	without	4.88	GPFJ80-4.88-1
	w/ E-Lock	4.88	GPFJ80-4.88-2
Land Cruiser II LJ/RJ/ KZJ -70/73/78 Series Land Cruiser Bundera LJ/RJ/KZJ -70/73/78 Series	without	5.29	GPFJ80-5.29-1
	w/ E-Lock	5.29	GPFJ80-5.29-2
		4.30	GPLJ70-430
		4.56	GPLJ70-456
	4.88	GPLJ70-488	
	5.29	GPLJ70-529	
2005 & Up Tacoma	without	4.10	GPTACO05PLUS-4.10
	w/ E-Lock	4.10	GPFJCRUISER-4.10-2
	without	4.56	GPTACO05PLUS-4.56
	w/ E-Lock	4.56	GPFJCRUISER-4.56-2
	without	4.88	GPTACO05PLUS-4.88
	w/ E-Lock	4.88	GPFJCRUISER-4.88-2
1995.5 - 2004 Tacoma 2000 - 2006 Tundra	without	4.56	GPTACO96-04-4.56
	without	4.88	GPTACO96-04-4.88
	without	5.29	GPTACO96-04-5.29
2007 & Up Tundra	4.6L/4.7L	4.88	GPTOY200-4.88-1
	5.7L	4.88	GPTUNDRA5.7-4.88



Inner Axles

Application	Model	Length	Spline Diameter	U-Joint	Side	Part Number
JEEP						
74 - 81 Jeep CJ5 / CJ7	30	27.01"	1.16" - 27 Spline	5-760X	LH	AXN38789
74 - 81 Jeep CJ5 / CJ7	30	14.14"	1.16" - 27 Spline	5-760X	RH	AXN38803
82 - 86 Jeep CJ5 / CJ7 / CJ8	30	28.69"	1.16" - 27 Spline	5-760X	LH	AXN38804
82 - 86 Jeep CJ5 / CJ7 / CJ8	30	28.69"	1.16" - 30 Spline	5-760X	LH	AXN38804-30
82 - 86 Jeep CJ5 / CJ7 / CJ8	30	15.82"	1.16" - 27 Spline	5-760X	RH	AXN38805
84 & Up XJ, YJ, ZJ, TJ, MJ	30	16.63"	1.16" - 27 Spline	5-760X	LH	AXN38821
84 & Up XJ, YJ, ZJ, TJ, MJ	30	16.63"	1.16" - 30 Spline	5-760X	LH	AXN38821-30
87 - 96 Jeep YJ / XJ	30	32.36"	1.16" - 27 Spline	5-760X	RH	AXN38875
84 - 90 XJ, 97 & Up TJ, 87 & Up YJ	30	32.36"	1.16" - 30 Spline	5-760X	RH	AXN38875-30
97 & Up Jeep TJ / XJ / ZJ / Unlimited	30	16.63"	1.16" - 27 Spline	5-760X	LH	AXN38821
97 & Up Jeep TJ / XJ / ZJ / Unlimited	30	16.63"	1.16" - 30 Spline	5-760X	LH	AXN38821-30
97 & Up Jeep TJ / XJ / ZJ / Unlimited	30	32.31"	1.16" - 27 Spline	5-760X	RH	AXN38875
97 & Up Jeep TJ / XJ / ZJ / Unlimited	30	32.31"	1.16" - 30 Spline	5-760X	RH	AXN38875-30
03 & Up TJ Rubicon	44	16.96"	1.31" - 30 Spline	5-760X	LH	AXN39601
03 & Up TJ Rubicon	44	31.84"	1.31" - 30 Spline	5-760X	RH	AXN39602
Jeep JK Sleeve Kit, Up to 35 Spline Axles	30/44					AXD44JK-SLEEVE
Jeep JK Gusset Kit -6 Piece, Weld-In Kit	JK					NP JKGUSSET-KIT
Jeep TJ Sleeve Kit	TJ					AXD44TJ-SLEEVE
INTERNATIONAL						
71 - 80 Scout	44	32.91"	1.31" - 30 Spline	5-760X	LH	AXN38790
73 - 80 Scout	44	14.78"	1.31" - 30 Spline	5-760X	RH	AXN38808
FORD						
71 - 77 Bronco	44	18.4"	1.31" - 30 Spline	5-297X	LH	AXN38809
71 - 77 Bronco	44	27.94"	1.31" - 30 Spline	5-297X	RH	AXN38810
78 - 79 Bronco / 68 - 79 F150	44	18.91"	1.31" - 30 Spline	5-297X	LH	AXN39143
78 - 79 Bronco / 68 - 79 F150	44	33.91"	1.31" - 30 Spline	5-297X	RH	AXN39144
GM/CHEVROLET						
79 & Up GM 1/2, 3/4 Ton	8.5	35.46"	1.27" - 28 Spline	5-760X	LH	AXN39253
79 - 87 GM 1/2, 3/4 Ton	8.5	19.15"	1.27" - 28 Spline	5-760X	RH	AXN39252
79 & Up GM 1/2, 3/4 Ton	8.5	35.46"	1.31" - 30 Spline	5-760X	LH	AXN39255
79 & Up GM 1/2, 3/4 Ton	8.5	19.15"	1.31" - 30 Spline	5-760X	RH	AXN39254
69 - 80 GM 1/2 Ton	44	36.13"	1.31" - 30 Spline	5-760X	LH	AXN39529
69 - 80 GM 1/2 Ton	44	18.4"	1.31" - 30 Spline	5-760X	RH	AXN38809

Outer Axles

Application	Model	Length	Spline Diameter	U-Joint	Side	Part Number
JEEP						
72 - 86 Jeep CJ5 / CJ7	30	8.72"	1.16" - 27 Spline	5-297X	Same	AXN39105
87 & Up Wrangler TJ / YJ / XJ / Rubicon	30 / 44	6.11"	1.16" - 27 Spline	5-760X	Same	AXN39125
INTERNATIONAL						
73 - 80 Scout	44	8.72"	1.31" - 30 Spline	5-297X	Same	AXN39105
FORD						
71 - 79 Bronco / F150	44	9.72"	1.25" - 19 Spline	5-297X	Same	AXN38816
71 - 79 Bronco / F150	44	9.72"	1.31" - 30 Spline	5-297X	Same	AXN38816-30
GM/CHEVROLET						
73 - 78 GM 1/2 Ton	8.5 / 44	9.94"	1.25" - 19 Spline	5-297X	Same	AXN38815
73 - 78 GM 1/2 Ton	8.5 / 44	9.94"	1.31" - 30 Spline	5-297X	Same	AXN38815-30



Inner Shafts

Application	Model	Length	Spline Diameter	U-Joint	Side	Part Number
CUSTOM						
Custom Short Side Inner D60 (BLANK)	60	Up to 22"	Custom	5-806X	Short	AXND60-4340S
Custom Long Side Inner D60 (BLANK)	60	Up to 39"	Custom	5-806X	Long	AXND60-4340L
CHEVROLET/ GM						
Chevrolet Full Width	60	17.67"	1.50" - 35	5-806X	Short	AXN48208
80 - 86 Chevrolet Full Width	60	35.10"	1.50" - 35	5-806X	Long	AXN48210
DODGE						
Dodge Full Width	60	15.96"	1.50" - 35	5-806X	Short	AXN48202
79 - 93 Dodge Full Width	60	35.10"	1.50" - 35	5-806X	Long	AXN48210
FORD						
Ford Full Width	60	18.7"	1.50" - 35	5-806X	Short	AXN48206
Ford Full Width	60	34.56"	1.50" - 35	5-806X	Long	AXN48216
D50 Ford SuperDuty Short Side - 1541H	50	15.90"	1.50" - 30	5-806X	Short	AXN48200
D50 Ford SuperDuty Long Side - 1541H	50	37.10"	1.50" - 30	5-806X	Long	AXN48201
Ford SuperDuty	60	16.17"	1.50" - 35	5-806X	Short	AXN48204
Ford SuperDuty	60	36.97"	1.50" - 35	5-806X	Long	AXN48214

Outer Shafts

Application	Model	Length	Spline Diameter	U-Joint	Side	Part Number
CHEVROLET/ GM						
Chevrolet / GM Outer	60	12.00"	1.50" - 35	5-806X	Same	AXN46100
Chevrolet / GM Outer	60	12.00"	1.31" - 30	5-806X	Same	AXN46105
Chevrolet / GM Outer	60/70	12.00"	1.50" - 40	5-332X	Same	AXN46106
FORD						
99 - 04 Ford superduty (unit brg)	60	9.49"	1.50" - 35	5-806X	Same	AXN46102
99 - 04 Ford superduty (unit brg)	50 / 60	9.49"	1.31" - 30	5-806X	Same	AXN46103
77 & Up Ford Outer	60	11.40"	1.50" - 35	5-806X	Same	AXN46101



4340 Axle Kits

Application	Model	Length	Inner Spline Dia.	U-Joint	Outer Spline Dia.	Part Number
JEEP						
72 - 81 Jeep CJ5 / CJ7, narrow track	D30	27.01"/14.14"	1.16" - 27 Spline	5-760X	8.72" - 27	AXN24106**
84 & Up Jeep XJ, YJ, TJ, ZJ, MJ	D30	16.63"/32.3"	1.16" - 27 Spline	5-760X	6.11" - 27	AXN24110**
84 & Up Jeep XJ, YJ, TJ, ZJ, MJ (30 sp upgrade)	D30	16.63"/32.3"	1.31" - 30 Spline	5-760X	6.11" - 27	AXN24112**
07 & Up Jeep Wrangler JK	D30	18.8"/34.5"	1.16" - 27 Spline	1350 Big JK	6.33" - 32	AXN24113
82 - 86 Jeep CJ 5/7/8 wide track	D30	28.69"/15.82"	1.16" - 27 Spline	5-760X	8.72" - 27	AXN24114**
82 - 86 Jeep CJ 5/7/8 wide track (30 sp upgrade)	D30	28.69"/15.82"	1.31" - 30 Spline	5-760X	8.72" - 27	AXN24114-30*
07 & Up Jeep JK Rubicon (oe locker only!)	D44	19.90"/33.57"	1.31" - 30 Spline	1350 Big JK	6.33" - 32	AXN24115
74 - 79 Wagoneer W/Drums	D44	33.19"/14.78"	1.31" - 30 Spline	5-760X	9.72" - 19	AXN24142**
74 - 79 Wagoneer W/Disc	D44	33.19"/14.78"	1.31" - 30 Spline	5-760X	9.94" - 19	AXN24146**
03 - 06 Jeep Wrangler TJ Rubicon	D44	16.96"/31.84"	1.31" - 30 Spline	5-760X	6.11" - 27	AXN24108**
80 - 92 Wagoneer / Grand Wagoneer	D44	15.8"/32.12"	1.31" - 30 Spline	5-760X	9.94" - 19	AXN24140**
INTERNATIONAL						
71 - 80 IHC Scout	D44	32.91"/14.78"	1.31" - 30 Spline	5-760X	8.72" - 27	AXN24126**
FORD						
66 - 71 Bronco	D30	18.44"/28.06"	1.16" - 27 Spline	5-760X	9.72" - 19	AXN24117**
78 - 79 F250	D44 REV	18.44"/34.75"	1.31" - 30 Spline	5-760X	9.72" - 19	AXN24138**
71 - 77 Bronco	D44	18.44"/27.94"	1.31" - 30 Spline	5-760X	9.72" - 19	AXN24130**
78 - 79 Bronco / 68-79 F 150	D44 REV	33.91"/18.91"	1.31" - 30 Spline	5-760X	9.72" - 19	AXN24134**
78 - 79 F350 Sno-Fighter	D60 REV	34.56"/18.7"	1.50" - 35 Spline	5-806X	11.4" - 35	AXN26010*
88 - 98 F350	D60 REV	36.97"/16.17	1.50" - 35 Spline	5-806X	11.4" - 35	AXN26018*
GM/CHEVROLET						
69 - 80 GM Truck, Blazer	8.5	35.46"/19.15"	1.31" - 30 Spline	5-760X	9.94" - 19	AXN24150**
77 - 87 GM 1/2, 3/4 Ton	8.5	35.46"/19.15"	1.27" - 28 Spline	5-760X	9.94" - 19	AXN24118**
77 - 87 GM 1/2, 3/4 Ton	8.5	45.40"/29.09"	1.31" - 30 Spline	5-760X	9.94" - 19	AXN24122**
73 - 78 GM 1/2 Ton	D44	36.13"/18.31"	1.31" - 30 Spline	5-760X	9.94" - 19	AXN24150**
71 - 91 GM Full Width K30	D60	35.10"/17.67"	1.50" - 35 Spline	5-806X	12" - 35	AXN26002*
DODGE						
75 - 93 Dodge 3/4 & 1 ton	D60	35.10"/15.96"	1.50" - 35 Spline	5-806X	12" - 35	AXN26003*
NISSAN						
87 - 97 Nissan Patrol & Safari GQ Y60	H233B					AXNISBIRF-Y60KIT
98 & Up Nissan Patrol GU Y61	H233B					AXNISBIRF-Y61KIT

*Also available with NP 806X-EXC competition U-Joints
 **Also available with NP 760X-EXC competition U-Joints



Toyota Front Birfields

Application	Model	Length	Spline Diameter	U-Joint	Side	Part Number
TRUCK AND LANDCRUISER - INNER AXLES HD CHROMOLY, RETAINS OE SPLINE AT BIRFIELD TO WORK WITH OE JOINTS						
FJ40, BJ70	Landcruiser	29.06" OAL	1.31" - 30 / 1.16"-27		Birfield LH	AXTFJ40LH-27
FJ40, BJ70, FJ60	Hilux / Landcruiser	17.25" OAL	1.31" - 30 / 1.16"-27		Birfield RH	AXTFJ40RH-27
Solid axle P/U, 4RUN	Hilux / Landcruiser	15.33" OAL	1.31" - 30 / 1.16"-27		Birfield RH	AXT7985RH-27
Solid axle P/U, 4RUN, FJ60	Hilux / Landcruiser	31.44" OAL	1.31" - 30 / 1.16"-27		Birfield LH	AXT7985LH-27
LC 80	Landcruiser	34.25" OAL	1.31" - 30 / 1.31"-BIG 24		Birfield LH	AXTFJ80-LH
LC 80	Landcruiser	17.75" OAL	1.31" - 30 / 1.31"-BIG 24		Birfield RH	AXTFJ80-RH
30/30 AXLE KITS - HIGH STRENGTH CHROMOLY, UPGRADES THE 27 SPLINE OE INNER SHAFT TO 30 AT BIRFIELD.						
Solid axle P/U & 4runner	Hilux / Landcruiser	15.33" / 31.44"	1.31"-30 / 1.31"-30		Birfield RH/LH	AXTBIRF-30-KIT
FJ40/45/55/ BJ/HJ70	Hilux / Landcruiser	17.25" / 29.06"	1.31"-30 / 1.31"-30		Birfield RH/LH	AXTBIRF-FJ40-KIT
LC 60 / 62	Landcruiser	17.25" / 31.44"	1.31"-30 / 1.31"-30		Birfield RH/LH	AXTBIRF-30-KIT
LC II, LJ/RJ70	Landcruiser	16.3" / 30.25"	1.31"-30 / 1.31"-30		Birfield RH/LH	AXTBIRF-LJ70KIT
LC 80 1991-1997	Landcruiser					
BIRFIELD JOINTS - RETAINS OE SPLINE AT BIRFIELD TO WORK WITH OE INNER AXLES.						
FJ40, BJ70, LJ70, FJ60, P/U 4RUN (STD)	Hilux / Landcruiser	9.60"	1.31"-27 fits OE inner		Birfield Same	AXTBIRF
FJ40, BJ70, LJ70, FJ60, P/U 4RUN (CHROMO)	Hilux / Landcruiser	9.60"	1.16"-27 fits OE inner		Birfield Same	AXTBIRF-4340
LC 80 95-97 (STD)	Landcruiser	9.69"	1.31"-BIG 24 fits OE or HD Inner		Birfield Same	AXTBIRF-FJ80
LC 80 (CHROMO)	Landcruiser	9.69"	1.31"-BIG 24 fits OE or HD Inner		Birfield Same	AXTBIRF-FJ80HD*

*Later design fits thicker 95-97 drive flange, (90-94 ALSO REQUIRE 43421-60040)

Toyota Rear Axles

Application	Model	Length	Spline Diameter	U-Joint	Side	Part Number
SEMI FLOAT						
07 & Up FJ Cruiser			1.31" 30-spline			AXT60240
03 - 09 4Runner						
02 - 08 LC, Prado 120 (Non US)						
03 - 08 Lexus GX470						
79-85 Truck	Truck / 4Runner	26.75"	1.31" - 30		RH/LH	AXT35140
86-95 Truck	Truck / 4Runner	28.12"	1.31" - 30		RH/LH	AXT35310
96-04 Truck	Tacoma / 4Runner	29.06"	1.31" - 30		RH/LH	AXT35550
FULL FLOAT						
FJ40/45/75	Chromoly		1.31" - 30 Spline		RH/LH	AXTFF-FJ40
FJ60/HJ60/62	Chromoly		1.31" - 30 Spline		RH/LH	AXTFF-FJ60
FZJ80/HDJ80	Chromoly		1.31" - 30 Spline		RH/LH	AXTFF-FJ80
Cut to Length	Chromoly	30.5"-38.25"	1.31" - 30 Spline		LH	AX TFF30-L
Cut to Length	Chromoly	21.5"-28.9"	1.31" - 30 Spline		RH	AX TFF30-R
FJ40/45			1.31" - 30 Spline			AXTFF-FJ40
FJ60/62, HJ60			1.31" - 30 Spline			AXTFF-FJ60
FZJ80, HDJ80			1.31" - 30 Spline			AXTFF-FJ80
LC40/60/80 Series Cut to length	CTL	30.5"-38.25"	1.31" - 30 Spline			AXTFF30-L
LC40/60/80 Series Cut to length	CTL	21.5"-28.9"	1.31" - 30 Spline			AXTFF30-R



Jeep Rear Axles

Application	Model	Length	Spline	Bolt Circle	Stud Hole	Brake Pilot	Bearing	Side	Part Number
CJ, WRANGLER + TJ									
76-83 Jeep CJ5/CJ7 76-81(pair) Narrow Track	AMC 20	26.25"/23.25"	29	5x5.5"	Press	4.160"	1.378"	PAIR**	AXCJS (Kit)
82 - 86 Jeep CJ7 / CJ8 (pair)Wide Track	AMC 20	28.31"/25.31"	29	5x5.5"	Press	4.160"	1.378"	PAIR**	AXCJL (Kit)
CJ Series with Quadtrac (pair)	AMC 20	19.25" / 30.50"	29	5x5.5"	Press	4.160"	1.378"	PAIR**	AXCJQ (Kit)
90 & Down YJ/XJ (bolt-in)	D35	30.35"	30	5x4.5"	Press	2.840"	1.375"	RH	AXM35B-30-R*
90 & Down YJ/XJ (bolt-in)	D35	28.85"	30	5x4.5"	Press	2.840"	1.375"	LH	AXM35B-30-L*
91 & Up Jeep YJ, XJ, TJ, MJ, ZJ(C-clip)	D35	30.54"	30	5x4.5"	Screw	2.840"	1.400"	RH	AXM35C-30-R*
91 & Up Jeep YJ, XJ, TJ, MJ, ZJ(C-clip)	D35	29.04"	30	5x4.5"	Screw	2.840"	1.400"	LH	AXM35C-30-L*
TJ / XJ & Rubicon (pair)	D44	29.75"/29.25"	30	5x4.5" multi	Screw	2.840"	incl.	PAIR**	AXD44TJ-REAR-30
TJ / XJ & Rubicon (pair) 35 SPLINE	D44	29.75"/29.25"	35	5x4.5" multi	Screw	2.840"	incl.	PAIR**	AXD44TJ-REAR-35*

*Larger spline, must use aftermarket Locker

**All rear pairs are loaded and include bearings, backing plates, and ABS rings where applicable

JK REAR AXLES 07+

07 & Up Wrangler JK (non-rubi-con) (pair)	D44	31.75"/31.75"	30	5x5" multi	Screw	2.840"	incl.	PAIR**	AXD44JK-REAR-30
07 & Up Wrangler JK Rubicon 32 SPLINE	D44	31.75"/31.75"	32	5x5" multi	Screw	2.840"	incl.	PAIR**	AXD44JK-REAR-32
07 & Up Wrangler JK (ALL) (pair) 35 SPLINE	D44	31.75"/31.75"	35	5x5" multi	Screw	2.840"	incl.	PAIR**	AXD44JK-REAR-35*

*Larger spline, must use aftermarket Locker

**All rear pairs are loaded and include bearings, backing plates, and ABS rings where applicable

UNIVERSAL CUT TO LENGTH (CTL)

D44 CTL CJ, TJ, XJ, MJ, JK, IHC, ETC	D44	CTL 24.5-34"	30	5X4.5/5/5.5"	Screw	2.840"	1.564"	RH/LH	AXD44-30-CTL
D44 CTL CJ, TJ, XJ, MJ, JK, IHC, ETC	D44	CTL 24.5-34"	35	5X4.5/5/5.5"	Screw	2.840"	1.564"	RH/LH	AXD44-35-CTL*

*Larger spline, must use aftermarket Locker

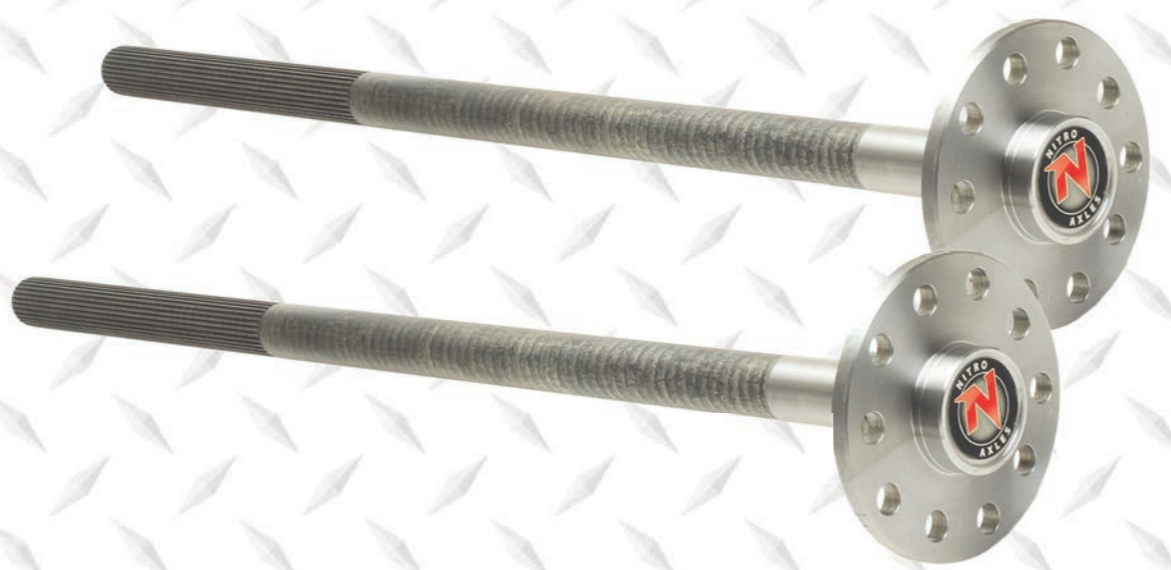
CHEROKEE + GRAND CHEROKEE

Cherokee XJ 96 & Down 8.25"	8.25"	29.75	27	5x4.5"	Press	2.840	1.620	RH/LH	AXC53008134
Cherokee XJ 96.5 - 01 8.25"	8.25"	29.75	29	5x4.5"	Press	2.840	1.620	RH/LH	AXC52098902
90 & Down YJ/XJ (bolt-in)	D35	30.35"	27	5x4.5"	Press	2.840"	1.375"	RH	AXM35B-27-R
90 & Down YJ/XJ (bolt-in)	D35	28.85"	27	5x4.5"	Press	2.840"	1.375"	LH	AXM35B-27-L
91 & Up Jeep YJ, XJ, TJ, MJ, ZJ(C-clip)	D35	29.04	27	5x4.5"	Screw	2.840	1.400	RH	AXM35C-27-R
91 & Up Jeep YJ, XJ, TJ, MJ, ZJ(C-clip)	D35	30.54	27	5x4.5"	Screw	2.840	1.400	LH	AXM35C-27-L
ZJ Grand Cherokee D44A	D44A	29.375"	30	5x4.5"	Press	2.840"	1.400	RH	AXD74871-1X
ZJ Grand Cherokee D44A	D44A	30.375"	30	5x4.5"	Press	2.840"	1.400	LH	AXD74871-2X
99 - 04 WJ Grand Cherokee M35	D35	30.25"	27	5x5"	incl.	2.840"	incl.	RH	AXD76467-3X
99 - 04 WJ Grand Cherokee M35	D35	31.74"	27	5x5"	incl.	2.840"	incl.	LH	AXD76467-4X
99 - 04 WJ Grand Cherokee 44a w/o varilok	D44A	30.34"	30	5x5"	incl.	2.840"	incl.	RH	AXD76454-3X
99 - 04 WJ Grand Cherokee 44a w/o varilok	D44A	31.34"	30	5x5"	incl.	2.840"	incl.	LH	AXD76454-4X
99 - 04 WJ Grand Cherokee 44a w/ varilok	D44A	29.34"	30	5x5"	incl.	2.840"	incl.	RH	AXD76454-1X
99 - 04 WJ Grand Cherokee 44a w/ varilok	D44A	32.33"	30	5x5"	incl.	2.840"	incl.	LH	AXD76454-2X



Ford/Lincoln/Mercury/Mazda Truck Axles

Application	Model	Length	Spline	Circle	Hole	Pilot	Surface	Side	Part Number
FORD/ TRUCK									
83 - 92 Ranger	7.5"	26.25	28	5x4.5"	Press	2.525	1.400	RH	AXF750002
83 - 92 Ranger / Bronco II	7.5"	29.12	28	5x4.5"	Press	2.525	1.400	LH	AXF750004
83 - 91 Bronco II	7.5"	27.68	28	5x4.5"	Press	2.525	1.400	RH	AXF750005
86 - 97 Aerostar	7.5"	29.12	28	5x4.5"	Press	2.525	1.400	RH	AXF750004
86 - 97 Aerostar	7.5"	32.25	28	5x4.5"	Press	2.525	1.400	LH	AXF750008
83 - 86 F150 / Bronco & 83 F100	8.8"	31.06	31	5x5.5"	Press	2.870	1.620	RH	AXF880002
83 - 86 F150 / Bronco & 83 F100	8.8"	33.18	31	5x5.5"	Press	2.870	1.620	LH	AXF880003
87 - 96 F150 / Bronco & 87-96 E150	8.8"	31.06	31	5x5.5"	Press	3.415	1.620	RH	AXF880007
87 - 96 F150 / Bronco	8.8"	33.18	31	5x5.5"	Press	3.415	1.620	LH	AXF880008
87 - 96 E150	8.8"	35.62	31	5x5.5"	Press	3.415	1.620	LH	AXF880006
93 - 98 Ranger	7.5/8.8"	27.25	28	5x4.5"	Press	2.525	1.400	RH	AXF880020
93 - 98 Ranger	7.5/8.8"	30.25	28	5x4.5"	Press	2.525	1.400	LH	AXF880019
99 & Up Ranger	7.5/8.8"	27.25	28	5x4.5"	Press		1.400	RH	AXF880036
99 & Up Ranger	7.5/8.8"	30.25	28	5x4.5"	Press		1.400	LH	AXF880035
90 - 94 Explorer / Mazda Navajo	8.8"	27.75	31	5x4.5"	Press	2.795	1.620	RH	AXF880004
90 - 94 Explorer / Mazda Navajo	8.8"	30.62	31	5x4.5"	Press	2.795	1.620	LH	AXF880005
95 - 01 Explorer & Mountaineer	8.8"	27.62	31	5x4.5"	Press		1.620	RH	AXF880014
95 - 01 Explorer & Mountaineer	8.8"	30.5	31	5x4.5"	Press		1.620	LH	AXF880015
97 - 03 F150 & Expedition (NOT IRS)	8.8"	31.75	31	5x135	Press	3.415	1.620	RH	AXF880033
97 - 03 F150 & Expedition (NOT IRS)	8.8"	33.37	31	5x135	Press	3.415	1.620	LH	AXF880034
04 - 08 F150 & Expedition (NOT IRS)	8.8"	33.75	31	6x135	Press	3.415	1.705	RH	AXF880045
04 - 08 F150 & Expedition (NOT IRS)	8.8"	35.375	31	6x135	Press	3.415	1.705	LH	AXF880046
74 - 86 F150, 78-86 Bronco	9"	31.84	31	5x135	Press	2.870	1.565	RH & LH	AXF900001
97 - 03 F150 & Expedition (NOT IRS)	9.75"	33.37	34	5x135	Press	3.430	1.620	LH	AXF975002
97 - 03 F150 & Expedition (NOT IRS)	9.75"	31.75	34	5x135	Press	3.430	1.620	RH	AXF975001
97 - 03 F150 & Expedition (NOT IRS)	9.75"	31.25	34	5x135	Press	3.430	1.705	RH	AXF975003
97 - 03 F150 & Expedition (NOT IRS)	9.75"	33.37	34	5x135	Press	3.430	1.705	LH	AXF975004
04 - 08 F150	9.75"	33.75	34	6X135	Press	3.430	1.705	RH	AXF975005
04 - 08 F150	9.75"	35.375	34	6X135	Press	3.430	1.705	LH	AXF975006
09 & Up F150	9.75"	33.75	34	6X135	Press	3.430	1.705	RH	AXF975009
09 & Up F150	9.75"	35.375	34	6X135	Press	3.430	1.705	LH	AXF975010
86 - 97 F250, Semi Float	10.25"	30.56	35	8x6.5"	Press	4.695	1.705	RH	AXF100001
86 - 97 F250, Semi Float	10.25"	33.00	35	8x6.5"	Press	4.695	1.705	LH	AXF100002
05 - 08 F150HD, F250LD, Semi Float 7LUG	10.25"	33.75	35	7 LUG	Press	4.695	1.705	RH	AXF100003
05 - 08 F150HD, F250LD, Semi Float 7LUG	10.25"	35.375	35	7 LUG	Press	4.695	1.705	LH	AXF100004
05 - 08 F150HD, F250LD, Semi Float 7LUG	10.25"	31.75	35	7 LUG	Press	4.695	1.705	RH	AXF100005
F250 F350 FULL FLOAT	10.25"	41.5	35					LH/RH	AXF100010
F250 F350 FULL FLOAT	10.25"	37.75	35					LH/RH	AXF100013
CUT-TO-LENGTH (CTL)									
UNIVERSAL CUSTOM	9"	25.5" - 32.87"	31	5X4.5"/4.75"/5.5"	TRIPLE		1.564	LH/RH	AXF9-31-32.87
UNIVERSAL CUSTOM	9"	24" - 34"	35	6x5.5"	DOUBLE		1.564	LH/RH	AXF9-35-6CTL
UNIVERSAL CUSTOM	9"	22" - 31.8"	35	5x4.5"/5"/5.5"	TRIPLE			LH/RH	AXF9-35-CTL



Ford Car Axles

Application	Model	Length	Spline	Bolt Circle	Stud Hole	Brake Pilot	Bearing Surface	Side	Part Number
MUSTANG									
79 - 93 Mustang (5lug)	7.5/8.8"	29.25	28	5x4.5"	Press	2.525	1.400	LH/RH	AXF750004
79 - 93 Mustang (4lug)	7.5/8.8"	29.25	28	4x4.5"	Press	2.525	1.400	LH/RH	AXF750001
79 - 93 Mustang (5lug)	8.8"	29.25	31	5x4.5"	Press	2.525	1.400	LH/RH	AXFM4235C
79 - 93 Mustang (4lug)	8.8"	29.25	31	4x4.5"	Press	2.525	1.400	LH/RH	AXFM4235B
94 - 98 Mustang	7.5/8.8"	30	28	5x4.5"	Press	2.525	1.400	LH/RH	AXF880017
94 - 98 Mustang	8.8"	30	31	5x4.5"	Press	2.525	1.400	LH/RH	AXFM4235D
99 - 04 Mustang	7.5/8.8"	30.75	28	5x4.5"	Press	2.525	1.400	LH/RH	AXF880041
05 & Up Mustang V6	7.5"	32	28	5x4.5"	Press	2.780	1.620	LH	AXF750043
05 & Up Mustang V6	7.5"	32.75	28	5x4.5"	Press	2.780	1.620	RH	AXF750044
05 & Up Mustang	8.8"	31.75	31	5x4.5"	Press	2.780	1.620	LH	AXF880043
05 & Up Mustang	8.8"	32.75	31	5x4.5"	Press	2.780	1.620	RH	AXF880044
66 - 70 Mustang	9"	27.12	31	5x4.5"	Press	2.430	1.378	LH	AXF8-6770MUS-31L
66 - 70 Mustang	9"	31.25	31	5x4.5"	Press	2.430	1.378	RH	AXF8-6770MUS-31R
71 - 72 Mustang	9"	27.87	31	5x4.5"	Press	2.430	1.378	LH	AXF8-7172MUS-31L
71 - 72 Mustang	9"	31.87	31	5x4.5"	Press	2.430	1.378	RH	AXF8-7172MUS-31R
FORD, LINCOLN, MERCURY, CARS									
T-Bird, Cougar non-abs	7.5/8.8"	29.25	28	4x4.5"	Press	2.525	1.400	LH/RH	AXF750001
84 - 88 T-Bird, Cougar non-abs	7.5/8.8"	30	28	4x4.5"	Press	2.525	1.400	LH/RH	AXF750006
88 - 90 Lincoln Mark VII	7.5/8.8"	30.5"	28	5x4.5"	Press	2.525	1.400	LH/RH	AXF750007
79 - 89 LTD, LINCOLN	7.5/8.8"	31	28	5x4.5"	Press	2.525	1.400	LH/RH	AXF750009
90 - 97 Crown Victoria (non-abs)	7.5/8.8"	31	28	5x4.5"	Press	2.430	1.400	LH/RH	AXF750010
88 & Up T-Bird, Cougar with abs	7.5/8.8"	30	28	5x4.5"	Press	2.525	1.400	LH/RH	AXF880009
91 - 94 Lincoln Mark VII	7.5/8.8"	31.5	28	5x4.5"	Press	2.525	1.400	LH/RH	AXF880010
98 - 02 Lincoln Towncar Limo, abs	8.8"	32.25	31	5x4.5"	Press	2.430	1.400	LH/RH	AXF880011
90 - 97 Lincoln Towncar Limo, abs	8.8"	31.625	31	5x4.5"	Press	2.430	1.400	LH/RH	AXF880016
91 - 98 Crown Vic, Lincoln, abs	8.8"	31.625	28	5x4.5"	Press	2.430	1.400	LH/RH	AXF880018
98 - 02 Crown Vic, Lincoln, abs	8.8"	32.25	31	5x4.5"	Press	2.430	1.400	LH/RH	AXF880021
99 - 02 Crown Vic, Lincoln, abs	8.8"	32.25	28	5x4.5"	Press	2.430	1.400	LH/RH	AXF880022
03 & Up Crown Vic, abs	8.8"	34.375	28	5x4.5"	Press	2.430	1.400	LH/RH	AXF880038
03 & Up Crown Vic, abs	8.8"	34.375	31	5x4.5"	Press	2.430	1.400	LH/RH	AXF880039
CUT TO LENGTH (CTL)									
Universal 9", car, hotrod, custom	8",9"	23.5-32.87 CTL	28	5x4.5/4.75/5"	Press	2.525	1.378*	LH/RH	AXF8-28-32.87
Universal 9", car, hotrod, custom	8",9"	23.5-32.87 CTL	31	5x4.5/4.75/5"	Press	2.525	1.378*	LH/RH	AXF9-31-32.87
UNIVERSAL 9" (LARGE BRG)	9"	24.5-34"	35	5X4.5/5/5.5	SCREW		1.565	LH/RH	AXF9-35-CTL
UNIVERSAL CUSTOM	9"/ 8.75"	24" - 34"	35	6x5.5	SCREW	2.83	1.565	LH/RH	AXF9-35-6CTL

*Small brg housing end use RW207CCRA, Large brg use AK F9-NITRO



GM Truck Axles

Application	Model	Length	Spline	Bolt Circle	Stud Hole	Brake Pilot	Bearing Surface	Side	Part Number
S10/S15, CANYON, COLORADO, H3									
83 - 89 2WD S10/S15	7.5/7.625"	26.625	26	5x4.75	Press	2.760	1.400	LH/RH	AXG14030355
83 - 89 4WD S10/S15	7.5/7.625"	29.00	26	5x4.75	Press	2.760	1.400	LH/RH	AXG14035368
88 - 97 2WD S10/S15	7.5/7.625"	26.875	28	5x4.75	Press	2.760	1.400	LH/RH	AXG26009534
88 - 97 4WD S10/S15	7.5/7.625"	29.125	28	5x4.75	Press	2.760	1.400	LH/RH	AXG26013882
88 - 97 4WD S10/S15 ABS	7.5/7.625"	29.125	28	5x4.75	Press	2.760	1.400	LH/RH	AXG26015260
94 - 97 S10 ZR2	8.5"	31.125	30	5x4.75	Press	2.760	1.620	LH/RH	AXG26027706
98 - 05 S10 4WD	8.5/8.6"	28.875	30	5x4.75	Press	2.760		LH/RH	AXG26058079
98 & Up S10 ZR2	8.5/8.6"	31	30	5x4.75	Press	2.760	1.620	LH/RH	AXG26058547
88 - 94 2WD S10	7.5/7.625"	26.625	30	5x4.75	Press	2.760	1.400	LH/RH	AXG26015759
98 - 02 S10 W/DISC	7.625"	26.625	28	5x4.75	Press	2.760		LH/RH	AXG26058696
98 - 03 S10 BLAZER 2WD	8.5/8.6"	26.5	30	5x4.75	Press	2.760	1.400	LH/RH	AXG26058925
95 - 99 S10	8.5"	26.75	30	5x4.75	Press	2.760	1.400	LH/RH	AXG26060018
98 - 02 S10 EXTREME	8.5"	26.75	28	5x4.75	Press	2.760	1.400	LH/RH	AXG26064388
04 & Up Colorado/Canyon 4wd	8.0"	29.8	28	6x5.5	Press	3.760	1.620	RH	AXG12479336
04 & Up Colorado/Canyon 4wd	8.0"	31.8	28	6x5.5	Press	3.760	1.620	LH	AXG12479337
04 & Up Colorado/Canyon 2wd	8.0"	28.625	28	6x5.5	Press		1.620	RH	AXG12479338
04 & Up Colorado/Canyon 2wd	8.0"	30.68	28	6x5.5	Press		1.620	LH	AXG12479339
02 & Up Trailblazer/Envoy	8.0"	33.25	28	6x5.5	Press	2.890	1.620	LH	AXG12479016
02 & Up Trailblazer/Envoy	8.0"	30.75	28	6x5.5	Press	2.890	1.620	RH	AXG12479017
02 & Up Trailblazer/Envoy, EXT, XL	8.6"	33.125	30	6x5.5	Press		1.620	LH	AXG12479160
02 & Up Trailblazer/Envoy, EXT, XL	8.6"	31.56	30	6x5.5	Press		1.620	RH	AXG12479161
Hummer H3	8.6"	33.75	30	6x5.5	Press		1.620	LH/RH	AXG40022632
87 - 90 Grumman LLV Postal Vehicle	7.5/7.625"	31.125	26	5x4.75	Press	2.760	1.400	LH/RH	AXG26004859
91 - 96 Grumman LLV Postal Vehicle	7.5/7.625"	31.125	28	5x4.75	Press	2.760	1.400	LH/RH	AXG26016760
85 - 89 Astro Van	7.5/7.625"	34.75	26	5X5	Press	3.090	1.400	LH	AXG14074821
85 - 89 Astro Van	7.5/7.625"	30.5	26	5X5	Press	3.090	1.400	RH	AXG14074822
89 - 98 Astro Van	7.5/7.625"	34.81	28	5X5	Press	3.090	1.400	LH	AXG26011054
89 - 98 Astro Van	7.5/7.625"	30.31	28	5X5	Press	3.090	1.400	RH	AXG26011055
03 & Up Astro Van	7.625"	34.81	28	6X5.5	Press	3.090	1.620	LH	AXG12479210
03 & Up Astro Van	7.625"	30.31	28	6X5.5	Press	3.090	1.620	RH	AXG12479211
Van G10 G20 (12 bolt)	12B Truck	33.31	30	5X5	Press	3.089	1.620	LH/RH	AXG26013313
79 - 88 Van G10 G20	10B 8.5"	33.31	28	5X5	Press	3.089	1.620	LH/RH	AXG14042690
81 - 95 Van G30	14B 9.5"	36	33	8X6.5"	Press	3.550	1.706	LH/RH	AXG14035355
88 - 95 Van G10 G20	10B 8.5"	33.31	30	5X5	Press	3.089	1.620	LH/RH	AXG26013313
96 - 02 Van G10 G20	10B 8.5"	33.31	30	5X5	Press	3.089	1.620	LH/RH	AXG26042818
03 & Up EXPRESS VAN	10B 8.6"	34.5	30	6X5.5	Press			LH/RH	AXG12479175
1/2 TON TRUCK + SUV									
55 - 62 Truck *Req. IPKGM12T-S-30 or PT1910	55T D/O	30.18	30*	6X5.5	Press	3.060		LH	AXG3912475
55 - 62 Truck *Req. IPKGM12T-S-30 or PT1910	55T D/O	31.25	30*	6X5.5	Press	3.060		RH	AXG3912476
79 - 88 2WD C10, Blazer (old body)	10B 8.5"	31.38	28	5X5	Press	3.089	1.620	LH/RH	AXG14035542
79 - 88 4WD K10, K5 Blazer (old body)	10B 8.5"	31.5	28	6X5.5	Press	3.089	1.620	LH/RH	AXG14039547
88 - 98 2WD C1500	10B 8.5"	32	30	5X5	Press	3.089	1.620	LH/RH	AXG26010417
88 - 91 2WD Blazer / Suburban (old body)	10B 8.5"	31.5	30	5X5	Press	3.089	1.620	LH/RH	AXG26010415
88 - 91 4WD Blazer / Suburban (old body)	10B 8.5"	31.5	30	6X5.5	Press	3.089	1.620	LH/RH	AXG26010414
88 Only 4WD K1500	10B 8.5"	33.00	28	6X5.5	Press	3.089	1.620	LH/RH	AXG15521892
88 - 98 K1500, 92 - 99 Tahoe, Suburban	10B 8.5"	33.00	30	6X5.5	Press	3.089	1.620	LH/RH	AXG26010416
99 - 06 2WD & 4WD C/K1500, TAHOE, SUBURBAN	10B 8.6"	33.75	30	6X5.5	Press	3.092	1.620	LH/RH	AXG12471369
07 & Up 2WD & 4WD C/K1500, TAHOE, SUBURBAN	10B 8.6"	34	30	6X5.5	Press		1.620	LH/RH	AXG15286380
63 - 72 2WD & 4WD Truck	12B Truck	30.75	30	6X5.5	Press	3.060	1.620	LH/RH	AXG3893605
63 - 72 2WD & 4WD Truck (5 lug conv)	12B Truck	30.75	30	5X5	Press	3.060	1.620	LH/RH	AXG3893605-5LUG
71 - 81 2WD Truck C10	12B Truck	31.31	30	5X5	Press	3.060	1.620	LH/RH	AXG14071751
71 - 81 4WD Truck K10	12B Truck	31.31	30	6X5.5	Press	3.089	1.620	LH/RH	AXG14071750
81 - 88 4WD 1/2 Ton C10	12B Truck	31.31	34	6X5.5	Press	3.089	1.620	LH/RH	AXG14039547



3/4 + 1 TON TRUCK + SUV

81 - 95 Truck, Semi-float, 8 LUG	14B 9.5"	32.75	33	8X6.5	Press	4.615	1.706	LH/RH	AXG14035395
88 - 98 4WD K1500 & K2500 LD Semi-float	14B 9.5"	33.25	33	6X5.5	Press	3.550	1.706	LH/RH	AXG15521928
96 - 02 3/4, Semi-float, 8 LUG	14B 9.5"	33.625	33	8X6.5	Press	4.615	1.706	LH/RH	AXG26042829
90 - 93 C10 454SS	14B 9.5"	31.625	33	5x5	Press	4.615	1.706	LH/RH	AXG26016185
88 - 98 3/4, Semi-float 6 lug	14B 9.5"	31.68	33	6x5.5	Press	3.550	1.706	LH/RH	AXG15522068
88 - 98 3/4, Semi-float, 8 LUG	14B 9.5"	31.68	33	8X6.5	Press	4.615	1.706	LH/RH	AXG15522070
99 - 06 C/K1500HD, C/K2500	14B 9.5"	34.3	33	8X6.5	Press	4.615	1.706	LH/RH	AXG26060414
07 & Up Tahoe/Yukon HD, ABS	14B 9.5"	34.25	33	6X5.5	Press	3.550	1.706	LH/RH	AXG15812663
HUMMER H2	14B 9.5"	34.6	33	8X6.5	Press	4.615	1.706	LH/RH	AXG12479214
90 - 03 C/K30 Truck, Van, Suburban Full Float	14B 10.5"	37.5	30	Full Float	Press			LH	AXG26011161
90 - 03 C/K30 Truck, Van, Suburban Full Float	14B 10.5"	42	30	Full Float	Press			RH	AXG26011162
73 - 91 C/K30 Truck, Van, Suburban Full Float	14B 10.5"	31.68	30	Full Float	Press			LH	AXG3977383
73 - 91 C/K30 Truck, Van, Suburban Full Float	14B 10.5"	37.56	30	Full Float	Press			RH	AXG3977384
01 & Up C/K 2500,3500 w/ Allison AT, SRW	14B 11.5"	35.6	30	Full Float	Press			LH	AXG12471486
01& Up C/K 2500,3500 w/ Allison AT, SRW	14B 11.5"	39.72	30	Full Float	Press			RH	AXG12471487

GM Car Axles

Application	Model	Length	Spline	Bolt Circle	Stud Hole	Brake Pilot	Bearing Surface	Side	Part Number
CHEVROLET CAR									
65 - 67 Nova	10 Bolt	28.62	28	5x4.75"	P/S	2.775	1.400	LH & RH	AXG3863726
66 - 69 GTO / Firebird	10 Bolt	30.00	28	5x4.75"	P/S	2.775	1.400	LH & RH	AXG8.2
65 - 67 Chevelle / 67 - 69 Camaro / 70 - 75 Nova	10 Bolt	29.5	28	5x4.75"	P/S	2.775	1.400	LH & RH	AXG1255803-SH
68 - 72 Chevelle & El Camino / 70 - 81 Camaro	10 Bolt	30.25	28	5x4.75"	P/S	2.775v	1.400	LH & RH	AXG1255802-SH
68 - 72 Chevelle & El Camino / 70 - 81 Camaro 30 SP	10 Bolt	30.25	30	5x4.75"	P/S	2.775	1.400	LH & RH	AXG1255802-30
73 - 77 Chevelle & El Camino	10 Bolt	30.43	28	5x4.75"	P/S	2.775	1.400	LH & RH	AXG1255801-SH
78 - 88 Malibu, El Camino & Monte Carlo 7.5"	10 Bolt	28.50	26	5x4.75"	Press	2.775	1.400	LH & RH	AXG551818
78 - 88 Chevelle, A&G Bodies & Regal 8.5"	10 Bolt	28.50	28	5x4.75"	P/S	2.775	1.400	LH & RH	AXG551818-28
90 - 92 Camaro & Firebird	10 Bolt	30.37	28	5x4.75"	Press	2.780	1.400	LH & RH	AXG26034018
93 - 97 Camaro & Firebird	10 Bolt	32.00	28	5x4.75"	Press	2.780	1.400	LH & RH	AXG26063146
98 - 02 Camaro & Firebird	10 Bolt	32.00	28	5x4.75"	P/S	2.780	1.400	LH & RH	AXG26059972
64 - 67 Nova	12 Bolt	28.62	30	5x4.75"	P/S	2.775	1.400	LH & RH	AXG3868992
68 - 72 Chevelle & El Camino / 70 - 72 Camaro	12 Bolt	30.06	30	5x4.75"	P/S	2.775	1.400	LH & RH	AXG3969285
64 - 67 Chevelle / 67 - 69 Camaro / Fullsize Passenger car	12 Bolt	29.56	30	5x4.75"	P/S	2.775	1.400	LH & RH	AXG12398538
77 - 90 Olds Wagon Custom Cruiser	10 Bolt	30.375	28	5x4.75"	P/S	2.775	1.400	LH & RH	AXG1255804
80's Buick Park Ave, Olds 98, Fleetwood	10 Bolt	32	28	5x4.75"	Press	2.775		LH & RH	AXG15522066
80's Buick Park Ave, Olds 98, Fleetwood	10 Bolt	30.5	26	5x5"	Press	3.060	1.400	LH & RH	AXG22504959
80 - 92 Impala & Caprice w/ drum	10 Bolt	30.5	26	5x4.75"	Press	2.775	1.400	LH & RH	AXG22506477
77 - 80 Fleetwood, Deville 82 - 83 Brougham	10 Bolt	30.37	28	5x5"	Press	3.060	1.400	LH & RH	AXG25501599
91 - 96 Caprice & Impala	10 Bolt	30.37	30	5x5"	Press	3.060	1.400	LH & RH	AXG26018080
93 - 95 Fleetwood w/ ABS	10 Bolt	30.5	30	5x5"	Press	3.060	1.400	LH & RH	AXG26028502
94 - 96 Caprice & Impala	10 Bolt	31.06	30	5x5"	Press	3.060	1.400	LH & RH	AXG26043164
58 - 64 Passenger Car	55p D/O	28.56	17	5x4.75"	Press	2.775	1.378	LH	AXG3929165-L
58 - 64 Passenger Car	55p D/O	30	17	5x4.75"	Press	2.775	1.378	RH	AXG3929165-R
55 - 56 Passenger Car	55p D/O	28.75	17	5x4.75"	Press	2.775	1.378	LH	AXG3929165-L
58 - 64 Passenger Car	55p D/O	30.18	17	5x4.75"	Press	2.775	1.378	RH	AXG3929165-R
65 - 70 Impala	12 Bolt	31.375	30	5x4.75"	Press	2.775	1.620	LH & RH	AXG3985720
64 - 66 Firebird GTO F85 & More(Bolt-in)	10 Bolt	29.125	28	5x4.75"	Press	2.775	1.378	LH & RH	AXG8.2BOP-E
66 & Up Firebird GTO F85 & More(Bolt-in)	10 Bolt	29.75	28	5x4.75"	Press	2.775	1.378	LH & RH	AXG8.2BOP-L
73 - 75 El Camino, 73 - 79 BOP & More(Bolt-in)	10 Bolt	30	28	5x4.75"	Press	2.775	1.378	LH & RH	AXG1254369

Other Axles

Application	Model	Length	Spline	Bolt Circle	Stud Hole	Brake Pilot	Bearing Surface	Side	Part Number
INTERNATIONAL									
71 - 80 Scout	D44	28.25	30	5 on 5.5"	Press	3.005	1.375"	LH & RH	AXD706162-2X
ISUZU									
90 - 96 Rodeo	10Bolt	28.06	28	6 on 5.5"	Press	3.800	1.400"	LH & RH	AXIRODEO
CHRYSLER / DODGE									
87 - 90 Dakota	7.25"	30.25	25	5 on 4.5"	Press	2.83	1.62	LH & RH	AXC4348511
91 - 96 Dakota	7.25"	30.25	25	6 on 4.5"	Press	2.83	1.62	LH & RH	AXC4506147
87 - 90 Dakota	8.25"	30.75	27	5 on 4.5"	Press	2.83	1.62	LH & RH	AXC4348510
91 - 96 Dakota	8.25"	30.75	27	6 on 4.5"	Press	2.83	1.62	LH & RH	AXC4506115
85 - 96 Van 150, 250, 1500 & 2500	8.25"	32.56	27	5 on 5.5"	Press	3.56	1.62	LH & RH	AXC4506115
To 78 Passenger Car. 74 - 79 4WD Truck 100, 150 & Ram Charger, 75 - 83 2WD Truck 100, 150 & Ram Charger.	9.25"	31.65	31	5 on 4.5"	Press	2.83	1.62	LH & RH	AXC3723824
80 - 4/2/84 Truck 100, 150, Ram Charger	9.25"	31.62	31	5 on 5.5"	Press	3.56	1.62	LH & RH	AXC4037726
4/3/84 - 93 Truck 100, 150, Ram Charger	9.25"	31.62	31	5 on 5.5"	Press	3.56	1.62	LH & RH	AXC4137429
94 - 00 Dodge 1/2 Ton	9.25"	34.00	31	5 on 5.5"	Press	3.09	1.62	LH & RH	AXC52067614
92 - 02 Dodge Van	9.25"	32.56	31	5 on 5.5"	Press	3.547	2.62	LH & RH	AXC52067708AB
CHRYSLER 8.75 PASSENGER CAR									
UNIVERSAL CUSTOM	9" / 8.75"	24" - 34"	35	6x5.5	SCREW	2.83	1.565	LH/RH	AXF9-35-6CTL
UNIVERSAL CUSTOM	9" / 8.75"	22" - 31.8"	35	5x4.5/5/5.5	TRIPLE	2.83	1.565	LH/RH	AXF9-35-CTL
8.75 CTL	8.75	24.5" - 34"	30	5x4.5/5/5.5	TRIPLE	2.83	1.565	LH/RH	AXC8.75-34.0
8.75 CTL	8.75	24" - 28"	30			2.83	1.565	LH/RH	AXC8.75-CTL
8.75 CTL	8.75	27.5" - 31.5"	30	5X4.5		2.83	1.565	LH/RH	AXC8.75-31.5
8.75 CTL	8.75	27" - 30-9/16"	35	5X4.5		2.83	1.565	LH/RH	AXC8.75-35SPL



RING & PINIONS

AMC 20 Ring & Pinion

Application	Model	Ring Gear Dia.	Ring Gear Bolts	Ring Bolt Threads	Carrier Breaks	Pinion Shaft Dia.	Pinion Splines	Cover Bolts	Ratios	Part Number
AMC MODEL 20										
	20	8.75"	8 - 7/16"x20	RH Threads	2.76/3.07	1.625	28	12	2.73	M20-273-OE
									3.31	M20-331-NG
									3.54	M20-354-NG
									3.73	M20-373-NG
									4.10	M20-411-NG
									4.56	M20-456-NG
									4.88	M20-488-NG
									Installation Kit	IKM20
									Master Kit	MKM20
									Case	M20CASE-3
									Internal Kit	IPKM20-S-29



Chrysler Ring & Pinion

Model	Ring Gear Dia.	Ring Gear Bolts	Ring Bolt Threads	Carrier Breaks	Pinion Shaft Dia.	Pinion Splines	Cover Bolts	Ratios	Part Number
7.25									
7.25	7.25"	8 - 3/8" x 24	LH Threads	2.47/2.76	1.375	27	10	3.55	C7.25-355-NG
								3.90	C7.25-390-NG
								4.10	C7.25-410-NG
								Installation Kit	n/a
								Master Kit	MKC7.25
								Case	n/a
Internal Kit	IPKC7.25-S-25								
8.0									
8.0	8.0"	10 - 3/8" x 24	LH Threads	None	1.406	27	10	3.91	C8.0-391-NG
								4.10	C8.0-410-NG
								4.56	C8.0-456-NG
								Installation Kit	IK C8.0-IFS
								Master Kit 00 - 03	MK C8.0-IFS-A
								Master Kit 03 & Up	MK C8.0-IFS-B
Case - Empty	GM 12479021								
Case - Loaded	GM 40004373								
Internal Kit	IPKC8.0-S-29								
8.25									
8.25	8.375"	10 - 3/8" x 24	LH Threads	2.45/2.56	1.626	27	10	3.07	C8.25-307-OE
								3.21	C8.25-321-NG
								3.55	C8.25-355-NG
								3.73	C8.25-373-OE
								3.73	C8.25-373-NG
								3.90	C8.25-390-NG
								4.10	C8.25-411-NG
								4.56	C8.25-456-NG
								4.88	C8.25-488-NG
								Installation Kit	IKC8.25
								Master Kit	MKC8.25-A
									MKC8.25-B
								Bearing Kit	BKC8.25-B
								Pinion Kit	n/a
Case	CHY4384220								
Internal Kit	IPKC8.25-S-27								
	IPKC8.25-S-29								
9.25 REAR									
9.25 *Double-drilled for use with 11-Up carrier	9.25"	12 - 7/16" x 20	LH Threads	None	1.875	29	12	3.21	C9.25-321-NG
								3.55	C9.25-355-NG*
								3.92	C9.25-392-NG*
								4.10	C9.25-411-NG*
								4.56	C9.25-456-NG*
								4.88	C9.25-488-NG
								Installation Kit	IKC9.25
								Master Kit	MKC9.25
								Bearing Kit	BKC9.25
								Pinion Kit	PKC9.25
Case	CHY4384222								
Internal Kit	IPKC9.25-S-31								
Solid Spacer Preload	SKCSGM8.5								
AAM 11.5									
11.5	11.50"	12 - 14mm x 1.50	RH Threads	None	2.06"	30	14	3.42	AAM11.5-342-NG
								3.73	AAM11.5-373-NG
								4.10	AAM11.5-410-NG
								4.30	AAM11.5-430-NG
								4.44	AAM11.5-444-NG
								4.56	AAM11.5-456-NG
								4.88	AAM11.5-488-NG
								5.13	AAM11.5-513-NG
								Installation Kit	IKAAM11.5
								Master Kit	MKAAM11.5
								Bearing Kit	BKAAM11.5
								Case - Loaded	AAM40023075
Case - Standard	GM40000278								
Internal Kit	IPKGM11.5-S-30								

Chrysler 8.75 Ring & Pinion

Application	Model	Ring Gear Dia.	Ring Gear Bolts	Ring Bolt Threads	Carrier Breaks	Pinion Shaft Dia.	Cover Bolts	Pinion Splines	Ratios	Part Number
41 CASE										
Carrier casting numbers 1820657 (1957 - 1964) 2070741 (1964 - 1972)	8.75	8.75"	12 - 3/8" x 24	LH Threads	None	see below	none	10 or 29	3.55	C8.41-355-NG
									3.73	C8.41-373-NG
									Master Kit A All exc. Power Lock	MKC8.41-A
									Master Kit B W/ Power Lock	MKC8.41-B
									Carrier Kit - For Open/Non-Power-Lok	CK-C8.75-A
									Carrier Kit - For Power-Lok	CK-C8.75-B
Drop Out Case - Used	USED0C8.41									
42 CASE										
Carrier casting numbers 1634985 (1957 - 1964) 2070742 (1961 - 1969)	8.75	8.75"	12 - 3/8" x 24	LH Threads	None	1.375"	none	10 or 29	3.23	C8.42-323-NG
									3.55	C8.42-355-NG
									3.73	C8.42-373-NG
									3.9	C8.42-390-NG
									4.1	C8.42-410-NG
									4.3	C8.42-430-NG
Carrier casting numbers 1634985 (1957 - 1964) 2070742 (1961 - 1969)	8.75	8.75"	12 - 3/8" x 24	LH Threads	None	1.750"	none	10 or 29	4.57	C8.42-457-NG
									4.86	C8.42-486-NG
									5.13	C8.42-513-NG
									Master Kit A All exc. Power Lock	MKC8.42-A
									Master Kit B W/ Power Lock	MKC8.42-B
									Bearing Kit	BKC8.42-A
									Pinion Kit	PKC8.42
									Carrier Kit - For Open/Non-Power-Lok	CK-C8.75-A
									Carrier Kit - For Power-Lok	CK-C8.75-B
									Drop-Out Case - New w/ Adjuster Locks	NPDOC8.42
Drop Out Case - Used	USED0C8.42									
89 CASE										
Carrier casting numbers 2881488 (1969 - 1974) 2881489 (1969 - 1974)	8.75	8.75"	12 - 3/8" x 24	LH Threads	None	1.875"	none	10 or 29	3.23C	C8.89-323C-NG
									3.23F	C8.89-323F-NG
									3.55	C8.89-355-NG
									3.73	C8.89-373-NG
									3.9	C8.89-390-NG
									4.1	C8.89-410-NG
									4.3	C8.89-430-NG
									4.56	C8.89-456-NG
									4.86	C8.89-486-NG
									5.13	C8.89-513-RG
									Installation Kit	IKC8.89
									Master Kit A	MKC8.89-A
									Master Kit B	MKC8.89-B
									Bearing Kit	BKC8.89-A
Drop Out Case - New	JTPHC8.89-DO									
Drop Out Case - Used	USED0C8.89									
Carrier Case	n/a									
Internal Kit	n/a									
Chrysler 8.0 [Mercedes Benz] Ring & Pinion										
Application	Model	Ring Gear Dia.	Ring Gear Bolts	Ring Bolt Threads	Carrier Breaks	Pinion Shaft Dia.	Pinion Splines	Cover Bolts	Ratios	Part Number
CHRYSLER MERCEDES 8.0"										
05-10 Jeep WK IFS	8.0								4.10	M8.0-410-NG
									Bearing Kit	BKM8.0

Dana 30 Ring & Pinion

Application	Model	Ring Gear Dia.	Ring Gear Bolts	Ring Bolt Threads	Carrier Breaks	Pinion Shaft Dia.	Pinion Splines	Cover Bolts	Ratios	Part Number
DANA 30 (STANDARD)										
Scout, Bronco (IK,PK or MKD30-F) Volvo Rear (MKD30-R) 74 - 86 CJ5, CJ 7, CJ8 (IK,PK or MKD30-F) 92 - 96 ZJ (PK& MKD30-CS) All Use same Carrier Bearings (CK-D30) Notes: Use standard rotation gear set with MKD30-XX Overhaul Kit When installing 3.54/3.73 gear on 1993-1996 Grand Cherokee you must use: MKD30-CS Overhaul Kit	D30	7.2"	10 - 3/8" x 24	RH	3.54/3.73	1.375	26	10	3.54	D30-354-NG
									3.73	D30-373-NG
									4.10	D30-411-NG
									4.56	D30-456-NG
									4.88	D30-488-NG
									Installation Kit	IKD30-F
									Master Kit - ZJ	MKD30-CS
									Master Kit - Scout, Bronco, CJ	MKD30-F
									Master Kit	MKD30-R
									Bearing Kit	BKD30-F
									Pinion Kit - ZJ	PKD30-CS
									Pinion Kit - Scout, Bronco, CJ	PKD30-F
									Carrier Bearing Kit	CK-D30
									Case 3.54 & Down	DAN706007X
Case 3.73 & Up	DAN706008X									
Internal Kit	IPKD30-S-27									
REVERSE DANA 30 (HIGH PINION)										
XJ, YJ	D30	7.2"	10 - 3/8" x 24	RH	3.54/3.73	1.375"	26	10	3.54	D30R-354R-NG
									3.73	D30R-373R-NG
									4.10	D30R-411R-NG
									4.56	D30R-456R-NG
									4.88	D30R-488R-NG
									Installation Kit	IKD30-F
									Master Kit	MKD30-F
									Bearing Kit	BKD30-F
									Pinion Kit	PKD30-F
									Carrier Bearing Kit	CK-D30
									Case 3.54 & Down	DAN706007X
									Case 3.73 & Up	DAN706008X
									Internal Kit	IPKD30-S-27
									DANA 30 SHORT (CRUSH SLEEVE TYPE)	
96.5 & Up ZJ, TJ, WJ, 01 XJ	D30	7.2"	10 - 3/8" x 24	RH	3.54/3.73	1.375"	26	10	3.08	D30S-308TJ-NG
									3.55	D30S-355TJ-NG
									3.73	D30S-373TJ-NG
									4.11	D30S-411TJ-NG
									4.56	D30S-456TJ-NG
									4.88	D30S-488TJ-NG
									Installation Kit	IKD30-TJ
									Master Kit	MKD30-TJ
									Bearing Kit	BKD30-TJ
									Pinion Kit	PKD30-TJ
									Carrier Bearing Kit	CK-D30
									Case 3.54 & Down	DAN706007X
									Case 3.73 & Up	DAN706008X
									Internal Kit	IPKD30-S-27
DANA 30JK (REVERSE HIGH PINION)										
Wrangler JK Only	D30	7.2"	10 - 3/8" x 24	RH	3.54/3.73	1.62"	24	10	3.21	D30JK-321-NG
									3.73	D30JK-373-NG
									4.11	D30JK-411-NG
									4.56	D30JK-456-NG
									4.88	D30JK-488-NG
									5.13	D30JK-513-NG
									Installation Kit	IKD30-JK
									Master Kit	MKD30-JK
									Bearing Kit	BKD30-JK
									Pinion Kit	PKD30-JK
									Carrier Bearing Kit	CK-D30
									Case	DAN706008X
									Internal Kit	IPKD30JK-S-27
									DANA 30 KJ (REVERSE HIGH PINION)	
KJ Liberty	D30	7.2"	10 - 3/8" x 24	RH	3.54/3.73	1.62"		10	3.73	D30KJ-373LIB-NG
									4.10	D30KJ-410LIB-NG
									Master Kit - Liberty	MKD30-KJ
									Master Kit - Ford Explorer	MKD30-IFS
									Carrier Bearing Kit	CK-D30

Dana Model 35 Ring & Pinion

Application	Model	Ring Gear Dia.	Ring Gear Bolts*	Ring Bolt Threads	Carrier Breaks	Pinion Shaft Dia.	Pinion Splines	Cover Bolts	Ratios	Part Number
MODEL 35 STD. ROTATION										
	D35	7.562"	8 - 3/8" x 24	RH	3.31/3.55	1.406"	26	10	3.08	M35-308-NG
									3.27	M35-327-NG
									3.55	M35-355-NG
									3.73	M35-373-NG
									4.11	M35-411-NG
									4.56	M35-456-NG
									4.88	M35-488-NG
									Installation Kit	IKM35
									Master Kit	MKM35
									Master Kit - 30	MKM35-30
									Spline overhaul kit	
									Bearing Kit	BKM35
									Pinion Kit	PKM35
									Carrier Bearing Kit	CK-M35
									Case 3.31 & Down	DAN75053X
									Case 3.55 & Up	DAN43218
									Case 93 - Present with ABS 3.31 & Down	DAN44590
									Case 93 - Present with ABS 3.55 & Up	DAN43233
									Internal Kit	IPKM35-S-27-1.5
Internal Kit	IPKM35-S-27-1.6									
MODEL 35 REV. ROTATION										
	D35IFS	7.562"	8 - 3/8" x 24	RH	3.54/3.73	1.406"	26	10	4.10	M35R-410R-NG
									4.56	M35R-456R-NG
									4.88	M35R-488R-NG
									5.13	M35R-513R-NG
									Installation Kit	IKM35-IFS
									Master Kit	MKM35-IFS
									Bearing Kit	BKM35
									Carrier Bearing Kit	CK-M35
									Case (IFS Loaded case)	DAN707378X
									Internal Kit	n/a

Notes: Ford Front Applications are Reverse Rotation, case change 3.31 & Down as well as 3.55 & up
* Some are double drilled



Dana 44 Ring & Pinion

Application	Model	Ring Gear Dia.	Ring Gear Bolts	Ring Bolt Threads	Carrier Breaks	Pinion Shaft Dia.	Pinion Splines	Cover Bolts	Ratios	Part Number
MODEL 44 STD. ROTATION										
	D44	8.5"	(10) 3/8"-24TPI	RH	3.73/3.92	1.375"	26	10	3.08	D44-308-NG
									3.31	D44-331-NG
									3.54	D44-354-NG
									3.73	D44-373-NG
									3.92	D44-392-NG
									4.11	D44-411-NG
									4.27	D44-427-NG
									4.56	D44-456-NG
									4.88	D44-488-NG
									5.13	D44-513-NG
									5.38	D44-538-NG
									5.89	D44-589-NG
Thick Gears										
Thick	D44	8.5"	(10) 3/8"-24TPI	RH	3.73 & Down	1.375"	26	10	4.11	D44-411T-NG
Thick	D44	8.5"	(10) 3/8"-24TPI	RH	3.73 & Down	1.375"	26	10	4.56	D44-456T-NG
Thick	D44	8.5"	(10) 3/8"-24TPI	RH	3.73 & Down	1.375"	26	10	4.88	D44-488T-NG
Thick	D44	8.5"	(10) 3/8"-24TPI	RH	3.73 & Down	1.375"	26	10	5.13	D44-513T-NG
Thick (Big Pinion Kit)	D44	8.5"	(10) 3/8"-24TPI	RH	3.73 & Down	1.375"	26	10	3.73	D44-373BP-T-NG*
Thick (Big Pinion Kit)	D44	8.5"	(10) 3/8"-24TPI	RH	3.73 & Down	1.375"	26	10	4.56	D44-456BP-T-NG*
Thick (Big Pinion Kit)	D44	8.5"	(10) 3/8"-24TPI	RH	3.73 & Down	1.375"	26	10	5.38	D44-538BP-T-NG*
										Installation Kit IKD44
										Master Kit Front D44 MKD44
										Master Kit Rear D44 MKD44-REAR
										Master Kit - 73- Jeep, 69 - Ford D44 MKD44-19
										Master Kit - Dodge with disconnect D44 MKD44-DIS
										Master Kit-Titan MKM226
										Master Kit-TJ Front MKD44TJ-RUB-F
										Master Kit-TJ Rear MKD44TJ-RUB-R
										Master Kit-80-82 Corvette MKD44-VET
										Master Kit - 92 Down-Ford TTB MKD44-IFS-E
										Master Kit - 93 Up-Ford TTB MKD44-IFS-L
										Pinion Kit D44 PKD44
										Carrier Bearing Kit D44 CK-D44
										Case 3.73 & Down D44 DAN706024X
										Case 3.92 & Upt D44 DAN706025X
										Internal Kit D44 IPKD44-S-19
										Internal Kit D44 IPKD44-S-30

*Big Pinion Kits Inc R&P,PK and Yoke 1310 or 1350



Dana 44HD (D44-A) Ring & Pinion

Application	Model	Ring Gear Dia.	Ring Gear Bolts	Ring Bolt Threads	Carrier Breaks	Pinion Shaft Dia.	Pinion Splines	Cover Bolts	Ratios	Part Number
MODEL 44HD STD. ROTATION										
D44A Grand Cherokee, Viper, Corvette	D44	8.5"	10-7/16" x 20	RH	3.73/3.92	1.628"	29	10	3.08	D44HD-308-NG
									3.54	D44HD-354-NG
									3.73	D44HD-373-NG
									3.90	D44HD-390-NG
									4.11	D44HD-411-NG
									4.56	D44HD-456-NG
									4.88	D44HD-488-NG
										Installation Kit IKD44HD
										Master Kit-G. Cherokee ZJ MKD44HD
										Master Kit-G. Cherokee WJ MKD44HD-WJ
										Master Kit-Corvette & Viper MKD44HD-VET
										Pinion Kit PKD44HD
										Carrier Bearing Kit CK-D44HD
										Case 3.73 & Down DAN706024X
										Case 3.92 & Up DAN706025X
										Internal kit IPKD44HD-S-30
										Solid Preload Spacer SKCSD44HD

Dana 44 Reverse Ring & Pinion

Application	Model	Ring Gear Dia.	Ring Gear Bolts	Ring Bolt Threads	Carrier Breaks	Pinion Shaft Dia.	Pinion Splines	Cover Bolts	Ratios	Part Number
MODEL 44 REV. ROTATION										
Ford Front Axles	D44	8.5"	10 3/8" x 24	RH	3.73/3.92	1.375"	26	10	3.07	D44R-307R-NG
									3.54	D44R-354R-NG
									3.73	D44R-373R-NG
									4.11	D44R-411R-NG
									4.56	D44R-456R-NG
									4.88	D44R-488R-NG
									5.13	D44R-513R-NG
									5.38	D44R-538R-NG
										Installation Kit IKD44
										Master Kit MKD44-REV
										Carrier Bearing Kit CK-D44
										Case 3.73 & Down DAN706024X
										Case 3.92 & Up DAN706025X
										Internal Kit IPKD44-S-19
										Internal Kit IPKD44-S-30



Dana 44JK Ring & Pinion

Application	Model	Ring Gear Dia.	Ring Gear Bolts	Ring Bolt Threads	Carrier Breaks	Pinion Shaft Dia.	Pinion Splines	Cover Bolts	Ratios	Part Number
44 STD. ROTATION JK WRANGLER AND RUBICON*										
	D44	8.5"	10-7/16" x 20	RH	3.73	1.628	24	10	4.11	D44JK-411-NG
								10	4.56	D44JK-456-NG
								10	4.88	D44JK-488-NG
								10	5.13	D44JK-513-NG
								10	5.38	D44JK-538-NG
RUBICON										
Installation Kit (Rear)										IKD44JK
Master Kit Rubicon Only (Rear)										MKD44JK-RUB-R
Pinion Kit (Rear)										PKD44JK-REAR
Carrier Bearing Kit										CK-D44
NON RUBICON										
Case All JK Ratios										DAN706024X*
Internal Kit										IPKD44-S-30*
Master Kit Non Rubicon										MKD44JK-REAR
44 REV. ROTATION JK WRANGLER RUBICON ONLY										
	D44	8.5"	10-7/16" x 20	RH	3.73	1.628	24	10	4.11	D44RS-411-NG
								10	4.56	D44RS-456-NG
								10	4.88	D44RS-488-NG
								10	5.13	D44RS-513-NG
								10	5.38	D44RS-538-NG
Rubicon										
Installation Kit (Front)										IKD44JK-RUB-F
Master Kit (Front)										MKD44JK-RUB-F
Pinion Kit (Front)										PKD44JK-REV
Carrier Bearing Kit										CK-D44JK-RUB
Non Rubicon										
Case All JK Ratios										DAN706024X*
Internal Kit										IPKD44-S-30*

*Gears designed to work with factory lockers
*Cases and Internal Kits are for JK Non-Rubicon Only

*Cases and Internal Kits are for JK Non-Rubicon Only



Dana 50 Reverse & Dana 60

Application	Model	Ring Gear Dia.	Ring Gear Bolts	Ring Bolt Threads	Carrier Breaks	Pinion Shaft Dia.	Pinion Splines	Cover Bolts	Ratios	Part Number								
MODEL 50 REV. ROTATION																		
	D50	9"	10-7/16" x 20	RH	None	1.375"	26	10	3.73	D50R-373R-NG								
								10	4.11	D50R-411R-NG								
								10	4.30	D50R-430R-NG								
								10	4.56	D50R-456R-NG								
								10	4.88	D50R-488R-NG								
								10	5.13	D50R-513R-NG								
								10	5.38	D50R-538R-NG								
								Installation Kit										IKD50R
								Master Kit IFS										MKD50-IFS
								Master Kit Straight Axle										MKD50-SOLID
Case										N/A								
Internal Kit										IPKD50-S-30								
MODEL 60 STD. ROTATION*																		
	D60	9.75"	12-1/2" x 20	RH	4.10/4.56	1.626"	29	10	3.54	D60-354-NG								
									3.73	D60-373-NG								
									4.11	D60-411-NG								
									4.56	D60-456-NG								
									4.88	D60-488-NG								
									5.13	D60-513-NG								
									5.38	D60-538-NG								
									5.86	D60-586-NG								
									6.17	D60-617-NG								
									7.17	D60-717-NG								
MODEL 60 REV. ROTATION*																		
	Thick	9.75"	12-1/2" x 20	RH	4.10 & Down	1.626"	29	10	4.30	D60-430-NG								
									4.56	D60-456T-NG								
									4.88	D60-488T-NG								
									5.13	D60-513T-NG								
									5.38	D60-538T-NG								
								Installation Kit										IKD60
								Master Kit										MKD60
								Bearing Kit										BKD60
								Pinion Kit										PKD60
								Carrier Bearing Kit										CK-D60
Case Non ABS 4.10 & Down										DAN706040X								
Case Non ABS 4.56 & Up										DAN706041X								
Case with ABS 4.10 & Down										DAN707212X								
Internal Kit 30 Spl										IPKD60-S-30								
Internal Kit 32 Spl										IPKD60-S-32								
Internal Kit 35 Spl										IPKD60-S-35								
MODEL 60 REV. ROTATION*																		
	D60	9.75"	12-1/2" x 20	RH	4.10/4.56	1.626"	29	10	3.54	D60R-354R-NG								
									3.73	D60R-373R-NG								
									4.10	D60R-411R-NG								
								Thin	4.88	D60R-488R-NG								
									5.38	D60R-538R-NG								
								Thick	D60	9.75"	12-1/2" x 20	RH	4.10 & down	1.626"	29	10	4.30	D60R-430R-T-NG
																	4.56	D60R-456R-T-NG
																	4.88	D60R-488R-T-NG
																	5.13	D60R-513R-T-NG
																	5.38	D60R-538R-T-NG
Installation Kit										IKD60								
Master Kit										MKD60-F								
Bearing Kit										BKD60								
Pinion Kit										PKD60								
Carrier Bearing Kit										CK-D60								
Case 4.10 & Down										DAN706040X								
Case 4.56 & Up										DAN706041X								
Internal Kit - 30 Spline										IPKD60-S-30								
Internal Kit - 32 Spline										IPKD60-S-32								
Internal Kit - 35 Spline										IPKD60-S-35								

*Check the B.O.M. number before ordering parts

*Check the B.O.M. number before ordering parts

*Check the B.O.M. number before ordering parts

Dana 70, 80 Ring & Pinion

Application	Model	Ring Gear Dia.	Ring Gear Bolts	Ring Bolt Threads	Carrier Breaks	Pinion Shaft Dia.	Pinion Splines	Cover Bolts	Ratios	Part Number
MODEL 70 STD ROTATION										
	D70	10.5"	12-1/2"-20	RH	4.10/4.56	1.75"	29	10	3.54 3.73 4.11 4.56 4.88 5.13 5.86 6.17 7.17	D70-354-NG D70-373-NG D70-411-NG D70-456-NG D70-488-NG D70-513-NG D70-586-NG D70-617-NG D70-717-NG
Thick	D70	10.5"	12-1/2"-20	RH	4.10 & Down	1.75"	29	10	4.56	D70-456T-NG
										Installation Kit D70 IKD70 Installation Kit (Some Dodge) D70U IKD60 Master Kit D70 MKD70 Master Kit (Some GM) 70HD MKD70-HD Master Kit (Some Dodge) D70U MKD70-U Bearing Kit D70 BKD70 Pinion Kit D70 PKD70 Pinion Kit (Some Dodge) D70U PKD70-U Carrier Bearing Kit D70-70U CK-D60 Carrier Bearing Kit (Some GM) D70HD CK-D80 Case 4.56 & Up DAN706056X Case 4.10 & Down DAN706068X Internal Kit IPKD70-S-35
MODEL 80 STD. ROTATION										
	D80	11.25"	12-9/16"-18	RH	3.73/4.10	2.0"	37	10	3.31 3.54 3.73 4.11 4.30 4.63 4.88 5.13 5.38	D80-331-NG D80-354-NG D80-373-NG D80-411-NG D80-430-NG D80-463-NG D80-488-NG D80-513-NG D80-538-NG
Thin - fits 4-Series case	D80	11.25"	12-9/16"-18	RH	4.10 & Up	2.0"	37	10	3.73	D80-373-4-NG
Thick	D80	11.25"	12-9/16"-18	RH	4.10 & Up	2.0"	37	10	4.11	D80-411T-NG
										Installation Kit IKD80-A Installation Kit IKD80-B* Master Kit MKD80-A Master Kit B MKD80-B* Bearing Kit B BKD80-B* Pinion Kit PKD80-A Pinion Kit B PKD80-B* Carrier Bearing Kit CK-D80 Case - Non-ABS 4.10 & Up DAN707062 Case - ABS 3.73 & Down DAN708028 Case - ABS 4.10 & Up DAN708032 Internal Kit - 35 Spline IPKD80-S-35 Internal Kit - 37 Spline IPKD80-S-37

*IK/MK/PK D80-B are for 98+ Ford Pickups W/D80 (not van)

Ford 7.5, 8.0, 8.8 Ring & Pinion

Application	Model	Ring Gear Dia.	Ring Gear Bolts	Ring Bolt Threads	Carrier Breaks	Pinion Shaft Dia.	Pinion Splines	Cover Bolts	Ratios	Part Number
MODEL 7.5 STD. ROTATION										
	7.5	7.875"	10 - 7/16" x 20	RH	None	1.625"	28	10	3.08 3.27 3.45 3.73 4.10 4.56 5.13	F7.5-308-NG F7.5-327-NG F7.5-345-NG F7.5-373-NG* F7.5-410-NG* F7.5-456-NG* F7.5-513-NG*
										Installation Kit IKF7.5 Master Kit MKF7.5 Pinion Kit PKF8.8 Carrier Bearing Kit CK-F7.5 Case FORF750500 Internal Kit IPKF7.5-S-28
MODEL 8.0 STD. ROTATION										
	8.0	8"	10 - 7/16" x 20	RH	None	1.188	25		3.00 3.25 3.55 3.80 4.11 4.62	F8-300-NG F8-325-NG F8-355-NG F8-380-NG F8-411-NG F8-462-RG
										Installation Kit IKF8 Master Kit - W/O Posi MKF8 Master Kit - W/ Posi MKF8-B Case USED0F8 Internal Kit N/A
MODEL 8.8 IFS REV.										
	8.8	8.875"	10 - 7/16" x 20	RH	None	1.625	30	10	3.31 3.55 3.73 4.10 4.56 4.88 5.13	F8.8R-331R-NG F8.8R-355R-NG F8.8R-373R-NG F8.8R-411R-NG F8.8R-456R-NG F8.8R-488R-NG F8.8R-513R-NG
										Installation Kit IKF8.8 Installation Kit IKF9-HIPIN* Master Kit MKF8.8-REV Carrier Bearing Kit CK-F8.8 Case 28 Spl FORF880500 Case 31 Spl FORF880502 Internal Kit 28 Spl IPKF8.8-S-28 Internal Kit 31 Spl IPKF8.8-S-31
MODEL 8.8 STD. ROTATION										
	8.8	8.875"	10 - 7/16" x 20	RH	None	1.625	30	10	2.73 3.08 3.31 3.55 3.73 3.90 4.11 4.30 4.56 4.88 5.13 5.71 6.14	F8.8-273-OE F8.8-308-NG F8.8-331-NG F8.8-355-NG F8.8-373-NG F8.8-390-NG F8.8-411-NG F8.8-430-NG* F8.8-456-NG* F8.8-488-NG* F8.8-513-NG* F8.8-571-NG* F8.8-614-NG*
										Installation Kit IKF8.8 Master Kit MK F8.8 IRS / SUV Master Kit MKF8.8-SUV Bearing Kit BKF8.8 Pinion Kit PKF8.8 Carrier Bearing Kit CK-F8.8 Case - 28 Spline FORF880500 Case - 31 Spline FORF880502 Internal Kit - 28 Spline IPKF8.8-S-28 Internal Kit - 31 Spline IPKF8.8-S-31

*Modified cross shaft or gear grinding required for 3.73 - 4.56 ratios

*Currie high pinion 8.8" reverse mini kit

*Requires Modified cross shaft or clearance grinding for 4.30 - Numerically higher gear

Ford 9" Ring & Pinion

Application	Model	Ring Gear Dia.	Ring Gear Bolts	Ring Bolt Threads	Carrier Breaks	Pinion Shaft Dia.	Pinion Splines	Cover Bolts	Ratios	Part Number
STREET GEARS										
	9"	9.0"	10 - 7/16" x 20	RH Threads	None	1.313	10	28	3.00	F9-300-NG
	9"	9.0"	10 - 7/16" x 20	RH Threads	None	1.313	10	28	3.25	F9-325-NG
	9"	9.0"	10 - 7/16" x 20	RH Threads	None	1.313	10	28	3.50	F9-350-NG
	9"	9.0"	10 - 7/16" x 20	RH Threads	None	1.313	10	28	3.70	F9-370-NG
	9"	9.0"	10 - 7/16" x 20	RH Threads	None	1.313	10	28	3.89	F9-389-NG
	9"	9.0"	10 - 7/16" x 20	RH Threads	None	1.313	10	28	4.11	F9-411-NG
	9"	9.0"	10 - 7/16" x 20	RH Threads	None	1.313	10	28	4.30	F9-430-NG
	9"	9.0"	10 - 7/16" x 20	RH Threads	None	1.313	10	28	4.56	F9-456-NG
	9"	9.0"	10 - 7/16" x 20	RH Threads	None	1.313	10	28	4.71	F9-471-NG
	9"	9.0"	10 - 7/16" x 20	RH Threads	None	1.313	10	28	4.86	F9-486-NG
	9"	9.0"	10 - 7/16" x 20	RH Threads	None	1.313	10	28	5.00	F9-500-NG
	9"	9.0"	10 - 7/16" x 20	RH Threads	None	1.313	10	28	5.14	F9-514-NG
	9"	9.0"	10 - 7/16" x 20	RH Threads	None	1.313	10	28	5.29	F9-529-NG
	9"	9.0"	10 - 7/16" x 20	RH Threads	None	1.313	10	28	5.43	F9-543-NG
	9"	9.0"	10 - 7/16" x 20	RH Threads	None	1.313	10	28	5.50	F9-550LW-NG
	9"	9.0"	10 - 7/16" x 20	RH Threads	None	1.313	10	28	5.67	F9-567-NG
	9"	9.0"	10 - 7/16" x 20	RH Threads	None	1.313	10	28	5.83	F9-583-NG
	9"	9.0"	10 - 7/16" x 20	RH Threads	None	1.313	10	28	6.00	F9-600-NG
	9"	9.0"	10 - 7/16" x 20	RH Threads	None	1.313	10	28	6.20	F9-620-NG
	9"	9.0"	10 - 7/16" x 20	RH Threads	None	1.313	10	28	6.33	F9-633-NG
	9"	9.0"	10 - 7/16" x 20	RH Threads	None	1.313	10	28	6.50	F9-650-NG
	9"	9.0"	10 - 7/16" x 20	RH Threads	None	1.313	10	28	6.66	F9-666LW-NG
	9"	9.0"	10 - 7/16" x 20	RH Threads	None	1.313	10	28	6.83	F9-683LW-NG
	9"	9.0"	10 - 7/16" x 20	RH Threads	None	1.313	10	28	7.00	F9-700LW-NG
	9"	9.0"	10 - 7/16" x 20	RH Threads	None	1.313	10	28	7.33	F9-733LW-NG
PRO GEARS										
Small Pinion = 28 Spline	9"	9.0"	10 - 7/16" x 20	RH Threads	None	1.878	10	28	4.29	F9-429SP-NG
	9"	9.0"	10 - 7/16" x 20	RH Threads	None	1.878	10	28	4.56	F9-457SP-NG
	9"	9.0"	10 - 7/16" x 20	RH Threads	None	1.878	10	28	4.86	F9-486SP-NG
Large Pinion = 35 Spline	9"	9.0"	10 - 7/16" x 20	RH Threads	None	1.878	10	35	3.89	F9-389BP-NG
	9"	9.0"	10 - 7/16" x 20	RH Threads	None	1.878	10	35	4.29	F9-429BP-NG
	9"	9.0"	10 - 7/16" x 20	RH Threads	None	1.878	10	35	4.56	F9-457BP-NG
9310 Steel	9"	9.5"	10-7/16x20	RH Threads	None	1.878	10	35	5.14	F9.5-514-NG
9310 Steel	9"	10"	10-7/16x20	RH Threads	None	1.878	10	35	3.70	F10-370-NG
	9"	10"	10-7/16x20	RH Threads	None	1.878	10	35	3.89	F10-389-NG
	9"	10"	10-7/16x20	RH Threads	None	1.878	10	35	4.11	F10-411-NG
	9"	10"	10-7/16x20	RH Threads	None	1.878	10	35	4.29	F10-429-NG
	9"	10"	10-7/16x20	RH Threads	None	1.878	10	35	4.57	F10-457-NG
	9"	10"	10-7/16x20	RH Threads	None	1.878	10	35	4.71	F10-471-NG
	9"	10"	10-7/16x20	RH Threads	None	1.878	10	35	4.86	F10-486-NG
	9"	10"	10-7/16X20	RH Threads	None	1.878	10	35	5.00	F10-500-NG
	9"	10"	10-7/16X20	RH Threads	None	1.878	10	35	5.14	F10-514-NG
	9"	10"	10-7/16X20	RH Threads	None	1.878	10	35	5.29	F10-529-NG
	9"	10"	10-7/16X20	RH Threads	None	1.878	10	35	5.33	F10-533-NG
	9"	10"	10-7/16X20	RH Threads	None	1.878	10	35	5.37	F10-537-NG
	9"	10"	10-7/16X20	RH Threads	None	1.878	10	35	5.43	F10-543-NG
	9"	10"	10-7/16x20	RH Threads	None	1.878	10	35	6.00	F10-600-NG
	9"	10"	10-7/16x20	RH Threads	None	1.878	10	35	6.20	F10-620-NG
Application	Description				Carrier Bearings	Pinion Splines	Ratios	Part Number		
Installation Kit								IKF9		
Master Kit	Common - Fits most Aftermarket Spline Cases BRG#LM102910					28 & 31		MKF9-A		
Master Kit	Daytona pinion bearings				2.89"			MKF9A-DAY		
Master Kit	Fits stock only 28 Spline BRG#LM501310					28		MKF9B		
Master Kit	With BRG#LM603011				3.06"			MKF9C		
Master Kit	Daytona pinion bearings - Includes Solid Spacer				3.25"			MKF9C-DAY		
Master Kit	10" Billet Support - Includes Solid Spacer				3.25"	35		MKF9D-BILLET		
Master Kit	Daytona Support - Includes Solid Spacer				3.25"	35		MKF9D-DAY		
Master Kit	8.8" Reverse High Pinion 9" Dropout					35		MKF9D-REV		
Bearing Kit								BKF9-A		
Pinion Kit								PKF9		
Carrier Bearing Kit - 2.891" 28-31 Spline								CK-F9-2.891		
Carrier Bearing Kit - 3.062" 28-31 Spline								CK-F9-3.062		
Carrier Bearing Kit - 3.25" 35 Spline								CK-F9-3.25		
Internal Kit - 28 Spline										
Internal Kit - 31 Spline								IPKF9-S-31-4		

Ford 9", 10" High-Performance

Application	Model	Detail	Pinion Splines	Part Number
FULL SPOOLS				
SPOOL	9"		28	FSF9-28
SPOOL	9"	Lightweight	28	FSF9-28-LW
SPOOL	9"		31	FSF9-31
SPOOL	9"	Lightweight	31	FSF9-31-LW
SPOOL	9"		33	FSF9-33
SPOOL	9"	Lightweight	35	FSF9-35-LW
SPOOL - Fits stock housing.	9"		35	FSF9-35SMALL
	9"	Lightweight	40	FSF9-40-LW
MINI SPOOLS				
Mini Spool - 28 Spline				MSF9-28
Mini Spool - 31 Spline				MSF9-31
KITS				
Pinion Kit - Big Pinion bearing kit w/races			35	PKF9-ROD
Pinion Kit - 3.062" Nodular Iron				NPDOF9-1-306
Pinion Kit - 3.250" Nodular Iron			35+	NPDOF9-2-325
Pinion Kit - 3.062" Aluminum Case				NPDOF9-3-306
Pinion Kit - 3.25" Aluminum Case				NPDOF9-3-325
Pinion Kit - 3.25" Billet Aluminum Case				NPDOF9-BILLET
Carrier Bearing Kit - 3.062"				CK-F9-3.062
Carrier Bearing Kit - 3.25"				CK-F9-3.25
Carrier - 28 Spline				TLF9-28
Carrier - 31 Spline				TLF9-31
Internal Kit - 4 PINION POSI - 28 Spline (NO CLUTCHES)	8" & 9"			IPKF9-P-28-4
Internal Kit - 4 PINION POSI SPIDER GEAR KIT - 31 Spline (NO CLUTCHES)	9"			IPKF9-P-31-4
Internal Kit - 5-TAB CLUTCHES (EARLY EQUA LOCK)	8" & 9"			IPKF9-PC-E
Internal Kit - 4 TAB CLUTCH KIT (9 PIECES) (LATE T/L)	8" & 9"			IPKF9-PC-L
Internal Kit - SHIM KIT T/L CLUTCH, (8" ALSO) POSITRACTION (2) .005 (4) .010	9"			IPKF9-PC-SHIMS
YOKES				
FORD 8" & 9" 1310 & 1330 U/BOLT KIT (2 U-BOLTS & 4 NUTS) ALSO 10.25" 1330	8" & 9"			YOKF9-1310-UBKIT
9" 1350 28 SPL CAST YOKE, STEEL 3-7/8" OA LENGTH	9"		28	YOKF9-1350-28C
9" 1350 28 SPL FORGED YOKE, 4140 STEEL 3-7/8" OA LENGTH	9"		28	YOKF9-1350-28F
9" 1350 35 SPL BILLET YOKE, 4140 STEEL..	9"		35	YOKF9-1350-35B
9" FORD YOKE SPACER TO USE DAYTONA YOKE W/ STOCK PINION SUPPORT	9"			YOKF9-SPACER
9" 1330 28 SPLINE YOKE, 4" LENGTH OVERALL 1-1/8" CAPS	9"		28	YOKF900600
9" 1310 28 SPL YOKE, 4" LENGTH, FOR USE WITH STOCK PIN SUPPORT	9"		28	YOKF900601
9" 1330 28 SPLINE YOKE, 5" LENGTH OVERALL 1-1/8" CAPS	9"		28	YOKF900602
9" 1330 28 SPL YOKE, 4" LENGTH, 1-1/8" CAPS, FOR DAYTONA SUPPORT	9"		28	YOKF900603
9" 1310 28 SPL YOKE, FORGED, 4" LENGTH	9"		28	YOKF900604
9" 1350 28 SPL YOKE, 4" LENGTH, FOR DAYTONA SUPPORT	9"		28	YOKF900605
9" 1310 28 SPL YOKE, FOR DAYTONA SUPPORT, 4" LENGTH, 4130 FORGED	9"		28	YOKF900631
9" 1350 35 SPL FORGED YOKE, STRONGER THAN BILLET	9"		35	YOKF900663
PINION SLEEVE, SPACER + SUPPORTS				
PINION SLEEVE (IN OVERSIZE SUPPORT)	9"		28	NPF9-SLEEVE
PINION SPACER/SHIM (IN OVERSIZE SUPPORT)	9"		28	NPF9-SPACER
PINION SUPPORT, HD 6061 ALUMINUM, DAYTONA	9"			NPF9PS-1-CLEAR
PINION SUPPORT, HD OVERSIZE 6061 ALUMINUM	9"		35	NPF9PS-2
PINION SUPPORT, HD NODULAR IRON, DAYTONA	9"			NPF9PS-3
PINION SUPPORT, HD BILLET /RETAINER	10"		35	NPF9PS-4
HIGH PERFORMANCE 9" + 10" DROPOUTS				
9"/10" HD 3.25 Billet Aluminum Dropout, With Adjusters and Locks, Pinion Support Separate	9"/10"			NPDOF9-BILLET
9" HD 3.062 Aluminum Dropout, With Adjusters and Locks, Pinion Support Separate	9"			NPDOF9-3-306
9" HD 3.25 Aluminum Dropout, With Adjusters and Locks, Pinion Support Separate	9"			NPDOF9-3-325
9" HD 3.062 Nodular Iron Dropout, With Adjusters and Locks, Pinion Support Separate	9"			NPDOF9-1-306
9" HD 3.25 Nodular Iron Dropout, With Adjusters and Locks, Pinion Support Separate	9"			NPDOF9-1-325



Ford 9.75, 10.25, 10.5 Ring & Pinion

Application	Model	Ring Gear Dia.	Ring Gear Bolts	Ring Bolt Threads	Carrier Breaks	Pinion Shaft Dia.	Pinion Splines	Cover Bolts	Ratios	Part Number	
MODEL 9.75 STD. ROTATION*											
*Gears are 99-Newer design 97-99 Requires spacer for crush sleeve	9.75	9.75"	12 - 12mm x1.25mm	RH	None	1.97"	31	12	3.08	F9.75-308-OE	
									3.31	F9.75-331-OE	
									3.55	F9.75-355-NG*	
									3.73	F9.75-373-NG*	
									4.10	F9.75-410-NG*	
									4.56	F9.75-456-NG*	
									4.88	F9.75-488-NG*	
									Installation Kit		IKF9.75
									Master Kit - 97-99		MKF9.75
									Master Kit - 00-10		MKF9.75-B
									Master Kit - 2011+ W/Nitro Gear		MKF9.75-C
									Pinion Kit - 97-99		PKF9.75-A
									Pinion Kit - 00-10		PKF9.75-B
									Pinion Kit - 2011+		PKF9.75-C
									Carrier Bearing Kit		CK-F9.75
Case		FORF975500									
Internal Kit		IPKF9.75-S-34									
MODEL 10.25 STD ROTATION											
92 and older short pinion	10.25	10.250"	12 - 1/2" x 20	RH	None	1.94"	31	12	3.55	F10.25-355S-NG	
									4.11	F10.25-411S-NG	
									4.56	F10.25-456S-NG	
93-98 Have long-style pinion	10.25	10.250"	12 - 1/2" x 20	RH	None	1.94"	31	12	3.31	F10.25-331L-OE	
									3.55	F10.25-355L-NG	
									3.73	F10.25-373L-NG	
									4.11	F10.25-411L-NG	
									4.30	F10.25-430L-NG	
									4.56	F10.25-456L-NG	
									4.88	F10.25-488L-NG	
									5.13	F10.25-513L-NG	
									5.38	F10.25-538L-NG	
Installation Kit		IKF10.25									
Master Kit		MKF10.25									
Carrier Bearing Kit		CK-F10.25									
Case		FORF100500									
Internal Kit		IPKF10.25-S-35									
MODEL 10.50 STD. ROTATION											
1998-2010*	10.50	10.5"	12 - 1/2" x 20	RH	None	1.94"	31		3.73	F10.5-373-NG	
*10.25 gears can be fitted to 99-10 models if using MKF10.25									4.10	F10.5-410-NG	
									4.30	F10.5-430-NG	
									4.88	F10.5-488-NG	
									Installation Kit		N/A
2011 & Up 37 Spline Pinion	10.50	10.5"	12 - 1/2" x 20	RH	None	2.00"	37	12	4.10	F105-410-37-NG	
2011 & Up 37 Spline Pinion	10.50	10.5"	12 - 1/2" x 20	RH	None	2.00"	37	12	4.30	F105-430-37-NG	
Installation Kit		N/A									
Master Kit - 99-10		MKF10.5									
Master Kit - 2011+		MKF10.5-37									
Pinion Kit - 2011+		PKF10.5-37									
Carrier Bearing Kit		CK-F10.25									

Classic GM & Corvette Gears

Application	Model	Ring Gear Dia.	Ring Gear Bolts	Ring Bolt Threads	Carrier Breaks	Pinion Shaft Dia.	Pinion Splines	Cover Bolts	Ratios	Part Number	
1955-1964 CAR											
*5.38 R&P FITS 4 SERIES CARRIER	55P	8.5"	10-3/8 x 24	RH	3.70/4.10	1.44"	17	none	3.08	GM55P-308-NG	
									3.36	GM55P-336-NG	
									3.55	GM55P-355-NG	
									3.73	GM55P-373-NG	
									4.11	GM55P-411T-NG	
									5.38	GM55P-538-RG*	
									Master Kit		MKGM55CHEVY
									Installation Kit		IKGM55CHEVY
									Internal Kit		IPKGM55P-S-17
									1955-1962 TRUCK "H033"		
	55T	9.375"	12-3/8 X 24	Threaded Through	none	1.44"	17	12	3.38	GM55T-338-NG	
Installation Kit		IKGM55CHEVY									
Master Kit		MKGM55CHEVY									
1963-1979 IRS CORVETTE CAST IRON HOUSING											
		8.375"	10-3/8x24	RH	2.73/390	1.626"	30		3.08	GMVET-308-NG	
									3.36	GMVET-336-NG	
									3.55	GMVET-355-NG	
									3.7	GMVET-370-NG	
									3.9	GMVET-390-NG	
									4.11	GMVET-411T-NG	
Thick		8.375"	10-3/8x24	RH	2.73/390	1.626"	30		4.33	GMVET-433T-NG	
									4.56	GMVET-456T-NG	
									Installation Kit		IKGMVET-CI
									Master Kit		MKGMVET-CI
									C5 CORVETTE		
*C5 97+ CORVETTE 3.90 THICK R&P GETRAG TRANSAXLE 2.75 & DOWN		8.125"	10-12mm X 1.25	RH		2.555"	26		3.42	GMVC5-342-NG	
									3.73	GMVC5-373-NG	
									3.9	GMVC5-390-NG	
									3.9	GMVC5-390T-NG*	
									4.1	GMVC5-410-NG	
									Master Kit		MKGMVET-C5



GM 7.25, 7.5, 7.625, 7.75 Ring & Pinion

Application	Model	Ring Gear Dia.	Ring Gear Bolts	Ring Bolt Threads	Carrier Breaks	Pinion Shaft Dia.	Pinion Splines	Cover Bolts	Ratios	Part Number	
MODEL 7.25" IFS REV.											
	7.25	7.25"	10 - 10mm x 1.25	RH Threads	None	1.314	27	10	3.08	GM7.2-308R-OE	
									3.42	GM7.2-342R-OE	
									3.73	GM7.2-373R-OE	
									4.10	GM7.2-411R-NG	
									4.56	GM7.2-456R-NG	
									Installation Kit		IKGM7.2IFS
									Master Kit - S10 / S15		MKGM7.2IFS-E
									Master Kit - 98-Up		MKGM7.2IFS-L
									Case 3.08 & Down		GM26046001
									Case 3.23 & Up		GM26046002
									Internal Kit		IPKGM7.2IFS-S
MODEL 7.5, 7.625 STD. ROTATION											
	7.5	7.625"	10 - 7/16" x 20	LH Threads	3.08/3.23	1.438"	27	10	3.08	GM7.5-308-NG	
									3.23	GM7.5-323-NG	
									3.42	GM7.5-342-NG	
									3.55	GM7.5-355-NG	
									3.73	GM7.5-373-NG	
									3.90	GM7.5-390-NG	
									4.11	GM7.5-411-NG	
									4.30	GM7.5-430-NG	
									4.56	GM7.5-456-NG	
									Installation Kit		IKGM7.5
									Master Kit - 81-Down		MKGM7.5-E
Master Kit - 82-99		MKGM7.5-L									
Master Kit		MKGM7.5V-B									
Bearing Kit		BKGM7.5									
Pinion Kit		PKGM7.5-B									
Carrier Bearing Kit		CK-GM7.5									
Case 3.08 & Dn		GM26033478									
Case 3.23-4.56		GM26033477									
Internal Kit (26 Spline 77-87)		IPKGM7.5-S-26									
Internal Kit (28 Spline 88+)		IPKGM7.625-S-28									
Solid Preload Spacer		SKCSGM7.5									
MODEL 7.75" 9-BOLT STD. ROTATION											
Borg Warner	7.75	7.75"	10 - 7/16 x 20	LH Threads	3.23	1.38	27	9	3.70	GM7.75-370BW-NG	
									3.70	GMBW-370-NG	
									3.90	GMBW-390-NG	
									Master Kit		MKGM7.75

*4.56 ratio requires modified cross shaft



GM 8.0, 8.2, 8.25 Ring & Pinion

Application	Model	Ring Gear Dia.	Ring Gear Bolts	Ring Bolt Threads	Carrier Breaks	Pinion Shaft Dia.	Pinion Splines	Cover Bolts	Ratios	Part Number	
MODEL 8.0" STD. ROTATION											
Trailblazer/Envoy	8.0	8.125"	10 - 7/16" x 20	LH Threads	None	1.626	27	10	3.42	GM8.0-342-NG	
									3.73	GM8.0-373-NG	
									4.11	GM8.0-411-NG	
									Installation Kit		IKGM8.0
									Master Kit		MKGM8.0
									Bearing Kit		BKGM8.0
									Pinion Kit		PKGM8.0
									Carrier Bearing Kit		CK-GM8.0
									Case		GM12479021
									Internal Kit		IPKGM8.0-S-28
									MODEL 8.2" STD. ROTATION		
1965-1970 10-Bolt	8.2	8.2"	10 - 3/8" x 24	RH Threads	2.76/3.07	1.438"	25	10	3.08	GM8.2-308-NG	
									3.36	GM8.2-336-NG	
									3.55	GM8.2-355-NG	
									3.73	GM8.2-373-NG	
									4.11	GM8.2-411-NG	
									4.56	GM8.2-456-NG	
									Installation Kit		IKGM8.2
									Master Kit		MKGM8.2
									Bearing Kit		BKGM8.2
									Pinion Kit		PKGM8.2
									Carrier Bearing Kit		CK-GM8.2
Internal Kit - Posi		IPKGM8.2-P-28									
Internal Kit - Standard		IPKGM8.2-S-28									
MODEL 8.2" B.O.P. STD. ROTATION											
Buick, Oldsmobile, Pontiac	8.2	8.2"	10 - 3/8" x 24	LH Threads	2.76/3.07	1.438"	27	10	3.36	GMBOP-336-NG	
									3.55	GMBOP-355-NG	
									3.90	GMBOP-390-NG	
									4.11	GMBOP-411-NG	
									Installation Kit		IKGM8.2
									Master Kit		MKGM8.2-BOP
Bearing Kit		BKGM8.2-BOP									
Pinion Kit		PKGM8.2									
Internal Kit - Posi		IPKGM8.2-P-28									
Internal Kit - Standard		IPKGM8.2-S-28									
MODEL 8.25" IFS REV. ROTATION*											
	8.25	8.25"	10-7/16 X 20	LH Threads	3.08/3.42	1.627	30	IFS	3.42	GM8.25-342R-NG	
									3.73	GM8.25-373R-NG	
									4.10	GM8.25-411R-NG	
									4.56	GM8.25-456R-NG	
									4.88	GM8.25-488R-NG	
									5.13	GM8.25-513R-NG	
									Installation Kit		IKGM8.25
									Master Kit - 99-Down		MKGM8.25IFS-A
									Master Kit - 99-Up		MKGM8.25IFS-B
									Case Halves - 07+ Aluminum		GM19149478
									Case Halves 99+ P/U & 00+ Suburban/Tahoe Aluminum		GM26058831
Carrier - Standard		GM26018131									
Internal Kit		IPKGM8.25IFS-S-28									

*6 Lug uses 8.25" IFS only



GM 8.5, 8.6 Ring & Pinion

Application	Model	Ring Gear Dia.	Ring Gear Bolts	Ring Bolt Threads	Carrier Breaks	Pinion Shaft Dia.	Pinion Splines	Cover Bolts	Ratios	Part Number								
MODEL 8.5" STD ROTATION																		
	8.5	8.625"	10 7/16" x 20	LH Threads	2.56/2.73	1.625"	30	10	2.73	GM8.5-273-NG								
									2.93	GM8.5-293-NG								
									3.08	GM8.5-308-NG								
									3.23	GM8.5-323-NG								
									3.42	GM8.5-342-NG								
									3.73	GM8.5-373-NG								
									3.90	GM8.5-390-NG								
									4.11	GM8.5-411-NG								
									4.56	GM8.5-456-NG								
									4.88	GM8.5-488-NG								
									5.13	GM8.5-513-NG								
									5.38	GM8.5-538-NG								
									Installation Kit									IKGM8.5
									Master Kit - All exc. Olds / Front									MKGM8.5
									Master Kit - Front									MKGM8.5-F
									Master Kit - Olds 28 Spline									MKGM8.5OLDS-28
									Bearing Kit - Standard									BKGM8.5
									Bearing Kit - HD (large journal carrier)									BKGM8.5-HD
									Pinion Kit									PKGM8.5
									Carrier Bearing Kit - Standard									CK-GM8.5
									Carrier Bearing Kit - HD (large journal carrier)									CK-GM8.5HD
									Case 2.56 & Down									GM26016804
									Case 2.73 & Up									GM26010481
									Case - HD (large journal)									GM26010481-HD
									Internal Kit - 28 Spline									IPKGM8.5-S-28
Internal Kit - 30 Spline									IPKGM8.5-S-30									
Solid Spacer Preload									SKCSGM8.5									
MODEL 8.6" STD ROTATION																		
	8.6	8.625"	10 7/16" x 20	LH Threads	2.56/2.73	1.625"	30	10	2.73	GM8.5-273-NG								
									2.93	GM8.5-293-NG								
									3.08	GM8.5-308-NG								
									3.23	GM8.5-323-NG								
									3.42	GM8.5-342-NG								
									3.73	GM8.5-373-NG								
									3.90	GM8.5-390-NG								
									4.11	GM8.5-411-NG								
									4.56	GM8.5-456-NG								
									4.88	GM8.5-488-NG								
									5.13	GM8.5-513-NG								
									5.38	GM8.5-538-NG								
									Installation Kit									IKGM8.6
									Master Kit - 99-08									MKGM8.6
									Master Kit - 09+									MKGM8.6-B
									Bearing Kit - 99-08									BKGM8.6
									Bearing Kit - 09+									BKGM8.6-B
									Pinion Kit									PKGM8.6
									Carrier Bearing Kit									CK-GM8.6
									Case - Standard (loaded)									GM26060749*
									Internal Kit - 99-mid 00 only (w/2 lg windows)									IPKGM8.6-99
									Internal Kit - 2000-Up (w/1 lg, 1 sm window)									IPKGM8.6-2000
									Internal Kit - 2007-Up									IPKGM8.6-2007
									LSD - 4 Spring 28-spline									NPGM8.5-3-28
									LSD - 4 Spring 30-spline									NPGM8.5-3-30

* '99- mid '00 cases with 2 lg windows or 1 lg, 1 sm window are discontinued; use this case as a replacement

GM 12P, 12T, 9.25 Ring & Pinion

Application	Model	Ring Gear Dia.	Ring Gear Bolts	Ring Bolt Threads	Carrier Breaks	Pinion Shaft Dia.	Pinion Splines	Cover Bolts	Ratios	Part Number									
8.875" GM 12-BOLT CAR																			
1964-1972 GM Passenger Cars	12 Bolt	8.875"	12 - 3/8" x 24	RH	3.08-3.90	1.625"	30	12	3.08	GM12P-308-NG									
									3.31	GM12P-331-NG									
									3.42	GM12P-342-NG									
									3.55	GM12P-355-NG									
									3.73	GM12P-373-NG									
									3.73	GM12P-373-4-NG									
									3.90	GM12P-390-NG									
									4.11	GM12P-411-NG									
									4.30	GM12P-430-NG									
									4.56	GM12P-456-NG									
									4.10	GM12P-411T-NG									
									Installation Kit									IKGM12P	
									Master Kit									MKGM12P	
									Bearing Kit									BKGM12P	
									Pinion Kit									PKGM12P	
									Carrier Bearing Kit									CK-GM12P	
									Internal Kit									IPKGM12-S-30	
									LSD - 4-Spring 30-Spline 3.08-3.90									NPGM12P-3-30	
									LSD - 4-Spring 33-Spline 3.08-3.90									NPGM12P-3-33*	
									LSD - 4-Spring 30-Spline 4.10+									NPGM12P-4-30	
									LSD - 4-Spring 33-Spline 4.10+									NPGM12P-4-33*	
									Solid Preload Spacer									SKCSGM12P	
									8.875" GM 12-BOLT TRUCK										
									1963-1982 GM 1/2 Ton Truck	12 Bolt	8.875"	12 - 3/8" x 24	RH	2.76-3.42	1.436"	30	12	3.08	GM12T-308-NG
																		3.42	GM12T-342-NG
3.73	GM12T-373-NG																		
4.11	GM12T-411-NG																		
4.56	GM12T-456-NG																		
Thick	8.875"	12 - 3/8" x 24	RH	3.42 & Down	1.436"	30	12	4.88		GM12T-488-NG									
								5.13		GM12T-513-NG									
								5.38		GM12T-538-NG									
								3.73		GM12T-373T-NG									
								4.11		GM12T-411T-NG									
Installation Kit										IKGM12T									
Master Kit										MKGM12T									
Bearing Kit										BKGM12T									
Pinion Kit										PKGM12T									
Carrier Bearing Kit										CK-GM12T									
Case 3.73 & Up									GM6258086										
Internal Kit									IPKGM12-S-30										
Solid Preload Spacer									SKCSGM12T										
9.25" IFS REV. ROTATION MODEL*																			
*All GM 2500/3500 trucks with 8 lug axles use 9.25"	9	9.25"	12 - 12mm x 1.50	LH Threads	None	1.876"	30	IFS	3.42	GM9.25-342R-NG									
									3.73	GM9.25-373R-NG									
									4.11	GM9.25-411R-NG									
									4.30	GM9.25-430R-NG									
									4.56	GM9.25-456R-NG									
									4.88	GM9.25-488R-NG									
									5.13	GM9.25-513R-NG									
									Installation Kit									IKGM9.5	
									Master Kit									MKGM9.25IFS	
									Bearing Kit									BKGM9.5	
									Pinion Kit									PKGM9.5	
									Case Halves - 99-Up									GM12479151	
									Case Halves - 98-Down									GM15573202	
									Carrier Case - Standard									GM14038087	
									Carrier Case - Loaded									GM40013506	
Internal Kit									IPKGM9.5-S-33										

*Requires after-market axleshaftss

9.25" IFS REV. ROTATION MODEL*

*All GM 2500/3500 trucks with 8 lug axles use 9.25"

GM 9.5, 14T, 11.5" Ring & Pinion										
Application	Model	Ring Gear Dia.	Ring Gear Bolts	Ring Bolt Threads	Carrier Breaks	Pinion Shaft Dia.	Pinion Splines	Cover Bolts	Ratios	Part Number
MODEL 9.5" 14 BOLT, SEMI-FLOAT										
	9.5	9.50"	12 - 12mm x 1.50	LH Threads	None	1.875"	30	14	3.42	GM9.5-342-NG
									3.73	GM9.5-373-NG
									4.10	GM9.5-410-NG
									4.56	GM9.5-456-NG
									4.88	GM9.5-488-NG
									5.13	GM9.5-513-NG
									5.38	GM9.5-538-NG
									Installation Kit	IKGM9.5
									Master Kit - 79-97	MKGM9.5-A
									Master Kit - 98-Up	MKGM9.5-B
									Bearing Kit	BKGM9.5
									Pinion Kit	PKGM9.5
									Case - Standard	GM14038087
									Case - Loaded	GM40013506
Internal Kit	IPKGM9.5-S-33									
MODEL 10.5" 14T FULL FLOAT STD ROTATION										
	14 Bolt	10.5"	12 - 1/2" x 20	RH Threads	4.10/4.56	1.75"	30	14	3.42	GM14T-342-NG
									3.73	GM14T-373-NG
									4.10	GM14T-410-NG
									4.56	GM14T-456-NG
									4.88T	GM14T-488T-NG
									5.13T	GM14T-513T-NG
									5.38T	GM14T-538T-NG
	Installation Kit - 88-Down	IKGM14T-A								
	Installation Kit - 89-Up	IKGM14T-B								
	Master Kit - 88-Down	MKGM14T-A								
	Master Kit - 88-97	MKGM14T-B								
	Master Kit - 98-Up	MKGM14T-C								
	Bearing Kit - 88-Down	BKGM14T-A								
	Bearing Kit - 89-97	BKGM14T-B								
Bearing Kit - 98-Up	BKGM14T-C									
Pinion Kit - 88-Down	PKGM14T-A									
Pinion Kit - 89-Up	PKGM14T-B									
Carrier Bearing Kit	CK-GM14T									
Case 4.10 & Down	GM6258336									
Case 4.56 & Up	GM6258340									
Internal Kit	IPKGM14T-S-30									
Solid Preload Spacer	SKCSGM14T									
AAM MODEL 11.5" FULL FLOAT STD. ROTATION										
All Duramax and 8.1L	11.5	11.50"	12 - 14mm x 1.50	RH Threads	None	2.00"	30	14	3.42	AAM11.5-342-NG
									3.73	AAM11.5-373-NG
									4.11	AAM11.5-411-NG
									4.30	AAM11.5-430-NG
									4.44	AAM11.5-444-NG
									4.56	AAM11.5-456-NG
									4.88	AAM11.5-488-NG
									5.13	AAM11.5-513-NG
									Installation Kit	IKAAM11.5
									Master Kit	MKAAM11.5
									Bearing Kit	BKAAM11.5
									Carrier Bearing Kit	CK-AAM11.5
									Case - Loaded	AAM40023075
									Case - Standard	GM40000278
Internal Kit	IPKGM11.5-S-30									

GM 195MM, 218MM & 250MM, Camaro Ring & Pinion												
Application	Model	Ring Gear Dia.	Ring Gear Bolts	Ring Bolt Threads	Carrier Breaks	Pinion Shaft Dia.	Pinion Splines	Cover Bolts	Ratios	Part Number		
2010 + UP CAMARO (195MM = 7.6" IRS V6 CAMARO)												
Carrier Case Complete		7.6	10	7/16-20RH				10	2.92	GM7.6IRS-292-OE		
									3.27	GM7.6IRS-327-OE		
									3.27	GM40047322		
									2.92	GM40047523		
									Install Kit	IKGM7.6IRS		
									Yoke	YOKOGM40081311		
2010 + UP CAMARO (218MM = 8.6" IRS V8 CAMARO)												
		8.6	10	7/16-20RH				10	3.27	GM8.6IRS-327-OE		
									3.45	GM8.6IRS-345-OE		
									3.91	GM8.6IRS-391-OE		
									Clutch Type LSD	GM40053855		
									Install Kit	IKGM8.6IRS		
									Yoke	YOKOGM40081311		
2010 + UP CAMARO (250MM = 9.85" IRS ZL1 CAMARO WHICH IS SUPERCHARGED 6.2L)												
		9.85							3.23	GM9.85IRS-323-OE		
									3.73	GM9.85IRS-373-OE		
									Clutch Type LSD	GM40104505		
									Master Install Kit	MKGM9.85IRS		
									Yoke	YOKOGM40088189		



Suzuki / Nissan Ring & Pinion

Application	Model	Ring Gear Dia.	Ring Gear Bolts	Ring Bolt Threads	Carrier Breaks	Pinion Shaft Dia.	Pinion Splines	Cover Bolts	Ratios	Part Number
SAMURAI										
84-95 Samurai SJ413	FT/RR		10			1.38"	26		4.57	SUZSAM-457-NG
									5.38	SUZSAM-538-NG
										Installation Kit IKISAM
										Master Kit MKISAM
NISSAN M205										
	M205		10			1.63"	29	9	2.94	M205-294-NG
									3.36	M205-336-NG
									4.10	M205-410-NG
									4.56	M205-456-NG
										Master Kit MKM205
NISSAN M226										
	M226		10			1.63"	24	12	2.94	M226-294-NG
									3.13	M226-313-NG
									3.36	M226-336-NG
									3.54	M226-354-NG
									3.73	M226-373-NG
									4.10	M226-410-NG
									4.56	M226-456-NG
										Master Kit MKM226
NISSAN H233B										
	H233B		9			1.58"	29	Dropout	4.63	H233B-463-NG
									4.63	H233B-463R-NG
									5.13	H233B-513-NG
									5.13	H233B-513R-NG
										Master Kit MKH233B
NISSAN R200										
97-04 Frontier D22 99-04 Xterra 96-04 Pathfinder, Terranto & QX4	R200		10			1.395"	27	8	5.13	R200-513-NG



Toyota 7.5", 7.5" R Ring & Pinion

Application	Model	Ring Gear Dia.	Ring Gear Bolts	Ring Bolt Threads	Carrier Breaks	Pinion Shaft Dia.	Pinion Splines	Cover Bolts	Ratios	Part Number
7.5" IFS STD 2WD REAR										
1986-1995 Pickup/4Runner	7.5	7.50"	10 - 11mm x 1.0	RH	None	1.378"	23	8 Bolt	4.10	T7.5-411-NG
1986-2004 International Hilux IFS	7.5	7.50"	10 - 11mm x 1.0	RH	None	1.378"	23	8 Bolt	4.56	T7.5-456-NG
Various Rear 2WD truck & car	7.5	7.50"	10 - 11mm x 1.0	RH	None	1.378"	23	8 Bolt	4.88	T7.5-488-NG
									5.29	T7.5-529-NG
									5.71	T7.5-571-NG
										Installation Kit IKT7.5
										Master Kit* 45MM MKT7.5-4CYL
										Master Kit* 50MM MKT7.5-V6
										Master Kit Rear MKT7.5-REAR
										Bearing Kit* 45MM BKT7.5-4CYL
										Bearing Kit* 50MM BKT7.5-V6
										Pinion Kit PKT7.5
										Case TOY41311-35060
										Internal Kit IPKT7.5-S-27
										Solid Preload Spacer SKCST7.5
7.5" IFS REVERSE CLAMSHELL										
1995.5-2004 Tacoma	7.5	7.50"	10 - 11mm x 1.0	RH	None	1.378"	23	Clamshell	4.56	T7.5R-456R-NG
1996-2002 4Runner	7.5	7.50"	10 - 11mm x 1.0	RH	None	1.378"	23	Clamshell	4.88	T7.5R-488R-NG
Prado 90	7.5	7.50"	10 - 11mm x 1.0	RH	None	1.378"	23	Clamshell	5.29	T7.5R-529R-NG
										Installation Kit IKT7.5
										Master Kit MK7.5-REV
										Bearing Kit BKT7.5-V6
										Pinion Kit PKT7.5
										Case TOY41311-35060
										Internal Kit IPKT7.5-S-27
										Solid Preload Spacer SKCST7.5



Toyota 8" 4 cyl / 6 cyl Ring & Pinion

Application	Model	Ring Gear Dia.	Ring Gear Bolts	Ring Bolt Threads	Carrier Breaks	Pinion Shaft Dia.	Pinion Splines	Cover Bolts	Ratios	Part Number
8" "4CYL" TYPE										
Requires YOKTOYFIT-KIT-29 (flange, nut, seal)	4/6Cyl	8.00"	10 - 11mm x 1.0	RH	None	1.378	29	8 Bolt	3.58	TV6-358-29-NG
									3.73	TV6-373-29-NG*
									4.11	TV6-411-29-NG*
									4.56	TV6-456-29-NG*
									4.88	TV6-488-29-NG*
									5.29	TV6-529-29-NG*
									5.71	TV6-571-29-NG*
				Installation Kit			4/6Cyl			IKT8
				Master Kit - 85 & Older with OEM R&P			4cyl	8.00"	27	MKT8-A
				Bearing Kit - 85 & Older with OEM R&P			4cyl	8.00"	27	BKT8-A
				Pinion Kit - 85 & Older with OEM R&P			4cyl	8.00"	27	PKT8-A
				Master Kit - TV6 Gear or 86+OEM 4Cyl			4/6Cyl	8.00"	27/29	MKT8-B
				Master Kit - V6 Carrier in 4Cyl & ARB			4/6Cyl	8.00"	27/29	MKT8-B-50MM
				Bearing Kit - TV6 Gear or 86+OEM 4Cyl			4/6Cyl	8.00"	27/29	BKT8-B
				Pinion Kit TV6 Gear or 86+ OEM 4Cyl			4/6Cyl	8.00"	27/29	PKT8-B
				Loaded Case						TOY40020-COM
				3rd Member Case						TOY35031
				Bare Case						TOY40020
				Internal Parts Kit						IPKT8-S-30
				Solid Preload Spacer						SKCST8
8" "V6" TYPE + OEM E-LOCKER**										
*Requires YOKTOYFIT-KIT-29 (flange, nut, seal) **LJ78 & 4Runner Models with factory 4.88 ratio require new 3rd Member Case to install aftermarket R&P	V6	8.00"	10-11mm x 1.0	RH	None	1.378	29		3.58	TV6-358-29-NG*
									3.73	TV6-373-29-NG*
									4.11	TV6-411-29-NG*
									4.30	TV6-430-29-NG*
									4.56	TV6-456-29-NG*
									4.88	TV6-488-29-NG*
								5.29	TV6-529-29-NG*	
								5.71	TV6-571-29-NG*	
				Installation Kit						IKTV6-B
				Master Kit - All exc OEM E-Locker						MKTV6-B
				Master Kit - W/ OEM E-Locker						MKT8-ELOC-B
				Bearing Kit						BKTV6
				Pinion Kit						PKTV6-B
				Loaded Case						TOY41311-60060-COM
				3rd Member Case						TOY35031-V6
				Internal Parts Kit						IPKTV6-S-30
				Solid Preload Spacer						SKCSTV6

Toyota 8", 8" Rev Ring & Pinion

Application	Model	Ring Gear Dia.	Ring Gear Bolts	Ring Bolt Threads	Carrier Breaks	Pinion Shaft Dia.	Pinion Splines	Cover Bolts	Ratios	Part Number
8" REVERSE IFS CLAMSHELL										
2003 & Up 4Runner, Prado 120, 150	8" Clam	8"	10 - 12mm x 1.0	RH	3.73/3.91	1.378	29	8	3.73	T8S-373R-NG
									4.10	T8S-410R-NG
2005 & Up Hilux & Tacoma	8" Clam	8"	10 - 12mm x 1.0	RH	3.73/3.91	1.378	29	8	3.90	T8S-390R-NG
									4.10	T8S-410R-NG
Note: All Front Tacoma Gears are Reverse Rotation 2007 & Up FJ Cruiser										
Thick Gears fit OEM 3.73 & Dn case or ARB RD121	Thick	8"	10 - 12mm x 1.0	RH	3.73 and Down	1.378	29	8	4.10	T8S-410RT-NG
									4.56	T8S-456RT-NG*
									4.88	T8S-488RT-NG*
									Installation Kit	
Master Kit		MKT8S-R								
Solid Preload Spacer		SKCST8-CLAM								
Pinion Kit		PKTV6-B								
Case 3.73 & Down		TOY41311-35120								
Case 3.90 & Up		TOY41311-71020								
Internal Kit		IPKT8S-S-30CLAM								
8" REVERSE IFS LAND CRUISER 100 FRONT										
2002 & Down Requires YOKTOYFITKIT-29 (flange, nut, seal)	8" Rev	8"	10 - 11mm x 1.0	RH	None	1.378	29	8	4.10	T8R-410R-NG
									4.30	T8R-430R-NG*
									4.88	T8R-488R-NG*
									Installation Kit	
Master Kit - 98-07 LC 100 IFS Only		MK TLC100-IFS								
Solid Preload Spacer		SKCSTV6								
Pinion Kit		PKTV6-B								
8" HIGH PINION SOLID FRONT AXLE										
1991+ Landcruiser 80/100/105 and All LJ/RJ70	8" Rev	8"	10 - 11mm x 1.0	RH	None	1.378	29		4.10	T8R-410R-NG*
									4.30	T8R-430R-NG*
									4.56	T8R-456R-NG*
									4.88	T8R-488R-NG*
									5.29	T8R-529R-NG*
Installation Kit		IKTV6-B								
Master Kit - All exc. OEM E-Locker		MKTV6-B								
Master Kit - W/ OEM E-Locker		MKT8-ELOC-B								
Bearing Kit		BKTV6								
Pinion Kit		PKTV6-B								
Case		TOY41311-60060								
Loaded Case		TOY41101-60090								
3rd Member Case		TOY35031-V6								
Internal Parts Kit		IPKT8-S-30								
Solid Preload Spacer		SKCSTV6								
*2002 & Down Requires YOKTOYFITKIT-29 (flange, nut, seal)										



Toyota 8.2", 8.4", 9" Rev IFS Ring & Pinion

Application	Model	Ring Gear Dia.	Ring Gear Bolts	Ring Bolt Threads	Carrier Breaks	Pinion Shaft Dia.	Pinion Splines	Cover Bolts	Ratios	Part Number	
STD. 8.2" SHIM TYPE											
FJ Cruiser, 4Runner, Prado 2010+	Toyota 8.2		12 - 11mm x 1.0	RH	None	1.57"	29		4.56	T8.2-456-NG	
									4.88	T8.2-488NG	
									Installation Kit		IKT8.2
									Master Installation Kit		MKT8.2
									Master Installation Kit With Oem Locker		MKT8.2-ELOC
STD. 8.4" BRIDGED CAPS											
Tacoma without elocker	Toyota 8.4	8.125"	12 - 12mm x 1.0	RH	None	1.57"	30	10	4.10	T100-410-NG	
2000-2006 Tundra & Sequoia T100	Toyota 8.4	8.125"	12 - 12mm x 1.0	RH	None	1.57"	30	10	4.56	T100-456-NG	
	Toyota 8.4	8.125"	12 - 12mm x 1.0	RH	None	1.57"	30	10	4.88	T100-488-NG	
									5.29	T100-529-NG	
										Installation Kit	IKT100
										Master Kit	MKT100
										Bearing Kit	BKT100
										Pinion Kit	PKT100
										Case - Used	TOY35026-USED
										Internal Kit	IPKT100-S-30
										Solid Spacer Kit	SKCST100
REVERSE 9" IFS FRONT CLAMSHELL											
2007+ Tundra 2008+ Land Cruiser 200 & Sequoia	Toyota 8.9R	8.75"	12 - 12mm x 1.0	RH	None	1.57"	34		Clamshell	4.88	T9R-488-NG
									Installation Kit		IKT9R-IFS
									Master Kit		MKT9R-IFS

Toyota 9.5, 10.5 Ring & Pinion

Application	Model	Ring Gear Dia.	Ring Gear Bolts	Ring Bolt Threads	Carrier Breaks	Pinion Shaft Dia.	Pinion Splines	Cover Bolts	Ratios	Part Number	
TOYOTA 9.5" STD. ROTATION											
97 & Down Land Cruiser 84 & Down Land Cruiser Need Yokes *requires new flange or IKTLC-RGBOLT Kit	9.5"	9.25"	12 - 12mm x1.0	Through Nut & Bolt	None	1.575"	27	10	3.70	TLC-370-NG*	
									4.10	TLC-410-NG*	
									4.56	TLC-456-NG*	
									4.88	TLC-488-NG*	
									5.29	TLC-529-NG*	
98 - 07 LC100 & 105 99 - 09 LC 78 & 79 99 & Up LC70 98 - 07 Lexus LX470* 08 & Up LC200 & LX570** VZ spec Autana 80 *98 -02 Requires YOKT35100-MULTI Flange **08 & Up LC200 Requires YOKT35100-MULTI Flange	9.5"	9.25"	12 - 12mm x1.0	RH	None	1.575"	29	10	4.30	TLC100-430-NG	
									4.88	TLC100-488-NG	
									Installation Kit		IKTLC
									Master Kit - 90-Down		MKTLC-A
									Master Kit - 91-Up		MKTLC-B
									Master Kit - w/ E-Locker		MKTLC-ELOC
									Bearing Kit		BKTLC
									Pinion Kit		PKTLC
									Case - 97-Down		TOYLC-CASE
									Case - 98-Up		Call Us
									Internal Kit - 97-Down		IPKTLT-S-30
									Solid Preload Spacer - 90-Down		SKCSTLC-PRE90
									Solid Preload Spacer - 90-Up		SKCSTLC-90+
									Ring Gear Bolt & Nut Kit		IKTLC-RGBOLT
									10.5" STD. REAR		
2007 & Up Tundra with 5.7L	10.5"	10.5"	12 - 14mm x1.0	RH	None	1.77"	34	12	4.88	T10.5-488-NG	
									Installation Kit - 07+ 5.7L		IKT10.5
									Master Kit - 07+ 5.7L		MKT10.5
									Master Kit - 07+ Tundra w/ 4.7 or 4.6L, when using OE Ring & Pinion		MKT9.5
									Bearing Kit - 07+ 5.7L		BKT10.5
									Pinion Kit - 07+ 5.7L		PK10.5
									Case		Call Us
									Internal Kit		IPK10.5
									Auburn LSD		AG5420134

TRACTION DEVICES

Nitro Limited Slip Differentials

Application	Model	Carrier Break	Spline Count	Part Number
CHRYSLER				
COMPLETE SURE GRIP/Power Lock Chrysler 8.75 all Dropouts	8.75	none	30	PLC8.75
AMC				
AMC 20 Trac Lock COMPLETE LSD	M20	3.08 & Up	29	TLM20-3-29
Model/Dana 35 Trac Lock, COMPLETE LSD	M35	2.73-3.31	27	TLM35-3-27
Model/Dana 35 Trac Lock, COMPLETE LSD, 1-5/8" TALL	M35	3.54 & Up	27	TLM35-4-27
DANA				
Dana 36ICA Trac Lock, COMPLETE LSD, 84-96 CORVETTE W/ AUTO	D36 ICA	3.07 & Up		TLD36-3-27
Dana 44 19 Spline Power Lock, COMPLETE LSD, USES 25590 BEARING	D44	3.73 & Down	19	PLD44-3-19
Dana 44 30 Spline Power Lock, COMPLETE LSD	D44	3.73 & Down	30	PLD44-3-30
Dana 44 19 Spline Power Lock, COMPLETE LSD, USES 25590 BEARING	D44	3.92 & Up	19	PLD44-4-19
Dana 44 30 Spline Power Lock, COMPLETE LSD	D44	3.92 & Up	30	PLD44-4-30
Dana 44 30 Spline Trac Lock, COMPLETE LSD (EXCL REAR C-CLIP)	D44	3.73	30	TLD44-3-30
Dana 44 30 Spline Trac Lock, COMPLETE LSD (EXCL REAR C-CLIP)	D44	3.91 & Up	30	TLD44-4-30
Dana 44 JK 30 Spline Trac Lock, COMPLETE LSD, Jeep JK, 1/2" Holes	D44		30	TLD44-JK
Dana 44HD 30 Spline Trac Lock, COMPLETE LSD, ZJ, WJ (C-CLIP & BOLT-IN REAR)	D44HD			TLD44HD
Dana 44 Trac Lock Corvette, COMPLETE LSD, Corvette	D44HD/IRS			TLD44VETTE
Dana 50 30 Spline Power Lock, COMPLETE LSD	D50		30	PLD50-30
Dana 60 30 Spline Power Lock, COMPLETE LSD (F/F ONLY)	D60	4.10 & Down	30	PLD60-3-30
Dana 60 35 Spline Power Lock, COMPLETE LSD (F/F ONLY)	D60	4.10 & Down	35	PLD60-3-35
Dana 60 30 Spline Power Lock, COMPLETE LSD (F/F ONLY)	D60	4.56	30	PLD60-4-30
Dana 60 35 Spline Power Lock, COMPLETE LSD (F/F ONLY)	D60	4.56	35	PLD60-4-35
Dana 60 30 Spline Trac Lock, COMPLETE LSD (NOT C-CLIP)	D60	4.10 & Down	30	TLD60-3-30
Dana 60 32 Spline Trac Lock, COMPLETE LSD (NO ABS)	D60	4.10 & Down	32	TLD60-3-32
Dana 60 35 Spline Trac Lock, COMPLETE LSD, INCL ABS (F/F OR S/F)	D60	4.10 & Down	35	TLD60-3-35
Dana 70 32 Spline Power Lock, ABS COMPATIBLE	D70	4.10 & Down	32	PLD70-3-32
Dana 70 32 Spline Power Lock, ABS COMPATIBLE	D70	4.56 & Up	32	PLD70-4-32
Dana 70 35 Spline Power Lock, ABS COMPATIBLE	D70	4.10 & Up	35	PLD70-4-35
Dana 70HD 35 Spline Power Lock, ABS COMPATIBLE	D70HD	4.10 & Down	35	PLD70HD-3-35
Dana 80 35 Spline Trac Lock, COMPLETE LSD	D80	3.73 & Down	35	TLD80-3-35
Dana 80 35 Spline Trac Lock, COMPLETE LSD (ROUND X-PIN)	D80	4.10 & Down	35	TLD80-4-35
FORD				
Ford 10.25 TRAC LOCK, COMPLETE LSD	10.25		35	TLF10.25
Ford 10.5 HD 3 PINION LSD (F/F ONLY)	10.5		35	TLF10.5
Ford 7.5 TRAC LOCK, COMPLETE LSD (HAS NOTCHED X-PIN)	7.5		28	TLF7.5
Ford 8.8 TRAC LOCK, COMPLETE LSD (INCL IRS)	8.8		28	TLF8.8-28
Ford 8.8 TRAC LOCK, COMPLETE LSD (NOT S-SPRING)	8.8		31	TLF8.8-31
Ford 9.75 TRAC LOCK, COMPLETE LSD	9.75		34	TLF9.75
GENERAL MOTORS				
55-64 GM PASSENGER CAR Drop out style 3Rd Member Power Lock LSD	55P	3.73 & Down	17	PLGM55P-3-17
GM Cast Iron Corvette 63-79 4 Spring 400Lb Carbon Fiber Clutches	CIVet	2.73-3.90	17	NPGMVET-3-17
GM 8.875 12 Bolt Passenger 30 Spline 400Lb Carbon Fiber Clutches 4 Spring	12P	3.08-3.90	30	NPGM12P-3-30
GM 8.875 12 Bolt Passenger 33 Spline 400Lb Carbon Fiber Clutches 4 Spring	12P	3.08-3.90	33	NPGM12P-3-33
GM 8.875 12 Bolt Passenger 30 Spline 400Lb Carbon Fiber Clutches 4 Spring	12P	4.10+Up	30	NPGM12P-4-30
GM 8.875 12 Bolt Passenger 33 Spline 400Lb Carbon Fiber Clutches 4 Spring	12P	4.10+Up	33	NPGM12P-4-33
GM 8.2 10 Bolt 28 Spline 400Lb Carbon Fiber Clutches 4 Spring(BOP 3.31+)	8.2	3.08+Up	28	NPGM8.2-P-28
GM 8.5 10 Bolt 28 Spline 400Lb Carbon Fiber Clutches 4 Spring(Large Journal use HD Bearings)	8.5	2.73+Up	28	NPGM8.5-P-28
GM 8.5 10 Bolt 30 Spline 400Lb Carbon Fiber Clutches 4 Spring(Large Journal use HD Bearings)	8.5	2.73+Up	30	NPGM8.5-P-30





Full Spools

Application	Model	Carrier Break	Spline Count	Deck Height	Journal Thickness	Part Number
AMC						
M20 Full Steel Spool	M20	3.08 & Up	29			FSM20-3-29
CHRYSLER						
8.75" Chrysler Steel Spool	8.75		30	2-1/16"	2.050"	FSC8.75-30
8.75" Chrysler Steel Spool	8.75		35	2-1/16"	2.050"	FSC8.75-35
DANA						
D44 Full Spool	D44	3.73 & Down	30			FSD44-3-30DN
D44 Full Spool	D44	3.92 & Up	30	2-3/8"		FSD44-4-30UP
D60 Full Steel Spool	D60	4.10 & Down	35			FSD60-3-35
D60 Full Spool	D60	4.56 & Up	30			FSD60-4-30
D60 Full Spool	D60	4.56 & Up	35			FSD60-4-35
FORD						
8.8" Steel Spool	F8.8		31			FSF8.8-31
8.8" Steel Spool	F8.8		35			FSF8.8-35
9" Ford Steel Spool	F9.0		28	2-1/4"	1.785"	FSF9-28
9" Ford Steel Spool -Light Weight	F9.0		28	2-1/4"	1.785"	FSF9-28-LW
9" Ford Steel Spool	F9.0		31	2-1/8"	1.785"	FSF9-31
9" Ford Steel Spool, Scalloped Journal - Light Weight	F9.0		31		1.785"	FSF9-31-LW
Ford 9" Full Spool	F9.0		33			FSF9-33
9" Ford Full Spool, 30 Deg Deck	F9.0		35	2-3/16"	2"	FSF9-35-LW
9" Ford Steel Spool (Fits 2.8" & 3.062" Cases)	F9.0		35		1.785"	FSF9-35SMALL
Ford 9" Steel Spool -Light Weight	F9.0		40		2.0"	FSF9-40-LW
GM						
12P Steel Spool	12P	4.10 & Up	30	2-1/16"	1.785"	FSGM12P-4-30
12P Steel Spool	12P	4.10 & Up	33	2-1/16"	1.785"	FSGM12P-4-33
12P Full Spool	12P	4.10 & Up	35	2-1/16"	1.785"	FSGM12P-4-35
14T Steel Spool	14T	4.10 & Down	30			FSGM14T-3-30
14T Steel Spool	14T	4.10 & Down	40			FSGM14T-3-40
GM 8.5" Full Spool	GM 8.5		28			FSGM8.5-28
GM 8.5" Full Spool (Uses Large Bearings)	GM 8.5		30			FSGM8.5-30
TOYOTA						
8" Toyota Truck Full Steel Spool	T8.0		30	1-11/16"	45MM	FST8-30
V6 Toyota 8" Steel Spool	V6&T		30		50MM	FSTV6-30



Mini Spools

Application	Description	x/pin shaft dia.	Spline Count	Part Number
DANA				
D44			30	MSD44-30
FORD				
8.8" Ford	Mini Spool		28	MSF8.8-28
8.8" Ford (7/8 X/Pin)	Mini Spool	7/8	31	MSF8.8-31
Ford 8.8" -Chromoly	x/p shaft	7/8		MSXPF8.8-7/8
8", 8.8" AND 9" -Chromoly	x/p shaft	3/4		MSXPF9
8" & 9"	Mini Spool		28	MSF9-28
9" Ford	Mini Spool		31	MSF9-31
GM				
GM 7.5" -Chromoly	x/p shaft			MSXPGM7.5
7.5" ONLY! (NOT 7.625)	Mini Spool		26	MSGM7.5-26
7.625"	Mini Spool		28	MSGM7.625-28
8.2" and 55P	x/p shaft	.733"		MSXPGM8.2
8.2"	Mini Spool		28	MSGM8.2-28
8.5" -Chromoly	x/p shaft			MSXPGM8.5
8.5"	Mini Spool		28	MSGM8.5-28
8.5"	Mini Spool		30	MSGM8.5-30
12 Bolt GM 8.875" -Chromoly	x/p shaft			MSXPGM12
12P & 12T	Mini Spool		30	MSGM12-30
10.5" 14-Bolt	Mini Spool		30	MSGM14T-30
Buick, Olds, Pontiac				
8.2" Buick/Olds/Pontiac	Mini Spool		28	MSGM8.2BOP-28
SUZUKI				
86-95 Samurai & 89-00 Sidekick	Mini Spool		26	MSSAM-26
TOYOTA				
9.5" semi- or full-float 97-Older Landcruiser	Mini-Spool		30	MSGM12-30



Yokes

Application	Model	Spline	Style	U-Joint	Description	Part Number
AAM GM ONLY	11.5		STRAP	1415	YOKE	YOKAAM11.5-1415
AAM Dodge ONLY	11.5		N/A		SQUARE FLANGE PINION YOKE	YOKAAM11.5-FLANGE
CHRYSLER						
			STRAP	7290	STRAP KIT (4 BOLTS + 2 STRAPS)	YOKC7290-STRAP
Jeep XJ	8.25	27	STRAP	1310	YOKE	YOKC8.25-1310-27S
	8.25	27	U-BOLT	1310	FORGED YOKE	YOKC8.25-1310-27U
	7.25/8.25	27	STRAP	7260	YOKE, W/ STRAP KIT	YOKC8.25-7260-27S
	7.25/8.25	27	STRAP	7290	YOKE	YOKC8.25-7290-27S
	8.75	10	STRAP	1350	CAST YOKE	YOKC8.75-1350-10C
	8.75	10	U-BOLT	1350HD	COARSE, FORGED YOKE	YOKC8.75-1350-10F
	8.75	10	U-BOLT	1350HD	COARSE, YOKE	YOKC8.75-1350-10U
	8.75	29	U-BOLT	1350	FORGED YOKE	YOKC8.75-1350-29U
	8.75	10	U-BOLT	7260	COARSE, BILLET STEEL YOKE	YOKC8.75-7260-10B
	8.75	10	STRAP	7260	COARSE, CAST STEEL YOKE	YOKC8.75-7260-10C
	8.75	29	STRAP	7260	FINE, SMALL YOKE Strap	YOKC8.75-7260-29
	8.75	10	U-BOLT	7290	COARSE, BILLET STEEL YOKE	YOKC8.75-7290-10B
	8.75	10	STRAP	7290	COARSE, CAST STEEL YOKE	YOKC8.75-7290-10C
	8.75	10	U-BOLT	7290	COARSE, FORGED STEEL YOKE	YOKC8.75-7290-10F
	8.75	29	U-BOLT	7290	BILLET STEEL, YOKE	YOKC8.75-7290-29B
	8.75/9.25	29	STRAP	7290	YOKE, (STRAP)	YOKC8.75-7290-29S
RAM	9.25		N/A		REAR, ROUND FLANGE YOKE	YOKC9.25-ROUND
AAM 03+ Ram	9.25		N/A		FLANGE	YOKC9.25R
DANA						
Model 20/ Model 35	M20	28	STRAP	1310	M20 1310 PINION YOKE (STRAP STYLE)	YOKM20-1310-28S
	M20	28	U-BOLT	1310	M20 1310 PINION YOKE (U-BOLT STYLE)	YOKM20-1310-28U
	M35	26	STRAP	1310	M35 1310 PINION YOKE, STRAP TYPE	YOKM35-1310-26S
	M35	26	STRAP	1330	M35 1330 PINION YOKE, STRAP TYPE	YOKM35-1330-26S
Jaguar	D44	26	N/A		COMPANION FLANGE	YOK2-1-1881X
Jeep WJ	D30	26	N/A		ROUND BELL TYPE FOR GNK DRIVESHAFT, YOKE	YOKD30-WJ
Jeep JK	D30/D44	26	N/A		FRONT PINION FLANGE	YOKD30JK-24
Dana Axles	D30/D44/D50	26	STRAP	1310	FINE, YOKE	YOKD44-1310-26S
	D30/D44/D50	26	U-BOLT	1310	FINE, (NOT D44HD) D300, YOKE	YOKD44-1310-26U
	D30/D44/D50	26	STRAP	1330	FINE, (NOT D44HD) (1-1/16" CAP), YOKE	YOKD44-1330-26S
	D30/D44/D50	26	U-BOLT	1330	FINE, (NOT D44HD) (1-1/8" CAP), YOKE	YOKD44-1330-26U
	D30/D44/D50	26	STRAP	1350	FINE, STRAP -YOKE	YOKD44-1350-26S
80-82 Corvette	D44				LH SIDE, YOKE (MANUAL TRANS)	YOKD44-LH
80-82 Corvette	D44				RH SIDE, YOKE (MANUAL TRANS)	YOKD44-RH
80-82 Corvette	D44				LH SIDE, YOKE (AUTO TRANS)	YOKD44AUTO-LH
80-82 Corvette	D44				RH SIDE, YOKE (AUTO TRANS)	YOKD44AUTO-RH
84-96 Corvette	D44HD				LH SIDE, YOKE	YOKD44HD-LH
84-96 Corvette	D44HD				RH SIDE, YOKE	YOKD44HD-RH
Corvette	D44HD				SNAP RING ONLY 0.090",SIDE YOKE	YOKD44HD-SNAP
Jeep JK	D30/D44	24	U-BOLT	1310	YOKE	YOKD44JK-1310-24
Jeep JK	D30/D44	24	U-BOLT	1350	YOKE	YOKD44JK-1350-24
Jeep JK	D44	24	N/A		REAR PINION FLANGE	YOKD44JKREAR-24
Dana Axles	D44HD/D60/D70	29	STRAP	1310	YOKE	YOKD60-1310-29S
	D44HD/D60/D70	29	U-BOLT	1310	YOKE	YOKD60-1310-29U
	D60/D70	29	STRAP	1330	1-1/16", YOKE	YOKD60-1330-29S
	D60/D70	29	U-BOLT	1330	1-1/8", YOKE	YOKD60-1330-29U
	D60/D70	29	STRAP	1350	1-3/16", YOKE	YOKD60-1350-29S
	D60/D70	29	U-BOLT	1350	1-3/16", YOKE	YOKD60-1350-29U
	D60/D70	29	STRAP	1410	1-3/16", YOKE	YOKD60-1410-29S
	D60/D70	29	U-BOLT	1410	1-3/16", YOKE	YOKD60-1410-29U
Ford Van	D60/D70	29	N/A		COMPANION FLANGE	YOKD60-29-FLANGE
	D60/D70	29		7290	LRG (OBSOLETE), YOKE	YOKD60-7290-29
Toyota, International w/D60	D60	29	N/A		FLANGE	YOKD60-TOY-29
Dana Axles	D80		STRAP	1410	YOKE	YOKD80-1410-37S
	D80		STRAP	1480	YOKE	YOKD80-1480-37S



Yokes

FORD						
	10.25	31	STRAP	1350	SHORT SPLINE YOKE, 1992 & DOWN, STRAP	YOKF100601
	10.25	31	U-BOLT	1330	LONG SPL YOKE, 1993 & UP U-BOLT	YOKF100602
	10.25	31	STRAP	1350	LONG YOKE, 1993 & UP, STRAP	YOKF100603
	10.25	31	U-BOLT	1350	LONG YOKE, 1993 & UP, U-BOLT, FORGED	YOKF100603-UB
	10.25/10.5	31	STRAP	1410	SHORT SPLINE YOKE, 1992 & DOWN STRAP	YOKF100604
	10.25/10.5	31	STRAP	1410	LONG SPLINE YOKE, 1993 & UP STRAP	YOKF100605
	10.25/10.5	31	U-BOLT	1410	LONG SPLINE YOKE, 1993 & UP U-BOLT	YOKF100605-UB
	10.5	31	N/A		ROUND PINION YOKE, FLANGE (5.625" OD)	YOKF100606
	10.5	37	N/A		REAR PINION FLANGE	YOKF100607
	8.8	30	N/A		IFS TRK ROUND FLANGE (4.3" O.D.)	YOKF880600
	8.8	30		1330	PINION YOKE, TRUCK OR PASS	YOKF880601
	8.8	30	N/A		TRUCK ROUND YOKE (5" O.D.) FLANGE	YOKF880602
	8.8	30	N/A	1310	DRIVESHAFT FLANGE	YOKF880603
	8.8	30		1350	FORGED YOKE	YOKF880622
	8.8	30		1330	FORGED YOKE	YOKF880625
	8.8	30	U-BOLT	1310	FORGED YOKE, U-BOLTS INCL	YOKF880627
05 & UP MMustang w/ CV	8.8	30	N/A		PINION FLANGE	YOKF880631
	8/9/10.5		U-BOLT	1310/1330	U/BOLT KIT (2 U-BOLTS & 4 NUTS) ALSO 10.25"	YOKF9-1310-UBKIT
	9	28		1350	CAST YOKE, STEEL 3-7/8" OA LENGTH	YOKF9-1350-28C
	9	35		1350	BILLET YOKE, 4140 STEEL...	YOKF9-1350-35B
Stock Support w/ Daytona Yoke	9		N/A		YOKE SPACER	YOKF9-SPACER
	9	28		1330	YOKE, 4" LENGTH, 1-1/8" CAPS	YOKF900600
Stock support	9	28		1310	YOKE, 4" LENGTH	YOKF900601
	9	28		1330	YOKE, 5" LENGTH, 1-1/8" CAPS	YOKF900602
Daytona Support	9	28		1330	YOKE, 4" LENGTH, 1-1/8" CAPS	YOKF900603
	9	28		1310	YOKE, 4" LENGTH, FORGED	YOKF900604
Daytona Support	9	28		1350	YOKE, 4" LENGTH	YOKF900605
Daytona Support	9	28		1310	YOKE, 4" LENGTH, 4130 FORGED	YOKF900631
	9	35	N/A	1350	FORGED YOKE, STRONGER THAN BILLET	YOKF900663
	9.75	31			ROUND PINION YOKE FLANGE (5" OD)	YOKF975600
GM/CHEVY						
12P/12T & 63-74 Cast Iron Corvette	12P/12T, CI VETTE	30	U-BOLT	1310	YOKE	YOKGM12-1310U
	12P/12T	30		1350	ALUMINUM YOKE	YOKGM12-1350-A
	12P/12T	30	STRAP	1350	CAST YOKE, USES NS 8622 SEAL	YOKGM12-1350-C
	12P/12T	30		1350	FORGED YOKE	YOKGM12-1350-F
	8.5/12P/12T		STRAP	1310/1330	BOLT & STRAP KIT	YOKGM1310STRKIT
	14T/9.5		STRAP	1350/1410	BOLT & STRAP KIT	YOKGM1350STRKIT
	7.2				YOKE	YOKGM14039582
	14 Bolt 10.5	30	STRAP	1350	YOKE	YOKGM14T-1350-S
	14 Bolt 10.5	30	U-BOLT	1350	YOKE	YOKGM14T-1350-U
	14T/11.5	30	STRAP	1410	YOKE, (NOT COMMON) W/O STRAPS	YOKGM14T-1410-30S
	14 Bolt 10.5	30	U-BOLT	1410	YOKE	YOKGM14T-1410-U
	9.5	30	STRAP	1350	YOKE, USES GM3920486 STRAPS	YOKGM15579602
(Dana 5-795X)	8.5	30		M3R	USE YY	YOKGM15588336
	7.5	27		1350	PINION YOKE, ASTRO VAN, OUTSIDE CLIPS	YOKGM26006975
65-79 Cast Iron Corvette	12P/12T	30	STRAP	1330	YOKE, (DISCON. FROM GM)	YOKGM3879208
63-74 Cast Iron Corvette	12P/12T	30	STRAP	1310	YOKE	YOKGM3996118
	7.5/8.5		STRAP	M3R	REAR YOKE Strap Kit	YOKGM3RSTRKIT
	11.5/14T	30		1480	YOKE (W/ VIB. DAMPNER)	YOKGM40007479
Dana 5-795X	7.5/7.625/8	27		M3R	YOKE, INSIDE CLIPS, TRIPLE LIP DESIGN	YOKGM40015850
10+ Camaro V6	195MM		N/A		FLANGE	YOKGM40047372
10+ Camaro V8	218MM		N/A		FLANGE	YOKGM40081311
13+ Camaro ZL1	250MM		N/A		FLANGE	YOKGM4008189
	55P/55T	17	U-BOLT	1310	YOKE	YOKGM55-1310-17
	8.2	25	U-BOLT	1310	YOKE	YOKGM8.2-1310-25
(Dana 5-795X)	8.2	25	U-BOLT	M3R	YOKE	YOKGM8.2-3R
	8.5	30	U-BOLT	1310	8.5" GM 1310 PINION YOKE (U-BOLT)	YOKGM8.5-1310
	8.5/9.5	30	STRAP	1350	CAST YOKE	YOKGM8.5-1350-C
IFS (Need sleeve/ shield removed)	8.5/8.6/8.25/9.25	30		M3R	YOKE, INSIDE CLIPS	YOKGM8.5-M3R
63-79 Cast Iron Corvette		17			YOKE, INNER STUB AXLE	YOKGMVETSTUB-17S
63-79 Cast Iron Corvette		17			YOKE, INNER STUB AXLE	YOKGMVETSTUB-17U



Yokes

BUICK, OLDS, PONTIAC						
SLEEVE FOR CHEVY YOKE IN BOP DIFF	8.2		N/A		SLEEVE	YOKGM8.2-SLEEVE
(Dana 5-795X)	8.2/8.5 B.O.P.	27	U-BOLT	M3R	YOKE	YOKGM8.2BOP-3R
NISSAN						
	M226	24	N/A		Nissan Titan M226 Rear Pinion Flange 24 Spl	YOKM226-24
TOYOTA						
Dana Axle to Toyota Driveshaft	D30/D44/D50		N/A		PINION FLANGE (TOYOTA W/ DANA AXLE)	YOKD44-TOY-26
Tundra/ Tacoma/ T100/ Sequoia 04 & Down	8.4	30	N/A		Rear Flange/Yoke, 60mm x 60mm Pattern	YOKT34010
Tundra/ Tacoma/ T100/ Sequoia 05+	8.4	30	N/A		Rear Flange/Yoke, 66mm x 66mm Pattern	YOKT34030
69-78 Land Cruiser	9.5	27	N/A		68.5x60mm & 64x56mm	YOKT35021
84 & UP 8" STD & REV LC/PU/4Runner	8 'V6'	27	N/A		10MM BOLT HOLES, 60 x 60 (COMMON)	YOKT35040
Various 8" 79-02 (Universal)	8 'V6'	27	N/A		Yoke/Flange, 12 Holes	YOKT35040-MULTI
03+ Toyota pinion Flange all Models 29 Spline	8	29	N/A		YOKE, 66X66 & 60X60	YOKT35100-MULTI
29 Spline Upgrade Fit Kit For 02 & Older	8	29	NA		66X66 & 60X60 Includes Seal & Nut	YOKTOYFIT-29
Toyota 84-04 Drive-shaft Flange			N/A		Driveshaft Flange 60 X 60	YOKT38000
07 & up Tundra 5.7L	10.5		N/A	1350	DRIVESHAFT FLANGE	YOKT5004010
05 & up Tacoma			N/A	1330	DRIVESHAFT FLANGE	YOKT5004020
78-02 LC & Late Model 8" W/27 Spline	8	27	N/A		66X66 & 60X68 PATTERNS	YOKT60030
08+ Land Cruiser 07+ Tundra 4.6/4.7L	9.5	32	N/A		Flange, 66x66	YOKT60060
Fit Kit, TLC100-XXX-NG Into 07+ 4.6/4.7 Tundra	9.5	29	N/A		Driveshaft Flange, Yoke, Adapter U-Joint	YOKTUNDRA9.5
TRANSFER CASE YOKES						
	NP205 T-CASE	32	STRAP	1310	YOKE	YOKNP205-1310-32
	NP205 T-CASE	10	STRAP	1350	YOKE	YOKNP205-1350-10
	NP205 T-CASE	32	STRAP	1350	YOKE	YOKNP205-1350-32
	NP203 T-CASE	32	STRAP	1410	YOKE, Stak & Atlas	YOKNP205-1410-32S
	NP203/205 T-CASE	32	U-BOLT	1410	YOKE, Stak & Atlas	YOKNP205-1410-32U
Jeep Rubicon	NP241 T-CASE	32		1310	YOKE, 1.876" SEAL DIA	YOKNP241OR-1310-32
Jeep Rubicon	NP241 T-CASE	32		1330	YOKE, 1.876" SEAL DIA	YOKNP241OR-1330-32



Aluminum Diff. Covers & Bolt Kits

Application	Front or Rear	Description	Cover Bolts	Part Number
AAM				
AAM 11.5"	Rear	Nitro Xtreme Alum Differential Cover	14	NPCOVER-AAM11.5
AMC				
AMC Model 20	Rear	Nitro Xtreme Alum Differential Cover	12	NPCOVER-M20
	Rear	Finned Alum Differential Cover	12	NPC2-M20
CHRYSLER				
Chrysler 9.25"	Rear	Nitro HD Aluminum Girdle Cover	12	NP1818
Chrysler 9.25"	Rear	Nitro Xtreme Alum Differential Cover	12	NPCOVER-C9.25
Chrysler 8.25"	Rear	Nitro Xtreme Alum Differential Cover	10	NPCOVER-C8.25
DANA				
DANA 35 (M35)	Rear	Nitro Xtreme Alum Differential Cover	10	NPCOVER-M35
DANA 35 (M35)	Rear	Nitro HD Aluminum Girdle Cover	10	NP1817
D44 NITRO Xtreme	Rear	Nitro Xtreme Alum Differential Cover	10	NPCOVER-D44
D44 NITRO	Rear	Nitro HD Aluminum Girdle Cover*	10	NP1814
D60, D61 & 70 Nitro Xtreme	Rear	Nitro Xtreme Alum Differential Cover	10	NPCOVER-D60
D60, D61 & 70 Nitro Xtreme Black	Rear	Nitro Xtreme Alum Differential Cover	10	NPCOVERD60-2
D60 & D61 Nitro	Rear	Nitro HD Aluminum Girdle Cover*	10	NP1812
D70 NITRO	Rear	Nitro HD Aluminum Girdle Cover*	10	NP1813
8.8" Ford	Rear	Nitro HD Aluminum Girdle Cover	10	NP1806
FORD				
10.25 & 10.5" Ford	Rear	Nitro Finned Alum Cover	12	NPCOVER-F10.25
9.75" Ford	Rear	Nitro Finned Alum Cover Black	12	NPCOVER-F9.75
9.75" Ford	Rear	Nitro HD Aluminum Girdle Cover*	12	NP1804
7.5" Ford	Rear	Nitro HD Aluminum Girdle Cover*	10	NP1805
8.8" Ford	Rear	Nitro Xtreme Alum Differential Cover	10	NPCOVER-F8.8
8.8" Ford	Rear	Nitro HD Aluminum Girdle Cover*	10	NP1806
Ford 7.5", 8.8", 9", 10.25", D44, D60, D70, C8.75", C9.25"		Main Cap Stud Kit		NP1816
GM				
Chevy 55T	Rear	Nitro HD Aluminum Girdle Cover*	12	NPCOVER-TLC
8.2", 8.5" & 8.6" Steel Cover with bolts and gasket	Rear	Stock Type Steel Cover	10	GM8.5-COVER-KIT
8.2" & 8.5" GM	Rear	Nitro HD Aluminum Girdle Cover*	10	NP1807
8.2 & 8.5 Nitro Finned Alum Cover	Rear	Nitro Finned Alum Cover	10	NPCOVER-GM8.5
7.5" & 7.625" (7.5)	Rear	Nitro HD Aluminum Girdle Cover*	10	NP1809
12P 8.875 Passenger Car	Rear	Nitro HD Aluminum Girdle Cover*	12	NP1810
12T 8.875 Truck	Rear	Nitro HD Aluminum Girdle Cover*	12	NP1811
GM 7.5", 7.625", 8.5", 12P, & 12T		Main Cap Stud Kit		NP1815
GM 9.5" 14 Bolt Semi Float	Rear	Nitro HD Aluminum Girdle Cover*	14	NP1803
GM 9.5" 14 Bolt Semi Float		Main Cap Stud Kit		NP1803-SK
GM 10.5" 14 Bolt Full Float	Rear	Steel Cover With Gasket & Bolts	14	GM14TCOVER-KIT
GM 10.5" 14 Bolt Full Float	Rear	Finned Alum Diff Cover	14	NPCOVER-GM10.5
GM 10.5" 14 Bolt Full Float	Rear	Nitro Xtreme Alum Differential Cover	14	NPCOVER-14T
Borg Warner 7.75" 9 Bolt	Rear	Nitro HD Aluminum Girdle Cover*	9	NP1802
Borg Warner 7.75" 9 Bolt	Rear	Main Cap Stud Kit	9	NP1802-SK
BUICK, OLDSMOBILE, PONTIAC				
8.2" BOP	Rear	Nitro HD Aluminum Girdle Cover*	10	NP1808
8.2" BOP	Rear	Main Cap Stud Kit		NP1815A
TOYOTA				
Toyota 9.5" Land Cruiser S/F	Rear	Nitro Xtreme Alum Differential Cover		NPCOVER-TLC

*Girdle Covers include allen bolts for cap support.



Solid Spacers & Shim Kits*

Application	Model	Part Number
FORD		
SOLID PINION PRELOAD SPACER	7.5, 8.8, 9	SKCSF9-STD
SOLID PINION PRELOAD SPACER	8	SKCSM35
SOLID PINION PRELOAD SPACER & SHIM KIT	7.5, 8.8, 9	SKCSF9-STD
LARGE SOLID PINION PRELOAD SPACER & SHIM KIT	9	SKCSF9-BIGPIN
PINION SHIM KIT	8	SK8F
PINION SHIM KIT	9	SK9F
BILLET PINION SHIM KIT	10	SKF10-BILLET
INTERLOCKING CARRIER SHIM KIT	7.5	SKSS501314
CARRIER SHIM KIT	9.5	SKCCGM9.5
CARRIER SUPER SHIM KIT	8.8	SKSS603012
CARRIER SUPER SHIM KIT	9.75	SKSSF9.75
CARRIER SUPER SHIM KIT	10.25, 10.5	SKSSF10.25
ECONOMY CARRIER SHIM KIT	8.8	SKCC12
ECONOMY CARRIER SHIM KIT	9.75	SKCCF9.75
TRAC LOK SHIM .006	8, 9	SKF9TL1
TRAC LOK SHIM .010	8, 9	SKF9TL2
TRAC LOK SHIM .020	8, 9	SKF9TL3



Application	Model	Part Number
DANA		
SOLID PINION PRELOAD SPACER & SHIM KIT	D44HD	SKCSD44HD
SOLID PINION PRELOAD SPACER	M35	SKCSM35
CARRIER SHIM KIT	D44HD	SKD44HD
CARRIER SHIM KIT	M35, D30 JK	SKCCM35
CARRIER SHIM KIT (INCL 10 SHIMS)	M20	SKCCT7.5-SIDE
CARRIER SUPER SHIM KIT	M35	SKSSM35
AXLE END PLAY SHIM .005"	M20	SKM20-5
AXLE END PLAY SHIM .003"	M20	SKM20-3
TOYOTA		
SOLID PINION PRELOAD SPACER	T100	SKCST100
SOLID PINION PRELOAD SPACER	8 Clamshell	SKCST8S-CLAM
SOLID PINION PRELOAD SPACER '4 Cylinder Housing'	8	SKCST8
SOLID PINION PRELOAD SPACER	7.5, 7.5 Rev	SKCST7.5
SOLID PINION PRELOAD SPACER	10.5	TOY41231-34030
SOLID PINION PRELOAD SPACER	9.5	SKCSTLC90+
SOLID PINION PRELOAD SPACER	9.5	SKCSTLC-PRE90
SOLID PINION PRELOAD SPACER 'V6 Reinforced Housing'	8	SKCSTV6
PINION SHIM KIT	8	SKT8
CARRIER SHIM KIT	9 Rev, 10.5	SKCCT10.5
CARRIER SHIM KIT (INCL 10 SHIMS) V6 & 4 CYL	7.5	SKCCT7.5-SIDE

Application	Model	Part Number
GM		
SOLID PINION PRELOAD SPACER	12P	SKCSGM12P
SOLID PINION PRELOAD SPACER	12T	SKCSGM12T
SOLID PINION PRELOAD SPACER W/AFTERMARKET R&P ONLY	7.5, 8.2	SKCSGM7.5
SOLID PINION PRELOAD SPACER	8.5	SKCSGM8.5
SOLID PINION PRELOAD SPACER 1963-1979 Corvette	CAST IRON	SKCSGMCIVET
PINION SHIM KIT	7.5, 8.2, 12T	SKT8
PINION SHIM KIT	14T	SKGM14T
PINION SHIM KIT	9.5, 10.25	SKGM9.5
PINION SHIM KIT	7.75 Borg Warner	SKT8
INTERLOCKING CARRIER SHIM KIT	7.5, 8.2, 8.5	SKSS501314
CARRIER SUPER SHIM KIT	8.6	SKSS603012
CARRIER SUPER SHIM KIT	12P, 12T	SKSS603012
CARRIER SHIM KIT	7.75 Borg Warner	SKCCM35
CARRIER SUPER SHIM KIT 1963-1979 Corvette	CAST IRON	SKSS603012
CARRIER SUPER SHIM KIT	9.5	SKSSGM9.5
ECONOMY CARRIER SHIM KIT	12P, 12T	SKCC12
ECONOMY CARRIER SHIM KIT	8.6	SKCC12
ECONOMY CARRIER SHIM KIT 1963-1979 Corvette	CAST IRON	SKCC12
BUICK, OLDS, PONTIAC		
CARRIER SUPER SHIM KIT	8.2 B.O.P.	SKSSM35
CARRIER SHIM KIT	8.2 B.O.P.	SKCCM35
CHRYSLER		
SOLID PINION PRELOAD SPACER	9.25	SKCSGM8.5
SOLID PINION PRELOAD SPACER & SHIM KIT	8.75 (489)	SKCSC8.75
PINION SHIM KIT	8.75 (742,489), 9.25	SKGM9.5
PINION SHIM KIT	8.75 (741)	SKT8
MAZDA		
PINION SHIM KIT	MAZDA TRUCK	SKT8

*Solid Spacer - Replaces Crush Sleeve with a Solid Spacer and Shims to set Pinion Preload
 Super Shims - Different Thickness Shims that Interlock to make one Solid Thickness Shim
 Economy Shims- Individual Shims in Different thickness that get stacked together





Wheel Spacers

Application	Part Number
12MM X 1.5 Open End Lug Nut	JTO12X1.5-LUG
Toyota Rear Axle 12MM Wheel Stud	JTO12x1.5-STUD
14MM X 1.5 Open End Low-Profile Conical Lugnut	JTO14X1.5LUG
Wheel Spacer Kit, 1.25" 5X4.5 To 5X5.5	JTO5LUGADA-1.25
Wheel Spacer Kit, 1.50" 5X4.5 To 5X5.5t	JTO5LUGADA-1.5
Wheel Adaptor 1.25" 5X4.5 to 5X5 - Run JK wheels on TJ - Pair	JTO5LUGADA-JK-1.25
Wheel Adaptor 2" 5X4.5 to 5X5 - Run JK wheels on TJ - Pair	JTO5LUGADA-JK-2
Wheel Spacer Kit Ford 1-1/2", 5 X 135MM	JTO5X135-1.5
Wheel Spacer Kit Ford 2", 5 X 135MM Hub Centric	JTO5X135-2.0
Wheel Spacer Kit, 1.0", 5X150MM, 14MM Studs (1998+ Land Cruiser, 2007+ Tundra)	JTO5X150-1.0
Wheel Spacer Kit, 1.25", 5X150MM, 14MM Studs (1998+ Land Cruiser, 2007+ Tundra)	JTO5X150-1.25
Wheel Spacer Kit, 1.5", 5X150MM, 14MM Studs (1998+ Land Cruiser, 2007+ Tundra)	JTO5X150-1.5
Wheel Spacer Kit, 1.25" 5X4.5 Jeep ZJ, TJ, XJ, YJ	JTO5X4.5-1.25
Wheel Spacer Kit, 1.50" 5X4.5 Jeep ZJ, TJ, XJ, YJ	JTO5X4.5-1.5
Wheel Spacer Kit, 2.0" 5X4.5 Jeep ZJ, TJ, XJ, YJ	JTO5X4.5-2.0
Wheel Spacer Kit, 1", 5X4.75"	JTO5X4.75-1.0
Wheel Spacer Kit, 1.5", 5X4.75"	JTO5X4.75-1.5
Wheel Spacer Kit, 1.25" 5X5"	JTO5X5-1.25
Wheel Spacer Kit, 1.25" 5X5" Hub Centric	JTO5X5-1.25HC
Wheel Spacer Kit, 1.5" 5X5"	JTO5X5-1.5
Wheel Spacer Kit, 2" 5X5"	JTO5X5-2.0
Wheel Spacer Kit, 2" 5X5" Hub Centric	JTO5X5-2.0HC
Wheel Spacer Kit, 1.25" 5X5.5"	JTO5X5.5-1.25
Wheel Spacer Kit, 1.50" 5X5.5"	JTO5X5.5-1.5
Wheel Spacer Kit, 2" 5X5.5	JTO5X5.5-2.0
Wheel Spacer Kit, 3" 5X5.5	JTO5X5.5-3.0
Wheel Spacer Kit, 1.5" 5X6.5" Rover	JTO5X6.5-1.5
Wheel Spacer Kit, 1.00" 6X5.5	JTO6LUG-1.0
Wheel Spacer Kit, 1.25" 6X5.5	JTO6LUG-1.25
Wheel Spacer Kit, 1.25" 6X5.5, Hubcentric	JTO6LUG-1.25HC
Wheel Spacer Kit, 1.5" 6X5.5	JTO6LUG-1.5
Wheel Spacer Kit, 1.5" 6X5.5, W/ 12MM X1.25" Pitch For Nissan Hardbody, Titan, 720 etc.	JTO6LUG-1.5-NIS
Wheel Spacer Kit, 1.5" 6X5.5, Hubcentric	JTO6LUG-1.5HC
Wheel Spacer Kit, 2.0" 6X5.5"	JTO6LUG-2.0
Wheel Spacer Kit, 3.0" 6X5.5"	JTO6LUG-3.0
Ford F150 6 X 135MM 1.5" Wheel Spacers	JTO6X135-1.5
Ford F150 6 X 135MM 2" Wheel Spacers	JTO6X135-2.0
6X4.5" Wheel Spacers (Dodge Durango/Dakota & Nissan Frontier) - Pair	JTO6X4.5-1.5
8 X 170MM Wheel Spacer, 1.5" Thick, 14MM X 2.0 Studs (Ford Super Duty)	JTO8X170-1.5
8 X 170MM Wheel Spacer, 2.0" Thick, 14MM X 1.5 Studs (Ford Super Duty)	JTO8X170-2.0
8 X 170MM Wheel Spacer, 2.5" Thick, 14MM X 1.5 Studs (Ford Super Duty)	JTO8X170-2.5
8 X 170MM To 8 X 6.5", 1.5" Wheel Spacers, 14X1.5 Studs	JTO8X170ADA-1.5
8 X 6.5" Wheel Spacers 1.5" Thick, 9/16-18	JTO8X6.5-1.5
8 X 6.5" Wheel Spacers 1.5", 14 X 1.5 Studs (Pair)	JTO8X6.5-1.5-MET
8 X 6.5" Wheel Spacers 2.0", 9/16 Std Studs (Pair)	JTO8X6.5-2.0
8 X 6.5" Wheel Spacers 2.0", 14 X 1.5 Studs (Pair)	JTO8X6.5-2.0-MET
8 X 6.5" Wheel Spacers 3.0", 9/16 Std Studs (Pair)	JTO8X6.5-3.0
8 X 6.5" To 8 X 170MM 1.5" Wheel Spacers	JTO8X6.5ADA-1.5



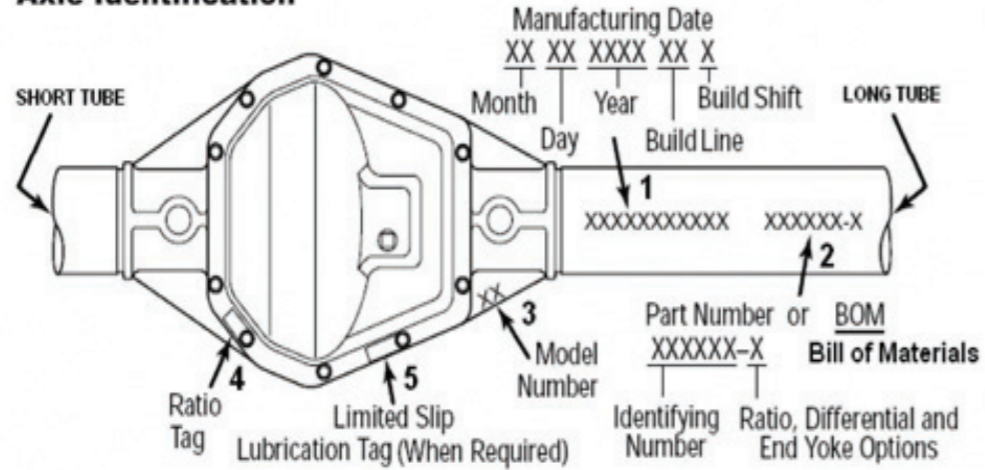
Tools

Part	Part Number
TOYOTA SPANNER TOOL	TLSA04
D60 KING PIN REMOVAL TOOL	TLSA05
CHRYSLER 7.25", 8.25", & 9.25" SIDE ADJUSTER TOOL	TLSA06
GM 8.25" IFS ADJUSTER TOOL	TLSA08
Spanner Wrench for AAM 9.25", 10.5", 11.5", GM 9.5", 14T	TLSAAM-ADJ
3RD MEMBER BENCH ASSBLY FIXTURE (360 DEGREE ROT)	TLSB01
BROKEN X/PIN BOLT REMOVAL TOOL	TLSBCSBR
FRONT BEARING RACE DRIVER TOY V6, TLC-REV, TACOMA	TLSBD-30025
FRONT BEARING RACE DRIVER TOY 7.5", 8", LC, SAMURAI	TLSBD-30306
REAR BEARING RACE DRIVER TOY 7.5" & 8"	TLSBD-32307
REAR BEARING RACE DRIVER TOY V6, TLC-REV, & TACOMA-LOC	TLSBD-35028
BEARING RACE DRIVER (For Race HM89410 & Others)	TLSBD-HM89410
BEARING RACE DRIVER (For Race M802011 & Others)	TLSBD-M802011
BEARING RACE DRIVER (For Race M804010 & Others)	TLSBD-M804010
BEARING RACE DRIVER For Race M86610 & Others)	TLSBD-M86610
BEARING RACE DRIVER (For Race M88010 & Others)	TLSBD-M88010
6" DIGITAL CALIPERS	TLSCALIPER
DEPTH SETTING TOOL/GAUGE	TLSD02
DIAL INDICATOR & STAND	TLSM02
PINION BRG INCH LB TORQUE WRENCH PRELOAD TOOL	TLSM10
RC-45 SMALL RED CLAMSHELLS (2 PC) FOR BRG PULLER	TLSP03
CLAMSHELL RETENSION SLEEVE, FOR PULLER TOOL	TLSP09
BEARING SEPARATOR, PINION BRG SPLITTER	TLSP41
LRG CLAMSHELLS FOR D70HD, D80, 10.25F SIDE BEARINGS	TLSP45
SIDE BEARING PULLER TOOL, DIFFERENTIAL. CLAMSHELL TYPE D70 & SMALLER	TLSP47
SIDE BEARING PULLER TOOL W/ LRG CLAMSHELL, DIFFERENTIAL	TLSP49
AXLE BEARING PULLER TOOL -CLAMSHELL STYLE	TLSP70
AXLE BEARING PULLER TOOL PLATE STYLE TOYOTA'S	TLSP71
HOUSING SPREADER, D44, D60,D61,D70,D80	TLSS01

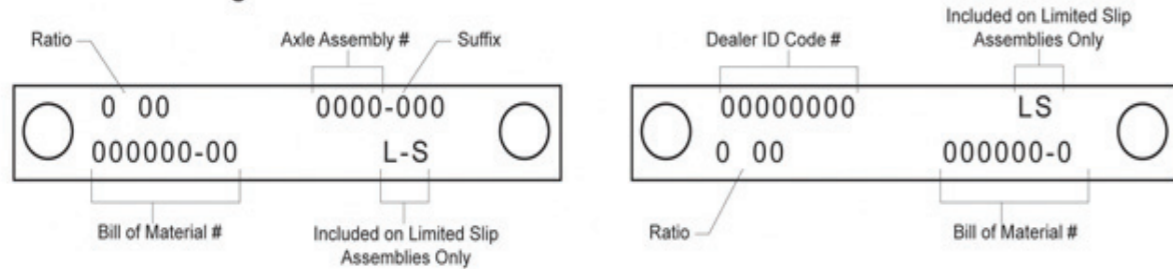


DANA BOM Placement and Identification

Axle Identification



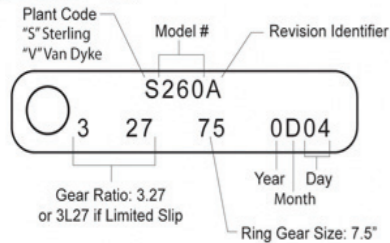
Dana Differential Tags



BOM is used to Identify axle type, model number and gear ratio, the manufacturing date is less important. Passenger side axle tube. **BOM:**

Ford Tag Identification

Ford Differential Tag



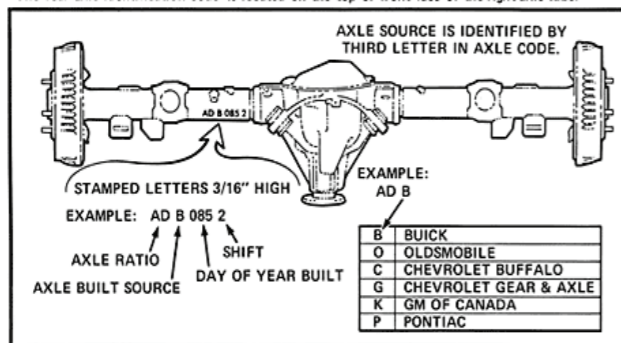
Ford month of manufacture is indicated with a letter, i.e. January =A, February = B, March =C, etc.

'Ring gear size' refers to diameter.

No letter code in the gear ratio denotes an open differential.

GM Axle Identification

The rear axle identification code is located on the top or front face of the right axle tube.



Regular Production Order Codes

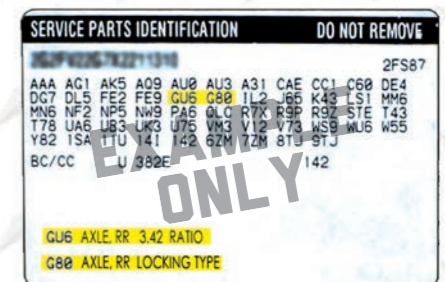
RPO Code	Description	Ratio	RPO Code	Description	Ratio
F16	TFD	2.53	GH2	Axle Rear	2.29
F17	TFD	2.84	GH3	Axle Rear	2.77
F18	TFD	2.65	GH4	Axle Rear	2.92
F25	TFD	3.32	GH7	Axle Rear	2.73
F29	TFD	2.82	GJ1	Axle Rear	5.38
F36	Axle Front	2.19	GJ2	Axle Rear	5.13
F45	Axle Front	2.93	GK7	Axle Rear	4.78
F47	Axle Front	2.73	GK8	Axle Rear	4.33
F57	Axle Front	3.15	GK9	Axle Rear	4.63
F62	TFD	2.39	GL0	Axle Rear	5.13
F67	TFD	3.19	GL3	Axle Rear	6.17
F68	TFD	3.45	GM1	Axle Rear	2.59
F75	TFD	3.18	GM2	Axle Rear	3.44
F77	TFD	3.73	GM3	Axle Rear	3.45
F79	TFD	2.97	GM4	Axle Rear	3.67
F82	TFD	3.23	GM5	Axle Rear	3.89
F83	TFD	3.05	GM6	Axle Rear	4.22
F90	Axle Front	2.73	GM7	Axle Rear	3.68
FA0	Rear	5.77	GM8	Axle Rear	2.56
FA1	Rear 2 Speed	4.88/6.94	GN9	Axle Rear	4.11
FA2	Rear 2 Speed	4.88/6.94	GS1	Axle Rear	2.73
FH5	TFD	2.81	GS3	Axle Rear	3.73
FH6	Axle Front	3.64	GS4	Axle Rear	3.7
FH7	TFD	4.12	GS5	Axle Rear	4.11
FH8	Axle Front	2.4	GS6	Axle Rear	4.56
FH9	TFD	2.6	GS8	Axle Rear	3.94
FJ1	Axle Front	4.18	GT1	Axle Rear	2.56
FJ2	Axle Front	3.74	GT2	Axle Rear	2.29
FJ3	TFD	3.35	GT4	Axle Rear (Dup of 5X1)	3.73
FJ4	Axle Front	4.53	GT5	Axle Rear (Dup of GT8)	4.1
FJ5	Axle Front	4.19	GT7	Axle Rear	3.33
FJ7	Axle Front	4.56	GT8	Axle Rear (Dup of GT5)	4.1
FP0	TFD	2.55	GU1	Axle Rear	2.41
FP1	TFD	2.72	GU2	Axle Rear	2.73
FP2	TFD	3.58	GU3	Axle Rear	2.93
FP3	TFD	2.73	GU4	Axle Rear	3.08
FP4	TFD	2.69	GU5	Axle Rear	3.23
FP5	TFD	2.95	GU6	Axle Rear	3.42
FP6	TFD	3.54	GU7	Axle Rear	2.77
FP7	TFD	3.73	GU8	Axle Rear	3.9
FP8	TFD	3.54	GU9	Axle Rear	3.91
FP9	TFD	3.54	GV0	Axle Rear	3.55
FQ2	TFD	3.48	GV1	Axle Rear	2.73
FQ3	TFD	2.86	GV2	Axle Rear	5.83
FQ4	TFD	3.57	GV3	Axle Rear	3.08
FQ6	TFD	4.12	GV4	Axle Rear	3.36
FQ8	TFD	2.96	GV5	Axle Rear	3.55
FQ9	TFD	3.21	GV7	Axle Rear	4.11
FR2	TFD	2.93	GV8	Axle Rear	2.72
FR3	TFD	3.69	GV9	Axle Rear	4.25
FR6	TFD	3.84	GW2	Axle Rear	2.56
FR7	TFD	3.95	GW3	Axle Rear	2.56
FR8	Axle Front	4.17	GW4	Axle Rear	3.31
FR9	TFD	3.29	GW5	Axle Rear	2.73
FV0	TFD	3.67	GW6	Axle Rear	3.27
FV1	TFD	3.72	GW8	Axle Rear	4.1
FV2	TFD	4.18	GW9	Axle Rear (Dup of GU3)	2.93
FV3	TFD	3.11	GX1	Axle Rear	3.7
FV4	TFD	3.71	GX2	Axle Rear	3.07
FV5	TFD	4.19	GX3	TFD	3.33
FV6	TFD	4.24	GX4	Axle Rear	3.75
FV7	TFD	4.29	GX5	Axle Rear	4.09
FV8	TFD	4.31	GX6	Axle Rear	3.53

FV9	TFD	4.53	GX8	TFD	3.74
FV0	TFD	3.67	GY2	Axle Rear	3.31
FW2	TFD	3.06	GY3	TFD	4.29
FW3	TFD	4.02	GY4	Axle Rear	4.53
FW4	TFD	3.89	GY5	Axle Front	3.65
FW5	TFD	4.1	GY7	TFD	4.18
FW6	TFD	3.42	GY9	Axle Rear	4.31
FW7	TFD	3.83	GS	TFD	3.65
FW8	TFD	4.28	H01	Axle Rear	3.07
FW9	TFD	3.43	H04	Axle Rear, Single Speed	4.11
FWS	TFD	4.1	H05	Axle Rear	3.73
FX1	TFD	3.94	H12	Axle Rear, 21000 Lbs, Eaton 21065S, Single Speed	
FX2	TFD	2.66	H42	Axle Rear	6.17
FX4	TFD	3.35	H43	Axle Rear	5.43
FX8	TFD	3.61	HA3	Axle Rear, Single Speed	5.29
FY1	TFD	2.36	HC4	Axle Rear	4.56
FY3	TFD	3.79	HC7	Axle Rear, 7500 Lbs, Single Speed	2.38
FY5	TFD	3.52	HC8	Axle Rear, Single Speed, Truck	3.21
G11	TFD	2.56	HC9	Axle Rear	5.13
G44	Axle Rear	3.07	HE3	Axle Rear, 3500 Lbs, Single Speed	3.07
G72	Axle Rear	2.14	HE4	Axle Rear	3.4
G75	Axle Rear	3.62	HF7	Axle Rear, 10000 Lbs, Dana 70, Single	4.56
G76	Positraction Rear		HF8	Axle Rear	4.88
G80	Axle Positraction, Limited Slip		HJ1	Axle Rear	4.55
G81	Positraction Rear Axle		HJ2	Axle Rear	5.86
G82	Axle Rear	4.56	HJ3	Axle Rear	4.75
G84	Axle Rear	4.1	HJ4	Axle Rear	6.5
G86	Axle Rear, Limited Slip		HJ5	Axle Rear	5.57
G87	Ring Gear, 8.5"		HJ6	Axle Rear	4.78
G89	Ring Gear, 7.5"		HJ7	Axle Rear	4.88
G90	Rear	3.15	HK1	Axle Rear	2.87
G91	Special Highway Rear Axle	3.08	HK3	Axle Rear	6.14
G94	Axle Rear	3.31	HK9	Axle Rear 10000 Lbs, Single Spd	5.86
G96	Axle Rear	3.55	HO4	Axle Rear	4.11
G97	Axle Rear	2.73	HO6	Axle Rear	4.63
GH0	Axle Rear	3.54			

Check your vehicles "Service Parts Identification" placard, usually located inside the glove box or inside the drivers door panel.

Prefixes F, G and H typically refer to the vehicles original, unmodified axle type and gear ratio.

The codes listed above are a sample of those most frequently used.



RING GEAR AND PINION TEETH RATIO CHART

		PINION TEETH																			
		5	6	7	8	9	10	11	12	13	14	15									
RING	21	4.20	3.50	3.00	2.63																
	22	4.40	3.67	3.14	2.75	2.44															
	23	4.60	3.83	3.29	2.88	2.56															
	24	4.80	4.00	3.43	3.00	2.67	2.40														
	25	5.00	4.17	3.57	3.13	2.78	2.50														
	26	5.20	4.33	3.71	3.25	2.89	2.60														
	27	5.40	4.50	3.86	3.38	3.00	2.70	2.45													
	28	5.60	4.67	4.00	3.50	3.11	2.80	2.55													
	29	5.80	4.83	4.14	3.63	3.22	2.90	2.64	2.42												
	30	6.00	5.00	4.29	3.75	3.33	3.00	2.73	2.50												
	31	6.20	5.17	4.43	3.88	3.44	3.10	2.82	2.58												
	32	6.40	5.33	4.57	4.00	3.56	3.20	2.91	2.67	2.46											
	33	6.60	5.50	4.71	4.13	3.67	3.30	3.00	2.75	2.54											
	34	6.80	5.67	4.86	4.25	3.78	3.40	3.09	2.83	2.62	2.43										
	35	7.00	5.83	5.00	4.38	3.89	3.50	3.18	2.92	2.69	2.50										
	36	7.20	6.00	5.14	4.50	4.00	3.60	3.27	3.00	2.77	2.57	2.40									
	37	7.40	6.17	5.29	4.63	4.11	3.70	3.36	3.08	2.85	2.64	2.47									
	38	7.60	6.33	5.43	4.75	4.22	3.80	3.45	3.17	2.92	2.71	2.53									
	39	7.80	6.50	5.57	4.88	4.33	3.90	3.55	3.25	3.00	2.79	2.60									
	40		6.67	5.71	5.00	4.44	4.00	3.64	3.33	3.08	2.86	2.67									
	41		6.83	5.86	5.13	4.56	4.10	3.73	3.42	3.15	2.93	2.73									
42		7.00	6.00	5.25	4.67	4.20	3.82	3.50	3.23	3.00	2.80										
43		7.17	6.14	5.38	4.78	4.30	3.91	3.58	3.31	3.07	2.87										
44		7.33	6.29	5.50	4.89	4.40	4.00	3.67	3.38	3.14	2.93										
45		7.50	6.43	5.63	5.00	4.50	4.09	3.75	3.46	3.21	3.00										
46		7.67	6.57	5.75	5.11	4.60	4.18	3.83	3.54	3.29	3.07										
47			6.71	5.88	5.22	4.70	4.27	3.92	3.62	3.36	3.13										
48			6.86	6.00	5.33	4.80	4.36	4.00	3.69	3.43	3.20										
49			7.00	6.13	5.44	4.90	4.45	4.08	3.77	3.50	3.27										
50			7.14	6.25	5.56	5.00	4.55	4.17	3.85	3.57	3.33										
51			7.29	6.38	5.67	5.10	4.64	4.25	3.92	3.64	3.40										
52			7.43	6.50	5.78	5.20	4.73	4.33	4.00	3.71	3.47										
53			7.57	6.63	5.89	5.30	4.82	4.42	4.08	3.79	3.53										

RPM AT 65 MPH		TIRE SIZE												
		27"	28"	29"	30"	31"	32"	33"	34"	35"	36"	37"	38"	39"
2.73	2,208	2,129	2,056	1,987	1,923	1,863	1,807	1,754	1,704	1,656	1,611	1,569	1,529	1,491
2.94	2,378	2,293	2,214	2,140	2,071	2,007	1,946	1,889	1,835	1,784	1,735	1,690	1,646	1,605
3.07	2,483	2,395	2,312	2,235	2,163	2,095	2,032	1,972	1,916	1,862	1,812	1,764	1,719	1,676
3.21	2,597	2,504	2,417	2,337	2,261	2,191	2,124	2,062	2,003	1,947	1,895	1,845	1,798	1,753
3.31	2,677	2,582	2,493	2,410	2,332	2,259	2,191	2,126	2,065	2,008	1,954	1,902	1,854	1,807
3.42	2,766	2,668	2,576	2,490	2,409	2,334	2,263	2,197	2,134	2,075	2,019	1,966	1,915	1,867
3.55	2,872	2,769	2,674	2,584	2,501	2,423	2,349	2,280	2,215	2,154	2,095	2,040	1,988	1,938
3.73	3,017	2,909	2,809	2,715	2,628	2,546	2,469	2,396	2,328	2,263	2,202	2,144	2,089	2,037
3.91	3,163	3,050	2,945	2,846	2,755	2,669	2,588	2,512	2,440	2,372	2,308	2,247	2,190	2,135
4.11	3,325	3,206	3,095	2,992	2,896	2,805	2,720	2,640	2,565	2,493	2,426	2,362	2,302	2,244
4.27	3,454	3,331	3,216	3,109	3,008	2,914	2,826	2,743	2,664	2,590	2,520	2,454	2,391	2,331
4.56	3,689	3,557	3,434	3,320	3,213	3,112	3,018	2,929	2,845	2,766	2,692	2,621	2,554	2,490
4.88	3,947	3,806	3,675	3,553	3,438	3,331	3,230	3,135	3,045	2,961	2,881	2,805	2,733	2,664
5.13	4,150	4,001	3,863	3,735	3,614	3,501	3,395	3,295	3,201	3,112	3,028	2,948	2,873	2,801
5.38	4,352	4,196	4,052	3,917	3,790	3,672	3,561	3,456	3,357	3,264	3,176	3,092	3,013	2,937
5.56	4,497	4,337	4,187	4,048	3,917	3,795	3,680	3,571	3,469	3,373	3,282	3,196	3,114	3,036

** Chart assumes a manual transmission and a final drive ratio of 1-1, multiply by O.D. Ratio for RPM (example rpm x .70)

Ratio=	$\frac{\text{RPM} \times \text{Tire Diameter}}{\text{MPH} \times 336}$
MPH=	$\frac{\text{RPM} \times \text{Tire Diameter}}{\text{Gear Ratio} \times 336}$
RPM=	$\frac{\text{MPH} \times \text{Gear Ratio} \times 336}{\text{Tire Diameter}}$
Tire Diameter=	$\frac{\text{MPH} \times \text{Gear Ratio} \times 336}{\text{RPM}}$

Recommended RPM @ 60mph	
4 cyl	2200-3200
6 cyl	2000-3000
small block	1800-2800
big block	1600-2600
GM diesel 6.2L	1800-2800
Ford diesel (non-turbo)	1600-2500
Ford diesel (turbo)	1400-2200
Dodge diesel	1400-2200



Black Nitro T-Shirt



Black Nitro Hat



Grey Nitro Hat



Nitro Sweatshirt



Nitro Coozie



Nitro Track Mat

If you're looking for quality performance driveline & axles, visit our website.