

HOW TO USE:



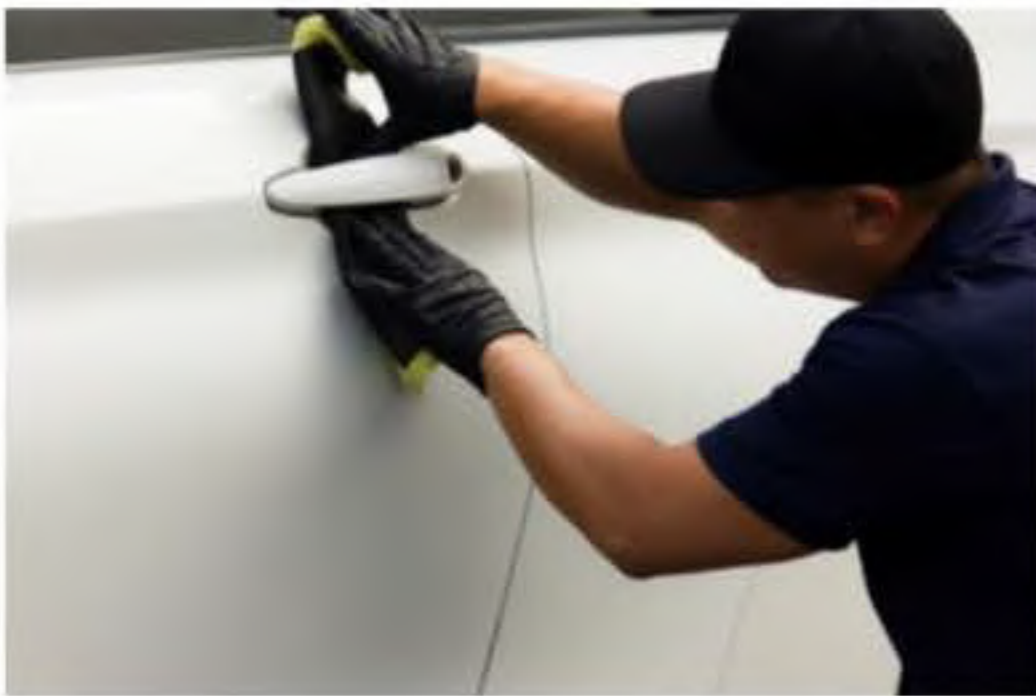
Step 1:
Spray sufficient amount of lubricant on the paint or glass surface.
NOTE: Do not allow the lubricant to run dry on the surface.



Step 2:
Slide Autoscrub across the lubricated surface in a back and forth motion with light to medium pressure.
NOTE: Work in a 12" x 12" area at a time. Do not allow lubricant to dry on the surface.



Regularly fold Autoscrub towel for a fresh surface to continue or restart decontamination.



Use Autoscrub towel for hard to reach areas.



Step 3:
Wipe and buff dry residual lubricant off the surface using light pressure.

FOLD AUTOSCRUB TO KEEP CLEAN UNTIL NEXT USE

