

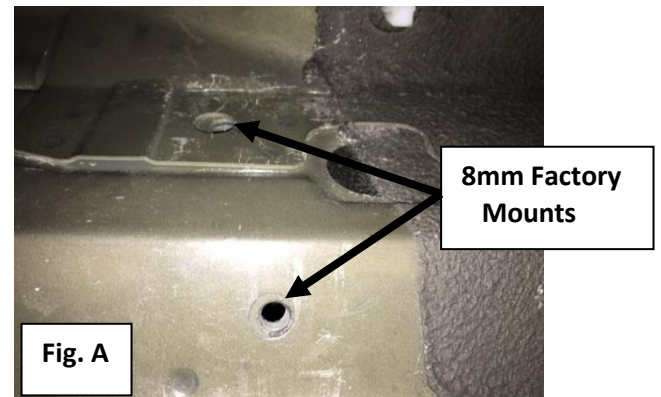
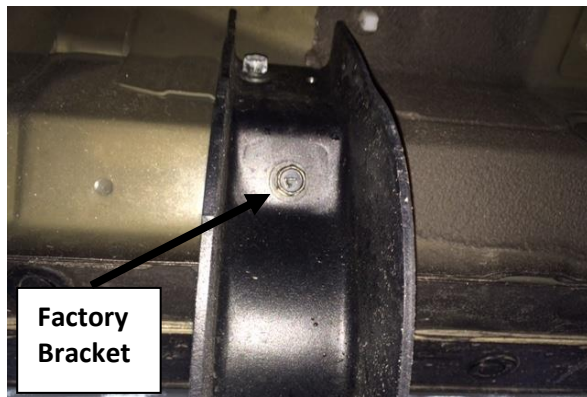
PART NUMBER: N16100CC,  
N16100CC-6, N1678CC,  
N164RKRC  
PRODUCT: STEPS

APPLICATION: 16-C Nissan Titan

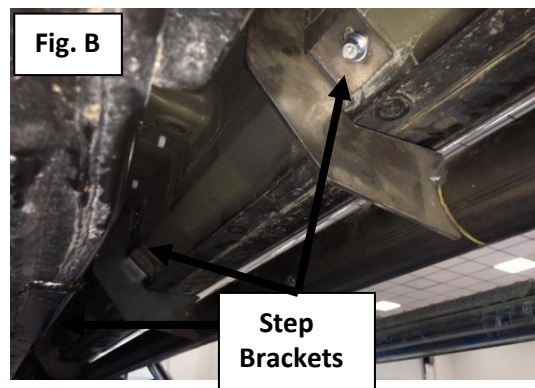
Parts Included:	Qty
Driver <a href="#">Side Step</a>	1
Passenger Side Step	1
<b>Hardware Pack</b>	<b>1</b>
M8 x 30mm Hex cap with inner grated washer	12

## INSTRUCTIONS:

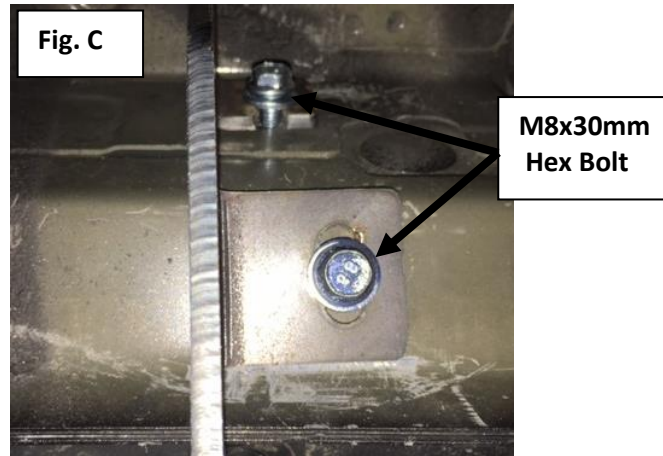
**Step 1:** Remove factory running bars if equipped and discard. You will see the 8mm threaded mounts in the body. (Fig.A)



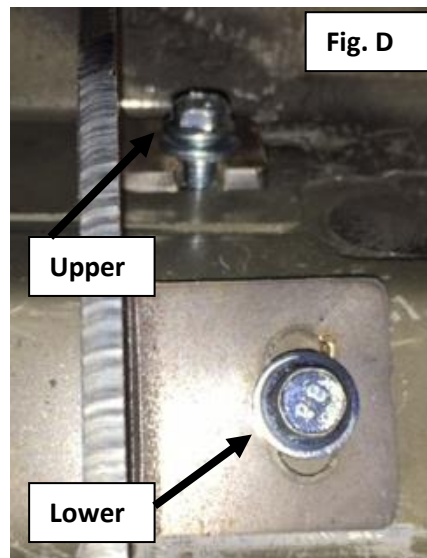
**Step 2:** Starting with the driver's side, lift step up into position aligning the step bracket with the 8mm OE mounts. (Fig. B)



**Step 3:** Install using the supplied M8x30mm Hex bolt and hand tighten at this time. **(Fig. C)**



**Step 4:** After final adjustment, tighten all hardware starting with the three lower bolts and then finish with the upper bolts. **(Fig. D)**



**Step 5:** Repeat steps 2-4 with the passenger side. **NOTE: Periodically check all hardware for tightness to insure longevity and safety of your steps.**