

PART NUMBER: **D15**

PRODUCT: [Nerf Steps](#)

APPLICATION: **15-16 Ram  
1500**

Parts Included:	Qty
Driver side step	1
Passenger side step	1
<b>Hardware Pack</b>	<b>1</b>
M8 x 35mm Hex head bolt	12
M8 Fender washer	12
M8 lock washer	12
3/8" speed clips	10
3/8" x 1" Hex bolt	10
3/8" Flat washer	2



## INSTRUCTIONS:

**Step 1:** Locate the driver's side Nerf Step. The driver side will have the shorter front bracket.

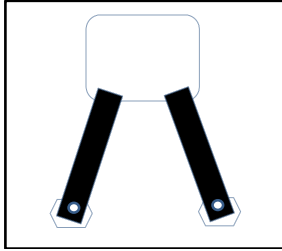
**Step 2:** Beginning with the driver's side; locate the six sets of 8mm threaded mounting holes. (3 on each side of the vehicle). These are positioned on the vertical sides of the floor pan beneath the doors, with one set of holes each in the front, middle, and rear of the vehicle cab.

**Step 3:** Next, align the Nerf-step brackets with the factory mounting positions and install the supplied M8x35mm hex bolts, nuts, flat washer and lock washer. Loosely fasten at this time.

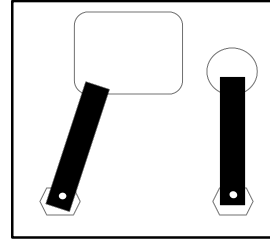
**Step 4:** Starting with the rear bracket, push upward on the step as far as it will go and fully tighten **one** of the M8 hex bolts. Next, move to the front bracket and push upwards on the step as far as it will go and fully tighten both M8 Hex bolts. Finish by fully tightening the center bracket and the second bolt on the rear bracket.

**Step 5:** *NOTE: Some models require additional clips and bolts. If your model has threaded mounts, skip step 6.*

**Step 6:** Using the 3/8" threaded clips, slide two clips in the upper rectangular hole, and align one clip in each hex hole so the clip threads are visible. **Figure 1**

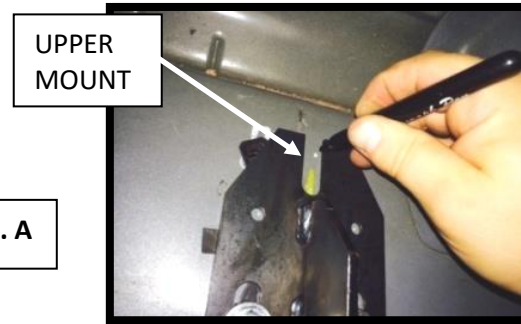
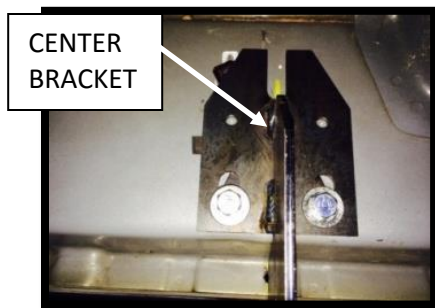


**Figure 1:** 09 - 14 RAM 1500, 2500, 3500, exc. 2014 1500 Quad Cab.



**Figure 2:** 2014 RAM 1500 Quad Cab, rear mounting locations.

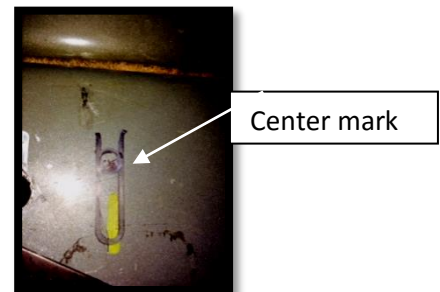
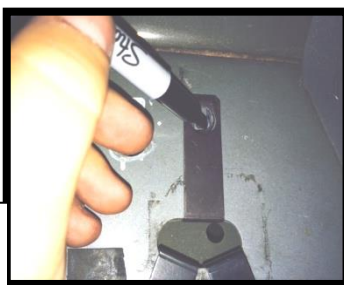
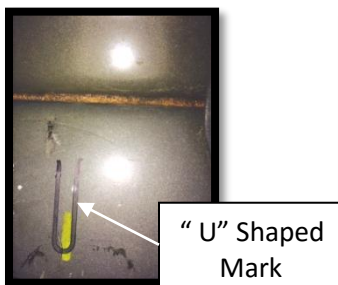
**Step 7:** Using a sharpie, outline the upper "U" shaped mount in the center bracket. **Fig. A**



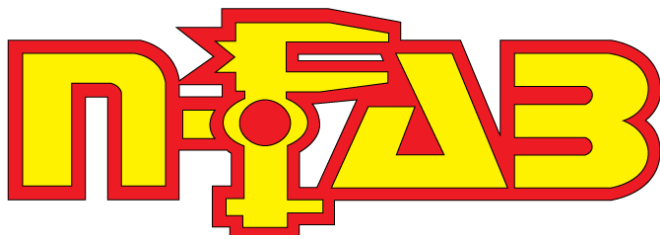
**Fig. A**

**Step 8:** Remove Nerf Step and set aside. Next, slide the 3/8 threaded clip from the upper rectangle hole and align with the "U" shaped mark from step 5. Make a mark through the threaded part of the clip. **Fig B**

**Fig. B**



**Step 9:** Remove clip. Use a 1/2" drill bit and drill out the center mark. Slide the 3/8 clip back into position so the threaded part is aligned with the hole.



PART NUMBER: **D15**

PRODUCT: **Nerf Steps**

APPLICATION: **15-16 Ram  
1500**

**Step 10:** Repeat Step 4 with the additional upper clip. Starting with the rear Bracket, raise the Nerf step into position and torque the bolts to 15-20 ft./lbs. Move to the front bracket and torque bolts. Then to the center brackets and torque down bolts. ( **NOTE:** There are two additional mounting points in each bracket for a 5/16 self tapper or rivet for upper impacts situations. Self tapper and rivets not included.)

**Step 11:** Repeat Steps 1-7 for passenger side.

**Step 12:** Repeat steps 2-4 for Passenger side. Your install is now complete.