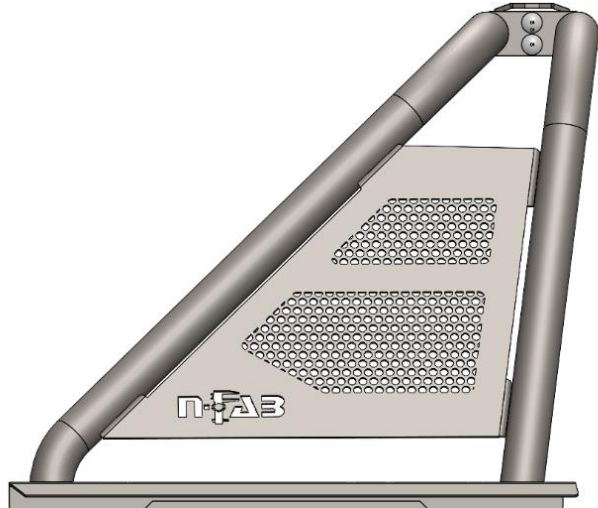




I-SHEET PART NUMBER: INST-00272
 PART NUMBER: **T16BR-TX**
 PRODUCT: **SPORT BAR**
 APPLICATION: **16-21 TACOMA**

HARDWARE: HWKT-11806X		
	3/8"X1" CARRIAGE BOLT	4
	3/8" FLANGED NUT	4
	M8-1.25 X 25MM CLASS 8.8 HEX SERRATED FLANGE	4
	M8 CHANNEL NUT	4

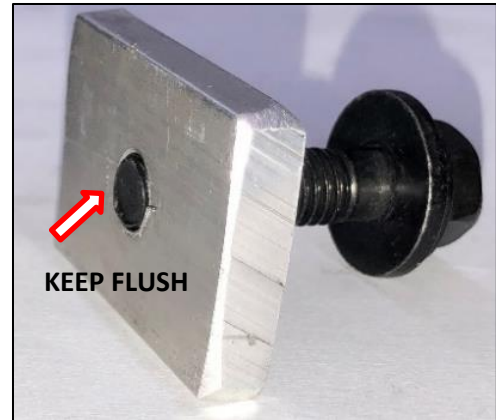
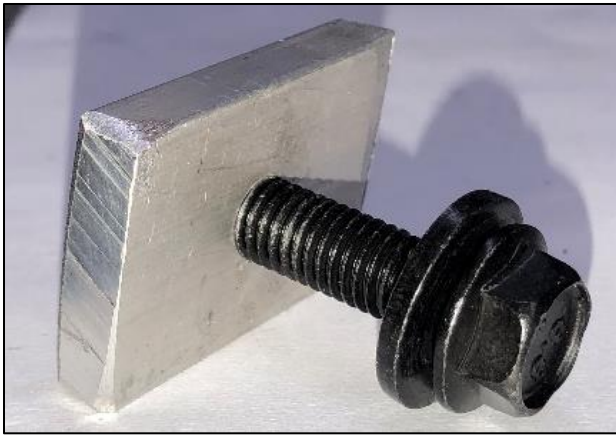
PARTS INCLUDED	QTY
CENTER LIGHT MOUNT ASSEMBLY	1
DRIVER SIDE ASSEMBLY	1
PASSENGER SIDE ASSEMBLY	1



Step 1. Begin by removing the end caps from each end of the bed rail near the tailgate and set aside. *NOTE: The end caps will be re-installed later in the install.*



Step 2. Assemble the supplied M8 bolts and threaded channel nuts (x4).
NOTE: Do not show exposed threads past nut.



Step 3. Install one bolt and nut assembly in each bed rail by sliding through the channel opening until it makes contact with the end cap on the opposite end.



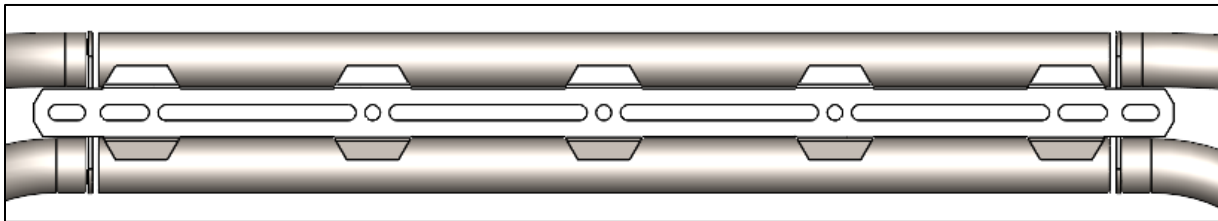
Step 4. Next, slide the two remaining bolt and nut assemblies half way through the channel.





I-SHEET PART NUMBER: INST-00272
PART NUMBER: T16BR-TX
PRODUCT: SPORT BAR
APPLICATION: 16-21 TACOMA

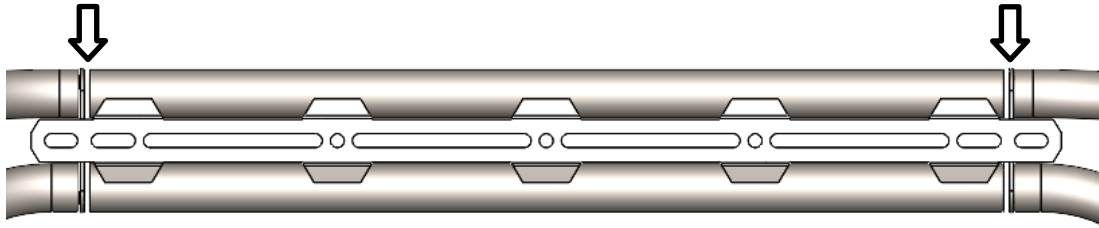
Step 5. Attach the Center section to the driver and passenger side assemblies using the supplied 3/8" x 1" carriage bolt (x4) and 3/8" fanged nut (x4) and leave finger tight for now. ***NOTE: Begin with the upper bolt and nut first to have easier access to the lower fasteners.***



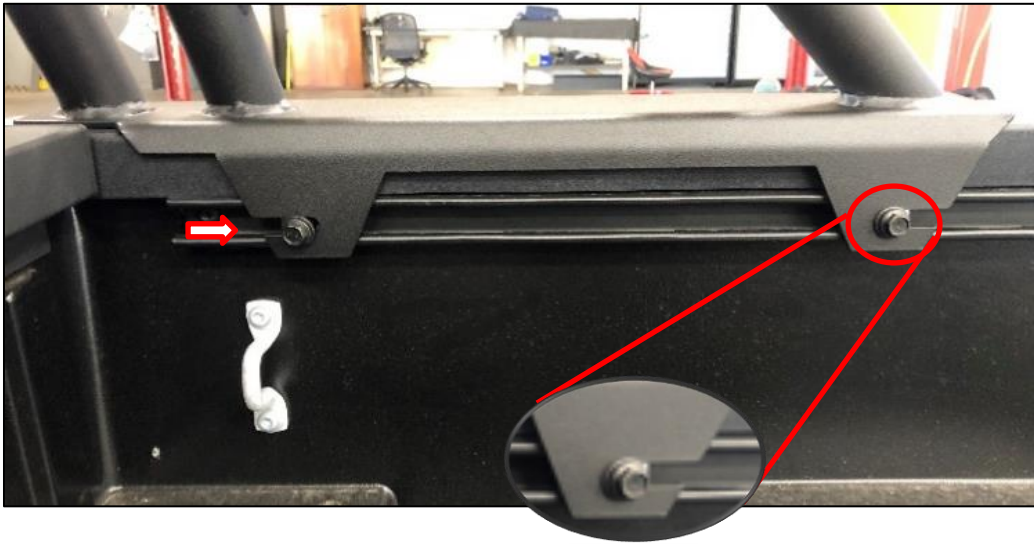
Step 6. With an associate on each side, carefully walk the Style Bar back towards the cab. Begin lowering down evenly on both sides to avoid contact with bed rail. Place into position, aligning the Style Bar with the bulk head.



Step 7: Next, fully tighten the carriage bolts in the center section.

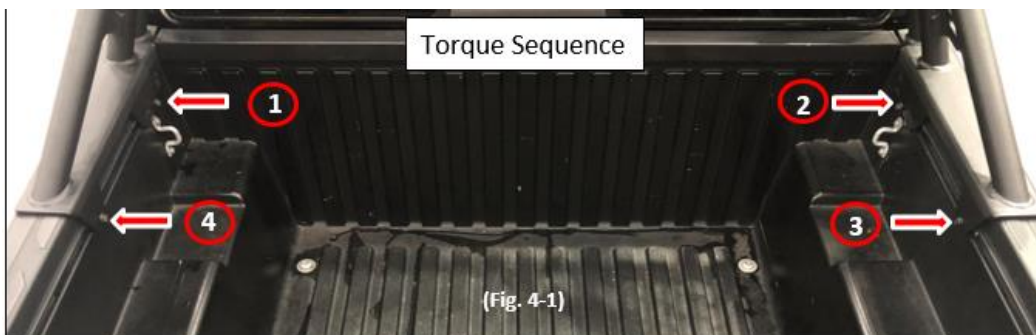


Step 8. Slide the four bolt and nut assemblies through the open slots in the Style Bar until contact made and hand tighten.



Step 9. Tighten all four mounting positions to **16 ft/lbs (+/- 2lbs)**.

***** Follow torque sequence in (Fig. 4-1) *****



Step 10. Finish by re-installing bed rail end caps removed in Step 1.

**** Periodical check all fasteners for tightness. ****