



PART NUMBER: T1634CMB  
PRODUCT: LBM BUMPER BRKT  
APPLICATION: 16-17 TOYOTA  
TACOMA

Parts Included:	Qty
LED Light Bracket	1
Frame Brackets	2
<b>Hardware</b>	
3/8" x 1 1/4" Hex Head bolt	4
3/8" Flat washer	8
3/8" Nuts	4
1/4" x 1" self tap screws	4



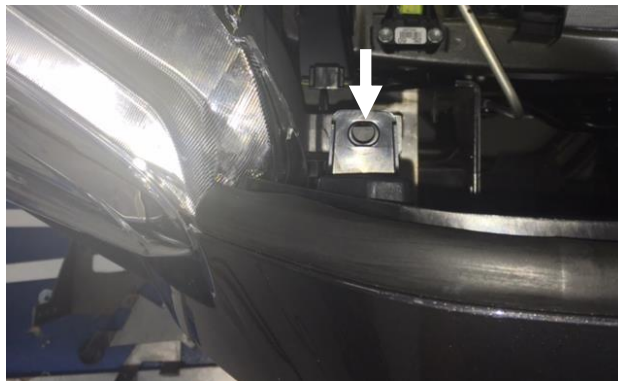
(Shown with a 30" double row LED)

### **Grill and Insert removal :**

**Step 1:** Open hood and locate the 2 screws that attach grill to core support and remove.



**Step 2:** Next remove the two push pins located on the left and right side of grill.



**Step 3:** Carefully left the two support brackets enough to clear the mounts.

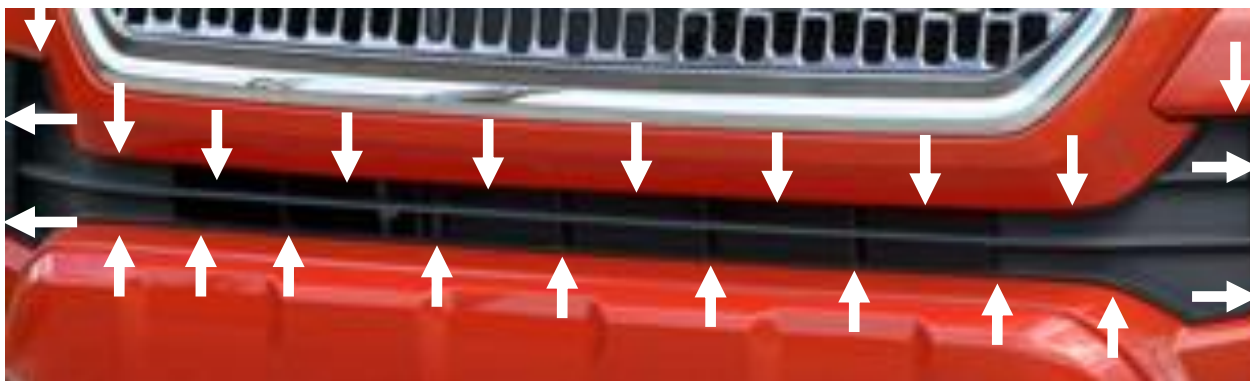
**Step 4:** With both hands, pull straight out to release the pins and remove the grill.



**Step 5:** Remove the plastic fog light trim piece by pulling forward to release the six pins (both sides)



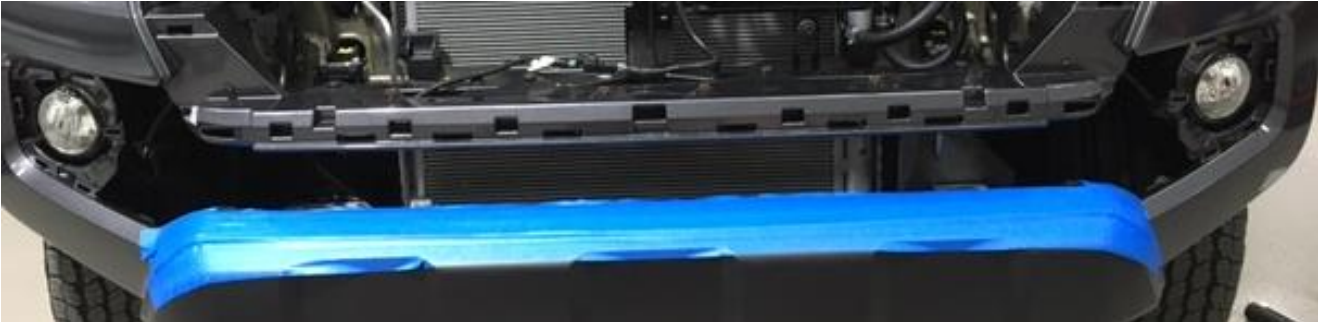
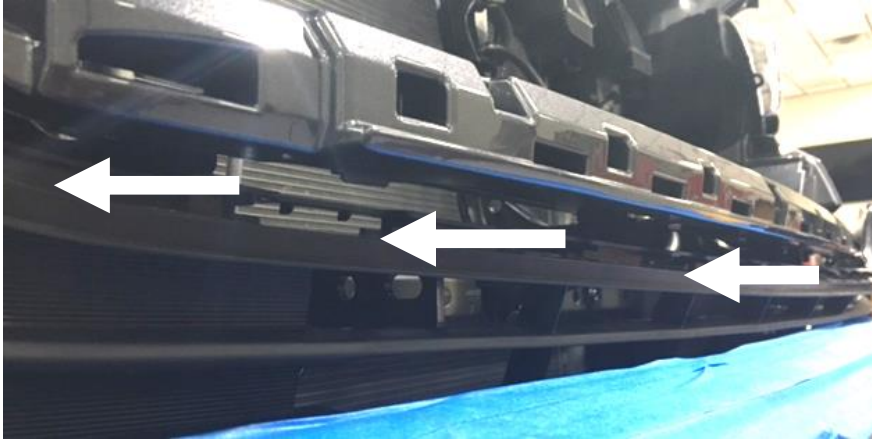
**Step 6:** Using a panel tool or flat head screw driver, release the 23 pins holding the plastic insert to the bumper.



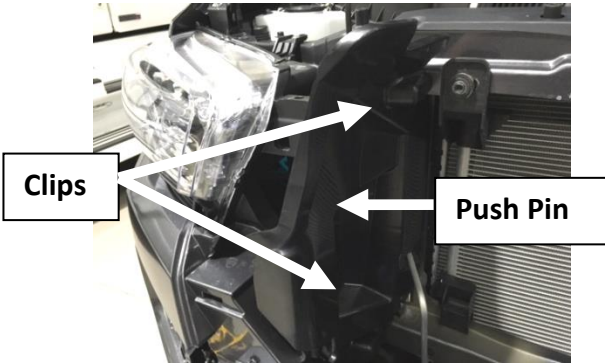


PART NUMBER: T1634CMB  
PRODUCT: LBM BUMPER BRKT  
APPLICATION: 16-17 TOYOTA TACOMA

**Step 7:** Carefully push trim backwards through the core support to release from bumper and carefully pull out of the opening



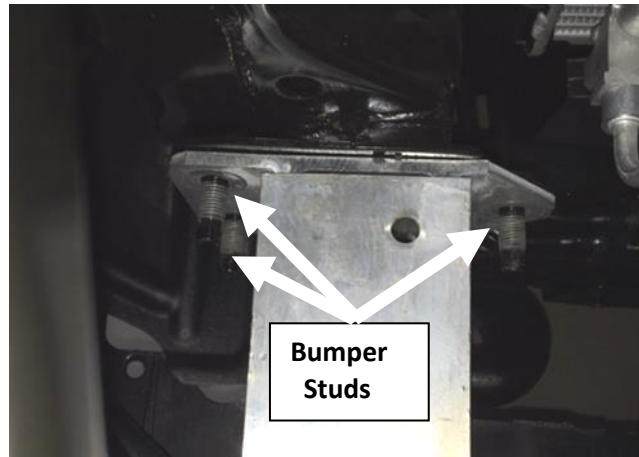
**Step 8:** Remove the plastic side cover by releasing the push pin and pulling forward from the clip. (Both sides)



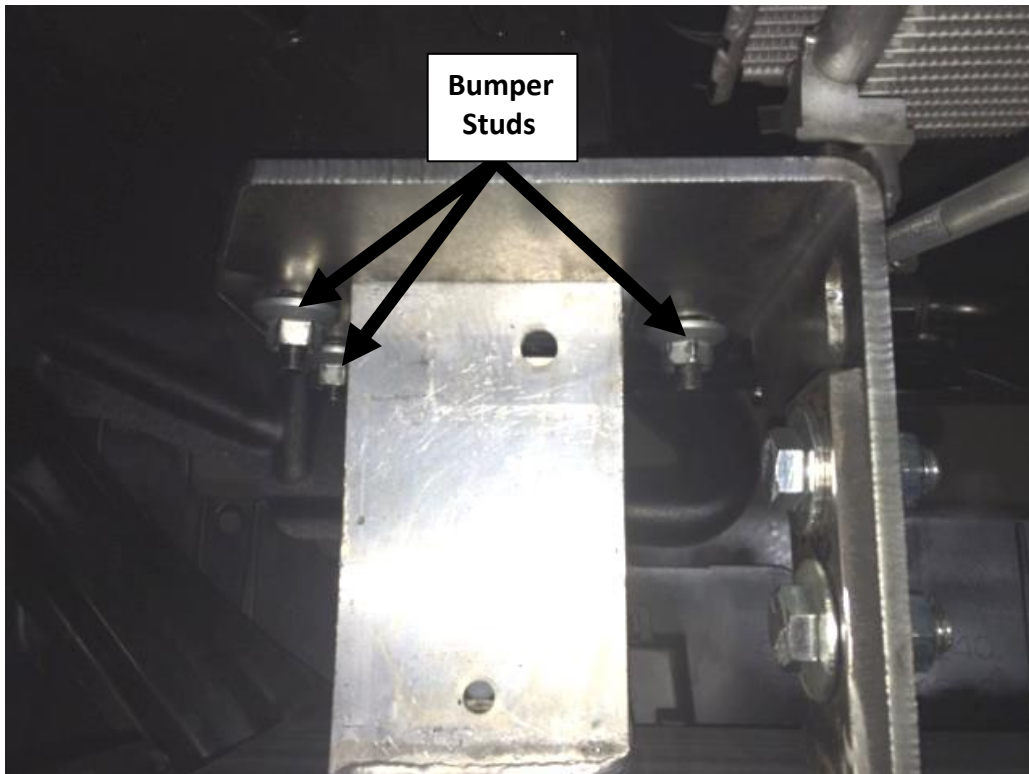


## **Bumper Bracket/light Bracket Install:**

**Step 1:** Remove the three 14mm nuts from the OE bumper studs. (Both sides)



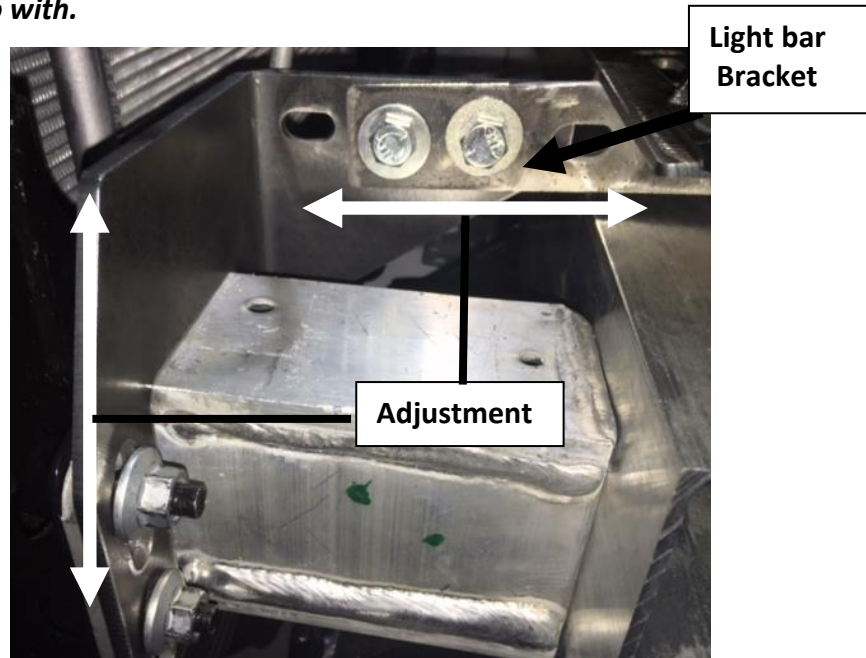
**Step 2:** Install the bumper bracket to the OE studs with the factory 14mm nuts and leave loose. (Both sides)





PART NUMBER: T1634CMB  
PRODUCT: LBM BUMPER BRKT  
APPLICATION: 16-17 TOYOTA  
TACOMA

**Step 3:** Install the LED bracket by sliding through the bumper opening and mating up with the frame bracket. Using the supplied 3/8" x 1 1/4" Hex bolt, nuts and washers fasten and leave loose. **NOTE: There will be 2 adjustment setting with the bracket mounts depending on what LED light manufacture you go with.**



**Step 4:** Next, carefully slide LED light through the opening and rest on top of the bracket mount. **NOTE: Mounting the side brackets to the LED light before this step may be easier.**



**Step 5:** Slide the Light and Bracket back toward the vehicle as far as possible to create room to re-install the OE bumper insert.

**Step 6:** Carefully slide one end of the bumper insert through the opening and navigate until the other end is inside the bumper. Align up the tabs and pull forward to snap into place.

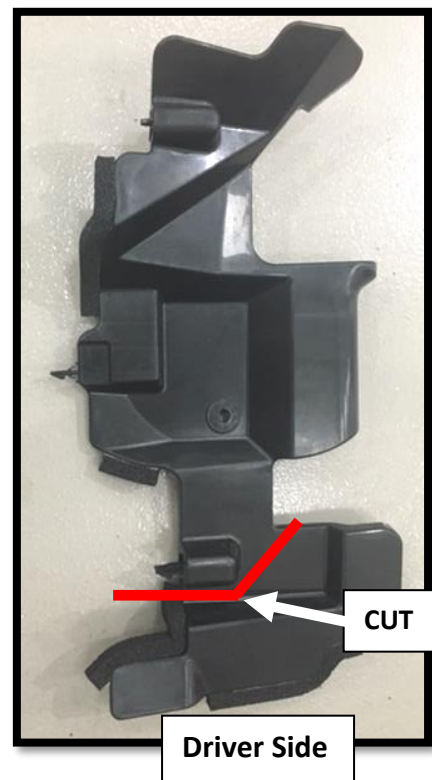
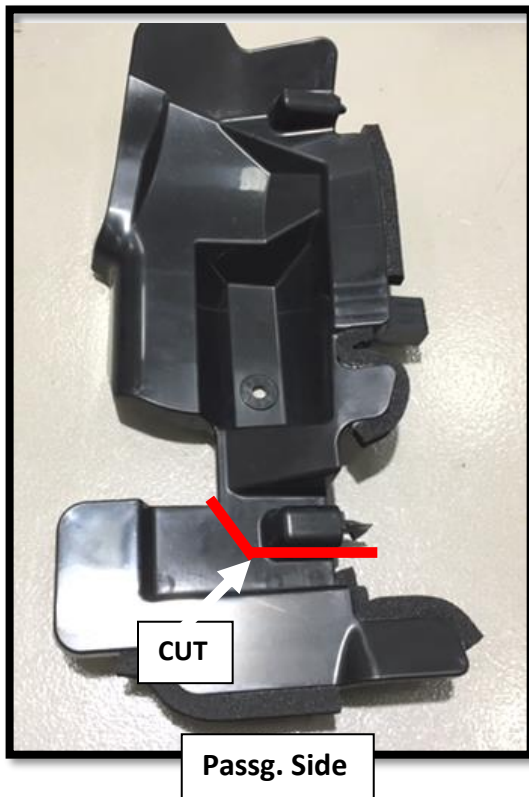
Next, re-install the fog light trim pieces by aligning pins and snap into place. (Both sides)



**Step 7:** Once the bumper brackets, LED light bracket and LED are properly aligned, tighten all hardware.

**Step 8:** Wire light/lights to manufactures specs.

**Step 9:** Trim the Passenger and Driver side core support panels to clear the brackets.





PART NUMBER: T1634CMB  
PRODUCT: LBM BUMPER BRKT  
APPLICATION: 16-17 TOYOTA  
TACOMA

**Step 10:** Re-install core support panels and secure. (Both sides)



**Step 11:** Re-install the OE grill and secure.



(Shown with a single row 30" LED)

