



PART NUMBER: T164LB, T1630LD
T1630OR, T162LH
PRODUCT: LIGHT BAR /PRE-RUNNER
APPLICATION: 2016-C TOYOTA
TACOMA

Parts Included:	Qty
1 Light bar	1
Support brackets	2
Bumper brackets	2
Hardware Pack	1
3/8" x 1 1/4" Hex Head bolt	4
3/8" Flat washer	8
3/8" Nuts	4
1/4" x 1" self tap screws	4



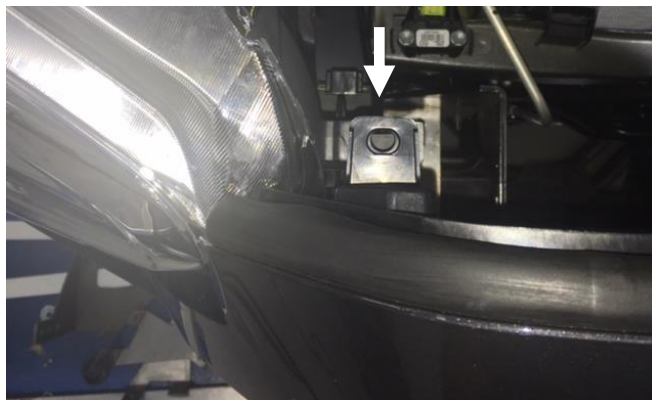
INSTRUCTIONS:

Grill and Insert removal :

Step 1: Open hood and locate the 2 screws that attach grill to core support and remove.



Step 2: Next remove the two push pins located on the left and right side of grill.



Step 3: Carefully left the two support brackets enough to clear the mounts.

Step 4: With both hands, pull straight out to release the pins and remove the grill.



Step 5: Remove the plastic fog light trim piece by pulling forward to release the six pins (both sides)



Step 6: Using a panel tool or flat head screw driver, release the 23 pins holding the plastic insert to the bumper.



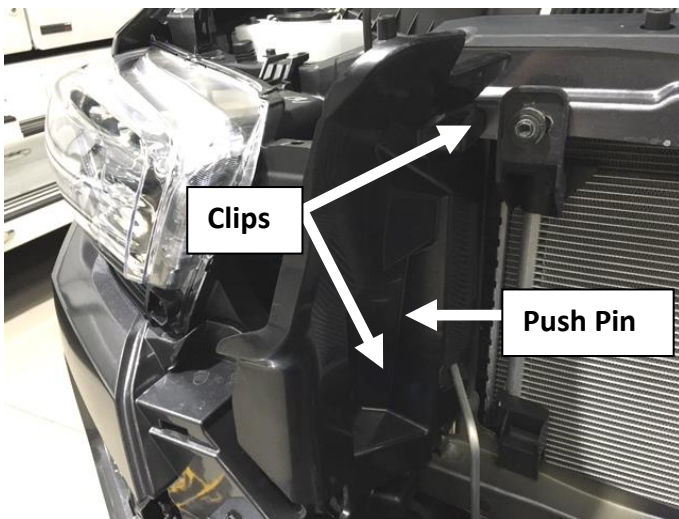


PART NUMBER: T164LB, T1630LD
T1630OR, T162LH
PRODUCT: LIGHT BAR /PRE-RUNNER
APPLICATION: 2016-C TOYOTA
TACOMA

Step 7: Carefully push trim backwards through the core support to release from bumper and carefully pull out of the opening.

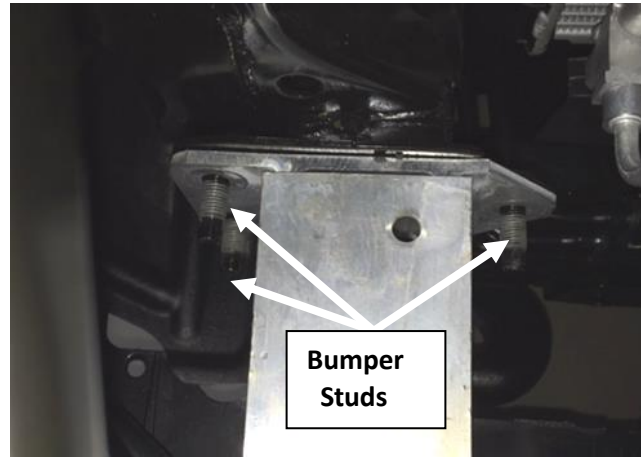


Step 8: Remove the plastic side cover by releasing the push pin and pulling forward from the clip. (both sides)



Bumper Bracket Install:

Step 1: Remove the three 12mm nuts from the OE bumper studs. (both sides)



Step 2: Install the bumper bracket to the OE studs with the factory 12mm nuts and fully tighten to factory specs. (both sides)





PART NUMBER: T164LB, T1630LD
T1630OR, T162LH
PRODUCT: LIGHT BAR /PRE-RUNNER
APPLICATION: 2016-C TOYOTA
TACOMA

Step 3: Trim the ribs in the insert to clear the light bar brackets.

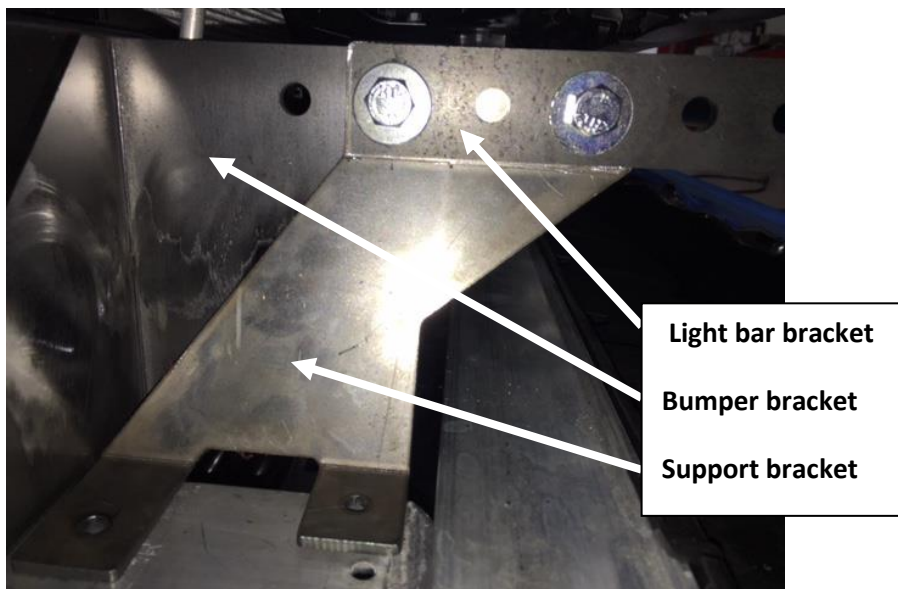


STEP 4: Re-install OE fog light bezels and bumper insert and secure.

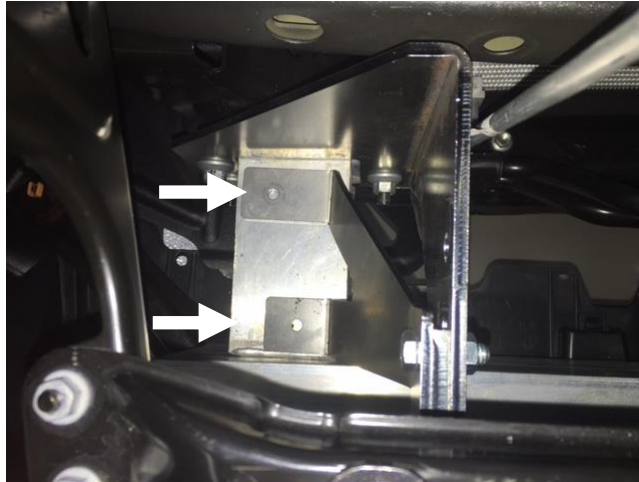
Light bar Install:

Step 1: Rest Support bracket on top of crash bar and align with hole slots. (Both sides)

Step 2: Slide light bar through bumper opening and line up with bumper and support bracts. Attach with the supplied 3/8"x1 1/4" Hex bolts nuts and washers and loosely tighten.



Step 3: Using the supplied ¼"x1" self tapping screws, secure Support bracket to the crash bar brace. (Both sides)

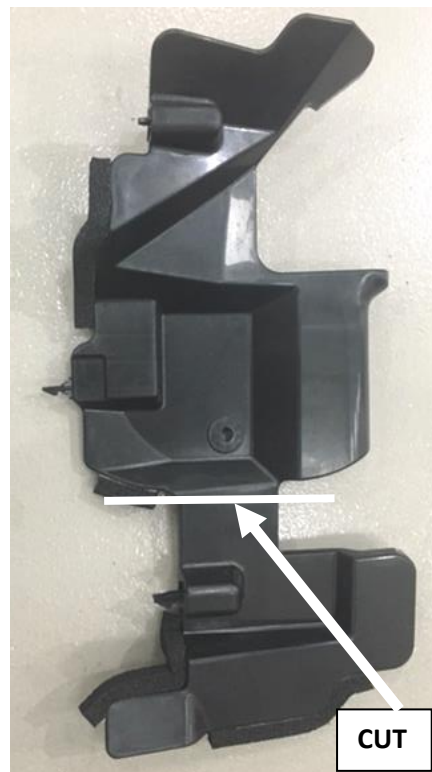


Step 4: After light bar is properly adjusted, tighten all hardware.

Step 5: Next, trim the driver and passenger side core support covers to clear the bumper brackets.



Passg. Side



Driver Side



PART NUMBER: T164LB, T1630LD
T1630OR, T162LH
PRODUCT: LIGHT BAR /PRE-RUNNER
APPLICATION: 2016-C TOYOTA
TACOMA

Step 6: Re-install passenger and driver side core support covers.



Step 7: Re- Install OE grill and secure.

